

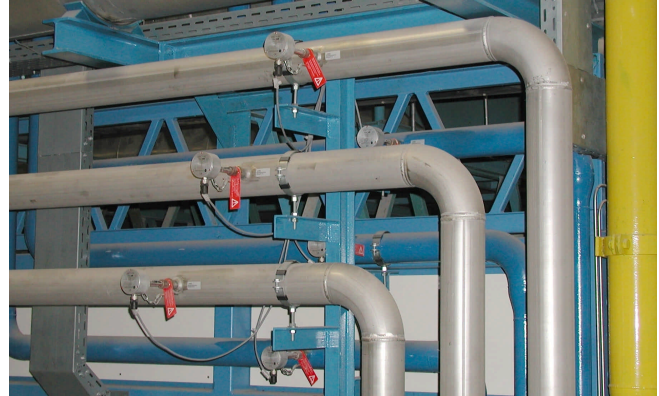
Application Report Flow Sensors

Ceramic Kiln

Application:

In high precision kilns for technical ceramics the customers require a very precise regulation of the temperature profile over a very high power range. To reach this goal, this SCHMIDT customer has selected the SCHMIDT Flow Sensor SS 20.60 to measure the mass flow of the combustion air. This allowed him to regulate the air / fuel ratio very precise over a control range never reached before.

Additionally he has also placed the SCHMIDT sensor in the ducts for the inert gases, who prevent the expensive content of the oven chamber to oxidise.



The air intake is equipped with a battery of SS 20.60 sensors.



The nitrogen is also measured by SS 20.60 sensors.

Function of the Sensor:

Mass flow measurement of combustion air and inert gas

Sensor type used:

SCHMIDT[®] SS 20.60
0..20 m/s, 4..20 mA

Location of the Sensor:

Air intake ducts of burners and supply ducts of inert gas (diameters 2 inch to 30 inch / DN 50 to DN 800)

Reason to choose a SCHMIDT Sensor:

- High turn-down ratio 1:300
- Simple and low-cost mounting
- No pressure loss
- One sensor for different pipes

Branch:

Plant construction / Kilns