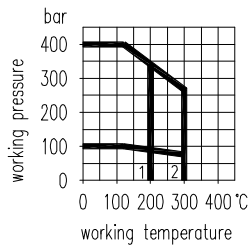
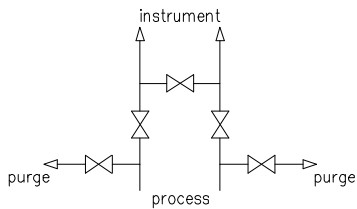
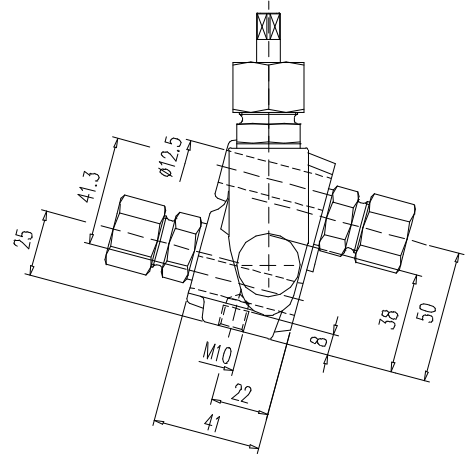
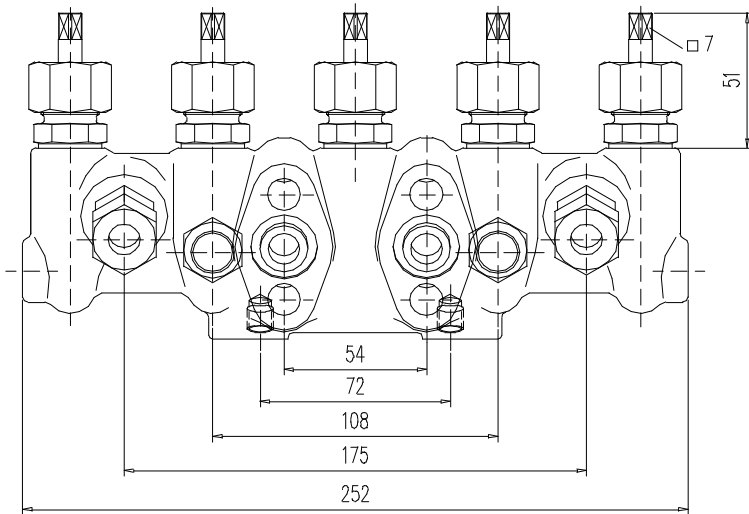
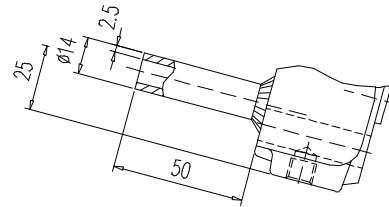


5 valve manifold PN 100 / PN 400 DN 5
for direct mounting according to DIN 19 213



1 PTFE packing
 2 graphite packing



MOUNTING ACCESSORIES see section 8

PN	Material	Connections		Part no.
		Inlet / Blow-off	Outlet ³⁾	
100	steel st. st.	tube fitting O. D. 12 mm, line L, G 3/8	DIN 19 213 Type B1	S341.38.110 S341.38.210
400	steel st. st.	tube fitting O. D. 12 mm, line S, G 3/8	DIN 19 213 Type B3	S541.38.125 S541.38.225
400	steel st. st.	weld ends for tube O. D. 14 x 2,5 mm		S541.38.135 S541.38.235

Components	Steel	Stainless steel ¹⁾
	DIN - Material Number	
Body ²⁾	1.0460	1.4571
Bonnet	1.0501	1.4571
Valve seat	1.4571	
Valve stem	1.4104	1.4571
Needle tip	1.4122 ⁴⁾	1.4571
Packing	PTFE up to 200°C (graphite up to 300°C)	
Union nut	steel	1.4571

- **Body:** die-pressed part
- **Surface:** steel phosphatized
- Internal stem thread
- Replaceable valve seat
- Stem with cold rolled surface, back seat and non-rotating needle tip
- Special types are available
- **Accessories:** 1 socket wrench

- 1) Can also be supplied for oxygen service. Please notice order instruction B 3!
- 2) Available with inspection certificate 3.1.B acc. to EN 10 204
- 3) Dimensions acc. to DIN 19 213 see order instruction B 4
- 4) 1.4122 quenched and tempered