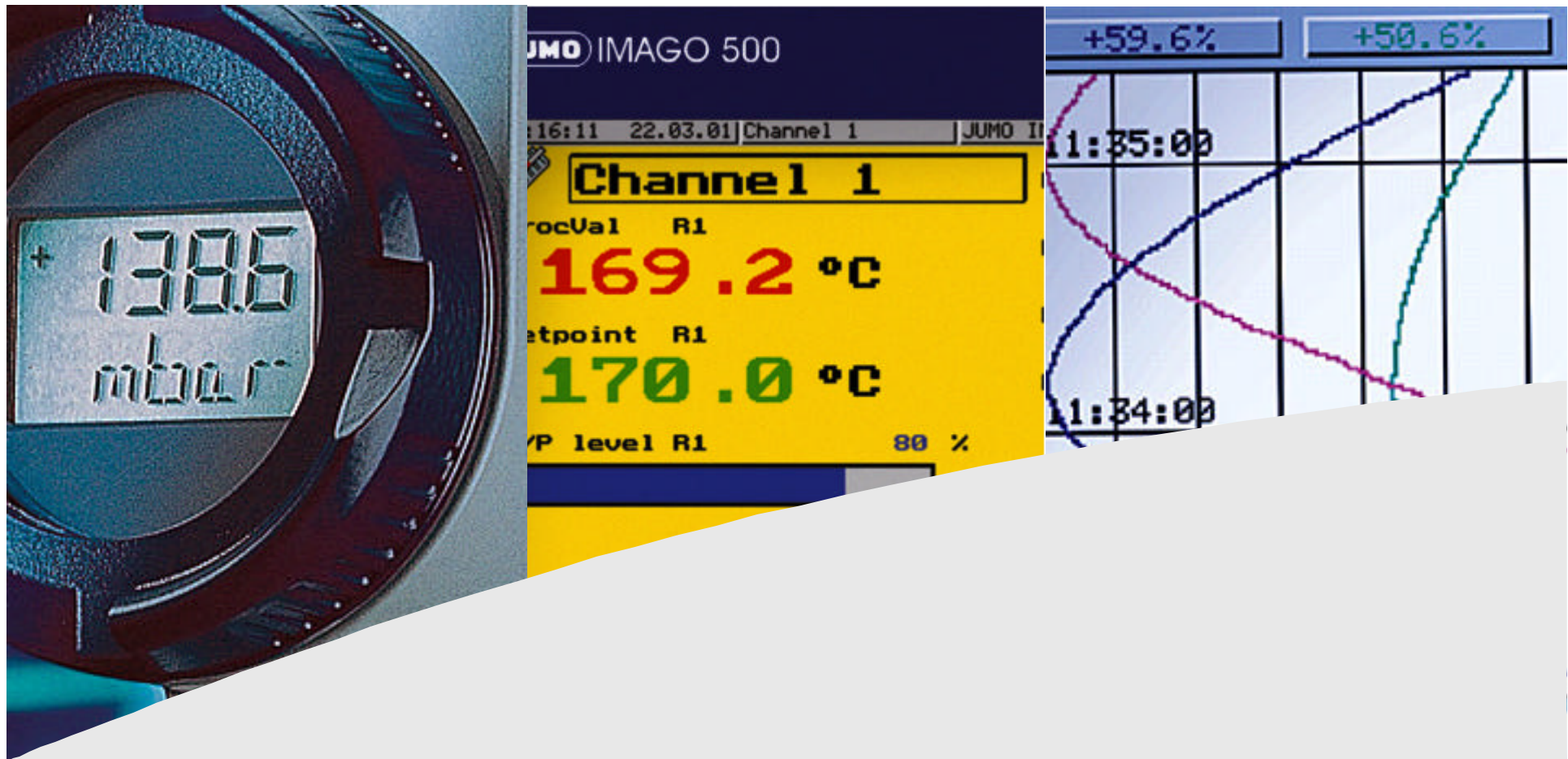


Herzlich Willkommen
Bienvenue
Welcome





Measurement, Control, Recording: Technological excellence for the global market



JUMO is German company,
Headquarter in Fulda,
with development, manufacturing, sales





„JUMO today“
Key company data





„JUMO today“ Key company data



Judicial form: GmbH & Co. KG

Registered offices: Fulda

Employees: 1200 in Germany, 500 abroad

Turnover 2007: € 169 million, consolidated

Total company area: approx. 70.000 m²

Production area: approx. 54.000 m²



In the third generation: The general management



„We are proud that, in spite of all the years of stormy development, we have always remained a family company.

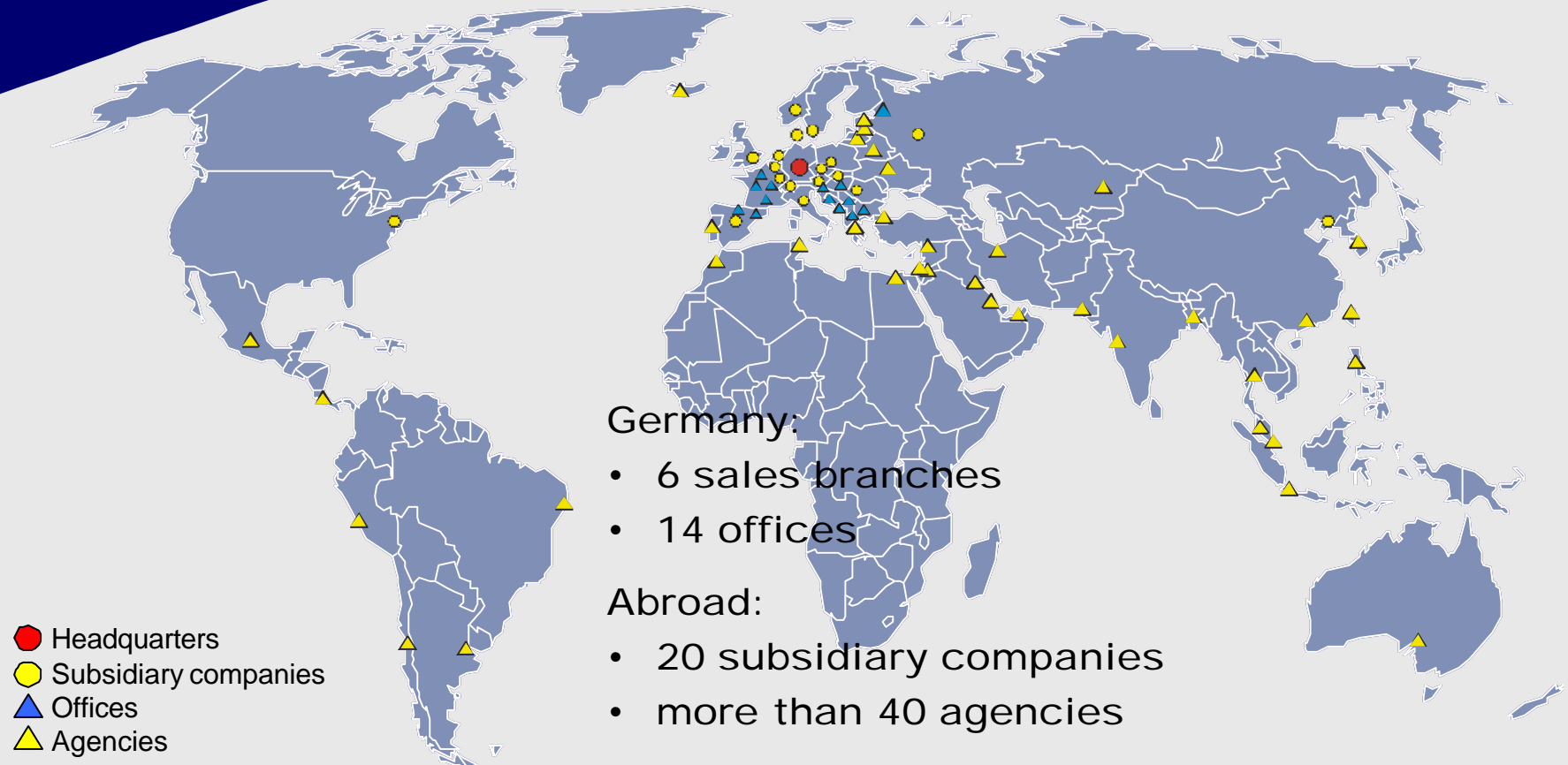
This guarantees continuity.“

In 1985, the founder, Moritz Kurt Juchheim, was succeeded by Bernhard Juchheim. And in 2003 his son, Michael Juchheim, took over for the third generation of managerial responsibility.

We are prepared for the future.

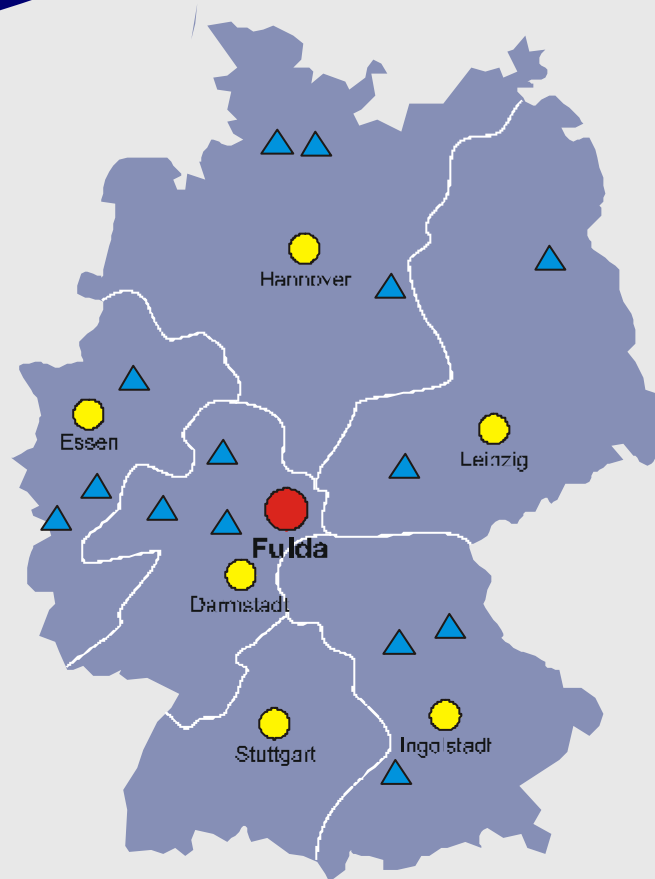


Our locations: around the world



Our locations: throughout Germany

- Headquarters
- Sales branches
- ▲ Offices



- Fulda headquarters
- Sales branches
 - Darmstadt
 - Essen
 - Hanover
 - Ingolstadt
 - Leipzig
 - Stuttgart



Optimum solutions for everyday use: High-profile products

Controllers, Power Units,
System / Recording Technology



- Process control and programmers
- Automation software
- Electronic thermostats / microstats
- Temperature monitors / limiters
- Digital indicators
- Compact and process controllers

- Recording instruments
- Temperature transmitters
- Power supplies, Isolating amplifiers, Supply isolators, Safety barriers
- Thyristor power switches / power units
- Software and accessories

Transducers
for temperature
and humidity



- Temperature sensors
- Thermocouples
- Resistance thermometers
- Ex temperature probes (ATEX)
- Humidity measuring instruments
- DKD (German Calibration Service) laboratory
- Nationally accredited Testing Station for Heat

Optimum solutions for everyday use: High-profile products

Pressure Instruments



- Pressure transmitters
- Level probes
- Pressure gauges and pressure switches
- Pressure cells
- Chemical seals and accessories

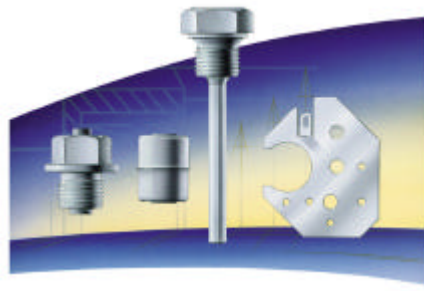
Thermostats and Dial Thermometers



- Panel and surface mounting thermostats in TR, TW, TB, STW and STB versions
- Room thermostats
- Ex thermostats
- Electronic thermostats
- Warm-air thermostats
- Dial thermometers as indicating and control instruments
- Bimetallic temperature switches
- Electronic temperature indicators with transmitter
- Timers

Optimum solutions for everyday use: High-profile products

Metalworking



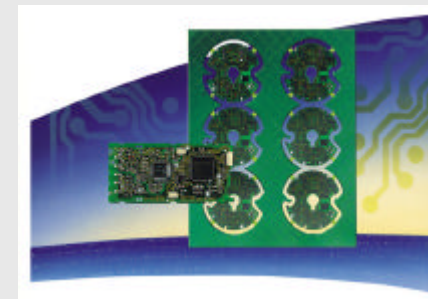
- Turning
- Laser cutting
- Forming
- Surface treatment
- Assemblies
- Tooling
- Floats

Analytical Measurement



- pH and redox: sensors and transmitters / controllers
- Conductivity instrumentation: conductive and inductive
- Dissolved oxygen measurement
- Chlorine, chlorine dioxide, ozone, hydrogen peroxide and peracetic acid instrumentation
- Fittings and accessories

Circuit Boards PCB Assemblies



- CAD layouting
- Single-sided and double-sided PCBs
- Multilayer
- SMD mounting
- In-circuit test
- Functional testing
- Run-in
- Final assembly
- Final instrument test



Thank you very much
for your attention !

