

ST 3000 Smart Transmitter Series 900 Gauge Pressure Models

STG944	0 to 500 psi	0 to 35 bar
STG94L	0 to 500 psi	0 to 35 bar
STG974	0 to 3000 psi	0 to 210 bar
STG97L	0 to 3000 psi	0 to 210 bar
STG98L	0 to 6000 psi	0 to 415 bar
STG99L	0 to 10000 psi	0 to 690 bar

Specification and Model Selection Guide

Introduction

In 1983, Honeywell introduced the first Smart Pressure Transmitter—the ST 3000®. In 1989, Honeywell launched the first all digital, bi-directional protocol for smart field devices. Today, its ST 3000 Series 900 In-line, Gauge Pressure Transmitters continue to bring proven “smart” technology to a wide spectrum of pressure measurement applications. Typical applications include high-pressure measurement in boilers, fuel feeds, and high-pressure reaction vessels in the petrochemical and hydrocarbon recovery industries – any location where accuracy and reliability are crucial to safe, economical operation. As with the rest of the line of Honeywell transmitters, the in-line transmitters offer the ability to be installed in a wide variety of hazardous environments for accurate repeatable pressure measurement.

All ST 3000 transmitters can provide a 4-20 mA output, Honeywell Digitally Enhanced (DE) output, HART® output, or FOUNDATION™ Fieldbus output. When digitally integrated with Honeywell’s Process Knowledge System™, EXPERION PKS™, ST 3000 instruments provide a more accurate process variable as well as advanced diagnostics.

Honeywell’s cost-effective ST 3000 S900 transmitters lead the industry in reliability and stability:

- Stability = +/-0.01% per year
- Reliability = 470 years MTBF



Figure 1—Series 900 Gauge Pressure Transmitters feature proven piezoresistive sensor technology.

The devices provide comprehensive self-diagnostics to help users maintain high uptime, meet regulatory requirements, and attain high quality standards. S900 transmitters allow smart performance at analog prices. Accurate, reliable and stable, Series 900 transmitters offer greater turndown ratio than conventional transmitters.

"Honeywell transmitters operating in the digital mode using Honeywell’s Digitally Enhanced (DE) protocol make diagnostics available right at the control system’s human interface. Equally important, transmitter status information is continuously displayed to alert the operator immediately of a fault condition. Because the process variable (PV) status transmission precedes the PV value, we are guaranteed that a bad PV is not used in a control algorithm. In addition, bi-directional communication provides for remote transmitter configuration directly from the human interface, enabling management of the complete loop."

Maureen Atchison, DuPont
Site Electrical & Instrumentation Leader

Description

The ST 3000 transmitter can replace any 4 to 20 mA output transmitter in use today and operates over a standard two-wire system.

The measuring means is a piezoresistive sensor, which actually contains three sensors in one. It contains a differential pressure sensor, a temperature sensor, and a static pressure sensor.

Microprocessor-based electronics provide higher span-turndown ratio, improved temperature and pressure compensation, and improved accuracy.

The transmitter's meter body and electronics housing resist shock, vibration, corrosion, and moisture. The electronics housing contains a compartment for the single-board electronics, which is isolated from an integral junction box. The single-board electronics is replaceable and interchangeable with any other ST 3000 Series 100 or Series 900 model transmitter.

Like other Honeywell transmitters, the ST 3000 features two-way communication between the operator and the transmitter through our Smart Field Configurator (SFC). You can connect the SFC anywhere that you can access the transmitter signal lines.

The SCT 3000 Smartline[®] Configuration Toolkit provides an easy way to configure instruments using a personal computer. The toolkit enables configuration of devices before shipping or installation. The SCT 3000 can operate in the offline mode to configure an unlimited number of devices. The database can then be loaded downline during commissioning.

Features

- Choice of linear or square root output conformity is a simple configuration selection.
- Direct digital integration with Experion PKS and other control systems provides local measurement accuracy to the system level without adding typical A/D and D/A converter inaccuracies.
- Unique piezoresistive sensor automatically compensates input for temperature and static pressure. Added "smart" features include configuring lower and upper range values, simulating accurate analog output, and selecting preprogrammed engineering units for display.
- Smart transmitter capabilities with local or remote interfacing means significant manpower efficiency improvements in commissioning, start-up, and ongoing maintenance functions.

Specifications

Operating Conditions – All Models

Parameter	Reference Condition (at zero static)		Rated Condition		Operative Limits		Transportation and Storage	
	°C	°F	°C	°F	°C	°F	°C	°F
Ambient Temperature	25 ±1	77 ±2	-40 to 70	-40 to 158	-40 to 85	-40 to 185	-55 to 125	-67 to 257
Meter Body Temperature	25 ±1	77 ±2	-40 to 110*	-40 to 230*	-40 to 125**	-40 to 257**	-55 to 125	-67 to 257
Humidity %RH	10 to 55		0 to 100		0 to 100		0 to 100	
Vacuum Region - Minimum Pressure								
mmHg absolute	atmospheric		25		2 (short term ***)			
inH ₂ O absolute	atmospheric		13		1 (short term ***)			
Supply Voltage, Current, and Load Resistance	Voltage Range: 10.8 to 42.4 Vdc at terminals Current Range: 3.0 to 21.8 mA Load Resistance: 0 to 1440 ohms (as shown in Figure 2)							
Maximum Allowable Working Pressure (MAWP) (ST 3000 products are rated to Maximum Allowable Working Pressure)	STG944 and STG94L = 500 psi, 35 bar STG974 and STG97L = 3000 psi, 210 bar STG98L = 6000 psi, 415 bar STG99L = 10,000 psi, 690 bar Units can withstand overpressure of 1.5X MAWP without damage.							

* For model 944 with CTFE fill fluid, the rating is -15 to 70°C (5 to 158°F); for model 98L with CTFE fill fluid, the rating is -15 to 110°C (5 to 230°F).

** For Models STG94L, STG97L, and STG98L, STG99L the upper limit is 110°C (230°F).

*** Short term equals 2 hours at 70°C (158 °F)

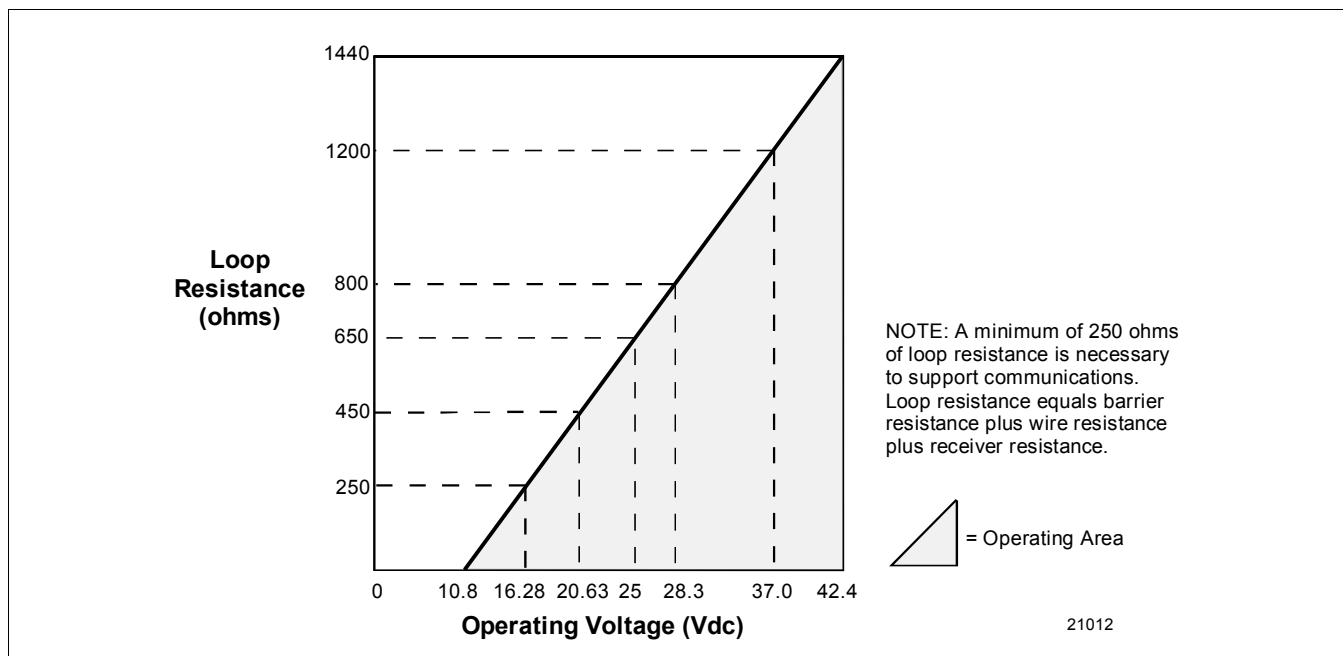


Figure 2—Supply voltage and loop resistance chart.

Performance Under Rated Conditions* - Models STG944 & 94L (0 to 500 psi/35 bar)

Parameter	Description
Upper Range Limit psi bar	500 35
Minimum Span psi bar	20 1.4
Turndown Ratio	25 to 1
Zero Elevation and Suppression	No limit except minimum span from absolute 0 (zero) to +100% URL. Specifications valid over this range.
<p>Accuracy (Reference – Includes combined effects of linearity, hysteresis, and repeatability)</p> <ul style="list-style-type: none"> • Accuracy includes residual error after averaging successive readings. • For FOUNDATION Fieldbus use Digital Mode specifications. For HART use Analog Mode specifications. 	<p>In Analog Mode: ±0.075% of calibrated span or upper range value (URV), whichever is greater, terminal based.</p> <p>For URV below reference point (20 psi), accuracy equals:</p> $\pm \left[0.025 + 0.05 \left(\frac{20 \text{ psi}}{\text{span psi}} \right) \right] \text{ or } \pm \left[0.025 + 0.05 \left(\frac{1.4 \text{ bar}}{\text{span bar}} \right) \right] \text{ in \% of span}$ <p>In Digital Mode: ±0.0625% of calibrated span or upper range value (URV), whichever is greater, terminal based.</p> <p>For URV below reference point (20 psi), accuracy equals:</p> $\pm \left[0.0125 + 0.05 \left(\frac{20 \text{ psi}}{\text{span psi}} \right) \right] \text{ or } \pm \left[0.0125 + 0.05 \left(\frac{1.4 \text{ bar}}{\text{span bar}} \right) \right] \text{ in \% of span}$
Zero Temperature Effect per 28°C (50°F)	<p>In Analog Mode: ±0.1625% of span.</p> <p>For URV below reference point (50 psi), effect equals:</p> $\pm \left[0.0125 + 0.15 \left(\frac{50 \text{ psi}}{\text{span psi}} \right) \right] \text{ or } \pm \left[0.0125 + 0.15 \left(\frac{3.5 \text{ bar}}{\text{span bar}} \right) \right] \text{ in \% of span}$ <p>In Digital Mode: ±0.15% of span.</p> <p>For URV below reference point (50 psi), effect equals:</p> $\pm 0.15 \left(\frac{50 \text{ psi}}{\text{span psi}} \right) \text{ or } \pm 0.15 \left(\frac{3.5 \text{ bar}}{\text{span bar}} \right) \text{ in \% of span}$
Combined Zero and Span Temperature Effect per 28°C (50°F)	<p>In Analog Mode: ±0.25% of span.</p> <p>For URV below reference point (50 psi), effect equals:</p> $\pm \left[0.10 + 0.15 \left(\frac{50 \text{ psi}}{\text{span psi}} \right) \right] \text{ or } \pm \left[0.10 + 0.15 \left(\frac{3.5 \text{ bar}}{\text{span bar}} \right) \right] \text{ in \% of span}$ <p>In Digital Mode: ±0.225% of span.</p> <p>For URV below reference point (50 psi), effect equals:</p> $\pm \left[0.075 + 0.15 \left(\frac{50 \text{ psi}}{\text{span psi}} \right) \right] \text{ or } \pm \left[0.075 + 0.15 \left(\frac{3.5 \text{ bar}}{\text{span bar}} \right) \right] \text{ in \% of span}$
Stability	±0.015% of URL per year

* Performance specifications are based on reference conditions of 25°C (77°F), 10 to 55% RH, and 316L Stainless Steel barrier diaphragm.

Performance Under Rated Conditions* - Models STG974 & 97L (0 to 3000 psi/210 bar)

Parameter	Description
Upper Range Limit psi bar	3000 210
Minimum Span psi bar	300 21
Turndown Ratio	10 to 1
Zero Elevation and Suppression	No limit except minimum span from absolute 0 (zero) to +100% URL. Specifications valid over this range.
Accuracy (Reference – Includes combined effects of linearity, hysteresis, and repeatability) <ul style="list-style-type: none"> • Accuracy includes residual error after averaging successive readings. • For FOUNDATION Fieldbus use Digital Mode specifications. For HART use Analog Mode specifications. 	<p>In Analog Mode: ±0.10% of calibrated span or upper range value (URV), whichever is greater, terminal based. For URV below reference point (750 psi), accuracy equals:</p> $\pm \left[0.05 + 0.05 \left(\frac{750 \text{ psi}}{\text{span psi}} \right) \right] \text{ or } \pm \left[0.05 + 0.05 \left(\frac{52 \text{ bar}}{\text{span bar}} \right) \right] \text{ in \% of span}$ <p>In Digital Mode: ±0.075% of calibrated span or upper range value (URV), whichever is greater, terminal based. For URV below reference point (300 psi), accuracy equals:</p> $\pm \left[0.025 + 0.05 \left(\frac{750 \text{ psi}}{\text{span psi}} \right) \right] \text{ or } \pm \left[0.025 + 0.05 \left(\frac{52 \text{ bar}}{\text{span bar}} \right) \right] \text{ in \% of span}$
Zero Temperature Effect per 28°C (50°F)	<p>In Analog Mode: ±0.2125% of span. For URV below reference point (500 psi), effect equals:</p> $\pm \left[0.0125 + 0.20 \left(\frac{500 \text{ psi}}{\text{span psi}} \right) \right] \text{ or } \pm \left[0.0125 + 0.20 \left(\frac{35 \text{ bar}}{\text{span bar}} \right) \right] \text{ in \% of span}$ <p>In Digital Mode: ±0.20% of span. For URV below reference point (500 psi), effect equals:</p> $\pm 0.20 \left(\frac{500 \text{ psi}}{\text{span psi}} \right) \text{ or } \pm 0.20 \left(\frac{35 \text{ bar}}{\text{span bar}} \right) \text{ in \% of span}$
Combined Zero and Span Temperature Effect per 28°C (50°F)	<p>In Analog Mode: ±0.325% of span. For URV below reference point (500 psi), effect equals:</p> $\pm \left[0.125 + 0.20 \left(\frac{500 \text{ psi}}{\text{span psi}} \right) \right] \text{ or } \pm \left[0.125 + 0.20 \left(\frac{35 \text{ bar}}{\text{span bar}} \right) \right] \text{ in \% of span}$ <p>In Digital Mode: ±0.30% of span. For URV below reference point (500 psi), effect equals:</p> $\pm \left[0.10 + 0.20 \left(\frac{500 \text{ psi}}{\text{span psi}} \right) \right] \text{ or } \pm \left[0.10 + 0.20 \left(\frac{35 \text{ bar}}{\text{span bar}} \right) \right] \text{ in \% of span}$
Stability	±0.03% of URL per year

* Performance specifications are based on reference conditions of 25°C (77°F), 10 to 55% RH, and 316L Stainless Steel barrier diaphragm.

Performance Under Rated Conditions* - Model STG98L (0 to 6000 psi/415 bar)

Parameter	Description
Upper Range Limit psi bar	6000 415
Minimum Span psi bar	500 35
Turndown Ratio	12 to 1
Zero Elevation and Suppression	No limit except minimum span from absolute 0 (zero) to +100% URL. Specifications valid over this range.
<p>Accuracy (Reference – Includes combined effects of linearity, hysteresis, and repeatability)</p> <ul style="list-style-type: none"> • Accuracy includes residual error after averaging successive readings. • For FOUNDATION Fieldbus use Digital Mode specifications. For HART use Analog Mode specifications. 	<p>In Analog Mode: ±0.10% of calibrated span or upper range value (URV), whichever is greater, terminal based. For URV below reference point (1500 psi), accuracy equals:</p> $\pm \left[0.05 + 0.05 \left(\frac{1500 \text{ psi}}{\text{span psi}} \right) \right] \text{ or } \pm \left[0.05 + 0.05 \left(\frac{104 \text{ bar}}{\text{span bar}} \right) \right] \text{ in \% of span}$ <p>In Digital Mode: ±0.075% of calibrated span or upper range value (URV), whichever is greater, terminal based. For URV below reference point (1500 psi), accuracy equals:</p> $\pm \left[0.025 + 0.05 \left(\frac{1500 \text{ psi}}{\text{span psi}} \right) \right] \text{ or } \pm \left[0.025 + 0.05 \left(\frac{104 \text{ bar}}{\text{span bar}} \right) \right] \text{ in \% of span}$
Zero Temperature Effect per 28°C (50°F)	<p>In Analog Mode: ±0.2125% of span. For URV below reference point (1500 psi), effect equals:</p> $\pm \left[0.0125 + 0.20 \left(\frac{1500 \text{ psi}}{\text{span psi}} \right) \right] \text{ or } \pm \left[0.0125 + 0.20 \left(\frac{104 \text{ bar}}{\text{span bar}} \right) \right] \text{ in \% of span}$ <p>In Digital Mode: ±0.20% of span. For URV below reference point (1500 psi), effect equals:</p> $\pm 0.20 \left(\frac{1500 \text{ psi}}{\text{span psi}} \right) \text{ or } \pm 0.20 \left(\frac{70 \text{ bar}}{\text{span bar}} \right) \text{ in \% of span}$
Combined Zero and Span Temperature Effect per 28°C (50°F)	<p>In Analog Mode: ±0.325% of span. For URV below reference point (1500 psi), effect equals:</p> $\pm \left[0.125 + 0.20 \left(\frac{1500 \text{ psi}}{\text{span psi}} \right) \right] \text{ or } \pm \left[0.125 + 0.20 \left(\frac{104 \text{ bar}}{\text{span bar}} \right) \right] \text{ in \% of span}$ <p>In Digital Mode: ±0.30% of span. For URV below reference point (1500 psi), effect equals:</p> $\pm \left[0.10 + 0.20 \left(\frac{1500 \text{ psi}}{\text{span psi}} \right) \right] \text{ or } \pm \left[0.10 + 0.20 \left(\frac{104 \text{ bar}}{\text{span bar}} \right) \right] \text{ in \% of span}$
Stability	±0.03% of URL per year

* Performance specifications are based on reference conditions of 25°C (77°F), 10 to 55% RH, and 316L Stainless Steel barrier diaphragm.

Performance Under Rated Conditions* - Model STG99L (0 to 10000 psi/690 bar)

Parameter	Description
Upper Range Limit psi bar	10000 690
Minimum Span psi bar	500 35
Turndown Ratio	20 to 1
Zero Elevation and Suppression	No limit except minimum span from absolute 0 (zero) to +100% URL. Specifications valid over this range.
Accuracy (Reference – Includes combined effects of linearity, hysteresis, and repeatability) <ul style="list-style-type: none"> • Accuracy includes residual error after averaging successive readings. • For FOUNDATION Fieldbus use Digital Mode specifications. For HART use Analog Mode specifications. 	<p>In Analog Mode: ±0.10% of calibrated span or upper range value (URV), whichever is greater, terminal based.</p> <p>For URV below reference point (2500 psi), accuracy equals:</p> $\pm \left[0.05 + 0.05 \left(\frac{2500 \text{ psi}}{\text{span psi}} \right) \right] \text{ or } \pm \left[0.05 + 0.05 \left(\frac{172 \text{ bar}}{\text{span bar}} \right) \right] \text{ in \% of span}$ <p>In Digital Mode: ±0.075% of calibrated span or upper range value (URV), whichever is greater, terminal based.</p> <p>For URV below reference point (2500 psi), accuracy equals:</p> $\pm \left[0.025 + 0.05 \left(\frac{2500 \text{ psi}}{\text{span psi}} \right) \right] \text{ or } \pm \left[0.025 + 0.05 \left(\frac{172 \text{ bar}}{\text{span bar}} \right) \right] \text{ in \% of span}$
Zero Temperature Effect per 28°C (50°F)	<p>In Analog Mode: ±0.2125% of span.</p> <p>For URV below reference point (2500 psi), effect equals:</p> $\pm \left[0.0125 + 0.20 \left(\frac{2500 \text{ psi}}{\text{span psi}} \right) \right] \text{ or } \pm \left[0.0125 + 0.20 \left(\frac{172 \text{ bar}}{\text{span bar}} \right) \right] \text{ in \% of span}$ <p>In Digital Mode: ±0.20% of span.</p> <p>For URV below reference point (2500 psi), effect equals:</p> $\pm 0.20 \left(\frac{2500 \text{ psi}}{\text{span psi}} \right) \text{ or } \pm 0.20 \left(\frac{172 \text{ bar}}{\text{span bar}} \right) \text{ in \% of span}$
Combined Zero and Span Temperature Effect per 28°C (50°F)	<p>In Analog Mode: ±0.325% of span.</p> <p>For URV below reference point (2500 psi), effect equals:</p> $\pm \left[0.125 + 0.20 \left(\frac{2500 \text{ psi}}{\text{span psi}} \right) \right] \text{ or } \pm \left[0.125 + 0.20 \left(\frac{172 \text{ bar}}{\text{span bar}} \right) \right] \text{ in \% of span}$ <p>In Digital Mode: ±0.30% of span.</p> <p>For URV below reference point (2500 psi), effect equals:</p> $\pm \left[0.10 + 0.20 \left(\frac{2500 \text{ psi}}{\text{span psi}} \right) \right] \text{ or } \pm \left[0.10 + 0.20 \left(\frac{172 \text{ bar}}{\text{span bar}} \right) \right] \text{ in \% of span}$
Stability	±0.03% of URL per year

* Performance specifications are based on reference conditions of 25°C (77°F), 10 to 55% RH, and 316L Stainless Steel barrier diaphragm.

Performance Under Rated Conditions - General for all Models

Parameter	Description
Output (two-wire)	Analog 4 to 20 mA or DE digital communications mode. Options available for FOUNDATION Fieldbus and HART protocol.
Supply Voltage Effect	0.005% of span per volt.
Damping Time Constant	Adjustable from 0 to 32 seconds digital damping.
CE Conformity (Europe)	89/336/EEC, Electromagnetic Compatibility (EMC) Directive.
NAMUR NE 43 Compliance Option	Transmitter failure information is generated when the measuring information is invalid or no longer present. Failure information is transmitted as a current signal but outside the normal 4-20 mA measurement signal level. Transmitter failure values are: ≤ 3.6 mA and ≥ 21.0 mA. The normal signal range is ≥ 3.8 mA and ≤ 20.5 mA.
Lightning Protection Option (Code "LP")	Leakage Current: 10 microamps max. @ 42.4 VDC, 93°C Impulse Rating: 10/20 μ sec. 5,000 Amps (50 strikes) 10,000 Amps (20 strikes) (rise/decay) 10/1000 μ sec. 250 Amps (1000 strikes) 500 Amps (400 strikes)

Physical and Approval Bodies

Parameter	Description
Barrier Diaphragm Material	Dual-Head Meter Body: 316L SS, Hastelloy C-276, Monel 400, Tantalum In-Line Meter Body: 316L SS, Hastelloy C-276
Process Head Material	Dual-Head Meter Body: Carbon Steel (zinc-plated), 316 SS, Hastelloy C-276, Monel. [Standard reference head is Carbon Steel (zinc-plated). Optional reference head is 316 SS.] In-Line Meter Body: 316L SS process interface.
Head Gaskets	Teflon is standard. Viton is available.
Meter Body Bolting	Carbon Steel (Zinc plated) standard. Options include 316 SS, NACE A286 SS bolts with 304 SS nuts, and B7M.
Mounting Bracket	Carbon Steel (Zinc-plated) or Stainless Steel angle bracket or Carbon Steel flat bracket available.
Fill Fluid	Silicone oil or CTFE (Chlorotrifluoroethylene)
Electronic Housing	Epoxy-Polyester hybrid paint. Low Copper-Aluminum. Meets NEMA 4X (watertight) and NEMA 7 (explosion proof). 316 SS optional.
Process Connections	Dual-Head Meter Body: 1/4-inch F-NPT and DIN 19213 are standard. 1/2-inch F-NPT with optional adapter flange. In-Line Meter Body: 1/2-inch F-NPT, 1/2 inch M-NPT, 9/16 AMINCO, DIN 19213
Wiring	Accepts up to 16 AWG (1.5 mm diameter).
Mounting	Can be mounted in virtually any position using the standard mounting bracket. Bracket is designed to mount on 2-inch (50 mm) vertical or horizontal pipe. See Figure 3 for dual-head models, and Figure 4 for in-line models.
Dimensions	See Figures 5 and 6.
Net Weight	With Dual-Head Meter Body: 9 pounds (4.1 Kg) With In-Line Meter Body: 4.5 pounds (2.0 Kg)
Approval Bodies Hazardous Areas	Approved as explosion proof and intrinsically safe for use in Class I, Division 1, Groups A, B, C, D locations, and nonincendive for Class I, Division 2, Groups A, B, C, D locations. Approved EEx ia IIC T4, T5, T6 and EEx d IIC T5, T6 per ATEX standards. See attached Model Selection Guide for options.
Canadian Registration Number (CRN)	All ST 3000 model designs, except STG19L, STG99L, STG170, STG180, have been registered in all provinces and territories in Canada and are marked CRN: 0F8914.5C.
Pressure Equipment Directive (97/23/EC)	The ST 3000 pressure transmitters listed in this Specification have no pressurized internal volume or have a pressurized internal volume rated less than 1,000 bar (14,500 psig) and/or have a maximum volume of less than 0.1 liter. Therefore, these transmitters are either; not subject to the essential requirements of the directive 97/23/EC (PED, Annex 1) and shall not have the CE mark, or the manufacturer has the free choice of a module when the CE mark is required for pressures > 200 bar (2,900 psig).

NOTE: Pressure transmitters that are part of safety equipment for the protection of piping (systems) or vessel(s) from exceeding allowable pressure limits, (equipment with safety functions in accordance with Pressure Equipment Directive 97/23/EC article 1, 2.1.3), require separate examination.

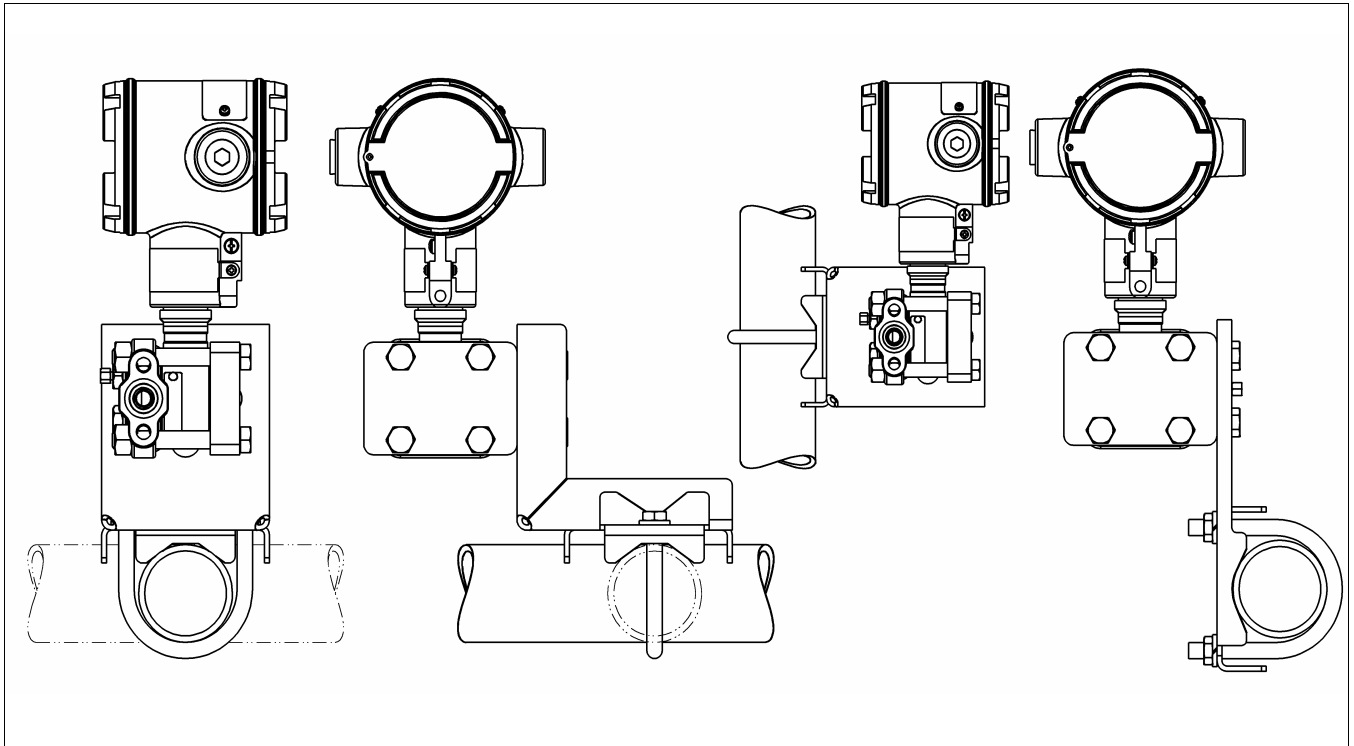


Figure 3—Examples of typical mounting positions for dual-head models STG944 and STG974

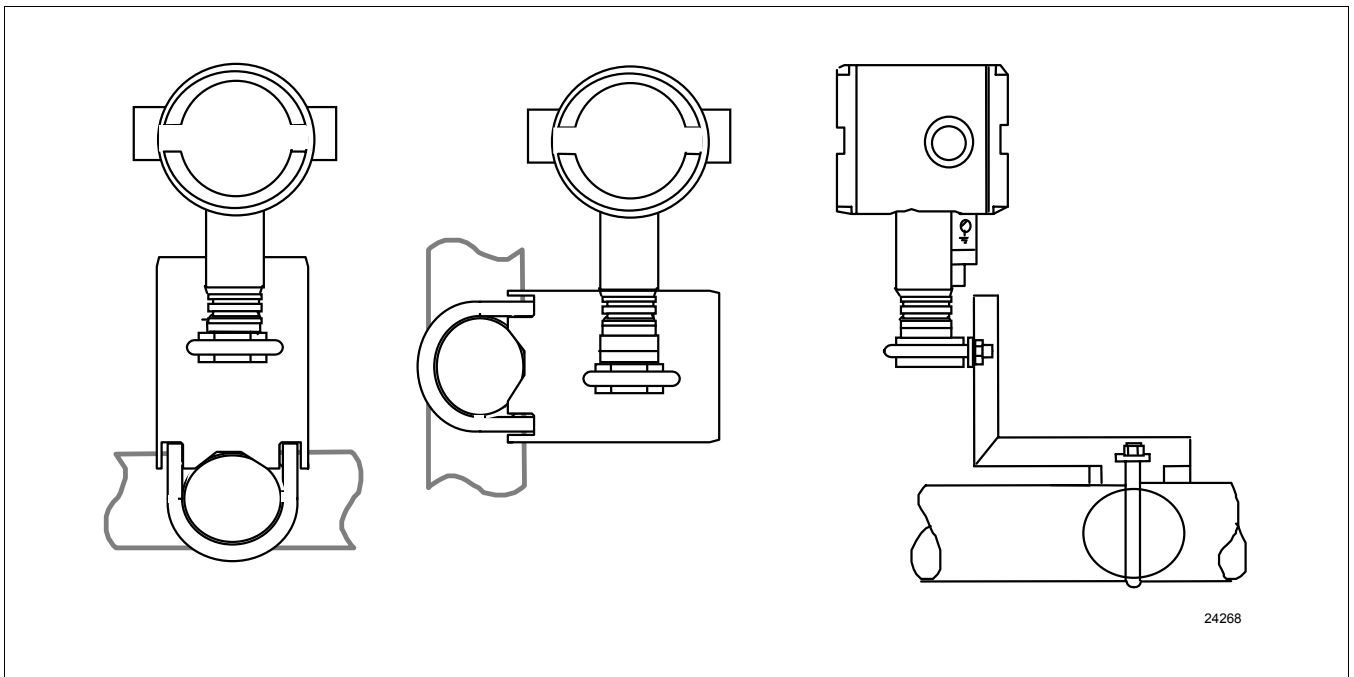


Figure 4—Examples of typical mounting positions for in-line models STG94L, STG97L, STG98L, and STG99L. Note that a mounting bracket is not required for in-line models.

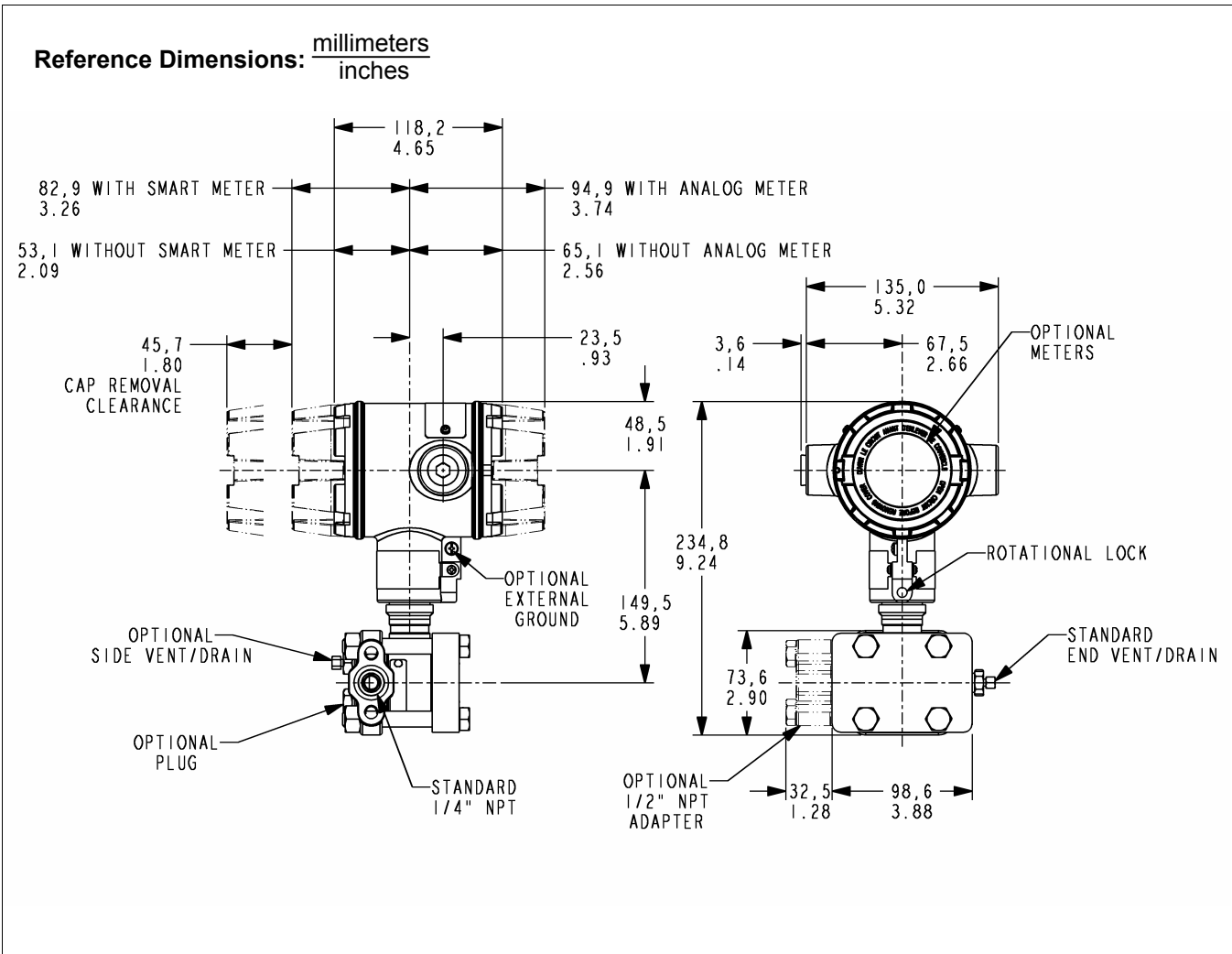


Figure 5—Typical mounting dimensions for dual-head models STG944 and STG974 for reference

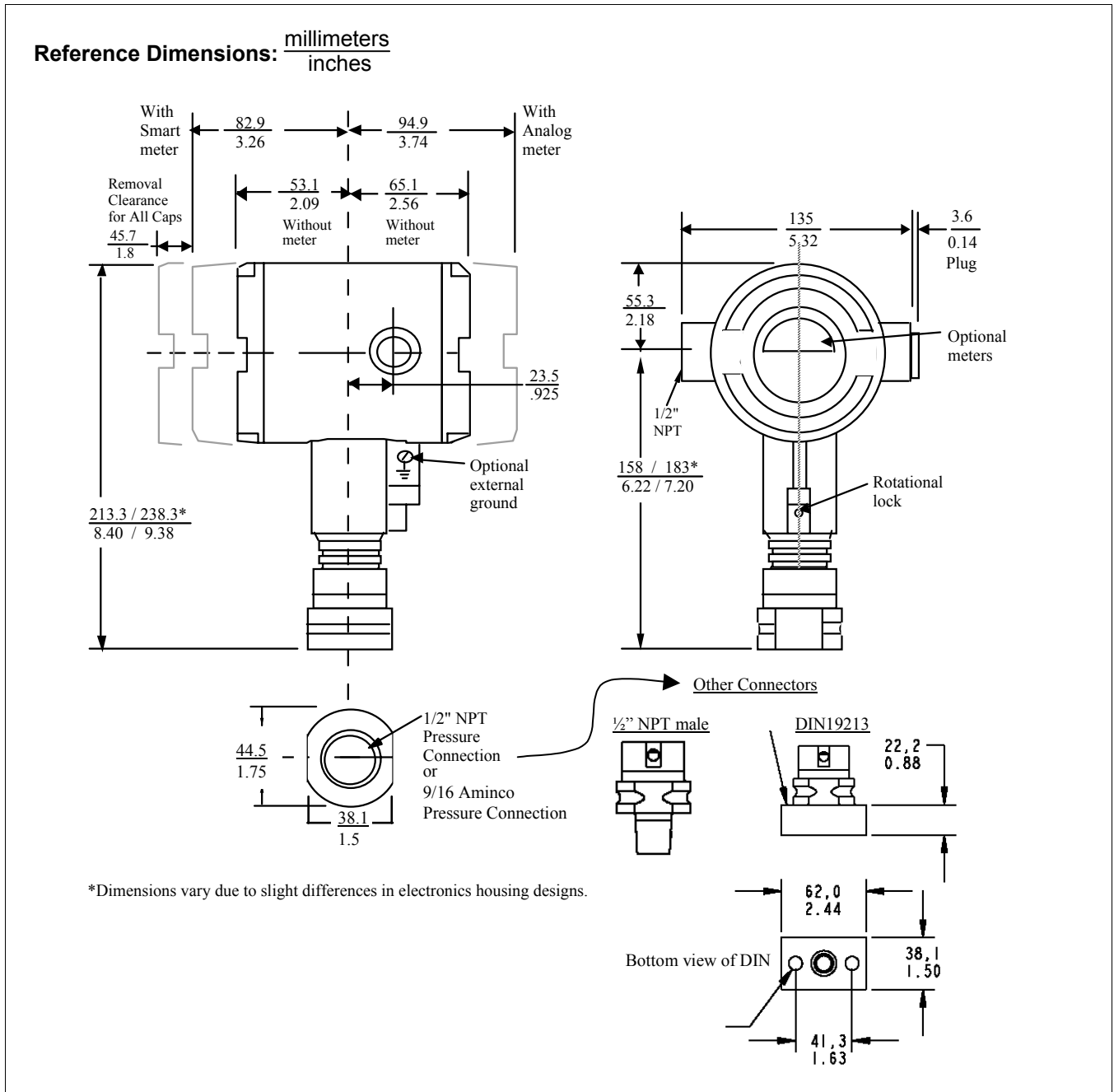


Figure 6—Typical mounting dimensions for in-line models STG94L, STG97L, STG98L, and STG99L for reference

Options

Mounting Bracket

The angle mounting bracket is available in either zinc-plated carbon steel or stainless steel and is suitable for horizontal or vertical mounting on a two inch (50 millimeter) pipe, as well as wall mounting. An optional flat mounting bracket is also available in carbon steel for two inch (50 millimeter) pipe mounting.

**Indicating Meter
(ME and SM Options)**

Two integral meter options are available. An analog meter (option ME) is available with a 0 to 100% linear scale. The Smart Meter (option SM) provides an LCD display for both analog and digital output and can be configured to display pressure in pre-selected engineering units.

**Lightning Protection
(Option LP)**

A terminal block is available with circuitry that protects the transmitter from transient surges induced by nearby lightning strikes.

**HART Protocol Compatibility
(Option HC)**

An optional electronics module is available for the ST 3000 that provides HART Protocol compatibility. Transmitters with the HART Option are compatible with the AMS System. (Contact your AMS Supplier if an upgrade is required.)

**Indicator Configuration
(Option CI)**

Provides custom configuration of Smart Meters

Tagging (Option TG)

Up to 30 characters can be added on the stainless steel nameplate mounted on the transmitter's electronics housing at no extra cost. Note that a separate nameplate on the meter body contains the serial number and body-related data. A stainless steel wired on tag with additional data of up to 4 lines of 28 characters is also available. The number of characters for tagging includes spaces.

**Transmitter Configuration
(Option TC)**

The factory can configure the transmitter linear/square root extraction, damping time, LRV, URV and mode (analog/digital) and enter an ID tag of up to eight characters and scratchpad information as specified.

**Custom Calibration and ID in
Memory (Option CC)**

The factory can calibrate any range within the scope of the transmitter's range and enter an ID tag of up to eight characters in the transmitter's memory.

**FOUNDATION Fieldbus
(Option FF)**

Equips transmitter with FF protocol for use in 31.25 kbit/s FF networks. See document 34-ST-03-72 for additional information on ST 3000 Fieldbus transmitters.

Ordering Information

Contact your nearest Honeywell sales office, or

In the U.S.:

Honeywell
Industrial Automation & Control
2500 W. Union Hills Ave
Phoenix, AZ 85053
1-800-288-7491

In Canada:

The Honeywell Centre
155 Gordon Baker Rd.
North York, Ontario M2H 3N7
1-800-461-0013

In Latin America:

Honeywell Inc.
480 Sawgrass Corporate Parkway,
Suite 200
Sunrise, FL 33325
(954) 845-2600

In Europe and Africa:

Honeywell S. A.
Avenue du Bourget 1
1140 Brussels, Belgium

In Eastern Europe:

Honeywell Praha,
s.r.o. Budejovicka 1
140 21 Prague 4,
Czech Republic

In the Middle East:

Honeywell Middle East Ltd.
Khalifa Street,
Sheikh Faisal Building
Abu Dhabi, U. A. E.

In Asia:

Honeywell Asia Pacific Inc.
Honeywell Building,
17 Changi Business Park Central 1
Singapore 486073
Republic of Singapore

In the Pacific:

Honeywell Pty Ltd.
5 Thomas Holt Drive
North Ryde NSW Australia 2113
(61 2) 9353 7000

In Japan:

Honeywell K.K.
14-6 Shibaura 1-chrome
Minato-ku, Tokyo, Japan 105-0023

Specifications are subject to change without notice.

(Note that specifications may differ slightly for transmitters manufactured before October 30, 1995.)

Or, visit Honeywell on the World Wide Web at: <http://www.honeywell.com>

Model Selection Guide (34-ST-16-26)

Instructions

- Select the desired Key Number. The arrow to the right marks the selection available.
- Make one selection from each table, I and II, using the column below the proper arrow.

Select as many Table III options as desired (if no options or approvals are desired, specify 9X).
A (♦) denotes unrestricted availability. A letter denotes restricted availability.
Restrictions follow Table IV.

Key Number	I	II	III (Optional)	IV
-----	-----	-----	-----	-----
-----	-----	-----	-----	XXXX

KEY NUMBER	Span	Selection	Availability
Gage	0-20 to 0-500 psi/0-1.4 to 0-35 bar	STG944	↓
Pressure	0-300 to 0-3000 psi/0-21 to 0-210 bar	STG974	↓
Absolute	0-50 to 0-780 mmHgA/0-67 to 0-1040 mbarA	STA922	↓
Pressure	0-20 to 0-500 psia/0-1.4 to 0-35 barA	STA940	↓

TABLE I - METER BODY

	Wetted Process Head ***	Vent/Drain Valve **	Barrier Diaphragms			
	Material of Construction	Carbon Steel *	316 SS			
Carbon Steel *		316 SS	Hastelloy C	B __	♦	♦
Carbon Steel *		316 SS	Monel	C __	♦	
Carbon Steel *		316 SS	Tantalum	D __	♦	
316 SS		316 SS	316L SS	E __	♦	♦
316 SS		316 SS	Hastelloy C	F __	♦	♦
316 SS		316 SS	Monel	G __	♦	
316 SS		316 SS	Tantalum	H __	♦	
Hastelloy C		Hastelloy C	Hastelloy C	J __	♦	♦
Hastelloy C		Hastelloy C	Tantalum	K __	♦	
Monel	Monel	Monel	L __	♦		
Fill Fluid	Silicone DC200 ****			_ 1 _	♦	♦
	CTFE			_ 2 _	♦	♦
Process Head	1/4" NPT			_ _ A	♦	
Configuration	1/2" NPT with Adapter			_ _ G	t	
	1/2" NPT			_ _ G		♦

TABLE II

No Selection	00000	♦	♦
--------------	-------	---	---

* Carbon Steel heads are zinc-plated. Not recommended for water service due to hydrogen migration.
Use Stainless Steel heads.

** Vent/Drains are Teflon coated for lubricity.

*** The standard reference head for the STG9XX is carbon steel (zinc-plated).

See Table III for a stainless steel reference (HR) head option.

**** If STA922 operating below 50mm HgA, see Figure 2 in Specification 34-ST-03-65 and contact Marketing Applications for a "Special" Silicone DC704 quote.

Note: End vent drain valve standard for STG9XX.
End vent drain valves are not available on STA9XX.

Model Selection Guide, cont.

Effective Date: January 09, 2006

TABLE III - OPTIONS	Selection	Availability	
		44 74	22 40
None	00	♦	♦
Communication Options			
HART® Protocol Compatible Electronics	HC	e	e b
FOUNDATION Fieldbus Communications	FF	r	r b
Indicating Meter Options			
Analog Meter (0-100 Even 0-10 Square Root)	ME	♦	♦ b
Smart Meter	SM	♦	♦ b
Custom Configuration of Smart Meter	CI	m	m b
Local Zero	LZ	x	x b
Local Zero and Span	ZS	s	s b
Transmitter Housing & Electronics Options			
NAMUR Failsafe Software	NE	15	15
Lightning Protection	LP	♦	♦
Custom Calibration and I.D. in Memory	CC	♦	♦
Transmitter Configuration	TC	♦	♦
Write Protection	WP	♦	♦
316 SS Electronics Housing - with M20 Conduit Connections	SH	n	n b
1/2" NPT to M20 316 SS Conduit Adapter (BASEEFA EEx d IIC)	A1	n	n b
1/2" NPT to 3/4" NPT 316 SS Conduit Adapter	A2	i	i b
Stainless Steel Housing with M20 to 1/2" NPT 316 SS Conduit Adapter (use for FM and CSA Approvals)	A3	i	i b
Stainless Steel Customer Wired-On Tag (4 lines, 28 characters per line, customer supplied information)	TG	♦	♦
Stainless Steel Customer Wired-On Tag (blank)	TB	♦	♦
Low Temperature - -50°C Ambient Limit	LT	z	z
End Cap Live Circuit Warning Label in Spanish (only with ATEX 3D)	SP	a	a b
End Cap Live Circuit Warning Label in Portuguese (only with ATEX 3D)	PG	a	a b
End Cap Live Circuit Warning Label in Italian (only with ATEX 3D)	TL	a	a b
End Cap Live Circuit Warning Label in German (only with ATEX 3D)	GE	a	a b
Meter Body Options			
A286 SS (NACE) Bolts and 304 SS (NACE) Nuts for Process Heads	CR	♦	♦ b
316 SS Bolts and 316 SS Nuts for Process Heads	SS	♦	♦ b
B7M Bolts and Nuts for Process Heads	B7	♦	♦
316 SS Adapter Flange - 1/2" NPT with CS Bolts	S2	c	c
316 SS Adapter Flange - 1/2" NPT with 316 SS Bolts	S3	c	c
316 SS Adapter Flange - 1/2" NPT with NACE A286 SS Bolts	S4	c	c
316 SS Adapter Flange - 1/2" NPT with B7M Bolts	S5	c	c b
Hastelloy C Adapter Flange - 1/2" NPT with CS Bolts	T2	c	c b
Hastelloy C Adapter Flange - 1/2" NPT with 316 SS Bolts	T3	c	c b
Monel Adapter Flange - 1/2" NPT with CS Bolts	V2	c	c
Monel Adapter Flange - 1/2" NPT with 316 SS Bolts	V3	c	c
316 SS Blind Adapter Flange with CS Bolts	B3	♦	♦
316 SS Blind Adapter Flange with 316 SS Bolts	B4	♦	♦
316 SS Blind Adapter Flange with NACE A286 SS Bolts	B5	♦	♦ b
316 SS Blind Adapter Flange with B7M Bolts	B6	♦	♦ b
316 SS Center Vent Drain and Bushing	CV	♦	♦
Side Vent/Drain (End Vent Drain is standard)	SV	♦	♦
Viton Process Head Gaskets	VT	♦	♦
Viton Adapter Flange Gaskets	VF	♦	♦
316 SS Reference Head (Carbon Steel Standard)	HR	♦	♦
Modified DIN Process Heads - 316 SS	DN		v
Graphite Process Head Gasket	GF	♦	♦
Transmitter Mounting Bracket Options			
Mounting Bracket - Carbon Steel	MB	♦	♦ b
Mounting Bracket - 304 SS	SB	♦	♦ b
Flat Mounting Bracket - Carbon Steel	FB	♦	♦

Table III continued next page

Model Selection Guide, cont.

			Availability	
			STA9	STG9
			44	22
			74	40
TABLE III - OPTIONS (continued)			Selection	
Diaphragm Options				
Gold plated diaphragm(s) on 316 SS			G1	♦
Gold plated diaphragm(s) on Monel or Hastelloy ONLY			G2	♦
Services/Certificates/Marine Type Approval Options				
User's Manual Paper Copy (Standard, HC, or FF ships accordingly)			UM	♦ ♦
Clean Transmitter for Oxygen or Chlorine Service with Certificate			0X	h h
Over-Pressure Leak Test with F3392 Certificate			TP	♦ ♦
Calibration Test Report and Certificate of Conformance (F3399)			F1	♦ ♦
Certificate of Conformance (F3391)			F3	♦ ♦
Certificate of Origin (F0195)			F5	♦ ♦
FMEDA (SIL) Certificate			F6	♦ ♦
NACE Certificate (F0198)			F7	o o
Marine Type Approvals (DNV, ABS, BV & LR)			MT	2 2
Warranty Options				
Additional Warranty - 1 year			W1	♦ ♦
Additional Warranty - 2 years			W2	♦ ♦
Additional Warranty - 3 years			W3	♦ ♦
Additional Warranty - 4 years			W4	♦ ♦
Approval				
Body	Approval Type	Location or Classification		
No hazardous location approvals			9X	♦ ♦
Factory Mutual	Explosion Proof	Class I, Div. 1, Groups A,B,C,D	1C	♦ ♦
	Dust Ignition Proof	Class II, III Div. 1, Groups E,F,G		
	Non-Incendive	Class I, Div. 2, Groups A,B,C,D		
	Intrinsically Safe	Class I, II, III, Div. 1, Groups A,B,C,D,E,F,G		
CSA	Explosion Proof	Class I, Div. 1, Groups B,C,D	2J	f ♦
	Dust Ignition Proof	Class II, III, Div. 1, Groups E,F,G		
	Intrinsically Safe	Class I, II, III, Div. 1, Groups A,B,C,D,E,F,G		
SA (Australia)	Intrinsically Safe	Ex ia IIC T4	4G	♦ ♦
	Non-Sparking	Ex n IIC T6 (T4 with SM option)		
ATEX*	Intrinsically Safe, Zone 0/1	Ex II I G EEx ia IIC T4, T5, T6	3S	♦ ♦
	Flameproof, Zone 1	Ex II 2 G EEx d IIC T5, T6, Enclosure IP 66/67	3D	♦ ♦
	Non-Sparking, Zone 2	Ex II 3 G EEx nA, IIC T6 (Honeywell). Enclosure IP 66/67	3N	♦ ♦
	Multiple Marking** Int. Safe, Zone 0/1, or Flameproof, Zone 1, or Non-Sparking, Zone 2	Ex II 1 G EEx ia IIC T4, T5, T6 Ex II 2 G EEx d IIC T5, T6 Ex II 3 G EEx nA, IIC T6 (Honeywell) Enclosure IP 66/67	3H	♦ ♦
INMETRO (Brazil)	Flameproof, Zone 1	Ex d IIC T5	6D	♦ ♦

*See ATEX installation requirements in the ST 3000 User's Manual

** The user must determine the type of protection required for installation of the equipment. The user shall then check the box [✓] adjacent to the type of protection used on the equipment certification nameplate. Once a type of protection has been checked on the nameplate, subsequently the equipment shall not be reinstalled using any of the other certification types.

TABLE IV

Factory Identification	XXXX	♦ ♦
------------------------	------	-----

Model Selection Guide, cont.

RESTRICTIONS

Restriction Letter	Available Only With		Not Available With	
	Table	Selection	Table	Selection
a	III	3D or 3H		
b	Select only one option from this group			
c	I	-- G		
e			III	4G
f			Key # I	STG974 L __
h	I	_ 2 _		
i	III	1C or 2J		
m	III	SM		
n			III	1C, 2J
o	III	CR, S4, B5		
r			III	TC, ME, 4G
s			III	FF, ME
t	III	Select from Table III S2,S3,S4 S5,T2,T3,V2,V3		
v	I	E _ G, F _ G		
x	III	FF, SM		
z			Key #	STG974
2			III	FB
15			III	FF

Note: See ST-83 for Published Specials with pricing.
 See ST-89 and User's Manual for part numbers.
 See ST-OE-9 for OMS Order Entry Information including TC, manuals, certificates, drawings and SPINS.
 See ST-OD-1 for tagging, ID, Transmitter Configuration (TC) and calibration including factory default values.
 To request a quotation for a non-published "special", fax RFQ to Marketing Applications.
 See ST-OE-9 for OMS Order Entry Information including TC, manuals,

Model Selection Guide (34-ST-16-28)

Instructions

- Select the desired Key Number. The arrow to the right marks the selection available.
- Make one selection from each table, I and II, using the column below the proper arrow.
Select as many Table III options as desired (if no options or approvals are desired, specify 9X).
A (♦) denotes unrestricted availability. A letter denotes restricted availability.
Restrictions follow Table IV.

Key Number - I - II - III (Optional) + IV
_ _ _ _ _ - _ _ _ - _ _ _ _ _ - _ _ , _ , _ _ + XXXX

KEY NUMBER	Span	Selection	Availability	
Gage Pressure	0-20 to 0-500 psig/0-1.4 to 0-35 bar	STG94L	↓	
	0-300 to 0-3000 psig/0-21 to 0-210 bar	STG97L	↓	
	0-500 to 0-6000 psig/0-35 to 0-415 bar	STG98L	↓	
	0-500 to 0-10000 psig/0-35 to 0-690 bar	STG99L	↓	↓
Absolute Pressure	0-50 to 0-780 mmHg/0-67 to 0-1040 mbarA	STA92L	↓	
	0-20 to 0-500 psia/0-1.4 to 0-35 barA	STA94L	↓	

TABLE I - METER BODY

Material of Construction	Wetted Process Heads	Vent/Drain Valves **	Barrier Diaphragms			
	316 SS	--	316L SS	E _ _	♦	♦
	316 SS	--	Hastelloy C	F _ _	♦	♦
Fill Fluid	Silicone			_ 1 _	♦	♦
	CTFE			_ 2 _	♦	♦
Process Connection Configuration	9/16" - 18 Aminco			_ _ A	♦	♦
	1/2" NPT (female)			_ _ G	♦	♦
	1/2" NPT (male)			_ _ H	♦	♦
	DIN 19213			_ _ D	♦	

TABLE II

No Selection	00000	♦	♦
--------------	-------	---	---

** Vent/Drains are Teflon coated for lubricity.

Model Selection Guide (34-ST-16-28, cont'd)

Effective Date: January 09, 2006

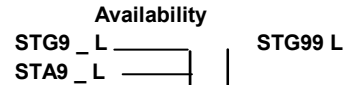


TABLE III - OPTIONS

	Selection	↓	↓	
None	00	♦	♦	
Communication Options				
HART® Protocol Compatible Electronics	HC	y	y	b
FOUNDATION Fieldbus Communications	FF	r	r	b
Indicating Meter Options				
Analog Meter (0-100 Even 0-10 Square Root)	ME	♦	♦	b
Smart Meter	SM	♦	♦	b
Custom Configuration of Smart Meter	CI	m	m	
Local Zero	LZ	x	x	b
Local Zero and Span	ZS	s	s	b
Transmitter Housing & Electronics Options				
NAMUR Failsafe Software	NE	15	15	
Lightning Protection	LP	♦	♦	
Custom Calibration and I.D. in Memory	CC	♦	♦	
Transmitter Configuration	TC	♦	♦	
Write Protection	WP	♦	♦	
316 SS Electronics Housing - with M20 Conduit Connections	SH	n	n	b
1/2" NPT to M20 316 SS Conduit Adapter (BASEEFA EEx d IIC)	A1	n	n	b
1/2" NPT to 3/4" NPT 316 SS Conduit Adapter	A2	u	u	b
Stainless Steel Housing with M20 to 1/2" NPT 316 SS Conduit Adapter (use for FM and CSA Approvals)	A3	i	i	b
Stainless Steel Customer Wired-On Tag (4 lines, 28 characters per line, customer supplied information)	TG	♦	♦	
Stainless Steel Customer Wired-On Tag (blank)	TB	♦	♦	
Low Temperature - -50°C Ambient Limit	LT	♦	♦	
End Cap Live Circuit Warning Label in Spanish (only with ATEX 3D)	SP	a	a	b
End Cap Live Circuit Warning Label in Portuguese (only with ATEX 3D)	PG	a	a	b
End Cap Live Circuit Warning Label in Italian (only with ATEX 3D)	TL	a	a	b
End Cap Live Circuit Warning Label in German (only with ATEX 3D)	GE	a	a	b
Transmitter Mounting Brackets Options				
Mounting Bracket - Carbon Steel	MB	♦	♦	b
Mounting Bracket - 304 SS	SB	♦	♦	b
Flat Mounting Bracket - Carbon Steel	FB	♦	♦	b
Services/Certificates/Marine Type Approval Options				
User's Manual Paper Copy (Standard, HC, or FF ships accordingly)	UM	♦	♦	
Clean Transmitter for Oxygen or Chlorine Service with Certificate	OX	h	h	
Over-Pressure Leak Test with F3392 Certificate	TP	♦	♦	
Calibration Test Report and Certificate of Conformance (F3399)	F1	♦	♦	b
Certificate of Conformance (F3391)	F3	♦	♦	b
Certificate of Origin (F0195)	F5	♦	♦	
FMEDA (SIL) Certificate	F6	♦	♦	
NACE Certificate (F0198)	F7	♦	♦	
Marine Type Approvals (DNV, ABS, BV & LR)	MT	2	2	
Warranty Options				
Additional Warranty - 1 year	W1	♦	♦	b
Additional Warranty - 2 years	W2	♦	♦	b
Additional Warranty - 3 years	W3	♦	♦	b
Additional Warranty - 4 years	W4	♦	♦	b

Model Selection Guide (34-ST-16-28, cont'd)

Effective Date: January 09, 2006

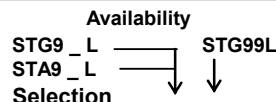


TABLE III - OPTIONS (continued)

Approval Body	Approval Type	Location or Classification			
No hazardous location approvals			9X	♦	♦
Factory Mutual	Explosion Proof	Class I, Div. 1, Groups A,B,C,D	1C	♦	♦
	Dust Ignition Proof	Class II, III Div. 1, Groups E,F,G			
	Non-Incendive	Class I, Div. 2, Groups A,B,C,D			
	Intrinsically Safe	Class I, II, III, Div. 1, Groups A,B,C,D,E,F,G			
CSA	Explosion Proof	Class I, Div. 1, Groups B,C,D	2J	3	b
	Dust Ignition Proof	Class II, III, Div. 1, Groups E,F,G			
	Intrinsically Safe	Class I, II, III, Div. 1, Groups A,B,C,D,E,F,G			
SA (Australia)	Intrinsically Safe	Ex ia IIC T4	4G	♦	♦
	Non-Sparking	Ex n IIC T6 (T4 with SM option)			
ATEX*	Intrinsically Safe, Zone 0/1	<input checked="" type="checkbox"/> II 1 G EEx ia IIC T4, T5, T6	3S	♦	♦
	Flameproof, Zone 1	<input checked="" type="checkbox"/> II 2 G EEx d IIC T5, T6, Enclosure IP 66/67	3D	♦	♦
	Non-Sparking, Zone 2	<input checked="" type="checkbox"/> II 3 G EEx nA, IIC T6 (Honeywell). Enclosure IP 66/67	3N	♦	♦
	Multiple Marking** Int. Safe, Zone 0/1, or Flameproof, Zone 1, or Non-Sparking, Zone 2	Ex II 1 G EEx ia IIC T4, T5, T6 Ex II 2 G EEx d IIC T5, T6 Ex II 3 G EEx nA, IIC T6 (Honeywell) Enclosure IP 66/67	3H	♦	♦
INMETRO (Brazil)	Flameproof, Zone 1	Ex d IIC T5	6D	♦	♦

*See ATEX installation requirements in the ST 3000 User's Manual

**The user must determine the type of protection required for installation of the equipment.

The user shall then check the box [✓] adjacent to the type of protection used on the equipment certification nameplate. Once a type of protection has been checked on the nameplate, subsequently the equipment shall not be reinstalled using any of the other certification types.

TABLE IV

Factory Identification	XXXX	♦	♦
------------------------	------	---	---

RESTRICTIONS

Restriction Letter	Available Only With		Not Available With	
	Table	Selection	Table	Selection
a	III	3D		
b	Select only one option from this group			
h	I	2		
i	III	1C or 2J		
m	III	SM		
n			III	1C, 2J
r			III	TC, ME, 4G, 3S
s			III	FF, ME
u	III	F1D3, C1C3, 1C, 2J		
x	III	FF, SM		
y			III	4G
2			III	FB
3			Key #	STA92L or STA94L
15			III	FF

- Notes:**
- See ST-83 for Published Specials with pricing.
 - See ST-89 and User's Manual for part numbers.
 - See ST-OE-9 for OMS Order Entry Information including TC, manuals, certificates, drawings and SPINS.
 - See ST-OD-1 for tagging, ID, Transmitter Configuration (TC) and calibration including factory default values.
 - To request a quotation for a non-published "special", fax RFQ to Marketing Applications.

ST 3000® is a registered trademark of Honeywell International Inc.

HART* is a trademark of the Hart Communication Foundation.

FOUNDATION™ is a trademark of the Fieldbus Foundation.

Honeywell

Honeywell Process Solutions , Industrial Measurement and Control

Honeywell International Inc.

2500 W. Union Hills Dr.

Phoenix, AZ 85027

©Honeywell International Inc.