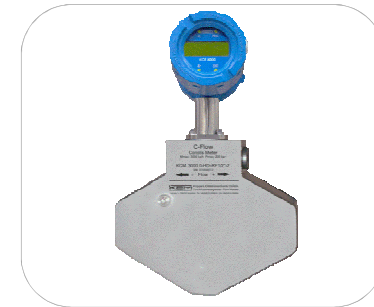
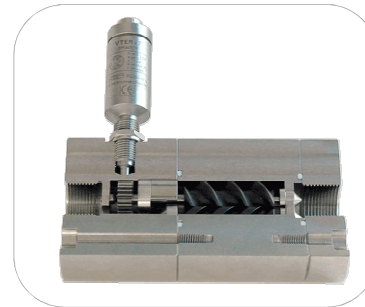


Welcome to Germany
Land of Ideas



Welcome to KEM Küppers Elektromechanik GmbH





Design, Manufacture and Distribution –
YOUR one-stop supplier for Flow Measuring
equipment **WORLDWIDE.**

KEM Küppers Elektromechanik GmbH

has **more than 45 years of experience** in Flow Measuring equipment
combined with innovative and customized product development.
This enables **KEM** Küppers to be your **competent partner** for
various matters of flow measurement.





- **KEM headquarter in Karlsfeld (near Munich)**
- **NEW TECHNOLOGY & TRAINING CENTER**
Management
Sales
Engineering
Application Laboratory
Service



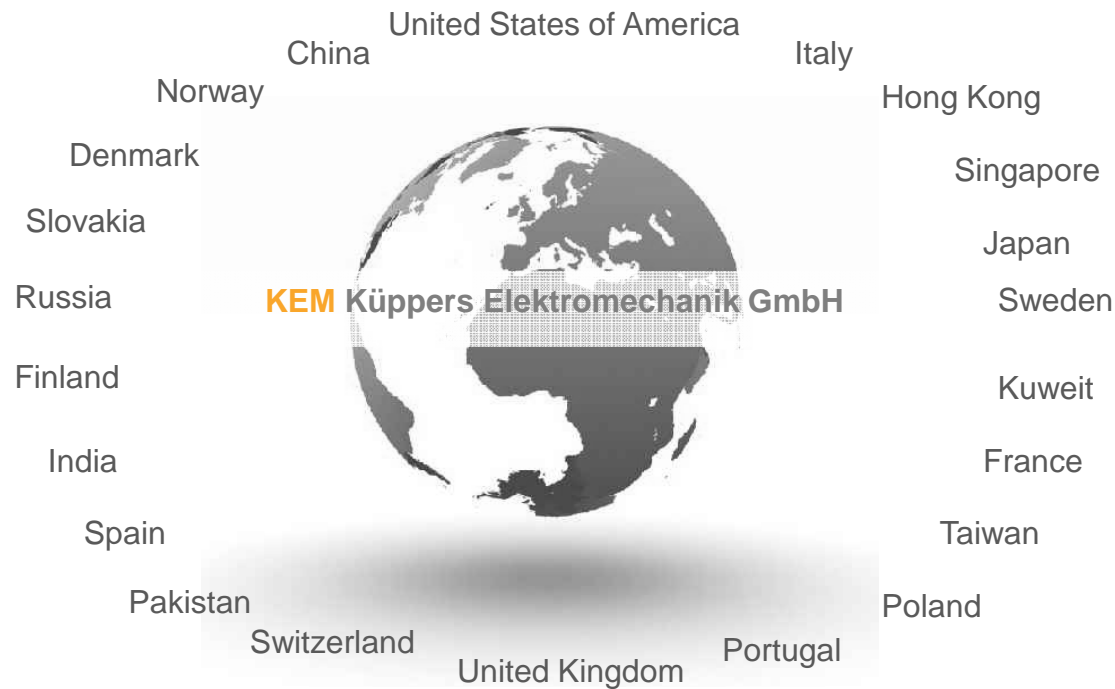
- **KEM subsidiary in Bad Kötzing**
- **NEW PRODUCTION BUILDING**
Production
Calibration
DKD-Calibration
Service



- **Founded by Dipl.-Ing. Karl Küppers in 1965**
- **Employees: 80**
- **Production site: approx. 4.500 m²**
- **Since 2005 KEM has been a member of US TASI group**



KEM4YOU worldwide



■ Production Technologies:

- CNC-Milling
- CNC-Lathing
- Laser-Marking
- Laser-Welding
- 3D-CAD
- FEM –Modeling
- CFD-Simulation
- CNC-Welding



All essential production technologies in house- quality is the base for our success



Range of Flow Meters



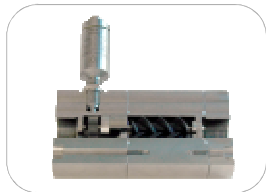
Turbine Flow Meters



Gear Flow Meters



Micro Flow Meters



Helical Flow Meters

Worldwide markets include various industrial sectors such as automotive, oil & gas, hydraulics, polyurethane, steel, food, chemical and petroleum as well as pharmaceutical industries.

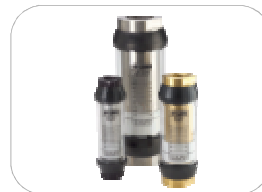
The companies in these sectors USE the KEM flow meters on their test benches, filling lines, batching and paint-spraying systems, etc.



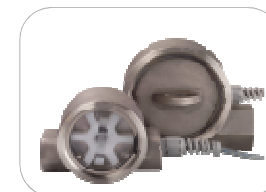
Turbidity Meters



Coriolis Mass Flow Meters



Variable Area Meters



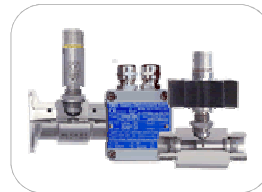
Pelton Flow Meters



Pickups & Amplifiers



**Carrier-Frequency
Pulse Amplifiers**



**Inductive Pickups &
Amplifiers**



**Fiberoptical Amplifier &
Light Pulse Receiver**



**Halleffect Pulse
Amplifier**



Local Converter



**Local display
with 4...20 mA**



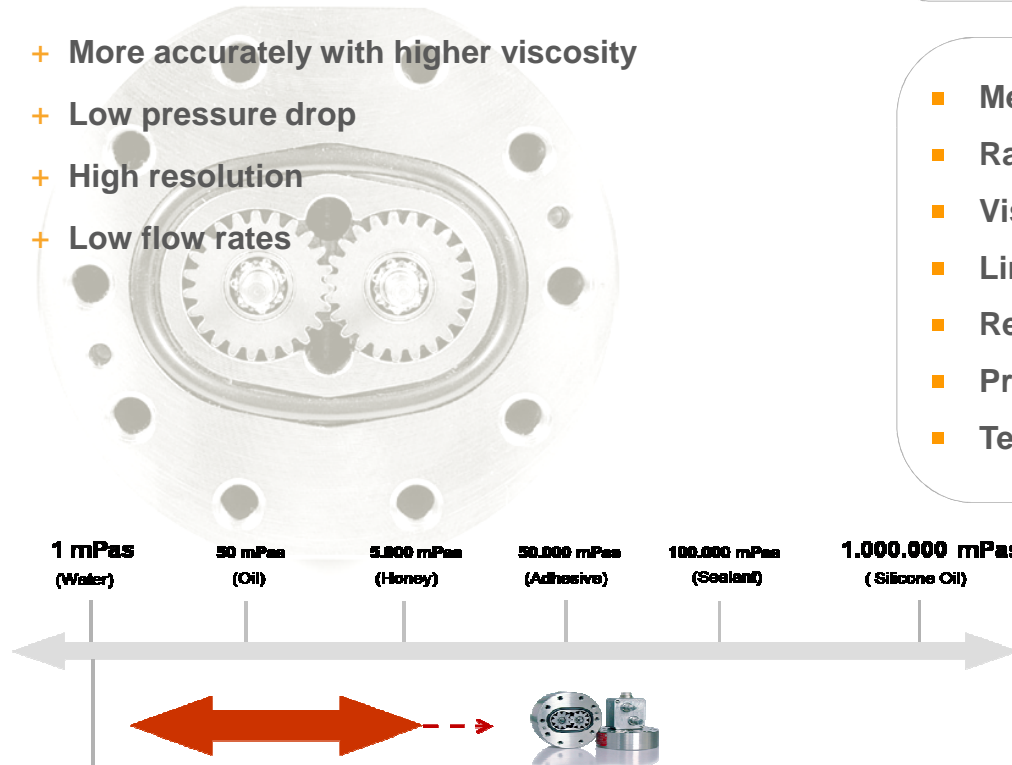
ZHM- Gear Flow Meters

Introduction | Company Profile | Products | Calibration | Markets | Contact

All paints, paint dispense control devices, fuel consumption control devices, polyol and isocyanate, coating wax, glue, PVC, filled and abrasive fluids



- + More accurately with higher viscosity
- + Low pressure drop
- + High resolution
- + Low flow rates



- **Measuring range:** 0.002 up to 1,000 l/min
- **Range:** 1:50 / 1:100
- **Viscosity:** 5 up to 25,000 mm²/s
- **Linearity:** 0.5% of actual flow
- **Repeatability:** 0.1%
- **Pressure:** up to 1,000 bar
- **Temperature:** max +180 C



HM – Turbine Flow Meters

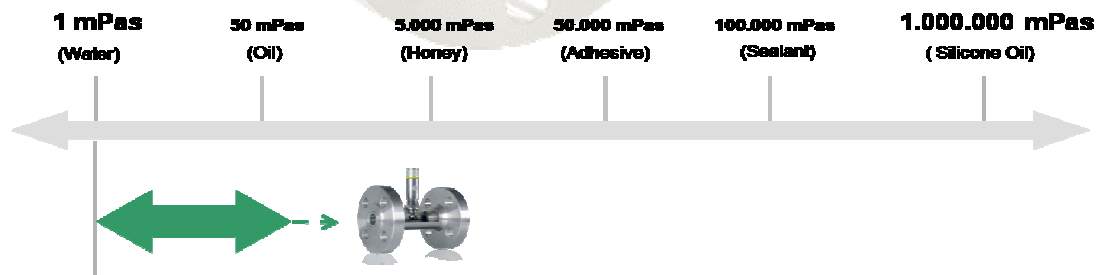
Introduction | Company Profile | Products | Calibration | Markets | Contact

Fuels, light fuel oil, thermal oil, solvents, tap and demineralized water as well as special models for refrigerants, pharmaceutical fluids, cryogenic fluids, liquefied gases and high-pressure applications.

- + Fast response time 5 up to 50 msec.
- + Insensitive to contaminated mediums
- + Wide temperature range
- + Low pressure drop



- **Measuring range:** 0.03 up to 48,000 l/min.
- **Range:** 1:10 / 1:20 / 1:50
- **Viscosity:** 0.1 up to 100 mm²/s
- **Linearity:** 0.15% up to 1.0% of actual flow
- **Repeatability:** 0,1%
- **Pressure:** up to 5,000 bar
- **Temperature:** -270 C up to +350 C



SRZ – Helical Flow Meters

Introduction | Company Profile | Products | Calibration | Markets | Contact

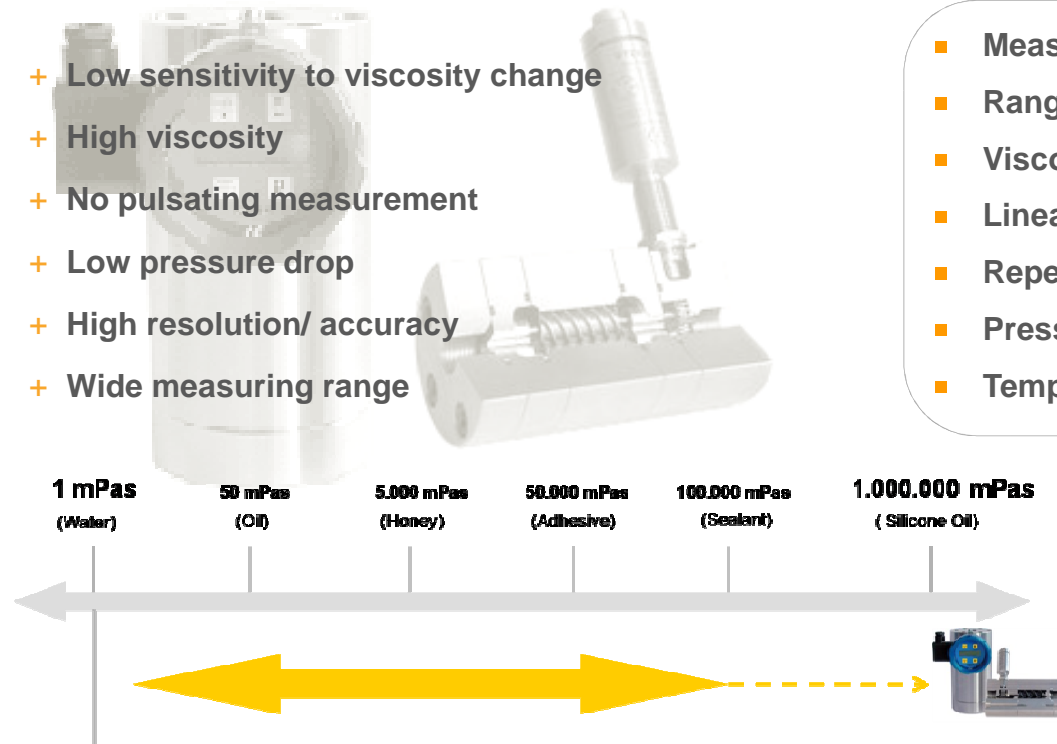
High-viscosity fluids as epoxy resins, PVC and under body sealants, adhesives, anti-flutter materials, polyurethane, polymers, sealants,

As well as Hydraulic applications and applications in Test stands and calibration equipment.



- + Low sensitivity to viscosity change
- + High viscosity
- + No pulsating measurement
- + Low pressure drop
- + High resolution/ accuracy
- + Wide measuring range

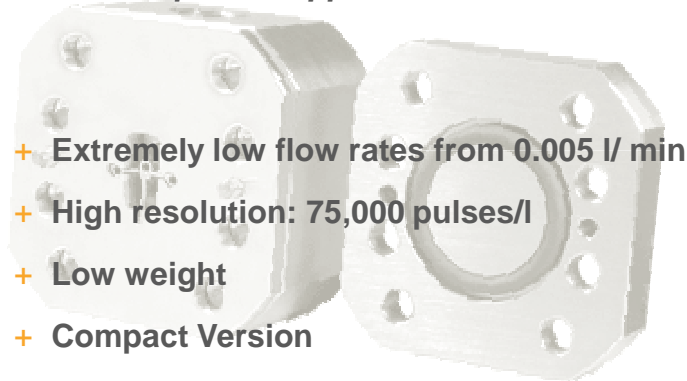
- **Measuring range:** 0.01 up to 1,000 l/min
- **Range:** 1:100 / 1:400
- **Viscosity:** up to 10^6 mm²/s
- **Linearity:** 0.25% of actual flow
- **Repeatability:** 0,1%
- **Pressure:** max. 400 bar
- **Temperature:** max +150 C



LFM – Micro Flow Meters

Introduction | Company Profile | Products | Calibration | Markets | Contact

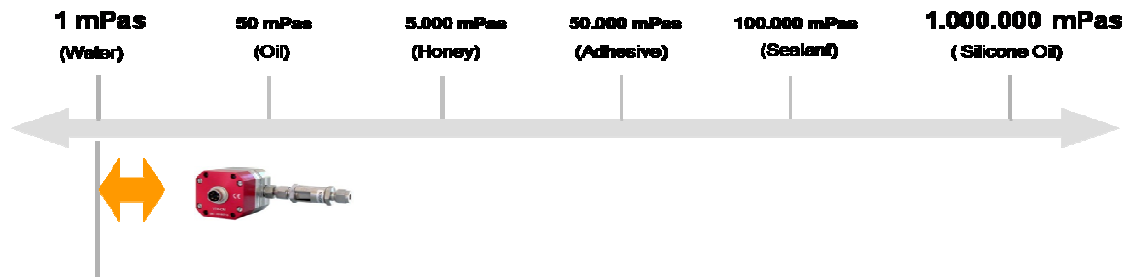
Additives, pharmaceuticals, aromatic substances/ perfumes, liquefied gases, demineralized water, fluid food products, 2- and 3-component applications.



- + Extremely low flow rates from 0.005 l/ min
- + High resolution: 75,000 pulses/l
- + Low weight
- + Compact Version



- **Measuring range:** 0.005 up to 0.25 l/min
- **Range:** 1:50
- **Viscosity:** 0.6 up to 5 mm²/s
- **Linearity:** 2.5% of actual flow
- **Pressure:** max. 100 bar
- **Temperature:** -60 up to +120 C



KCM – Mass Flow Meters

Introduction | Company Profile | Products | Calibration | Markets | Contact

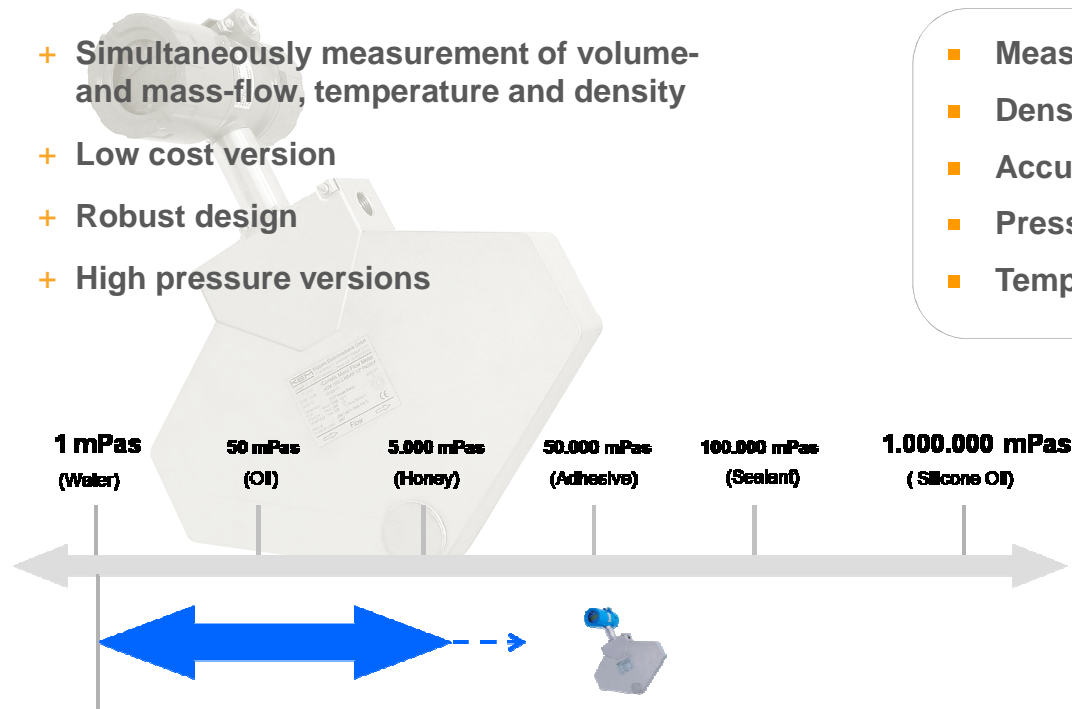
All kinds of fluids, e.g. PU-components, paints, diesel, fuel, heavy oil and chemicals.

Gases of high density like CNG, LNG, LPG



- + Simultaneously measurement of volume- and mass-flow, temperature and density
- + Low cost version
- + Robust design
- + High pressure versions

- **Measuring range:** 4.5 kg/h up to 60,000 kg/h
- **Density:** 800 kg/m³ up to 4,500 kg/m³
- **Accuracy:** 0.5% of actual mass flow
- **Pressure:** up to 350 bar
- **Temperature:** -20 C up to +125 C



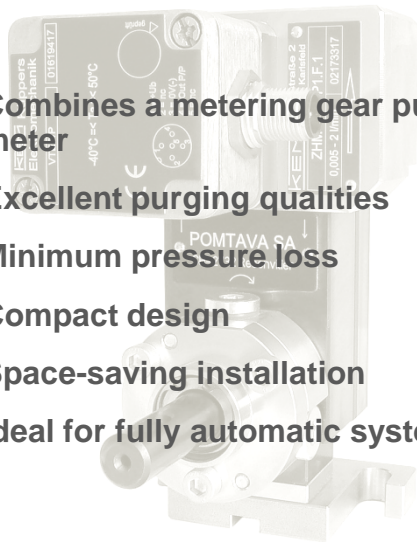
DCD – Dispense Control Device

Introduction | Company Profile | Products | Calibration | Markets | Contact

Paints, adhesives and PU components.

The Dispense Control Device (DCD) was designed in co-operation with the Swiss pump manufacturer POMTAVA.

- + Combines a metering gear pump with flow meter
- + Excellent purging qualities
- + Minimum pressure loss
- + Compact design
- + Space-saving installation
- + Ideal for fully automatic systems



- **Dispensing range:** 0.005 up to 2 l/min
- **Rotation speed:** 10 up to 200 U/min
- **Viscosity:** 1 up to 10,000 mm²/s
- **Pulse rate:** max. 26,500 pulses/l
- **Pressure:** max 100 bar
- **Driving shaft:** DN 12 mm



KPS – Turbidity Meter

Introduction | Company Profile | Products | Calibration | Markets | Contact

Milk, skim, whole, evap. milk, whip cream, ice cream, yogurt, fluid food, chemical and pharmaceutical fluids



- + Product monitoring
- + CIP monitoring
- + Detect filter breaks
- + Monitor waste streams
- + 3A approval



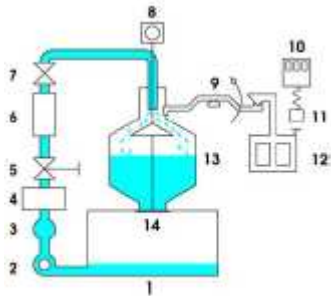
- **Measuring range:** 150 up to 4,000 NTU
- **Linearity:** 0.2% of span
- **Pressure:** max. 25 bar
- **Temperature:** 0 up to +100 C
- **Output:** 4 ... 20 mA

Calibration of Flow Meters

Calibration is the method to determine precise and usable information on the accuracy of a measuring device. Being manufacturers of flow meters, we supply individual calibration records for all flow meters. Records are also available for different viscosities and fluids.

Our calibration records are accorded to international standards.

We calibrate flow meters on our gravimetric or one of our volumetric calibration rigs. The gravimetric rig is the heart of our calibration laboratory. This laboratory is affiliated to the DKD, Deutscher Kalibrierdienst (German Calibration Service). It was approved of by the PTB, Physikalisch Technische Bundesanstalt, according to DIN EN ISO/IEC 17025 : 2005. The PTB is the Federal Institute of Physics and Metrology. Equivalent institution in the USA: NIST, National Institute of Standards and Technology.





Automotive



Petrochemicals
Oil & Gas



Hydraulics



Fuel Consumption



KEM provides a wide range of flow meters
for different markets and applications



Process Engineering



Energy



Polyurethane



Pharma & Food



KEM & TASI Global Customers

Introduction | Company Profile | Products | Calibration | Markets | Contact



KEM - Your Global Partner for Flow Measurement & Control



www.kem-kueppers.com
info@kem-kueppers.com

DESIGN | PRODUCTION | DISTRIBUTION



KEM4YOU

Ideal Solutions for all Flow Metering Applications!

