



SERV' INSTRUMENTATION



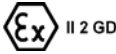

Mesure et Contrôle vos fluides
 ZI Broteau Nord
 69540 Irigny
 TEL 33 (0)4 78 51 47 50
 FAX 33 (0)4 78 51 59 96
<http://www.servinstrumentation.fr>



Series 8800MP

Master-Touch™ Series 8800MP flowmeters are insertion style instruments with all electronics mounted integrally on the sensor probe assembly. The standard configuration includes a 2-line, 16-character display and LightWIRE™ infrared communications capability. All input power and signal output connections are accessible through the double-sided enclosure. A variety of installation options are available, including ball valve retractor assemblies, tube to pipe compression fittings, and probe mounted flanges. Input power is supplied to the remote electronics. Consult factory for details.

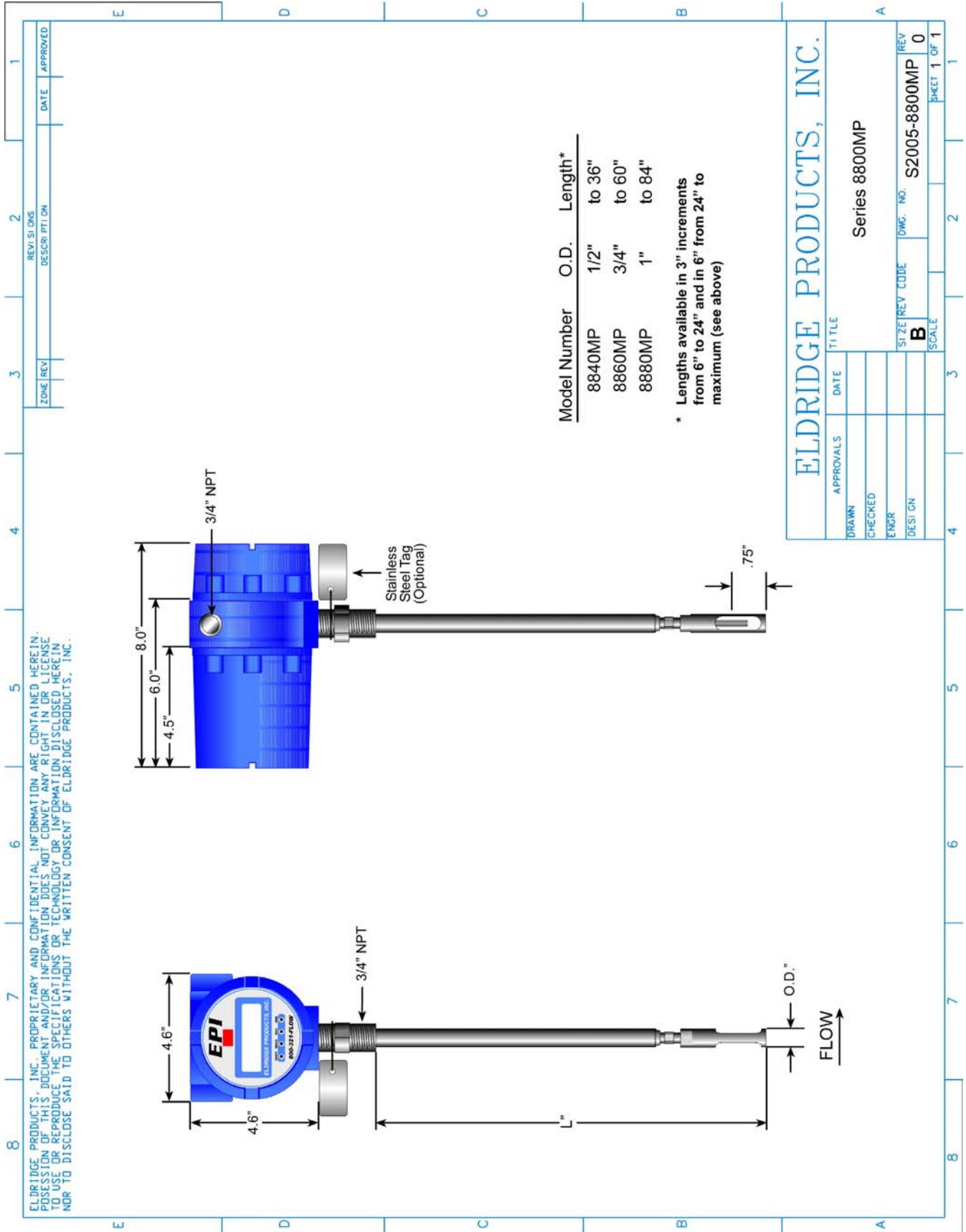
Specifications

Linear signal output	0–5 VDC & 4–20 mA
Signal Interface	RS232 & RS485
Accuracy, including linearity (Ref.: 21°C)*	±[1% of Reading + (.5% + .02%/°C of Full Scale)]
Repeatability	±0.2% of Full Scale
Sensor response time	1 second
Turn down ratio	100:1 minimum
Electronics temperature range	0°–50°C (32°–122°F), extended temperature optional
Gas temperature range*	–40°–200°C (–40°–392°F), extended range available
Gas pressure effect	Negligible over ± 20% of absolute calibration pressure
Pressure rating maximum	500 PSI Std., > 500 PSI special
Input power requirement	24VDC @ 250mA 115 VAC 50/60 Hz optional 230 VAC 50/60 Hz optional
Flow Transmitter power requirements	5 watts maximum
Wetted materials	316 Stainless Steel (Hastelloy and Monel optional)
Standard temperature & pressure (STP)	70°F & 29.92" Hg (Air .075 lb./cubic foot)
NIST traceable calibration	Standard
Flow Transmitter enclosure:	
Class I Division 1 Groups B, C and D; Class II E, F and G; Class III; Type 4X, 7; Ex d IIC; AEx d IIC, IP66; EEx d IIC, IP66; T2 (consult factory for T3 or T4).	
Certified to US requirements; Certified to Canadian requirements	
Certified to European ATEX requirements	  

* The accuracy specification applies to the instrument only. EPI is not responsible for measurement errors due to flow profile irregularities caused by installation piping configurations, corrosion on inner pipe surfaces, valve placement, etc.

**SSM option required for 100°–200°C (212°–392°F)

Specifications subject to change without notice.



ELDRIDGE PRODUCTS, INC. PROPRIETARY AND CONFIDENTIAL INFORMATION ARE CONTAINED HEREIN. POSSESSION OF THIS DOCUMENT AND/OR INFORMATION DOES NOT CONVEY ANY RIGHT IN OR LICENSE TO USE OR REPRODUCE THE SPECIFICATIONS OR TECHNOLOGY OR INFORMATION DISCLOSED HEREIN NOR TO DISCLOSE SAID TO OTHERS WITHOUT THE WRITTEN CONSENT OF ELDRIDGE PRODUCTS, INC.

Model Number	O.D.	Length*
8840MP	1/2"	to 36"
8860MP	3/4"	to 60"
8880MP	1"	to 84"

* Lengths available in 3" increments from 6" to 24" and in 6" from 24" to maximum (see above)

APPROVALS		TITLE	
		DATE	
DRAWN		Series 8800MP	
CHECKED			
ENGR			
DESIGN		SIZE REV CODE	DWG. NO.
		B	S2005-8800MP
		SCALE	REV
			0
		SHEET 1 OF 1	