

01:01 4882/10001 : 480
 228/12572-3-PE : 483
 22882572-3-PE : 483

MESSRS
 YAMATAKE EUROPE
 BOSDELLESTRAAT, 120/2
 B1933 ZAVANTEM-STERREBEEK B
 F.A.O. : MR. REGIS HOULLIER
 C.C. : FAX. 0033/3/22548329

BID. N. L 2041111 DATE 20/07/2004 YOUR REF. E-MAIL DATE 19/07/2004

DELIVERY TERMS	FOT OUR ADDRESS	PAYMENT	TO BE AGREED
SHIPPING	AT YOUR CHARGE	CURRENCY	EUR.
DELIVERY	EX OUR WORKS	BANK	
PACKING	COMMERCIAL TYPE INCLUDED	AGENT	
COURIER		DELIVERY DATE	EX-STOCK SUBJECT TO PRIOR

ITEM	PRODUCT	DESCRIPTION	UM	Q.TY	UNIT PRICE	DISCOUNT
------	---------	-------------	----	------	------------	----------

1	29.30.0001	THREE VALVE MANIFOLD MOD. C-302-DDB-S-T MATERIAL ST.ST. 316 PTFE SEALS CONNECTIONS IN / OUT 1/2"NPT-F VENTS 1/4"NPT-F + PLUG CL 54 MM RATING 6000 PSI	NR	10,00	EUR	93,50
---	------------	--	----	-------	-----	-------

ITEM 1

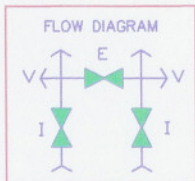
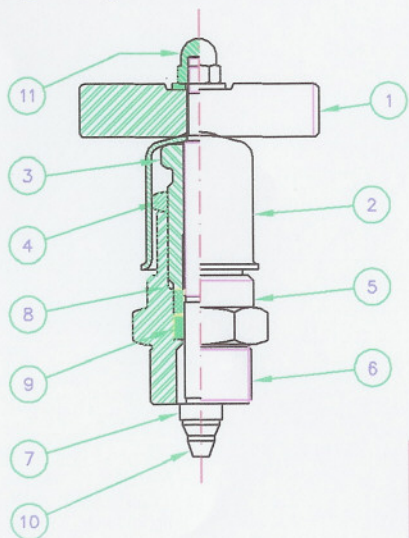
 MAIN CHARACTERISTIC AS PER ATTACHED
 TECHNICAL DRAWING

2 TECHNICAL NOTES:
 3 VALVE MANIFOLDS HAVE BEEN QUOTED
 WITH STANDARD ~~PROCESS~~ CONNECTION
 1/2"NPT-F BOTH INLET AND OUTLET.
 TO INSTALL MANIFOLDS "DIRECTLY" TO
 YOUR DPT WE CAN PROPOSE SOLUTIONS
 AS FOLLOWS:

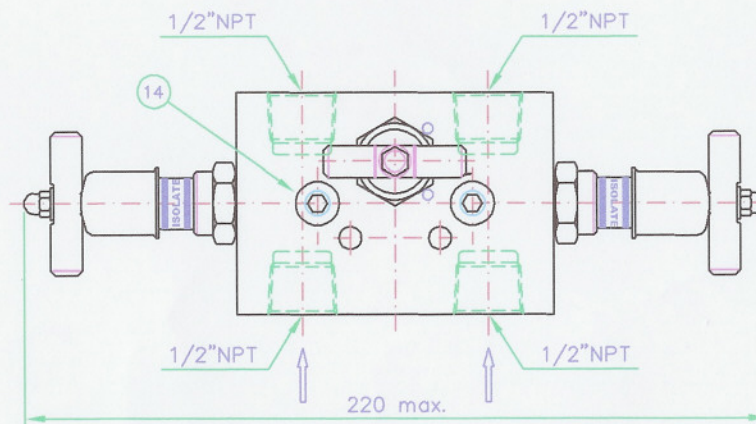
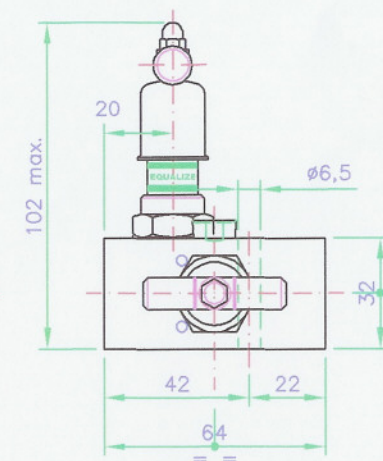
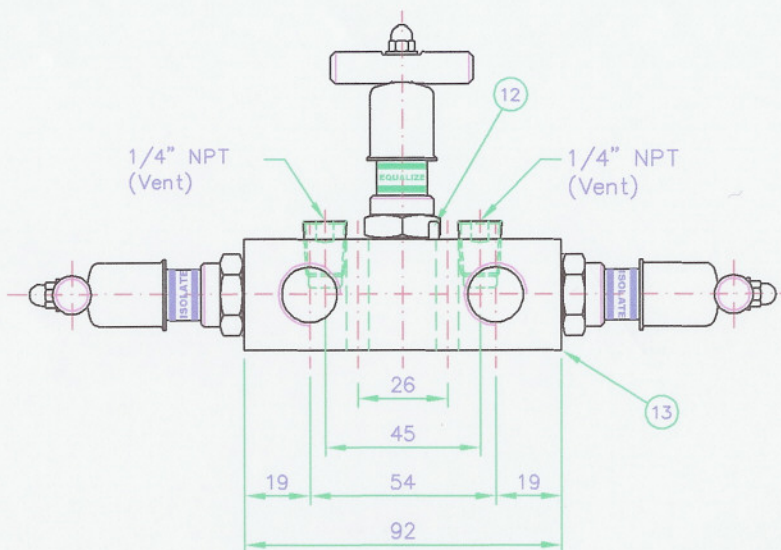


Item Nr.	Description	Q.ty	Materials *
1	TEE-BAR	3	St.St.
2	DUST CUP	3	Plastic/St.St.
3	COMPRESSION NUT	3	St.St.
4	LOCKING NUT	3	St.St.
5	BONNET ASS.LY	3	St.St. 316
6	BONNET BODY	3	St.St. 316
7	STEM	3	St.St. 316
8	FOLLOWER	3	St.St. 316
9	PACKING	3	PTFE/Graphite
10	TRIM	3	St.St. 316
11	TEE-BAR SCREW	3	St.St.
12	LOCKING PIN	3	St.St.
13	BODY	1	St.St. 316/C. St.
14	PLUG	2	St.St. 316

* Different materials on application
 Δ Rating : 6.000 PSI Standard




Dimensioni in mm
 All dimensions are in mm.



AL

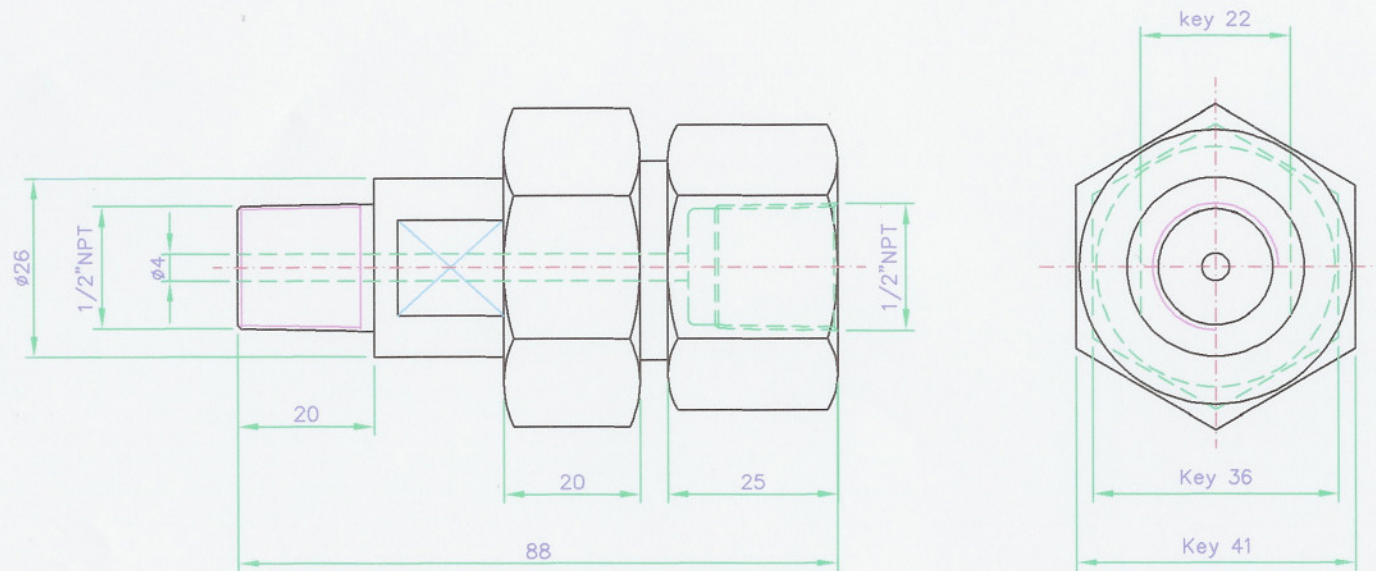
INDRA SRL

20013 Mogenta (MI) - Italy - Via Novara, 10/B
 Tel. 02 97.29.86.83 r.a. - Fax 02 97.29.18.55
 E-mail: indra@indra.it - http://www.indra.it


TITOLO:	THREE VALVE REMOTE	DISEGNO:	C-302-DBB
TITILE:		DWG.:	
MODELLO:	C-302-DBB	REV:	00
MODEL:		DATE:	20-10-03
CODICE:		NOTE/NOTES:	
CODE:			
SCALA:	N.A.	FOGLIO:	1/1
SCALE:		SHEET:	CL
DISEGNATO DA:	D. Sar	CONTROLLATO DA:	A. Cer
DRAWN BY:		CONTROLLED BY:	R.I.
DATA:	13-05-2003	DATE:	13-05-2003
DATE:		DATE:	

I disegni possono essere soggetti a modifiche senza alcun preavviso. E' vietata la riproduzione integrale o parziale del presente documento senza esplicita autorizzazione scritta da parte di INDRA SRL.
 Drawings maybe subject to changes without previous notice. This document is property of INDRA SRL. No exploitation or release of any text contained herein

This drawing is just a sample -
 We will supply Male-Male adapters -



Ac

INDRA SRL 20013 Magenta (MI) - Italy - Via Novara, 10/B Tel.02 97.29.86.63 r.a. - Fax 02 97.29.18.55 E-mail: indra@indra.it - http://www.indra.it		TITOLO: THREE PIECES ADAPTER 1/2"NPT-M/F MODELLO: MODEL: CODICE: CODE:		DISEGNO: SWADAPTER DWG.: REV.: 01 DATA: 28-04-04	
		SCALA: 1:1 FOGLIO: 1/1 SHEET: SERIE: CL SERIES:		NOTE/NOTES: 	
DISEGNATO DA: D. Sar DRAWN BY:		CONTROLLATO DA: A. Cer CONTROLLED BY:		APPROVATO DA: R.I. APPROVED BY:	
DATA: 18-11-2003 DATE:		DATA: 18-11-2003 DATE:		DATA: 18-11-2003 DATE:	
I disegni possono essere soggetti a modifiche senza alcun preavviso. E' vietata la riproduzione integrale o parziale del presente documento senza esplicita autorizzazione scritta da parte di INDRA SRL. Drawings maybe subject to changes without previous notice. This document is property of INDRA SRL.No exploitation or release of any text contained herein or relating to this document is permitted in any form without the written consent of INDRA SRL.					