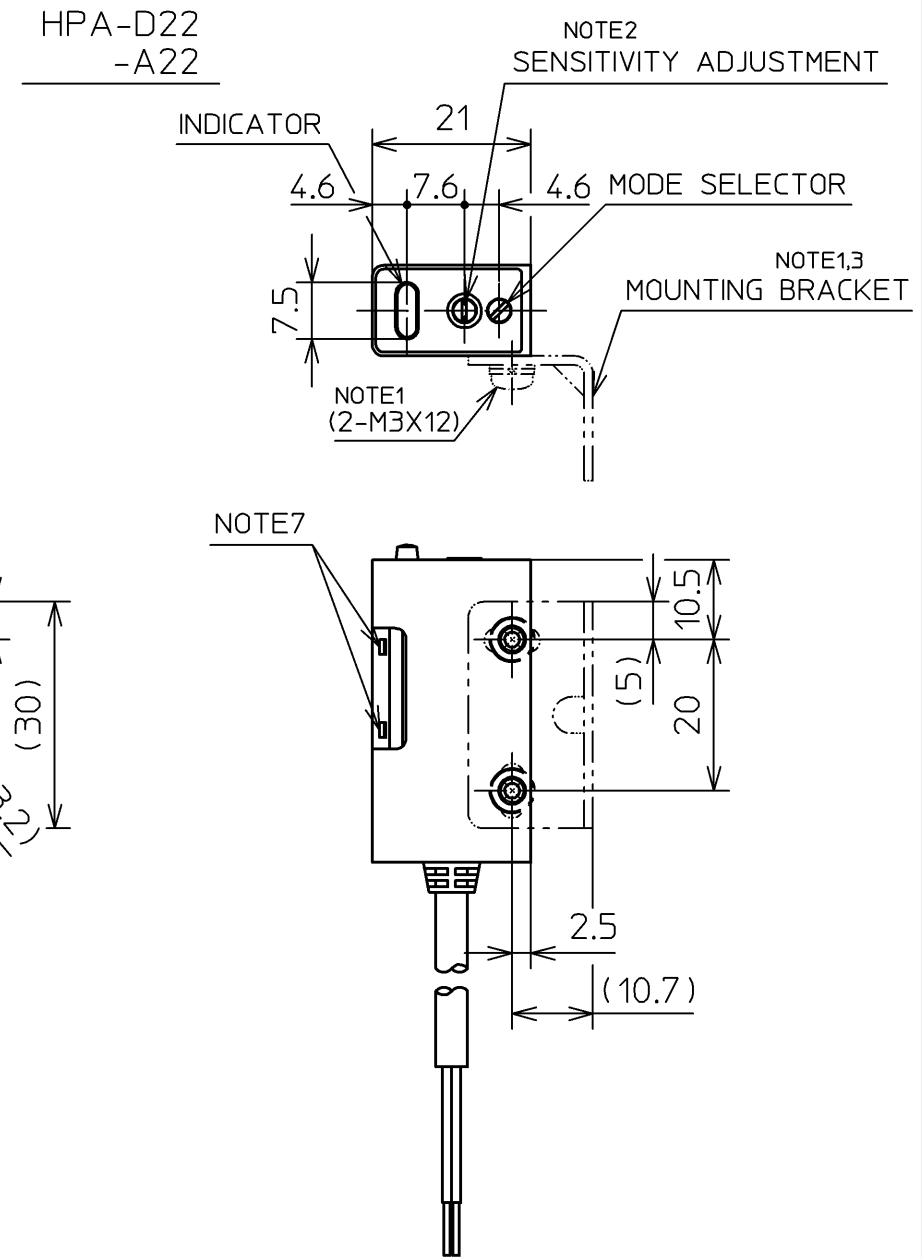
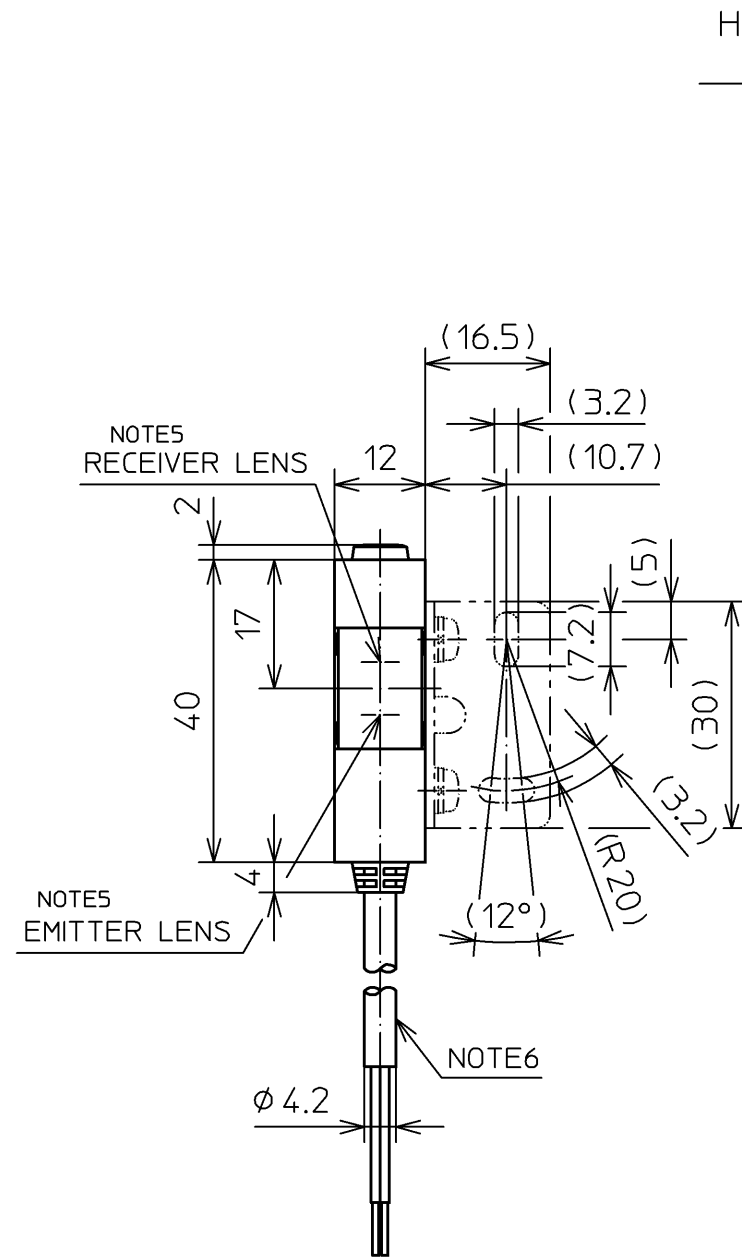
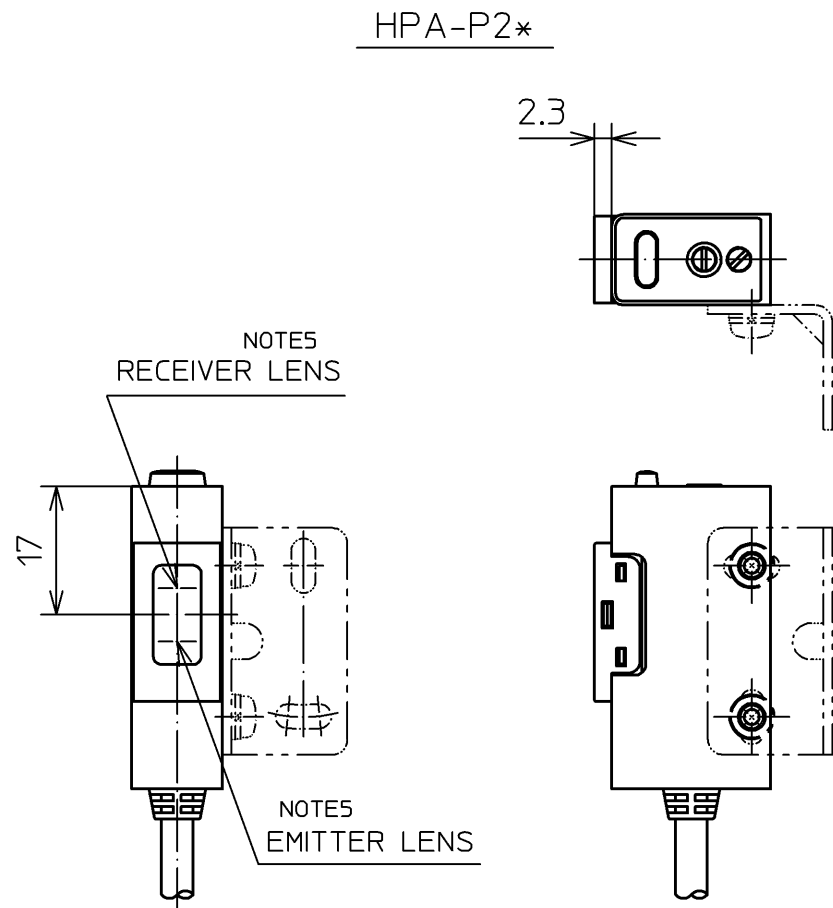


	THROUGH SCAN		POLARIZED RETROREFLECTIVE SCAN	DIFFUSE SCAN LIGHT SOURCE : RED	DIFFUSE SCAN LIGHT SOURCE : INFRARED	SELF-DIAGNOSIS/ SET MODE	OUTPUT
	SET	EMITTER	RECEIVER				
	HPA-T24	HPA-E23	HPA-R24	HPA-P24	—	PROVIDED	OPEN COLLECTOR OF
	HPA-T22	HPA-E21	HPA-R22	HPA-P22	HPA-D22	NOT PROVIDED	PNP TRANSISTOR

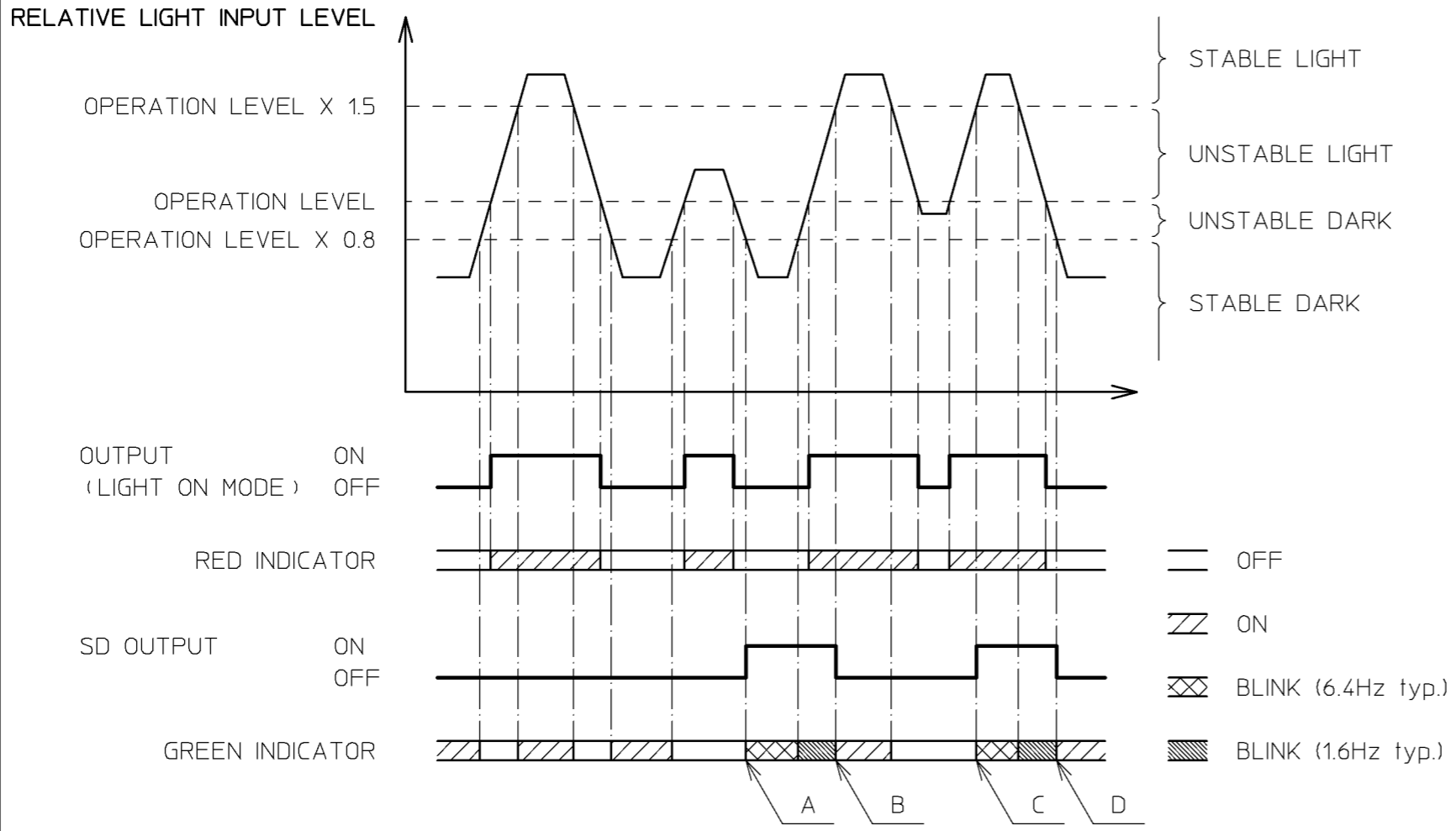


- 7 ATTACH THE OPTIONAL ACCESSORY HERE. (HPA-U**)
- 6 CABLE : OIL RESIST 0.2mm²
COLOR : GRAY (EXCEPT THROUGH SCAN EMITTER)
: BLACK (THROUGH SCAN EMITTER ONLY)
- 5 LENS DIAMETER : φ8
- 4 MATERIAL
PHOTOELECTRIC SWITCH
CASE : DENATURED POLYSULFONE RESIN/BLACK $\triangle 2, \triangle 3$
LENS : POLYARYLATE RESIN (THROUGH, DIFFUSE SCAN)
: PMMA RESIN (POLARIZED RETRO. SCAN)
MOUNTING BRACKET : Al t1.2
- 3 MOUNTING BRACKET CAN BE USED ON BOTH SIDE.
- 2 SCREW DRIVER FOR SENSITIVITY ADJUSTMENT IS INCLUDED.
- NOTE 1 MOUNTING BRACKET AND SCREWS ARE INCLUDED.

05	JEO 01-2110	2-14 '05	K.M.	S.M
04	JEO 99-2064	5.13 '99	Y.N.	T.N
03	JEO 96-2229	10.18 '96	T.K.	T.N
02	JEO 95-2280	10.27 '95	T.K.	T.N
01	JEO 94-2183	7.26 '94	M.T.	T.N
改番 REV.	来歴 RECORD	: 日付 DATE	担当 BY	検閲 APPD.

作成DR. T.Koike 2-22-'94	検図CHK. T.Nakao 3-1-'94	認可APPD S.Nanaka 3-1-'94	日付DATE 3-3-'94	形番 MODEL HPA SERIES	名称 NAME PHOTOELECTRIC SWITCH	図番 NO. AD41153E	改番REV. 05	1/4
尺度SCALE 1:1		記入のない公差TOL. UNLESS NOTED ±0.8 ±2°						

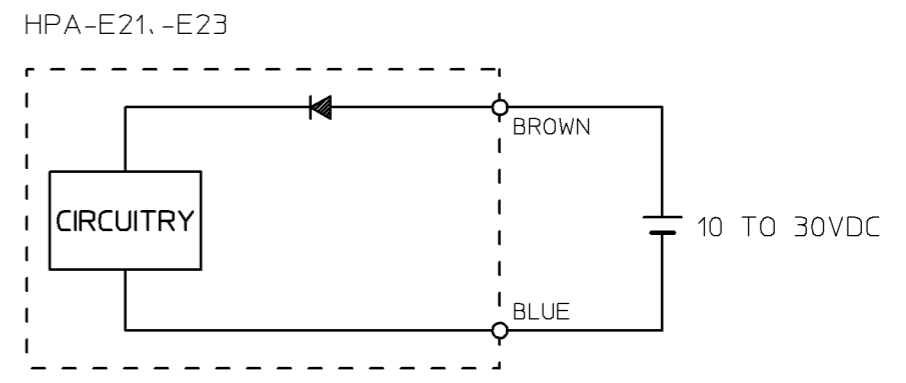
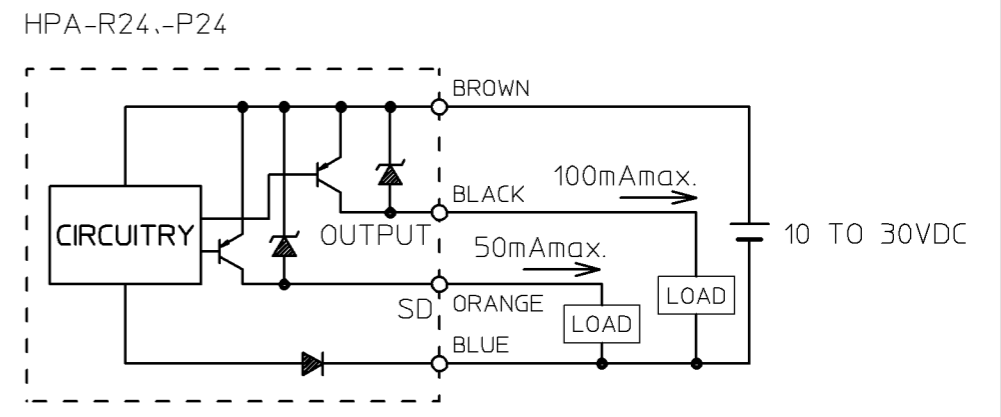
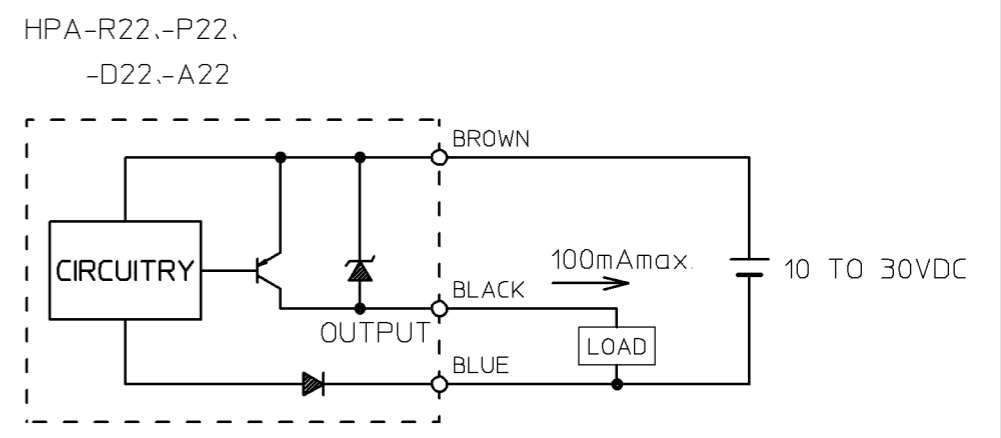
SR. No.



- A INPUT LEVEL CHANGES STABLE DARK → UNSTABLE LIGHT → STABLE DARK, GREEN INDICATOR TURNS TO SELF-DIAGNOSIS INDICATOR (BLINKING).
- B INPUT LEVEL INCREASES FROM STATE 'A' TO STABLE LIGHT, GREEN INDICATOR TURNS TO STABLE INDICATOR (ON OR OFF).
- C INPUT LEVEL CHANGES STABLE LIGHT → UNSTABLE DARK → STABLE LIGHT, GREEN INDICATOR TURNS TO SELF-DIAGNOSIS INDICATOR (BLINKING).
- D INPUT LEVEL DECREASES FROM STATE 'C' TO STABLE DARK, GREEN INDICATOR TURNS TO STABLE INDICATOR (ON OR OFF).

Fig. 1 OPERATION OF OUTPUT AND INDICATOR

CONNECTION



05	~	~	~
04	~	~	~
改番 REV.	来歴 RECORD	日付 DATE	担当 BY

作成DR T.Koike 2-22-'94	検図CHK T.Nakao 3-1-'94	認可APPD S.Nanaka 3-1-'94	日付DATE 3-3-'94	尺度SCALE ~	記入のない公差TOL UNLESS NOTED ~
形番 MODEL		HPA SERIES			
名称 NAME		PHOTOELECTRIC SWITCH			
図番 NO.		AD41153E		改番REV. 05	4

SP.NO.

Yamatake Corporation

製品仕様書
SPECIFICATIONS

“RESTRICTIONS ON USE”

This product has been designed, developed and manufactured for general-purpose application in machinery and equipment.

Accordingly, when used in applications outlined below, special care should be taken to implement a fail-safe and/or redundant design concept as well as a periodic maintenance program.

- Safety devices for plant worker protection
- Start/stop control devices for transportation and material handling machines
- Aeronautical/aerospace machines
- Control devices for nuclear reactors

Never use this product in applications where human safety may be put at risk.

1	00	00	First issue	12-2-02	Harada	Miura
頁	改番	改番	来歴	日付	担当	検閲
	REV.	REV.	RECORD	DATE	BY	APPD.