

SP. No.

Yamatake Corporation

製品仕様書  
SPECIFICATIONS

CATALOG LISTING LDVS-5 1 2 3 4 5

1 NUMBER OF PLUNGER

| CODE | NUMBER OF PLUNGER |
|------|-------------------|
| 2    | 2                 |
| 3    | 3                 |
| 4    | 4                 |

2 TYPE OF ACTUATOR

| CODE | TYPE OF PLUNGER |
|------|-----------------|
| 0    | BEVEL           |
| 1    | ROLLER          |

3 LOCATION OF CONDUIT HOLES, FURNISHED

| CODE | LOCATION OF CONDUIT HOLES                                  | CONDUIT PARTS   |
|------|--|---|
| 4    | MOUNTING SURFACE (2)<br>AND<br>SIDE SUEFACE OF HOUSING (2) | ASSEMBLED : 2 O-RINGS (G30)<br>2 EACH PLUGS AND SEALS IN<br>MOUNTING SURFACE<br>2 PLUGS IN SIDE SURFACE<br>OF HOUSING |

4 SCRAPER MATERIAL

| CODE | MATERIAL        |
|------|-----------------|
| S    | NITRILE RUBBER  |
| V    | FLUORINE RUBBER |

5 CONTACT MATERIAL AND ELECTRICAL RATINGS  
(STANDARD AND IEC ELECTRICAL RATINGS ARE BOTH INDICATED ON THE SWITCH BODY.)

| CODE | CONTACT MATERIAL | ELECTRICAL RATING                 | EN60947-5-1, IEC 60947-5-1                                 |
|------|------------------|-----------------------------------|--|
| ~    | SILVER           | Y15<br>5A-AC250V                  | Y226<br>1.5A-AC250V AC-15<br>0.5A-DC 30V DC-12 <b>△CE</b>  |
| K    | GOLD ALLOY       | Y93<br>0.1A-AC125V<br>0.1A-DC 30V | Y93<br>0.1A-AC125 V AC-12<br>0.1A-DC 30 V DC-12 <b>△CE</b> |

6 04  
5 04  
4 01  
3 00  
2 04  
頁改番  
PAGE REV.

|            |              |              |           |             |                                |             |                          |                           |
|------------|--------------|--------------|-----------|-------------|--------------------------------|-------------|--------------------------|---------------------------|
| 04         | EC006-0319   | 4,18,'06     | SAKIYAMA  | TOMITA      | 作成DR.<br>UEDA<br>10.21, '99    |             | 尺度 SCALE                 | 記入のない公差 TOL. UNLESS NOTED |
| 03         | JE005-1312   | 6,22,'05     | KANAI     | TOMITA      | 検図CHK.<br>K.ABE<br>10.21, '99  | 形番<br>MODEL | LDVS-5*****              |                           |
| 02         | JE004-1328   | 9,10,'04     | TATSUHARA | TOMITA      | 認可APPD<br>MURATA<br>10.22, '99 | 名称<br>NAME  | MULTIPLE<br>LIMIT SWITCH |                           |
| 01         | JE003-1240   | 2,19,'03     | TATSUHARA | TOMITA      | 日付DATE<br>10.22, '99           | 図番<br>NO.   | AD53197E                 | 改番REV.<br>04 / 1 / 6      |
| 改番<br>REV. | 来歴<br>RECORD | : 日付<br>DATE | 担当<br>BY  | 検閲<br>APPD. |                                |             |                          |                           |

SP. No.

# Yamatake Corporation

## 製品仕様書 SPECIFICATIONS

### 1. STANDARDS

- Conform to; JIS C 8201-5-1  $\triangle$  IEC 60947-5-1  $\triangle$
- Approved by; EN60947-5-1(TÜV)

### 2. STRUCTURE

- Type of Contact; C (SPDT)  $\triangle$
- Shape of Terminal; Screw (M3 pan head screw with lock washer)
- Shape of Contact; Silver ; Rivet  
Gold Alloy; Cross point
- Protective Structure; IP67 (IEC 60529)  $\triangle$
- Environment pollution degree; Degree 3 (EN60947-5-1)
- Protection class; Class I (IEC 60536)  $\triangle$

### 3. ELECTRICAL CHARACTERISTICS

- $\triangle$  Rated operational voltages (Ue), Utilization category, Rated operational current (Ie) and Conventional free air thermal current (Ith)

| Point of contact material | Silver contacts                |                      | Gold plated contacts           |   |
|---------------------------|--------------------------------|----------------------|--------------------------------|---|
|                           | Rated operational voltage (Ue) | Utilization category | Rated operational current (Ie) | Conventional free air thermal current (Ith) |
|                           | 250VAC                         | DC-12                | 0.5A                           | 5A  |
|                           | 30VDC                          | DC-12                | 0.1A                           | 0.5A  |
|                           | 250VAC                         | AC-12                | 1.5A                           | 5A  |
|                           | 30VDC                          | DC-12                | 0.1A                           | 0.5A  |

- The value of therated frequency; 45~65Hz and "dc"
- Rated insulation voltage (Ui); 250 VAC

- $\triangle$  Note 1. Dielectric test voltage between each terminal and the enclosure: **1500VAC** (50 to 60Hz, for 5 seconds, leak current 1mA)

- $\triangle$  Dielectric test voltage between the open contacts: **600VAC** (50 to 60Hz, for 1 minute, leak current 1mA)

- Rated impulse withstand voltage (Uimp); 4000V

| Point of contact material | Contact Resistance  | Minimum Contact Operating Current |
|---------------------------|---|-----------------------------------|
| Silver contacts           | 50 mΩ max. (initial) Measured by the voltage drop method at 6 to 8 VDC 1 A.   | 24V-10mA, 12V-20mA                |
| Gold plated contacts      | 100 mΩ max. (initial) Measured by the voltage drop method at 6 to 8 VDC 0.1A. | 5V-10mA                           |

- Short circuit protective device; Fast acting fuse 10A (Bussmann ABC10 or equivalent)
- Conditional short-circuit current; 100A (at resistive load)
- Switching overvoltage; Category III (IEC 60204-1)  $\triangle$
- Conditional short-circuit current;

|                                 |             |                          |                                |
|---------------------------------|-------------|--------------------------|--------------------------------|
| 作成DR.<br>UEDA<br>10.21, '99     |             | 尺度 SCALE<br>UN           | 記入のない公差 TOL. UNLESS NOTED<br>~ |
| 検図CHK.<br>K.ABE<br>10.21, '99   | 形番<br>MODEL | LDVS-5*****              |                                |
| 認可APPD.<br>MURATA<br>10.22, '99 | 名称<br>NAME  | MULTIPLE<br>LIMIT SWITCH |                                |
| 日付DATE<br>10.22, '99            | 図番<br>NO.   | AD53197E                 | 改番REV.<br>04 / 2 / 6           |

|           |             |            |              |              |          |             |
|-----------|-------------|------------|--------------|--------------|----------|-------------|
| 04        | CHANGED     | 4,18,'06   | SAKIYAMA     | TOMITA       |          |             |
| 01        | IEC529 etc. | 2,19,'03   | TATSUHARA    | TOMITA       |          |             |
| 頁<br>PAGE | 改番<br>REV.  | 改番<br>REV. | 来歴<br>RECORD | : 日付<br>DATE | 担当<br>BY | 検閲<br>APPD. |

S.P. No.

Yamatake Corporation

製品仕様書  
SPECIFICATIONS

## 4. MECHANICAL CHARACTERISTICS (Value at 25° dog angle)

- Actuator Strength; Withstand 5 times O.F. in the operating direction for 1 minute.
- Terminal Strength; Withstand 0.6N·m tightening torque applied for 1 minute.
- Shock;
  - Silver Contacts; 600 m/s<sup>2</sup>
  - Gold Alloy Contacts; 400 m/s<sup>2</sup>
 Misoperation of the contact shall be 1 ms max. in the free position and the total travel position.
- Vibration; Peak-to-peak amplitude 1.5 mm Vibration frequency 10 to 55 Hz for continuous 2 hours.
  - Misoperation of the contact shall be 1 ms max. in the free position and the total travel position.
- Allowable Operating Speed; 0.07 mm/s to 0.5 m/s
  - The lowest speed; Unstable condition of the contact shall be 0.1s max.
  - The highest speed; The actuator shall not damage.
- Mechanical Operating Frequency; 120 cycles/minute max.

## 5. LIFE

- Mechanical Life; 5000k cycles min. at "O.T." of 70 to 100% of the rating
- Electrical Life;
  - The conditions at operation frequency of 20 cycles a minute are satisfied.

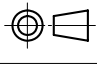
| Contact material | Condition   | Operation cycle              |
|------------------|---|------------------------------|
| Silver           | 5A-250 VAC<br>0.4A-125 VDC ; 0.2A-250 VDC                 | 50K cycles min.              |
|                  | 3A-250 VAC<br>0.4A- 30 VDC<br>0.2A-125 VDC ; 0.1A-250 VDC | 100K cycles min.             |
|                  | Gold Alloy  | 0.1A-125 VAC<br>0.1A- 30 VDC |

## 6. ENVIRONMENTAL CHARACTERISTICS

- Operating Temperature; -10 to +70 °c (at no freezing)
- Operating Humidity ; 98 %RH max.

## 7. MOUNTING

- Recommended Tightening Torque
  - For mounting the switch to panel ; 6 to 8 N·m (M6 cap screw)
  - For mounting the terminal to switch ; 0.4 to 0.6 N·m (M3)
  - For mounting the cover to housing ; 1.3 to 1.7 N·m (M4)
  - For mounting the plug to conduit hole in mounting surface ; 0.6~0.8 N·m (G1/2)
  - For mounting the plug to conduit hole in side surface ; 0.2~0.5 N·m (G1/2)

|                                |  |   |
|--------------------------------|--|---|
| 作成DR.<br>UEDA<br>10,21, '99    |  | 尺度SCALE<br>記入のない公差 TOL. UNLESS NOTED<br>~ |
| 検図CHK.<br>K.ABE<br>10,21, '99  | 形番<br>MODEL  | LDVS-5*****                               |
| 認可APPD<br>MURATA<br>10,22, '99 | 名称<br>NAME   | MULTIPLE<br>LIMIT SWITCH                  |
| 日付DATE<br>10,22, '99           | 図番<br>NO.  | AD53197E                                  |
| 改番REV.                         | 改番REV.   | 3/6                                       |

|           |            |            |              |              |          |             |
|-----------|------------|------------|--------------|--------------|----------|-------------|
| 頁<br>PAGE | 改番<br>REV. | 改番<br>REV. | 来歴<br>RECORD | : 日付<br>DATE | 担当<br>BY | 検閲<br>APPD. |
|-----------|------------|------------|--------------|--------------|----------|-------------|



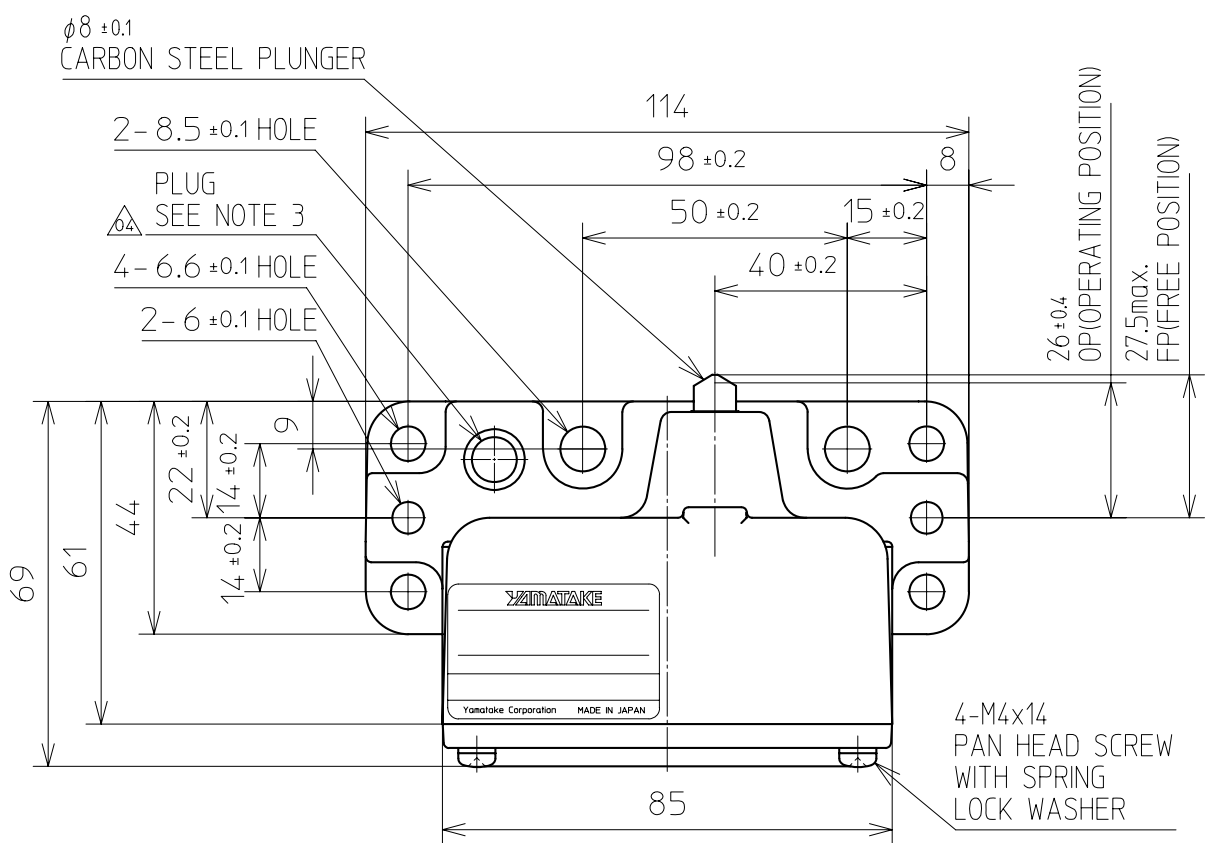
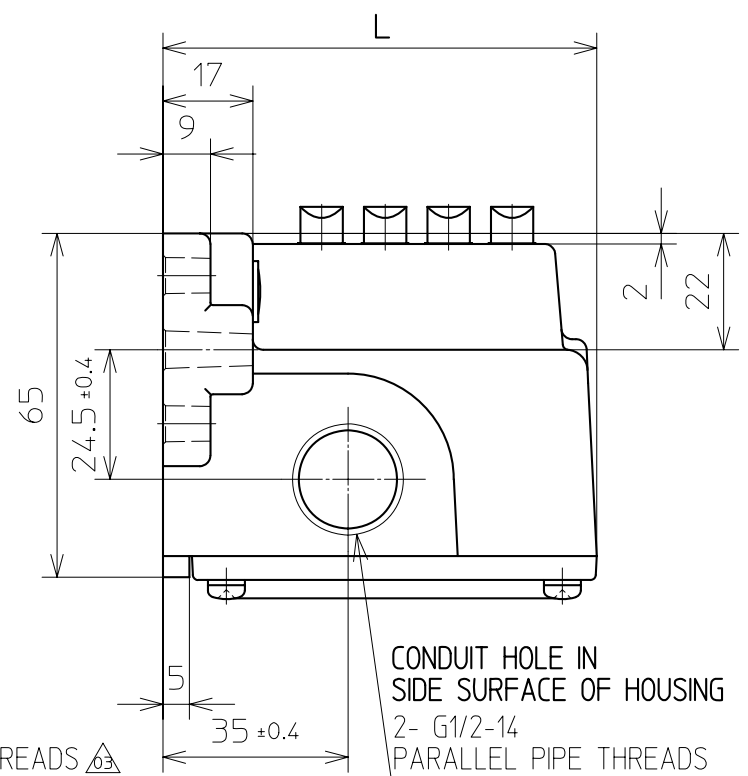
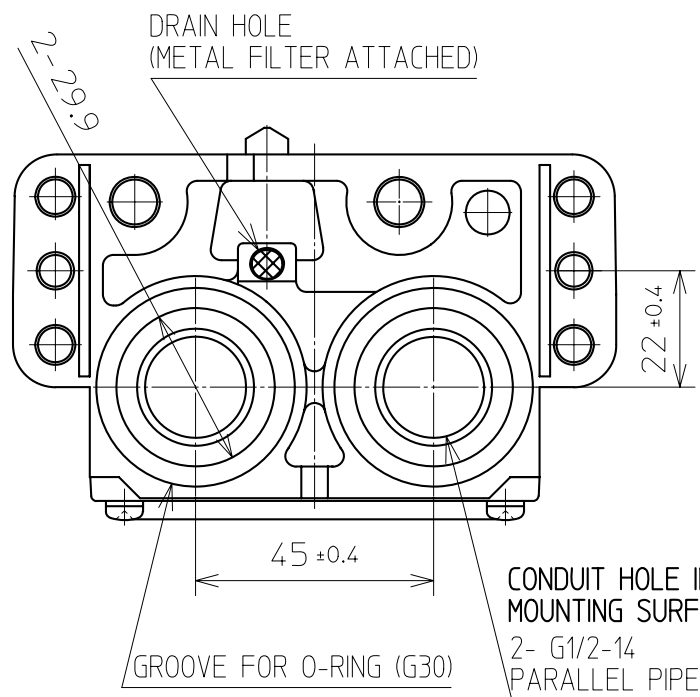
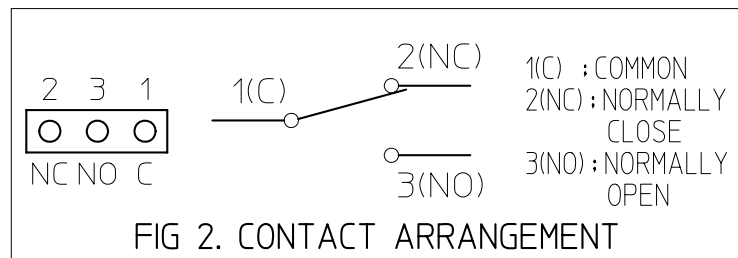
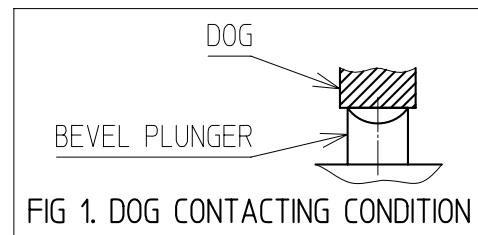
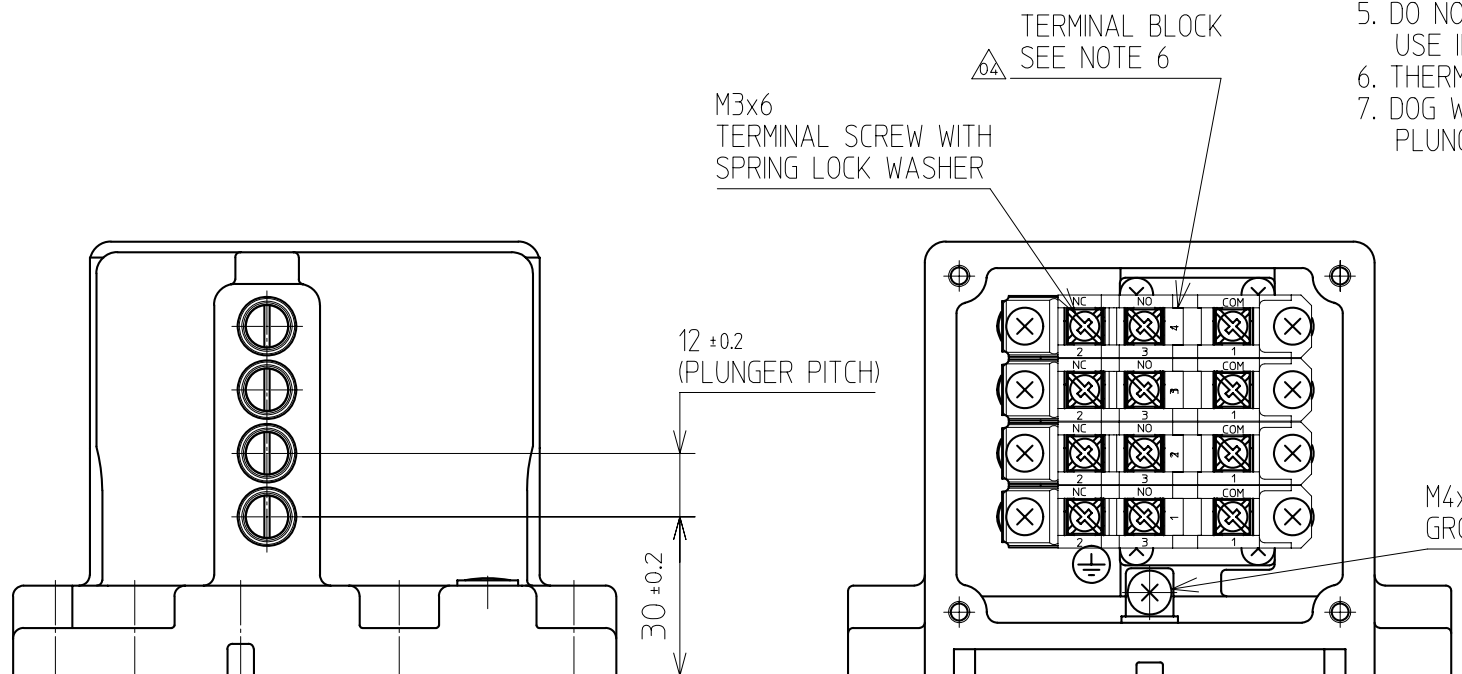
S.P. No.

Yamatake Corporation

製品仕様書  
SPECIFICATIONS

- NOTES
1. HOUSING AND COVER ARE MADE OF ALUMINUM ALLOY FINISHED WITH GRAY HAMMER TONE PAINT.
  2. WHEN PIPING, REMOVE SEALING PLUG ASSEMBLED IN CONDUIT.
  3. WHEN USING WITH MOUNTING SURFACE UPWARD, REMOVE SEALING PLUG TO PREVENT COOLANT FROM STAYING IN CONCAVITY.
  4. USE LEAD WIRES HAVING 0.5 TO 2.5mm<sup>2</sup> CROSS SECTIONAL AREA WITH RING OR SPADE TYPE INSULATED CRIMP TERMINAL FOR M3 SCREW. THE WIDTH OF TERMINAL SHALL BE LESS THAN 7.5 .
  5. DO NOT WIRE MORE THAN 2 WIRES TO EACH TERMINAL WITHOUT CRIMP TERMINAL IN CASE OF MULTIPLE WIRES, USE INSULATED RING TYPE CRIMP TERMINAL FOR M3 SCREW (WIDTH OF TERMINAL TIP SHALL BE 7.5 MAX.) .
  6. THERMINAL IDENTIFICATIONS AND SWITCH ARE MARKED ON TERMINAL BLOCKS NUMBERS.
  7. DOG WIDTH SHALL BE MORE THAN 8.
- PLUNGER SHOULD CONTACT WITH MATING DOG WITH ITS TOTAL WIDTH (REFER TO FIG 1) .

LDVS-5\*0\*\*\*  
(BEVEL PLUNGER)



| CHARACTERISTICS       |       |      |
|-----------------------|-------|------|
| OPERATING FORCE       | 14.7N | max. |
| RELEASE FORCE         | 3.0N  | min. |
| PRETRAVEL             | 1.5   | max. |
| MOVEMENT DIFFERENTIAL | 0.2   | max. |
| OVERTRAVEL            | 3     | min. |

| NUMBER OF PLUNGER | L  |
|-------------------|----|
| 2                 | 58 |
| 3                 | 70 |
| 4                 | 82 |

|         |            |          |           |          |
|---------|------------|----------|-----------|----------|
| 04      | UNIFIED    | 4,18,'06 | SAKIYAMA  | TOMITA   |
| 03      | JEO05-1312 | 6,22,'05 | KANAI     | TOMITA   |
| 02      | ▲ DELETE   | 9,10,'04 | TATSUHARA | TOMITA   |
| 改番 REV. | 来歴 RECORD  | 日付 DATE  | 担当 BY     | 検閲 APPD. |

|                       |                         |                           |                   |            |                                 |
|-----------------------|-------------------------|---------------------------|-------------------|------------|---------------------------------|
| 作成DR. UEDA 10.21, '99 | 検図CHK. K.ABE 10.21, '99 | 認可APPD. MURATA 10.22, '99 | 日付DATE 10.22, '99 | 尺度SCALE UN | 記入のない公差 TOL. UNLESS NOTED ± 0.4 |
| 形番 MODEL              | LDVS-5*****             |                           |                   |            |                                 |
| 名称 NAME               | MULTIPLE LIMIT SWITCH   |                           |                   |            |                                 |
| 図番 NO.                | AD53197E                | 改番REV. 04                 | 5/6               |            |                                 |

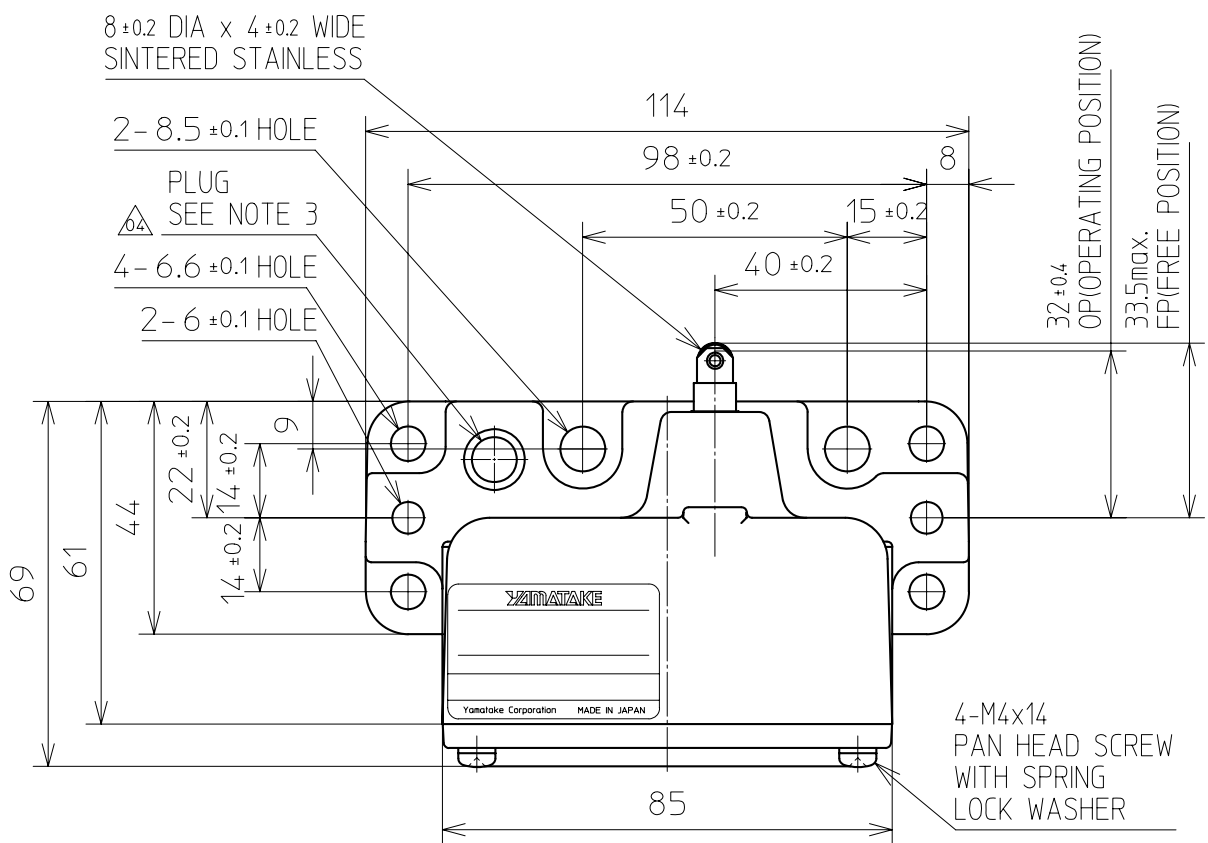
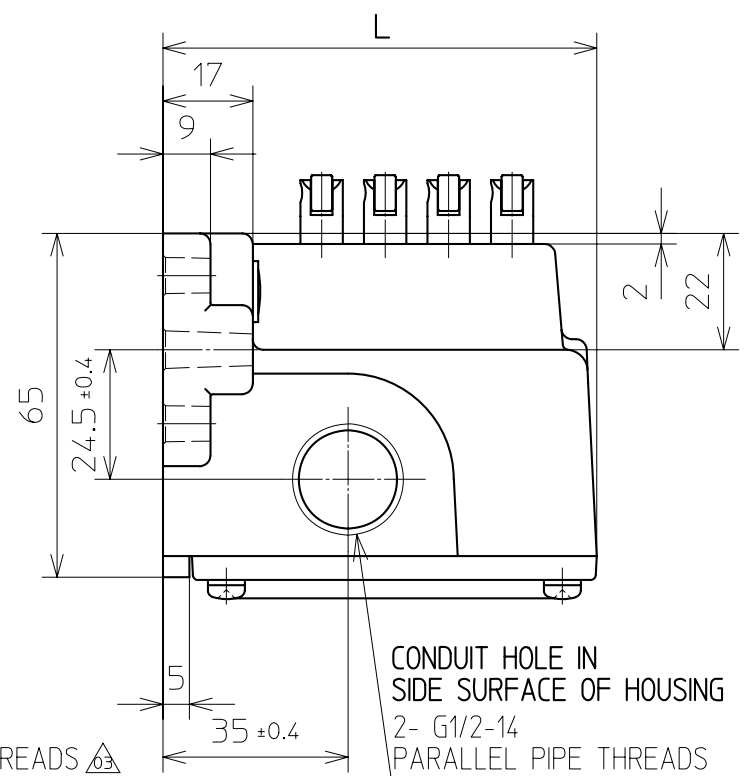
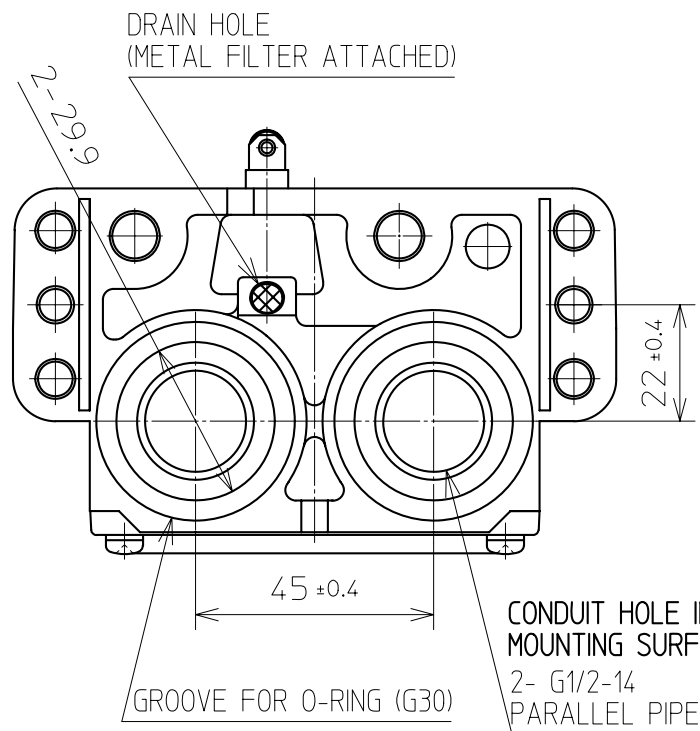
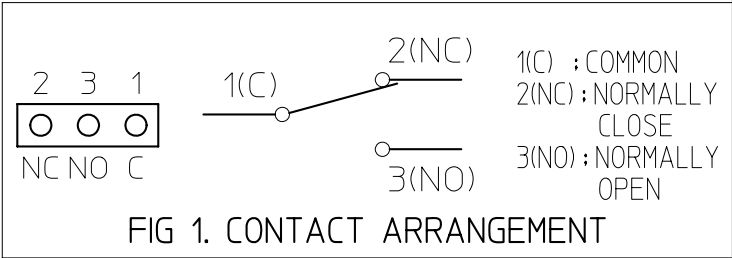
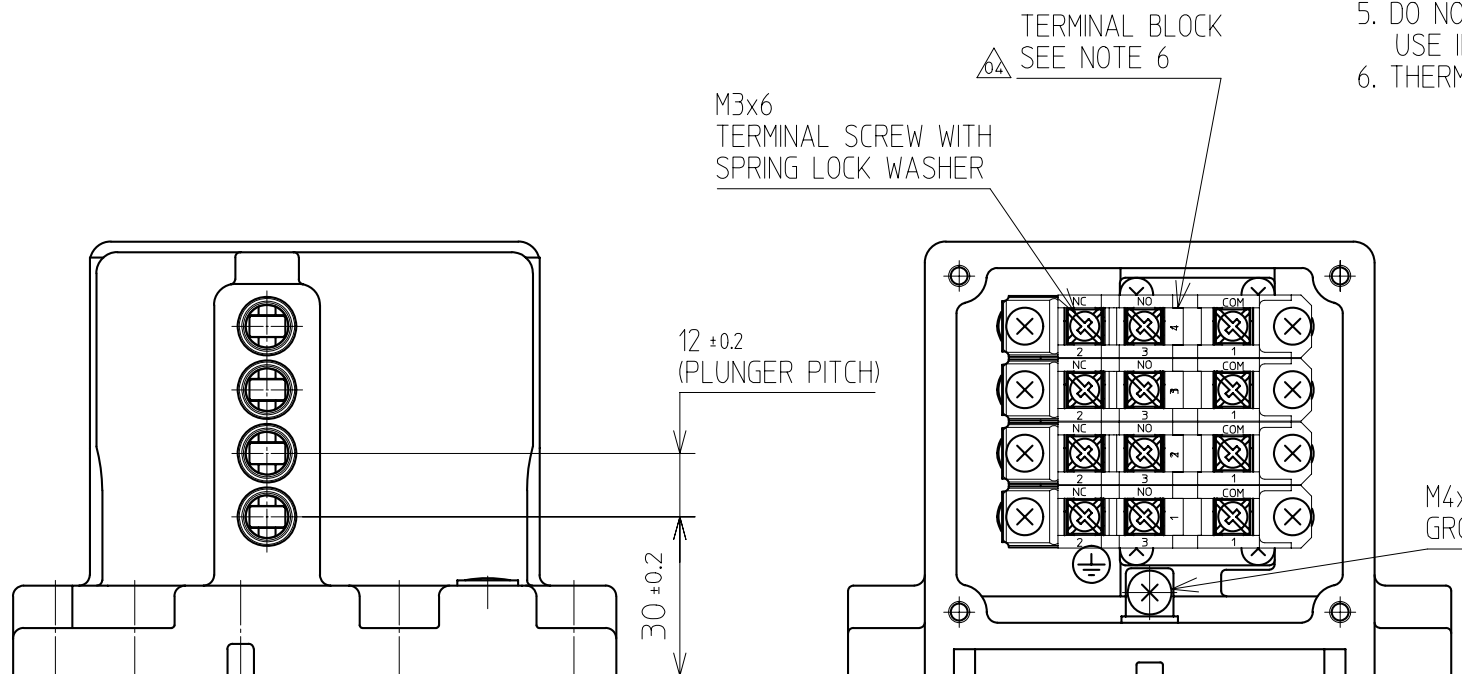
S.P. No.

Yamatake Corporation

製品仕様書  
SPECIFICATIONS

- NOTES
1. HOUSING AND COVER ARE MADE OF ALUMINUM ALLOY FINISHED WITH GRAY HAMMER TONE PAINT.
  2. WHEN PIPING, REMOVE SEALING PLUG ASSEMBLED IN CONDUIT.
  3. WHEN USING WITH MOUNTING SURFACE UPWARD, REMOVE SEALING PLUG TO PREVENT COOLANT FROM STAYING IN CONCAVITY.
  4. USE LEAD WIRES HAVING 0.5 TO 2.5mm<sup>2</sup> CROSS SECTIONAL AREA WITH RING OR SPADE TYPE INSULATED CRIMP TERMINAL FOR M3 SCREW. THE WIDTH OF TERMINAL SHALL BE LESS THAN 7.5 .
  5. DO NOT WIRE MORE THAN 2 WIRES TO EACH TERMINAL WITHOUT CRIMP TERMINAL IN CASE OF MULTIPLE WIRES, USE INSULATED RING TYPE CRIMP TERMINAL FOR M3 SCREW (WIDTH OF TERMINAL TIP SHALL BE 7.5 MAX.) .
  6. THERMINAL IDENTIFICATIONS AND SWITCH ARE MARKED ON TERMINAL BLOCKS NUMBERS.

LDVS-5\***1**\*\*\*  
(ROLLER PLUNGER)



CHARACTERISTICS

|                       |       |      |
|-----------------------|-------|------|
| OPERATING FORCE       | 14.7N | max. |
| RELEASE FORCE         | 3.0N  | min. |
| PRETRAVEL             | 1.5   | max. |
| MOVEMENT DIFFERENTIAL | 0.2   | max. |
| OVERTRAVEL            | 3     | min. |

| NUMBER OF PLUNGER | L  |
|-------------------|----|
| 2                 | 58 |
| 3                 | 70 |
| 4                 | 82 |

|            |              |              |           |             |
|------------|--------------|--------------|-----------|-------------|
| 04         | UNIFIED      | 4,18,'06     | SAKIYAMA  | TOMITA      |
| 03         | JEO05-1312   | 6,22,'05     | KANAI     | TOMITA      |
| 02         | ▲ DELETE     | 9,10,'04     | TATSUHARA | TOMITA      |
| 改番<br>REV. | 来歴<br>RECORD | : 日付<br>DATE | 担当<br>BY  | 検閲<br>APPD. |

|                             |                               |                                |                      |               |                                    |
|-----------------------------|-------------------------------|--------------------------------|----------------------|---------------|------------------------------------|
| 作成DR.<br>UEDA<br>10.21, '99 | 検図CHK.<br>K.ABE<br>10.21, '99 | 認可APPD<br>MURATA<br>10.22, '99 | 日付DATE<br>10.22, '99 | 尺度SCALE<br>UN | 記入のない公差 TOL. UNLESS NOTED<br>± 0.4 |
| 形番<br>MODEL                 | LDVS-5*****                   |                                |                      |               |                                    |
| 名称<br>NAME                  | MULTIPLE<br>LIMIT SWITCH      |                                |                      |               |                                    |
| 図番<br>NO.                   | AD53197E                      | 改番REV.<br>04                   | 6                    |               |                                    |

|         |   |      |                         |      |    |       |
|---------|---|------|-------------------------|------|----|-------|
| SP. NO. | Yamatake Corporation  |      | 製品仕様書<br>SPECIFICATIONS |      |    |       |
|         | <b>Terms and Conditions</b>   |      |                         |      |    |       |
|         | <p>We would like to express our appreciation for your purchase and use of Yamatake products.<br/>         You are required to acknowledge and agree upon the following terms and conditions for your purchase of Yamatake products (field instruments, control valves, and control products), unless otherwise stated in any separate document, including, without limitation, estimation sheets, written agreements, catalogs, specifications and instruction manuals.</p>   |      |                         |      |    |       |
|         | <p><b>1 Warranty period and warranty scope</b></p>  |      |                         |      |    |       |
|         | <p><b>1.1 Warranty period</b><br/>         Yamatake products shall be warranted for one (1) year from the date of your purchase of the said products or the delivery of the said products to a place designated by you.</p>   |      |                         |      |    |       |
|         | <p><b>1.2 Warranty scope</b><br/>         In the event that Yamatake product has any failure attributable to Yamatake during the aforementioned warranty period, Yamatake shall, without charge, deliver a replacement for the said product to the place where you purchased, or repair the said product and deliver it to the aforementioned place.<br/>         Notwithstanding the foregoing, any failure falling under one of the following shall not be covered under this warranty:</p>   |      |                         |      |    |       |
|         | <p>(1) Failure caused by your improper use of Yamatake product<br/>         (noncompliance with conditions, environment of use, precautions, etc. set forth in catalogs, specifications, instruction manuals, etc.);</p>  |      |                         |      |    |       |
|         | <p>(2) Failure caused for other reasons than Yamatake product;</p>  |      |                         |      |    |       |
|         | <p>(3) Failure caused by any modification or repair made by any person other than Yamatake or Yamatake's subcontractors;</p>  |      |                         |      |    |       |
|         | <p>(4) Failure caused by your use of Yamatake product in a manner not conforming to the intended usage of that product;</p>   |      |                         |      |    |       |
|         | <p>(5) Failure that the state-of-the-art at the time of Yamatake's shipment did not allow Yamatake to predict; or</p>   |      |                         |      |    |       |
|         | <p>(6) Failure that arose from any reason not attributable to Yamatake, including, without limitation, acts of God, disasters, and actions taken by a third party.</p>  |      |                         |      |    |       |
|         | <p>Please note that the term "warranty" as used herein refers to equipment-only-warranty, and Yamatake shall not be liable for any damages, including direct, indirect, special, incidental or consequential damages in connection with or arising out of Yamatake products.</p>  |      |                         |      |    |       |
|         | <p><b>2 Ascertainment of suitability</b><br/>         You are required to ascertain the suitability of Yamatake product in case of your use of the same with your machinery, equipment, etc. (hereinafter referred to as "Equipment") on your own responsibility, taking the following matters into consideration:</p>  |      |                         |      |    |       |
|         | <p>(1) Regulations and standards or laws that your Equipment is to comply with.</p>   |      |                         |      |    |       |
|         | <p>(2) Examples of application described in any documents provided by Yamatake are for your reference purpose only, and you are required to check the functions and safety of your Equipment prior to your use.</p>   |      |                         |      |    |       |
|         | <p>(3) Measures to be taken to secure the required level of the reliability and safety of your Equipment in your use<br/>         Although Yamatake is constantly making efforts to improve the quality and reliability of Yamatake products, there exists a possibility that parts and machinery may break down.<br/>         You are required to provide your Equipment with fool-proof design, fail-safe design, anti-flame propagation design, safety design, or the like so that the said Equipment may satisfy the level of the reliability and safety required in your use, whereby preventing any occurrence of physical injuries, fires, significant damage, and so forth.</p>   |      |                         |      |    |       |
|         | <p><b>3 Precautions and restrictions on application</b><br/>         Yamatake products other than those explicitly specified as applicable (e.g. Yamatake Limit Switch For Nuclear Energy) shall not be used in a nuclear energy controlled area (radiation controlled area).<br/>         Any Yamatake products shall not be used for/with medical equipment.<br/>         In addition,<br/>         you are required to conduct a consultation with our sales representative and understand detail specifications, cautions for operation, and so forth by reference to catalogs, specifications, instruction manual, etc. in case that you intend to use Yamatake product for any purposes specified in (1) through (6) below.<br/>         Moreover, you are required to provide your Equipment with fool-proof design, fail-safe design, anti-flame propagation design and other designs of protection/safety circuit on your own responsibility to ensure the reliability and safety, whereby preventing problems caused by failure or nonconformity.</p> |      |                         |      |    |       |
|         | <p>(1) For use under such conditions or in such environments as not stated in technical documents, including catalogs, specification, and instruction manuals</p>   |      |                         |      |    |       |
|         | <p>(2) For use of specific purposes, such as:</p>   |      |                         |      |    |       |
|         | <p>* Nuclear energy/radiation related facilities<br/>         [For use outside nuclear energy controlled areas]<br/>         [For use of Yamatake Limit Switch For Nuclear Energy]</p>  |      |                         |      |    |       |
|         | <p>* Machinery or equipment for space/sea bottom</p>  |      |                         |      |    |       |
|         | <p>* Transportation equipment<br/>         [Railway, aircraft, vessels, vehicle equipment, etc.]</p>  |      |                         |      |    |       |
|         | <p>* Antidisaster/crime-prevention equipment</p>  |      |                         |      |    |       |
|         | <p>* Burning appliances</p>   |      |                         |      |    |       |
|         | <p>* Electrothermal equipment</p>   |      |                         |      |    |       |
|         | <p>* Amusement facilities</p>   |      |                         |      |    |       |
| 頁       | 改番  | 改番   | 来歴                      | 日付   | 担当 | 検閲    |
|         |   | REV. | RECORD                  | DATE | BY | APPD. |

| SP.NO. |    | Yamatake Corporation |              | 製品仕様書<br>SPECIFICATIONS  |          |             |
|--------|----|----------------------|--------------|--|----------|-------------|
|        |    |                      |              | <p>(3) Supply systems such as electricity/gas/water supply systems, large-scale communication systems, and traffic/air traffic control systems requiring high reliability</p> <p>(4) Facilities that are to comply with regulations of governmental/public agencies or specific industries</p> <p>(5) Machinery or equipment that may affect human lives, human bodies or properties</p> <p>(6) Other machinery or equipment equivalent to those set forth in items (1) to (5) above which require high reliability and safety</p> <p><b>4 Precautions against long-term use</b></p> <p>Use of Yamatake products, including switches, which contain electronic components, over a prolonged period may degrade insulation or increase contact-resistance and may result in heat generation or any other similar problem causing such product or switch to develop safety hazards such as smoking, ignition, and electrification.</p> <p>Although acceleration of the above situation varies depending on the conditions or environment of use of the products, you are required not to use any Yamatake products for a period exceeding ten (10) years unless otherwise stated in specifications or instruction manuals.</p> <p><b>5 Recommendation for renewal</b></p> <p>Mechanical components, such as relays and switches, used for Yamatake products will reach the end of their life due to wear by repetitious open/close operations.</p> <p>In addition, electronic components such as electrolytic capacitors will reach the end of their life due to aged deterioration based on the conditions or environment in which such electronic components are used.</p> <p>Although acceleration of the above situation varies depending on the conditions or environment of use, the number of open/close operations of relays, etc. as prescribed in specifications or instruction manuals, or depending on the design margin of your machine or equipment, you are required to renew any Yamatake products every 5 to 10 years unless otherwise specified in specifications or instruction manuals.</p> <p>Field instruments (sensors such as pressure/flow/level sensors, regulating valves, etc.) will reach the end of their life due to aged deterioration of parts.</p> <p>For those parts that will reach the end of their life due to aged deterioration, recommended replacement cycles are prescribed. You are required to replace parts based on such recommended replacement cycles.</p> <p><b>6 Other precautions</b></p> <p>Prior to your use of Yamatake products, you are required to understand and comply with specifications (e.g., conditions and environment of use), precautions, warnings/cautions/notices as set forth in the technical documents prepared for individual Yamatake products, such as catalogs, specifications, and instruction manuals to ensure the quality, reliability, and safety of those products.</p> <p><b>7 Changes to specifications</b></p> <p>Please note that the descriptions contained in any documents provided by Yamatake are subject to change without notice for improvement or for any other reason.</p> <p>For inquires or information on specifications as you may need to check, please contact our branch offices or sales offices, or your local sales agents.</p> <p><b>8 Discontinuance of the supply of products/parts</b></p> <p>Please note that the production of any Yamatake product may be discontinued without notice.</p> <p>For repairable products, we will, in principle, undertake repairs for five (5) years after the discontinuance of those products. In some cases, however, we cannot undertake such repairs for reasons, such as the absence of repair parts.</p> <p>For field instruments, we may not be able to undertake parts replacement for similar reasons.</p> <p><b>9 Scope of services</b></p> <p>Prices of Yamatake products do not include any charges for services such as engineer dispatch service. Accordingly, a separate fee will be charged in any of the following cases:</p> <p>(1) Installation, adjustment, guidance, and attendance at a test run</p> <p>(2) Maintenance, inspection, adjustment, and repair</p> <p>(3) Technical guidance and technical education</p> <p>(4) Special test or special inspection of a product under the conditions specified by you</p> <p>Please note that we cannot provide any services as set forth above in a nuclear energy controlled area (radiation controlled area) or at a place where the level of exposure to radiation is equivalent to that in a nuclear energy controlled area.</p> |          |             |
| 頁      | 改番 | 改番<br>REV.           | 来歴<br>RECORD | 日付<br>DATE   | 担当<br>BY | 検閲<br>APPD. |