

S.P. No.

CATALOG LISTING

VCX-7 1 0 2 - 3 4 5

1 OPERATION TYPE, CIRCUIT DIAGRAM

Code	Operation type	Circuit diagram		
		C. C. W.	Free position	C. W.
0	Center neutral			
1	Simultaneous operation type			

2 ACTUATOR TYPE

Code	Actuator type
1	Standard roller lever
2	Without lever
3	Adjustable. roller lever

5 ENVIRONMENT

Code	Seal material	Roller			Remarks
		Material	dia.	wide	
~	Silicone rubber	Nylon	17.4	6.4	~
H	Silicone rubber	Brass	17.4	7.1	For tropics
L	Silicone rubber	Nylon	17.4	6.4	For cold district

3 CONDUIT

Code	Conduit
J	Increased safety thread joint steel conduit type
R	Increased safety packing connector type



4 CONTACT MATERIAL AND ELECTRICAL RATING

Code	Contact material	Electrical rating
~	Silver	5A-250VAC 0.4A-125VDC 0.2A-250VDC
K	Gold alloy	0.1A-125VAC 0.1A-30VDC

7 00
6 03
5 06
4 06
3 05
2 03
頁改番
PAGE REV.

06	ECOPO9-2298	12,16,'09	K.URAKI	SATO	作成DR. SAKIYAMA 8, 24, '07 尺度 SCALE 記入のない公差 TOL. UNLESS NOTED ~ ~ 検図CHK. SATO 8, 24, '07 認可APPD SUDO 8, 24, '07 日付DATE 8,24, '07 改番 REV.	形番 MODEL VCX-7***-*** 名称 NAME EXPLOSION PROOF SWITCH 図番 NO. AD15068E	改番 REV. 06 / 1/7
05	ECOPO9-1805	10, 1,'09	SATO	H.SASAKI			
04	ECOPO9-1472	7,30,'09	SATO	H.SASAKI			
03	ECOPO9-0199	4, 15,'09	SAKIYAMA	SATO			
02	ECOPO8-1580	12,17,'08	SAKIYAMA	SATO			
01	ECOPO8-0467	8,22,'08	SAKIYAMA	SATO			
00	ECO08-0533	3, 6,'08	SAKIYAMA	SATO			
改番 REV.	来歴 RECORD	: 日付 DATE	担当 BY	検閲 APPD.			

1. STANDARDS

- ・Conform to: **NECA C 4508**
- ・Approved by: **Explosion-protected electrical apparatus**
The Technology Institution of Industrial Safety
Explosion-proof structure: Ex d e IIC T6
Approved No. TC18291
NEPSI certification
Explosion-proof structure: Ex d e IIC T6
Standard: GB3836.1-2000
GB3836.2-2000
GB3836.3-2000
- 
- 
Approved No. GYJ081147
NK certification
Type approval No. 08T614

 Hazardous area classification : Zone 1

2. STRUCTURE

- ・Type of contact: **2xSPDT**
- ・Protective structure: **IP67 (IEC 60529)**
(JIS C 0920)
- ・Shape of terminal: **Screw (M3.5 pan head screw with square washer)**
- ・Shape of contact: **Silver contacts: Rivet**
Gold alloy contacts: Cross Point

3. ELECTRICAL CHARACTERISTICS


- ・Insulation resistance and dielectric strength:

Property	Insulation resistance (with 500Vdc megger)	Dielectric strength (50/60Hz, for 1 minute)
Parts measured		
Between terminals of same polarities	100 MΩ min.	600 Vac
Between terminals of different polarities	100 MΩ min.	2000 Vac
Between each terminal and non-live metal part	100 MΩ min.	2000 Vac
Between each terminal and earth	100 MΩ min.	2000 Vac

- ・Contact resistance

Silver contacts:

50 mΩ max. (initial) Measured by the voltage drop method at 6 to 8 Vdc 1A.


 Gold alloy contacts:

100 mΩ max. (initial) Measured by the voltage drop method at 6 to 8 Vdc 0.1A.

- ・Minimum contact operating current

Silver contacts: **10mA-24V, 20mA-12V**

 Gold alloy contacts: **10mA- 5V**

作成DR. SAKIYAMA 8.24.'07		尺度 SCALE UN	記入のない公差 TOL. UNLESS NOTED ~
検図CHK. SATO 8.24.'07	形番 MODEL	VCX-7***-***	
認可APPD SUDO 8.24.'07	名称 NAME	EXPLOSION PROOF SWITCH	
日付DATE 8.24.'07	図番 NO.	AD15068E	改番REV. 2/7

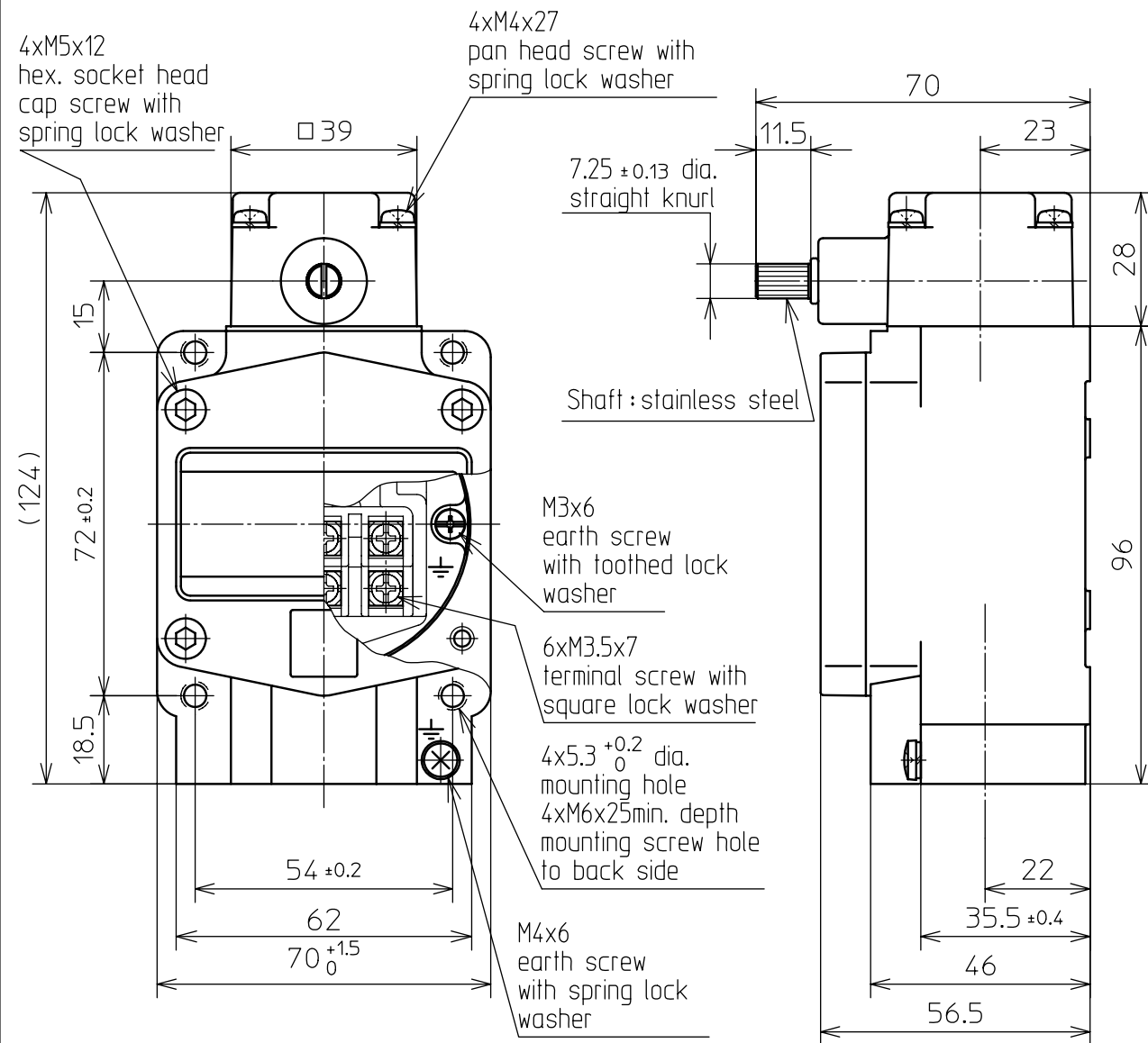
03	ADDED	4,15,'09	SAKIYAMA	SATO
02	ADDED	12,17,'08	SAKIYAMA	SATO
01	ADDED	8,22,'08	SAKIYAMA	SATO
改番 REV.	来歴 RECORD	: 日付 DATE	担当 BY	検閲 APPD.

S.P. No.

Yamatake Corporation

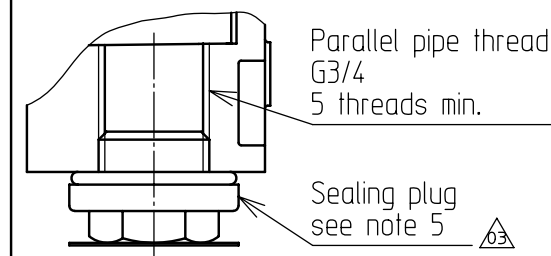
製品仕様書
SPECIFICATIONS

EXTERNAL VIEW

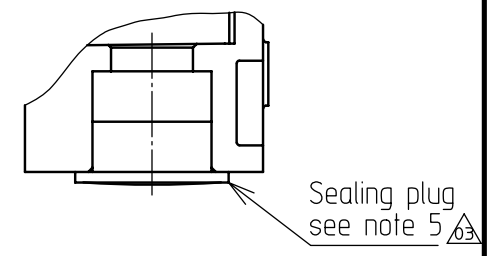


Conduit

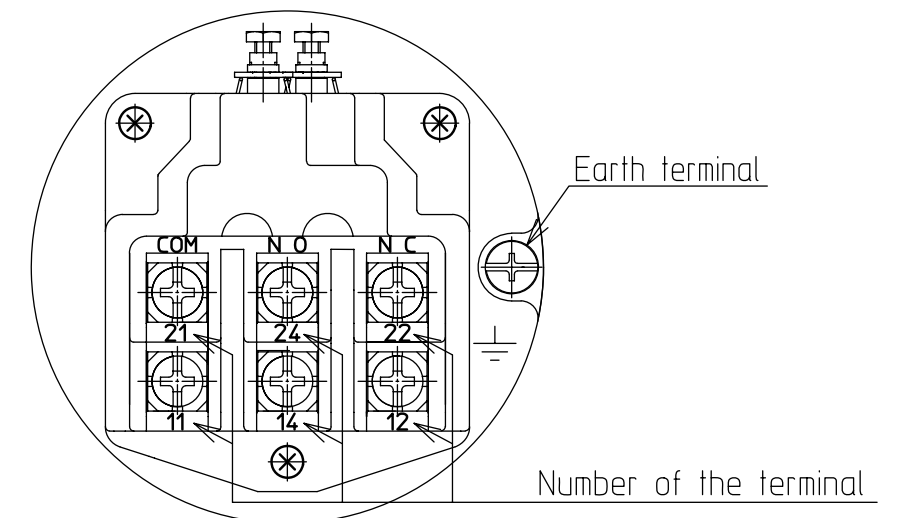
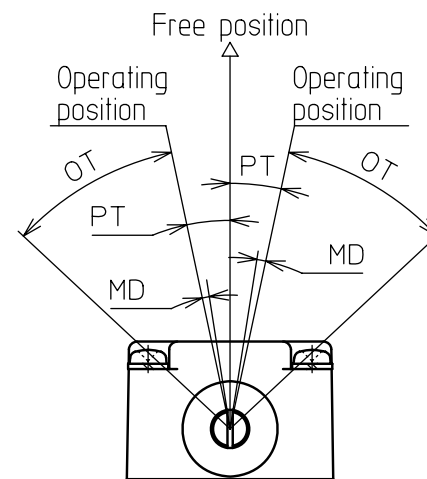
VCX-7***-**J****
(Increased safety thread)
(joint steel conduit type)



VCX-7***-**R****
(Increased safety)
(packing connector type)



Terminal details



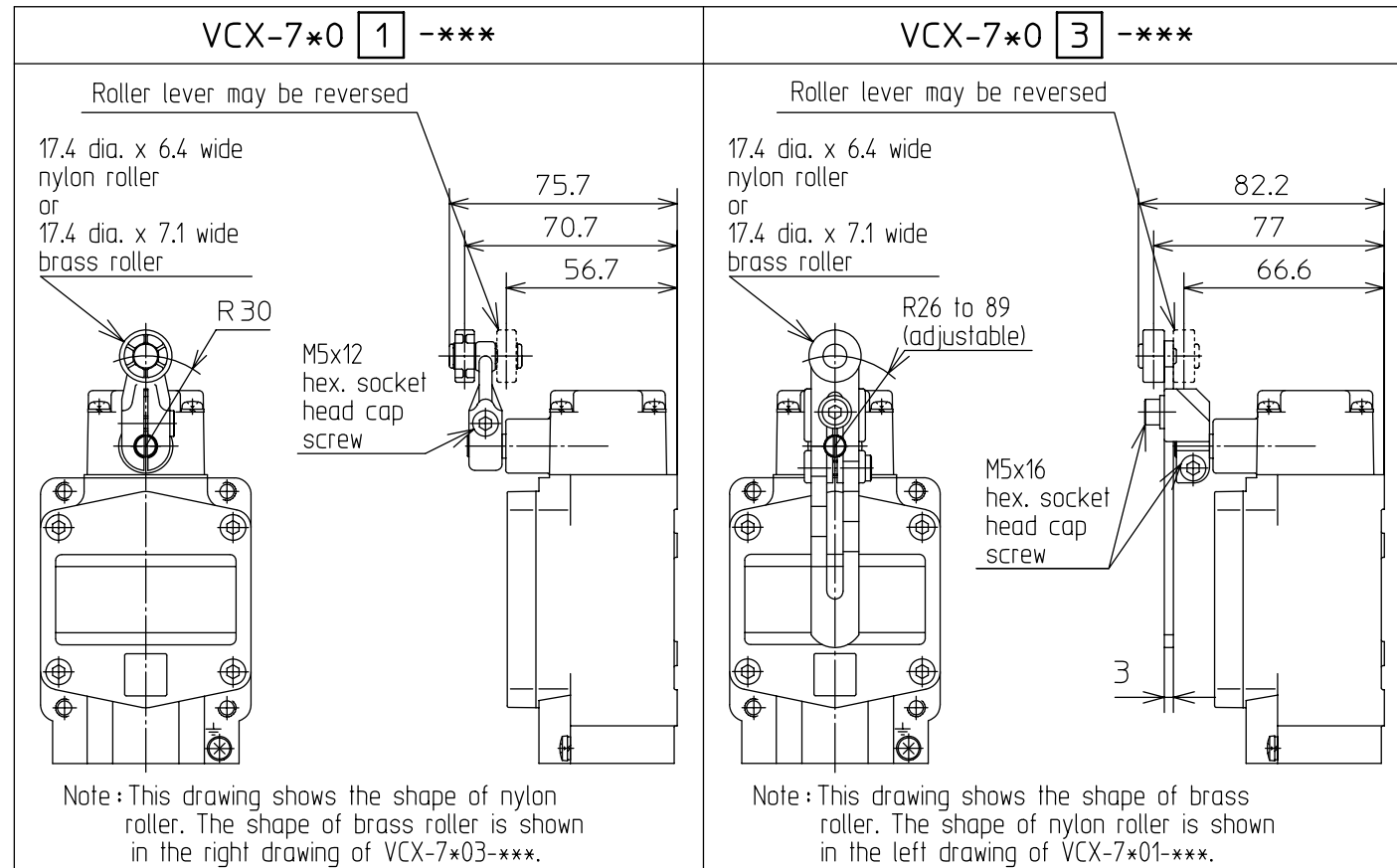
- Notes
1. This switch actuates in either direction.
 2. In the mechanical characteristics "OF" and "RF" are the characteristics at 30mm lever length.
 3. Housing, cover and head are made of aluminum alloy and finished with gray paint.
 4. External screws are made of stainless steel.
 5. Do not remove the plug until the wiring work.
 6. Do not use wire insulated with silicone rubber. Doing so might result in contact failure.
 7. As explosion-proof connector is not attached to switch, select and order separately 2PA-JEX1**L series (protective tube size G1/2) or 2PA-JEX2**L series (protective tube size G3/4).

Characteristics	Catalog listing	VCX-700*-***	VCX-710*-***
Operating force		15.7N max	15.7N max
Release force		2.2N min	2.2N min
Pretravel		10° max	12° max
Movement differential		3° max	3° max
Overtravel		35° min	35° min
Simultaneity of two switches		~	3° max

作成DR. SAKIYAMA 8.24.'07	検図CHK. SATO 8.24.'07	認可APPD SUDO 8.24.'07	日付DATE 8.24.'07	03	CHANGED, DELETED	4,15,'09	SAKIYAMA	SATO	改番 REV.	来歴 RECORD	: 日付 DATE	担当 BY	検閲 APPD.	尺度SCALE	記入のない公差 TOL. UNLESS NOTED	±0.8	形番 MODEL	VCX-7***-***	名称 NAME	EXPLOSION PROOF SWITCH	図番 NO.	AD15068E	改番REV. 03	6/7
-------------------------------	----------------------------	----------------------------	--------------------	----	------------------	----------	----------	------	------------	--------------	--------------	----------	-------------	---------	---------------------------	------	-------------	--------------	------------	------------------------	-----------	----------	--------------	-----

頁 改番
PAGE REV.

SP. No.



作成DR. SAKIYAMA 8, 24, '07	検図CHK. SATO 8, 24, '07	認可APPD SUDO 8, 24, '07	日付DATE 8, 24, '07	改番REV. 00	7/7
尺度SCALE UN	記入のない公差 TOL. UNLESS NOTED ± 0.8	形番 MODEL VCX-7***-***	名称 NAME EXPLOSION PROOF SWITCH	図番 NO. AD15068E	
改番 REV.	来歴 RECORD	: 日付 DATE	担当 BY	検閲 APPD.	

SP.NO.

Yamatake Corporation

製品仕様書
SPECIFICATIONS**Terms and Conditions**

We would like to express our appreciation for your purchase and use of Yamatake products.

You are required to acknowledge and agree upon the following terms and conditions for your purchase of Yamatake products (field instruments, control valves, and control products), unless otherwise stated in any separate document, including, without limitation, estimation sheets, written agreements, catalogs, specifications and instruction manuals.

1 Warranty period and warranty scope**1.1 Warranty period**

Yamatake products shall be warranted for one (1) year from the date of your purchase of the said products or the delivery of the said products to a place designated by you.

1.2 Warranty scope

In the event that Yamatake product has any failure attributable to Yamatake during the aforementioned warranty period, Yamatake shall, without charge, deliver a replacement for the said product to the place where you purchased, or repair the said product and deliver it to the aforementioned place.

Notwithstanding the foregoing, any failure falling under one of the following shall not be covered under this warranty:

- (1) Failure caused by your improper use of Yamatake product
(noncompliance with conditions, environment of use, precautions, etc. set forth in catalogs, specifications, instruction manuals, etc.);
- (2) Failure caused for other reasons than Yamatake product;
- (3) Failure caused by any modification or repair made by any person other than Yamatake or Yamatake's subcontractors;
- (4) Failure caused by your use of Yamatake product in a manner not conforming to the intended usage of that product;
- (5) Failure that the state-of-the-art at the time of Yamatake's shipment did not allow Yamatake to predict; or
- (6) Failure that arose from any reason not attributable to Yamatake, including, without limitation, acts of God, disasters, and actions taken by a third party.

Please note that the term "warranty" as used herein refers to equipment-only-warranty, and Yamatake shall not be liable for any damages, including direct, indirect, special, incidental or consequential damages in connection with or arising out of Yamatake products.

2 Ascertainment of suitability

You are required to ascertain the suitability of Yamatake product in case of your use of the same with your machinery, equipment, etc. (hereinafter referred to as "Equipment") on your own responsibility, taking the following matters into consideration:

- (1) Regulations and standards or laws that your Equipment is to comply with.
- (2) Examples of application described in any documents provided by Yamatake are for your reference purpose only, and you are required to check the functions and safety of your Equipment prior to your use.
- (3) Measures to be taken to secure the required level of the reliability and safety of your Equipment in your use

Although Yamatake is constantly making efforts to improve the quality and reliability of Yamatake products, there exists a possibility that parts and machinery may break down.

You are required to provide your Equipment with fool-proof design, fail-safe design, anti-flame propagation design, safety design, or the like so that the said Equipment may satisfy the level of the reliability and safety required in your use, whereby preventing any occurrence of physical injuries, fires, significant damage, and so forth.

3 Precautions and restrictions on application

Yamatake products other than those explicitly specified as applicable (e.g. Yamatake Limit Switch For Nuclear Energy) shall not be used in a nuclear energy controlled area (radiation controlled area).

Any Yamatake products shall not be used for/with medical equipment.

In addition,

you are required to conduct a consultation with our sales representative and understand detail specifications, cautions for operation, and so forth by reference to catalogs, specifications, instruction manual, etc. in case that you intend to use Yamatake product for any purposes specified in (1) through (6) below.

Moreover, you are required to provide your Equipment with fool-proof design, fail-safe design, anti-flame propagation design and other designs of protection/safety circuit on your own responsibility to ensure the reliability and safety, whereby preventing problems caused by failure or nonconformity.

- (1) For use under such conditions or in such environments as not stated in technical documents, including catalogs, specification, and instruction manuals
- (2) For use of specific purposes, such as:
 - * Nuclear energy/radiation related facilities
[For use outside nuclear energy controlled areas]
[For use of Yamatake Limit Switch For Nuclear Energy]
 - * Machinery or equipment for space/sea bottom
 - * Transportation equipment
[Railway, aircraft, vessels, vehicle equipment, etc.]
 - * Antidisaster/crime-prevention equipment
 - * Burning appliances
 - * Electrothermal equipment
 - * Amusement facilities

頁 改番

改番
REV.来歴
RECORD日付
DATE担当
BY検閲
APPD.

SP.NO.		Yamatake Corporation		製品仕様書 SPECIFICATIONS		
		<p>(3) Supply systems such as electricity/gas/water supply systems, large-scale communication systems, and traffic/air traffic control systems requiring high reliability</p> <p>(4) Facilities that are to comply with regulations of governmental/public agencies or specific industries</p> <p>(5) Machinery or equipment that may affect human lives, human bodies or properties</p> <p>(6) Other machinery or equipment equivalent to those set forth in items (1) to (5) above which require high reliability and safety</p> <p>4 Precautions against long-term use</p> <p>Use of Yamatake products, including switches, which contain electronic components, over a prolonged period may degrade insulation or increase contact-resistance and may result in heat generation or any other similar problem causing such product or switch to develop safety hazards such as smoking, ignition, and electrification.</p> <p>Although acceleration of the above situation varies depending on the conditions or environment of use of the products, you are required not to use any Yamatake products for a period exceeding ten (10) years unless otherwise stated in specifications or instruction manuals.</p> <p>5 Recommendation for renewal</p> <p>Mechanical components, such as relays and switches, used for Yamatake products will reach the end of their life due to wear by repetitious open/close operations.</p> <p>In addition, electronic components such as electrolytic capacitors will reach the end of their life due to aged deterioration based on the conditions or environment in which such electronic components are used.</p> <p>Although acceleration of the above situation varies depending on the conditions or environment of use, the number of open/close operations of relays, etc. as prescribed in specifications or instruction manuals, or depending on the design margin of your machine or equipment, you are required to renew any Yamatake products every 5 to 10 years unless otherwise specified in specifications or instruction manuals.</p> <p>Field instruments (sensors such as pressure/flow/level sensors, regulating valves, etc.) will reach the end of their life due to aged deterioration of parts.</p> <p>For those parts that will reach the end of their life due to aged deterioration, recommended replacement cycles are prescribed. You are required to replace parts based on such recommended replacement cycles.</p> <p>6 Other precautions</p> <p>Prior to your use of Yamatake products, you are required to understand and comply with specifications (e.g., conditions and environment of use), precautions, warnings/cautions/notices as set forth in the technical documents prepared for individual Yamatake products, such as catalogs, specifications, and instruction manuals to ensure the quality, reliability, and safety of those products.</p> <p>7 Changes to specifications</p> <p>Please note that the descriptions contained in any documents provided by Yamatake are subject to change without notice for improvement or for any other reason.</p> <p>For inquires or information on specifications as you may need to check, please contact our branch offices or sales offices, or your local sales agents.</p> <p>8 Discontinuance of the supply of products/parts</p> <p>Please note that the production of any Yamatake product may be discontinued without notice.</p> <p>For repairable products, we will, in principle, undertake repairs for five (5) years after the discontinuance of those products. In some cases, however, we cannot undertake such repairs for reasons, such as the absence of repair parts.</p> <p>For field instruments, we may not be able to undertake parts replacement for similar reasons.</p> <p>9 Scope of services</p> <p>Prices of Yamatake products do not include any charges for services such as engineer dispatch service. Accordingly, a separate fee will be charged in any of the following cases:</p> <p>(1) Installation, adjustment, guidance, and attendance at a test run</p> <p>(2) Maintenance, inspection, adjustment, and repair</p> <p>(3) Technical guidance and technical education</p> <p>(4) Special test or special inspection of a product under the conditions specified by you</p> <p>Please note that we cannot provide any services as set forth above in a nuclear energy controlled area (radiation controlled area) or at a place where the level of exposure to radiation is equivalent to that in a nuclear energy controlled area.</p>				
頁	改番	改番	来歴	日付	担当	検閲
	REV.		RECORD	DATE	BY	APPD.