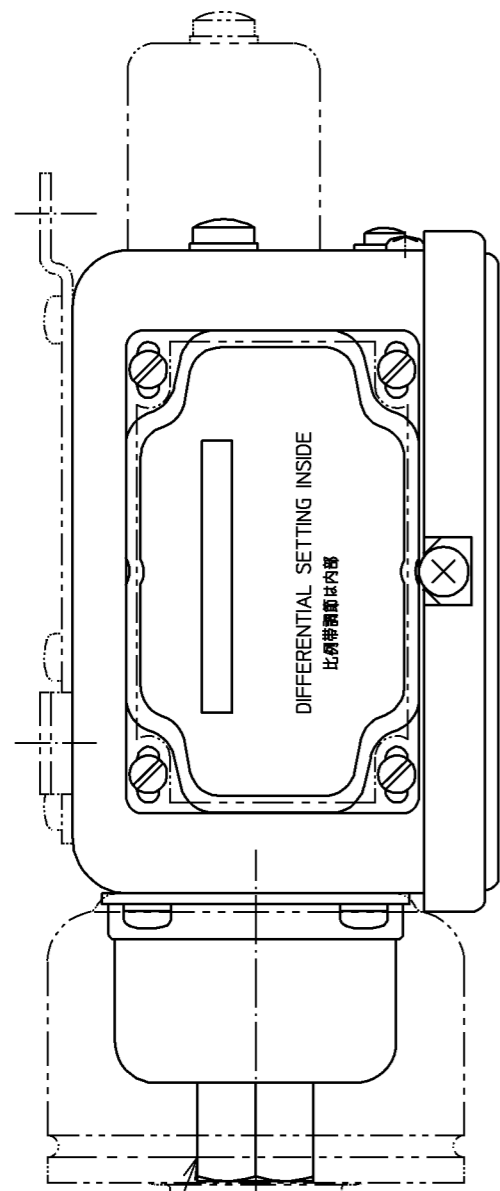


SP. No.

Yamatake Corporation

製品仕様書
SPECIFICATIONS

Range
35~1000kPa
70~2000kPa Only

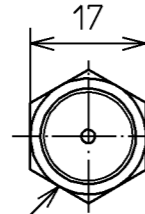


Refer to FIG. I

Refer to FIG. II

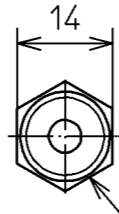
B

FIG. I



(Rc1/4)

FIG. II (Range 0~100kPa Only)



(R1/4)

D (See Sheet 3/3, Refer to Table 1)

A (See Sheet 3/3, Refer to Table 1)

B (See Sheet 3/3, Refer to Table 1)

C (See Sheet 3/3, Refer to Table 1)

(2.7)

(8.7)

(32)

100

(77.8)

(98.4)

(28.2)

49.2

(6)

2-φ22
Knockouts
For Conduit

Terminal
Cover

A
See Sheet
3/3

88

(5.3)

(8.3)

(15)

35

Range
0~100kPa Only

64

43

(4.8)

Rc1/4

R1/4

67

27

作成DR. M.Toma 5.29.98	尺度SCALE 1/10	記入のない公差 TOL. UNLESS NOTED
検図CHK. M.Ogido 5.29.98	形番 MODEL	L91B
認可APPD. K.Murata 5.29.98	名称 NAME	PROPORTIONAL PRESSURE TROL
日付DATE 5.29.98	図番 NO.	AD12685E
改番REV.	来歴RECORD	日付DATE
01	JE098-0463	6.23.98
		M.T
		M.O
		担当BY
		検閲APPD.
		改番REV.
		01
		2/3

SP.NO.

Yamatake Corporation

製品仕様書
SPECIFICATIONS

“RESTRICTIONS ON USE”

This product has been designed, developed and manufactured for general-purpose application in machinery and equipment.

Accordingly, when used in applications outlined below, special care should be taken to implement a fail-safe and/or redundant design concept as well as a periodic maintenance program.

- Safety devices for plant worker protection
- Start/stop control devices for transportation and material handling machines
- Aeronautical/aerospace machines
- Control devices for nuclear reactors

Never use this product in applications where human safety may be put at risk.

1	00	00	First issue	12-2-02	Harada	Miura
頁	改番	改番	来歴	日付	担当	検閲
	REV.	REV.	RECORD	DATE	BY	APPD.