

SP. No.

# Yamatake Corporation

## 製品仕様書 SPECIFICATIONS

Model:

Unit: kPa

Model	Range	Differential at Midscale *		Max. Operating Pressure
		Min.	Max.	
L404F200	0~100	10	40	160
L404F204	0~350	30	100	600
L404F208	35~1000	50	150	1600
L404F212	70~2000	150	350	2500

\* Value at mid-scale.

Electrical Ratings:

Unit: Amps.

	120VAC	240VAC	120VDC	240VDC
Full load	8	5.1	—	—
Locked rotor	48	30.6	—	—
Resistive load	20	20	0.2	0.1

Switching Action: SPDT Microswitch  
 Breaks R-B on pressure rise.  
 Makes R-W on pressure rise.

Insulation Resistance: Insulation resistance between each terminal and the case shall be more than 50MΩ.

Dielectric Strength: Device shall be capable of withstanding a potential of 1500V AC50 or 60Hz for 1 min., or 1800VAC for 1 sec. between each terminal and case without breakdown.

Max. Ambient Temperature: 65°C

Material of Case and Cover: Case; Cold rolled stainless steel sheet, Cover; Polycarbonate resin

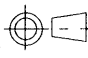
Finish: Gray enamel (Equivalent to Munsell code N4.3)

Element: Phosphor bronze bellows

Parts to be Ordered Separately: 188050A Mounting plate

Notes:

Control Mediums: Steam, air, non-combustible gases or fluids, non-corrosive gases or fluids.  
 Use L4086 Series, where subjected to water splash or entering of foreign material.

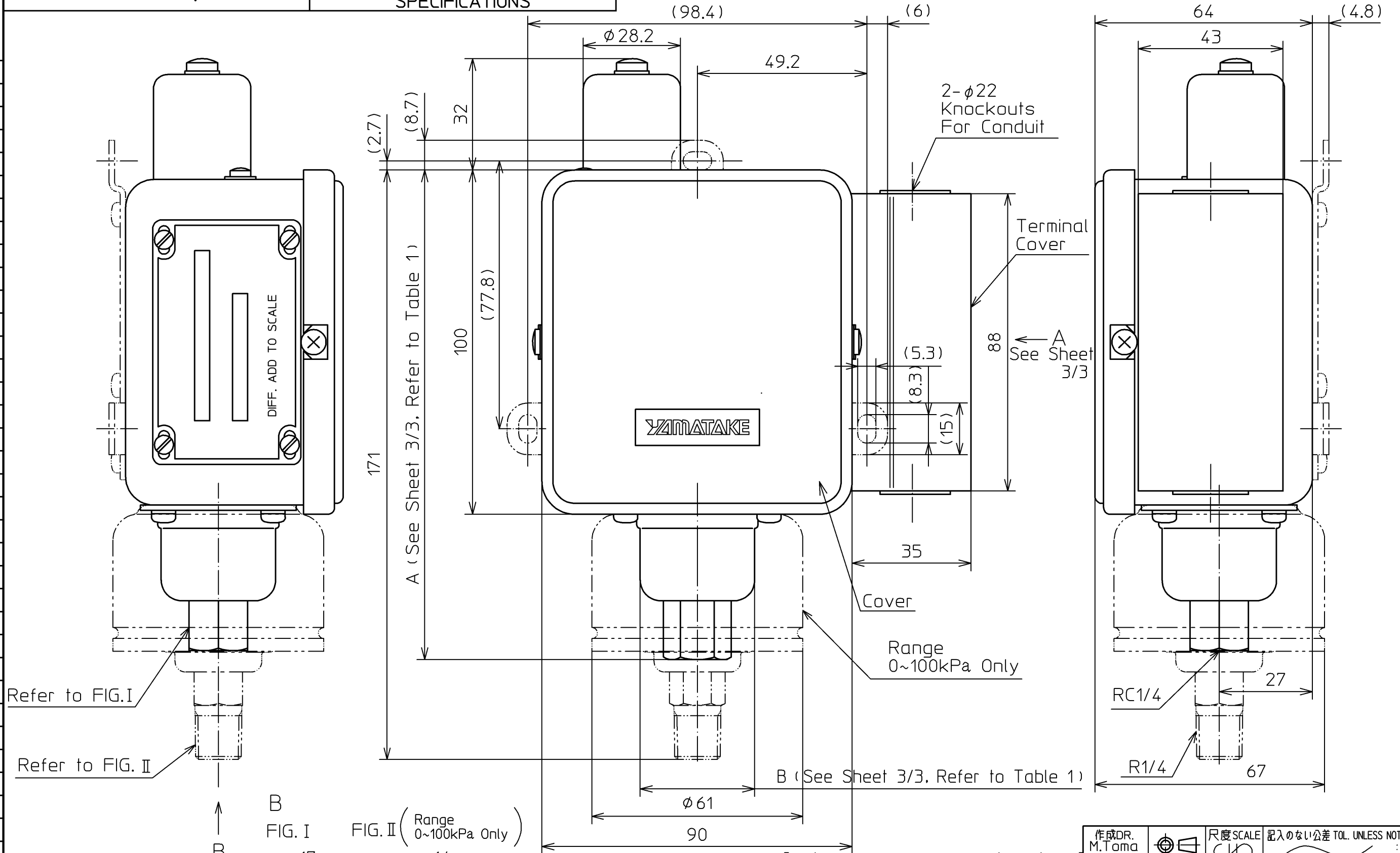
作成 DR.	I. Harada		尺度 SCALE	記入のない公差 TOL. UNLESS NOTED
検図 CHK.	形番 MODEL	L404F		
認可 APPD	名称 NAME	PRESSURETROL		
日付 DATE	図番 NO.	AD12684E		改番 REV.
4-6-98				03 / 3

頁	改番	REV.	来歴 RECORD	日付 DATE	担当 BY	検閲 APPD.
3	02	02	JEO00-0558	7-7-00	Harada	Aizawa
2	03	01	JEO98-0463	7-10-98	Harada	Uchiham
		03	JEO03-0690	9-22-03	Harada	Shoji

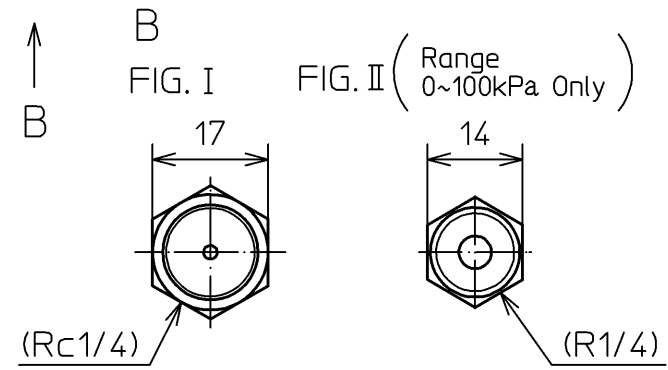
SP. No.

Yamatake Corporation

製品仕様書  
SPECIFICATIONS

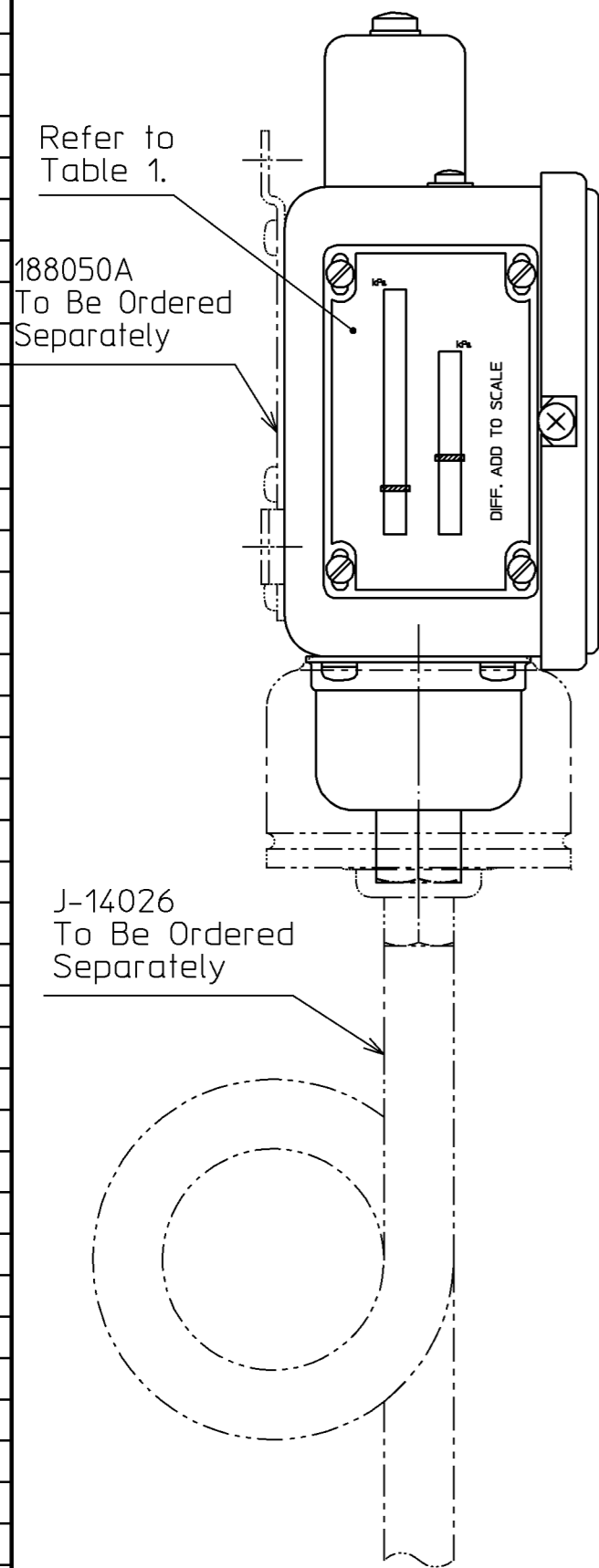


Refer to FIG. I  
Refer to FIG. II



03	JE003-0690	9-22-03	I.Harada	Miura
02	JE000-0558	7.17.'00	M.Takamura	M.Ogido
01	JE098-0463	6.23.98	M.T	M.O
改番 REV.	来歴 RECORD	: 日付 DATE	担当 BY	検閲 APPD.

作成DR. M.Tama 5.29.98	検図CHK. M.Ogido 5.29.98	認可APPD. K.Murata 5.29.98	日付DATE 5.29.98	尺度SCALE UN	記入のない公差 TOL. UNLESS NOTED
形番 MODEL	L404F				
名称 NAME	PRESSURETROL				
図番 NO.	AD12684E	改番REV. 03	2/3		



A Internal View (With Terminal Cover Removed)

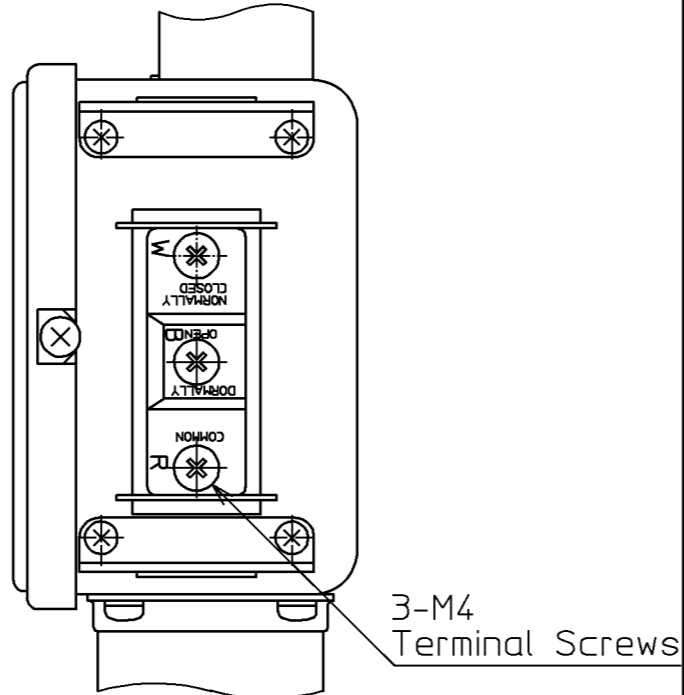
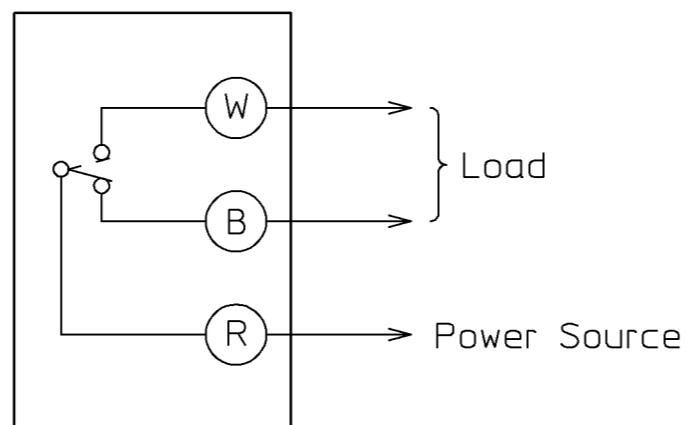


TABLE 1.

Model No.	L404F200	L404F204	L404F208	L404F212
Range	0~100kPa	0~350kPa	35~1000kPa	70~2000kPa
A	/		143	140
B			φ42	φ33
Scale				

WIRING Refer to Note 1.



Note 1. (R) - (B) Open and (R) - (W) Close at Pressure Rise.  
(R) - (B) Close and (R) - (W) Open at Pressure Fall.

02	JE000-0558	7.17.'00	M.Takamura	M.Ogido
01	JE098-0463	6.23.98	M.T	M.O
改番 REV.	来歴 RECORD	: 日付 DATE	担当 BY	検閲 APPD.

作成DR. M.Tomita 5.29.98	検図CHK. M.Ogido 5.29.98	認可APPD. K.Murata 5.29.98	日付DATE 5.29.98	形番 MODEL L404F	名称 NAME PRESSURETROL	図番 NO. AD12684E	改番REV. 02	3/3
尺度SCALE		記入のない公差 TOL. UNLESS NOTED						

SP.NO.

“RESTRICTIONS ON USE”

This product has been designed, developed and manufactured for general-purpose application in machinery and equipment.

Accordingly, when used in applications outlined below, special care should be taken to implement a fail-safe and/or redundant design concept as well as a periodic maintenance program.

- Safety devices for plant worker protection
- Start/stop control devices for transportation and material handling machines
- Aeronautical/aerospace machines
- Control devices for nuclear reactors

Never use this product in applications where human safety may be put at risk.

1	00	00	First issue	12-2-02	Harada	Miura
頁	改番	改番	来歴	日付	担当	検閲
	REV.	REV.	RECORD	DATE	BY	APPD.