

SP.NO.

Yamatake Corporation

製品仕様書 SPECIFICATIONS

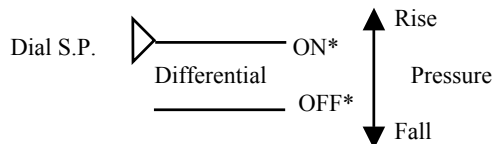
1. Model No., Range, Differential, and Accuracy:

Pipe Mount Model

Model No.	Setting Range	Differential Nominal	Press. Rating	Accuracy	
				Min. Setting	Max. Setting
C6097A2110	1 - 10 mbar (0.1 - 1 kPa)	0.4 mbar (0.04 kPa)	200 mbar (20 kPa)	±0.6 mbar (±0.06 kPa)	±1.5 mbar (±0.15 kPa)
C6097A2210	2.5 - 50 mbar (0.25 - 5 kPa)	0.6 mbar (0.06 kPa)	300 mbar (30 kPa)	±1.5 mbar (±0.15 kPa)	±7.5 mbar (±0.75 kPa)
C6097A2310	30 - 150 mbar (3 - 15 kPa)	2.8 mbar (0.28 kPa)	500 mbar (50 kPa)	±9 mbar (±0.9 kPa)	±22.5 mbar (±2.25 kPa)
C6097A2410	100 - 500 mbar (10 - 50 kPa)	7 mbar (0.7 kPa)	600 mbar (60 kPa)	±24 mbar (±2.4 kPa)	±75 mbar (±7.5 kPa)

Flange Mount Model

Model No.	Setting Range	Differential Nominal	Press. Rating	Accuracy	
				Min. Setting	Max. Setting
C6097A2200	2.5 - 50 mbar (0.25 - 5 kPa)	0.6 mbar (0.06 kPa)	300 mbar (30 kPa)	±1.5 mbar (±0.15 kPa)	±7.5 mbar (±0.75 kPa)
C6097A2300	30 - 150 mbar (3 - 15 kPa)	2.8 mbar (0.28 kPa)	500 mbar (50 kPa)	±9 mbar (±0.9 kPa)	±22.5 mbar (±2.25 kPa)
C6097A2400	100 - 500 mbar (10 - 50 kPa)	7 mbar (0.7 kPa)	600 mbar (60 kPa)	±24 mbar (±2.4 kPa)	±75 mbar (±7.5 kPa)



*ON: COM-NO make, COM-NC break
 OFF: COM-NO break, COM-NC make

Setting accuracy is set at the following condition.

Dial position: upward and horizontal

Low pressure side: atmospheric pressure

High pressure side: pressure increased

5 00

4 00

3 01

2 01

1 01

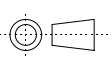
頁 改番

改番

REV.

来歴
RECORD: 日付
DATE担当
BY検閲
APPD.

作成 DR. Aizawa		尺度 SCALE ~	記入のない公差 TOL.UNLESS NOTED ~
検図 CHK. Shoji	形番 MODEL	C6097A 2XXX series	
認可 APPD Tsumura	名称 NAME	GAS PRESSURE SWITCH	
日付 DATE 29-9-99	図番 NO.	AD13023E	改番 REV 01 / 5

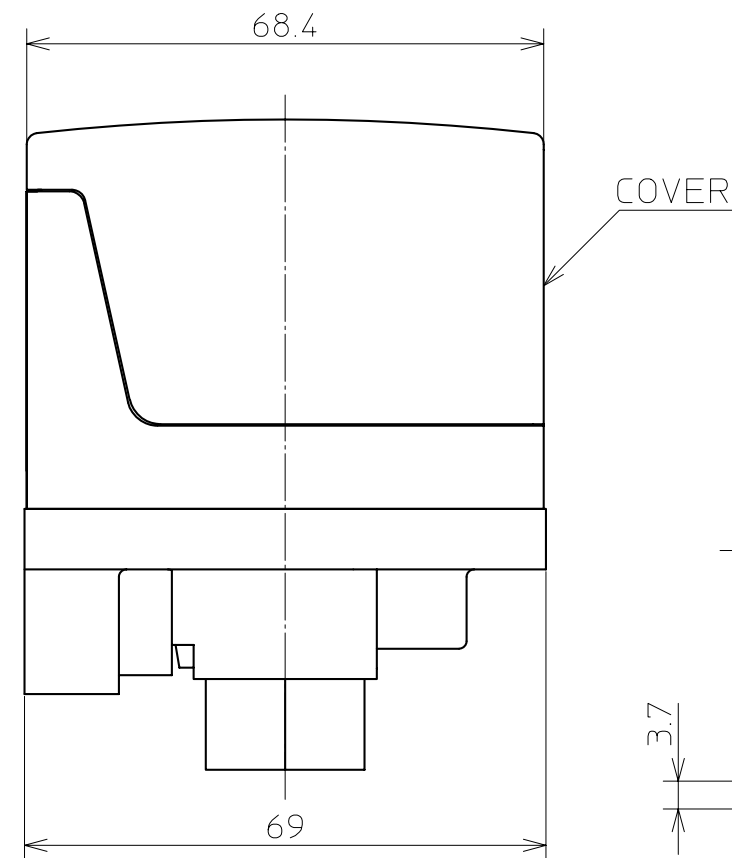
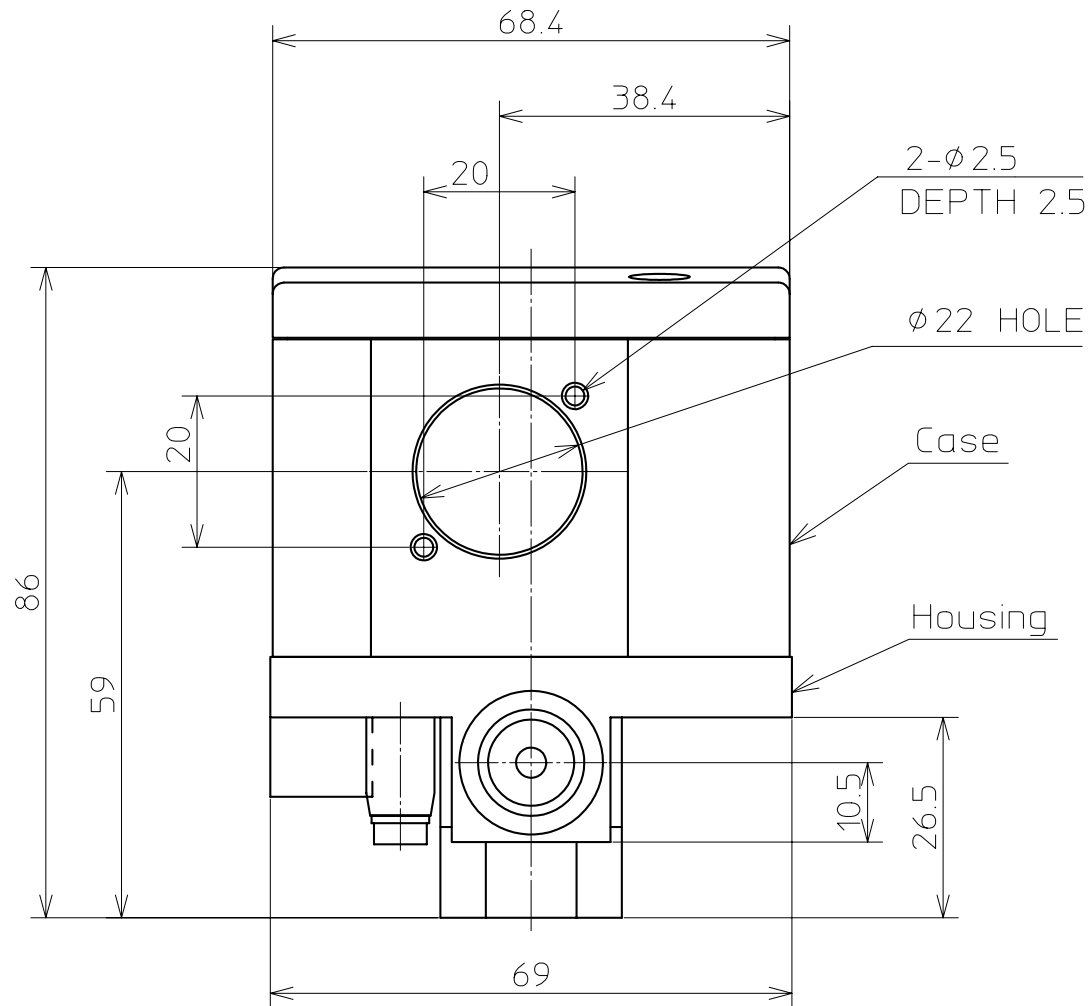
SP. NO.	Yamatake Corporation					製品仕様書 SPECIFICATIONS					
		<p>2. Applicable Fluid: Natural gas, City gas (except Cokes Gas), LPG and Air</p> <p>3. Control Operation: ON/OFF</p> <p>4. Output: SPDT contact output On pressure rise, between terminals COM and NO close On pressure fall, between terminals COM and NO open</p> <p>5. Contact Rating: Resistive load 5A 250VAC Inductive load 3A 250VAC (power factor 0.6)</p> <p>6. Minimum Contact Operating Current/Voltage: 50mA DC24V</p> <p>7. Insulation Resistance: 100M ohm or more between each terminal and dead metal part by 500VDC megger</p> <p>8. Dielectric Strength: Leakage current shall be 1mA max. under following test 600VAC, 50/60Hz, for 1min. between open terminals, and 1500VAC, 50/60Hz, for 1 min. between each terminal and dead metal part</p> <p>9. Contact Resistance: Initial 100m ohm max. (by 6 - 8VDC, 1A voltage drop method)</p> <p>10. Allowable Temperature: Ambient temperature: -15 to +60°C Fluid temperature: -15 to +60°C</p> <p>11. Endurance: 50,000 cycles min. with max. rated load</p> <p>12. Wiring Terminal: M3.5 screw terminal</p> <p>13. Mounting Position: With the pressure setting dial in horizontal (dial is up side) or vertical plane</p> <p>16. Protection Type: IP54</p> <p>17. Mass: 260g</p> <p>18. Approvals: Certified by GASTEC NV. /EN1854: 1999</p>									
						作成 DR. Aizawa		尺度 SCALE ~	記入のない公差 TOL. UNLESS NOTED ~		
						検図 CHK. Shoji	形番 MODEL	C6097A 2XXX series			
						認可 APPD Tsumura	名称 NAME	GAS PRESSURE SWITCH			
	01	ECO05-1010	Dec.12,'05	Aizawa	Shoji	日付 DATE 29-9-99	図番 NO.	AD13023E	改番 REV 01	2/5	
頁	改番	改番 REV.	来歴 RECORD	日付 DATE	担当 BY	検閲 APPD.					

SP. No.

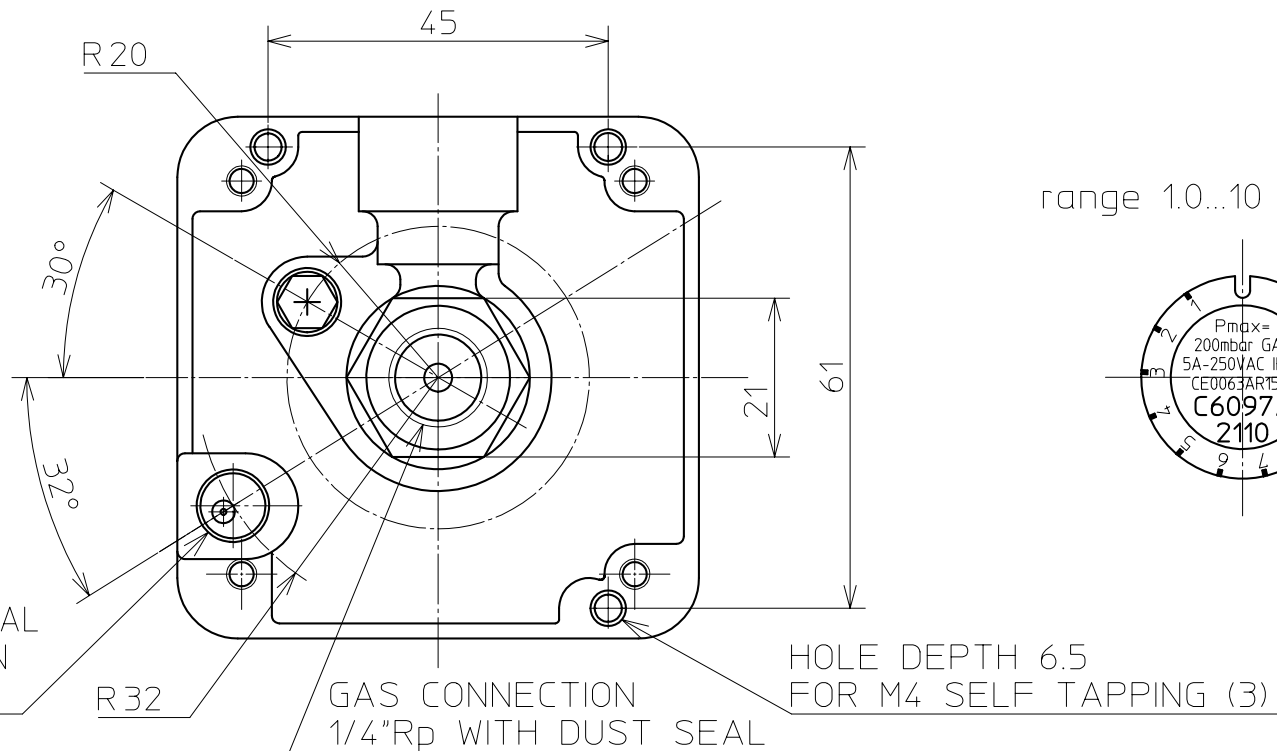
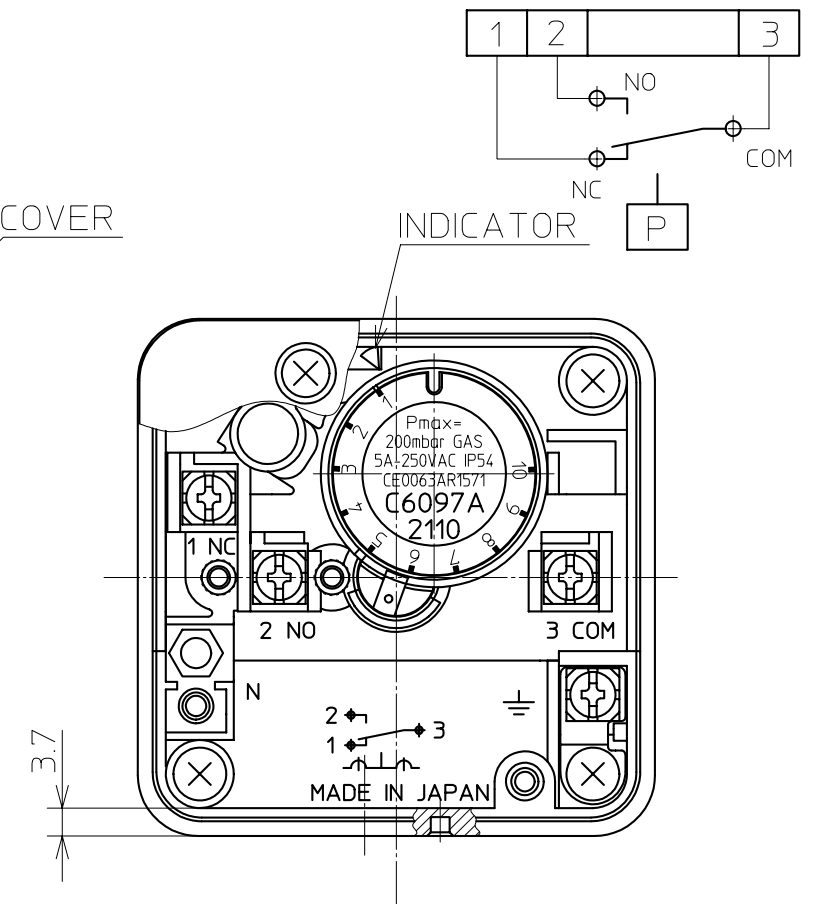
Yamatake Corporation

製品仕様書
SPECIFICATIONS

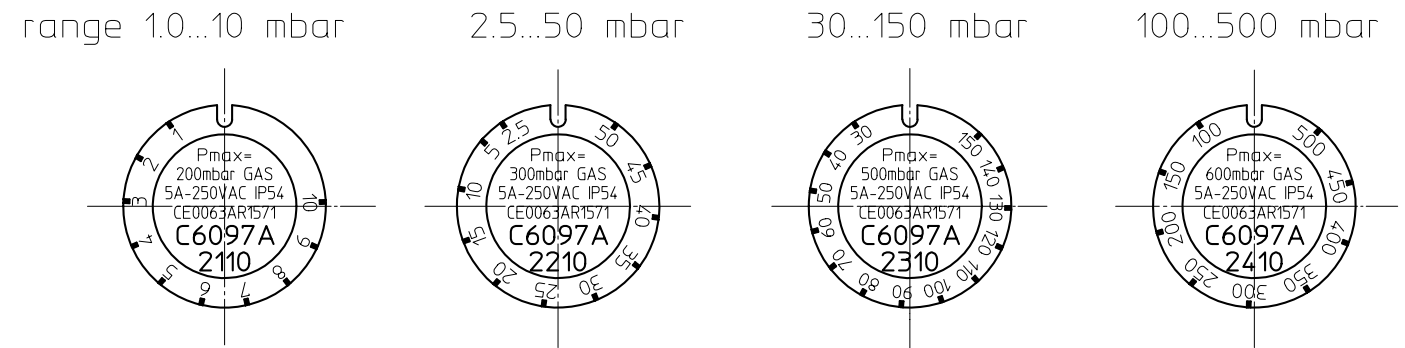
EXTERNAL FORM (PIPE MOUNT)



TERMINAL DIAGRAM



DRAWING OF DIAL SCALE



2. ORDER SWITCH OPERATION INDICATION LAMP (TYPE No.81404156) SEPARATELY.
NOTE1. FOR THE DIAL SCALE, REFER TO DRAWING OF DIAL SCALE.

作成DR. H.Aizawa	検図CHK. H.Shoji	認可APPD. T.Tsumura	日付DATE 29-9-99	改番REV. 01	来歴RECORD	日付DATE Dec.12,'05	担当BY Aizawa	検閲APPD. Shoji	形番MODEL C6097A2XXX Series	名称NAME GAS PRESSURE SWITCH	尺度SCALE CIP	記入のない公差TOL. UNLESS NOTED	改番REV. 01	頁 3/5
-------------------	-------------------	----------------------	-------------------	--------------	----------	----------------------	----------------	------------------	------------------------------	-------------------------------	----------------	--------------------------	--------------	----------

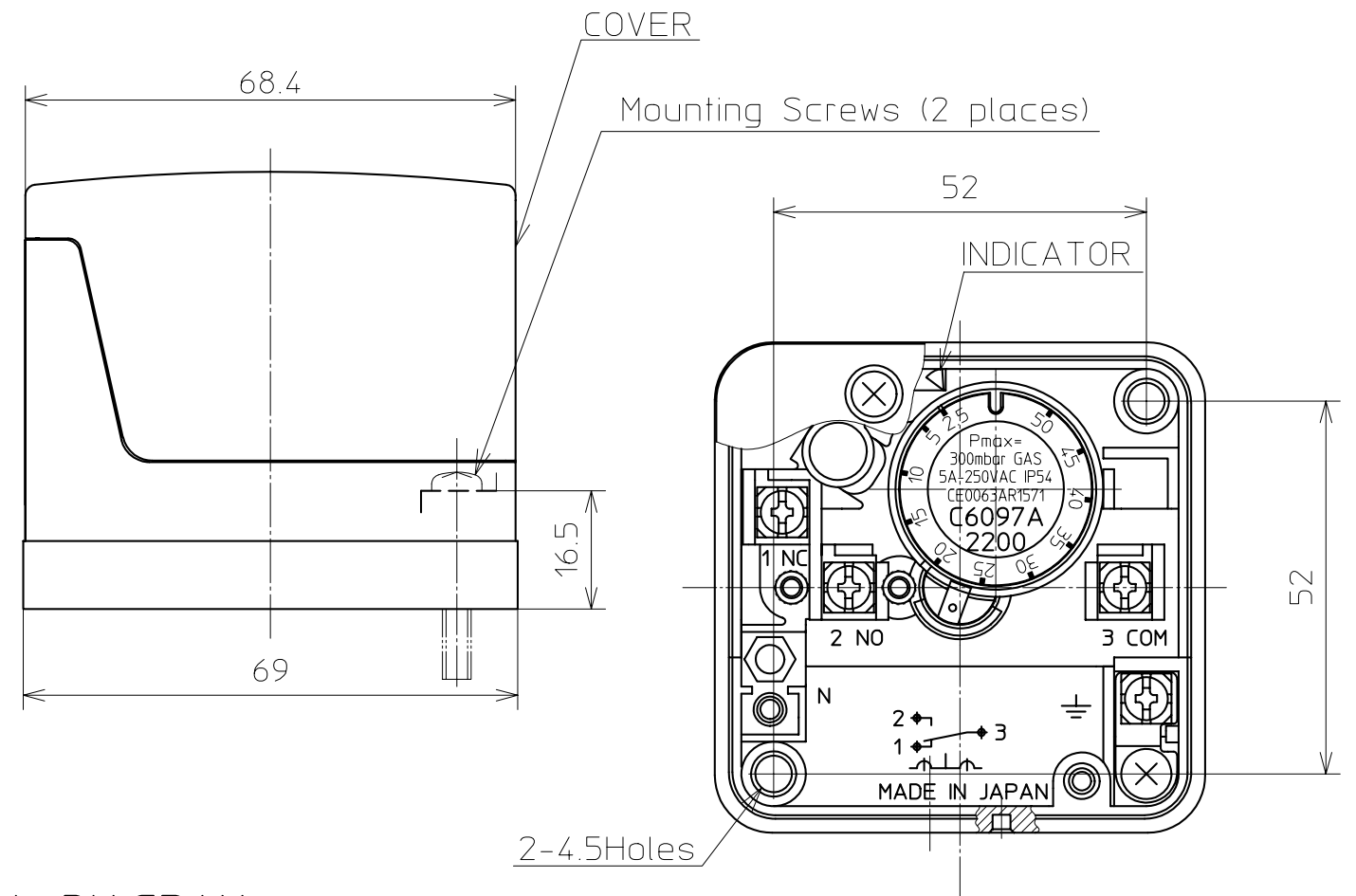
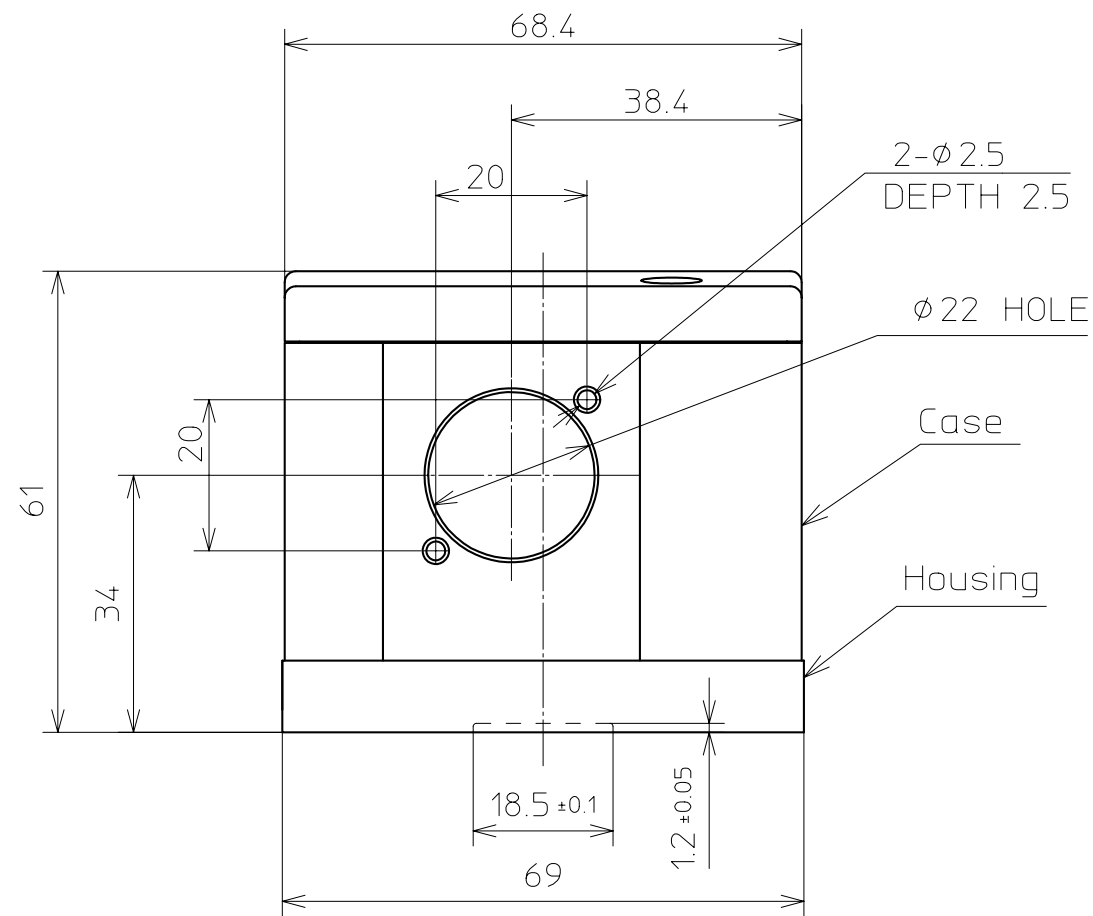
頁 改番

SP. No.

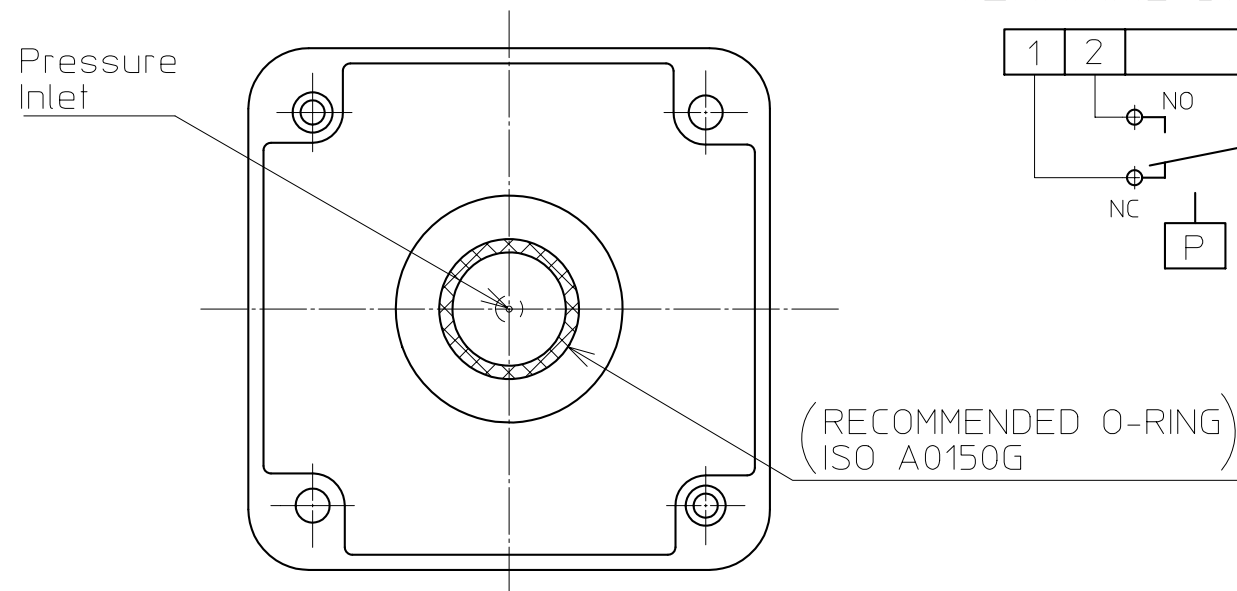
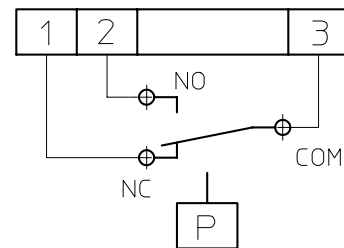
Yamatake Corporation

製品仕様書
SPECIFICATIONS

EXTERNAL FORM (FLANGE MOUNT)



TERMINAL DIAGRAM

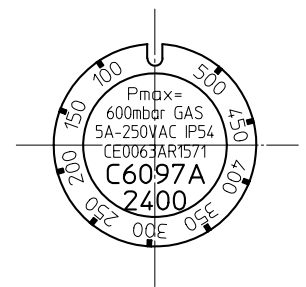
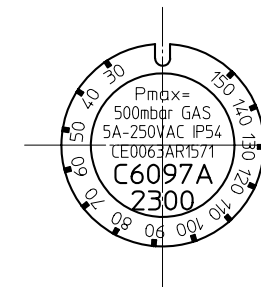
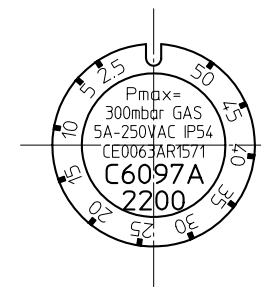


DRAWING OF DIAL SCALE

Range 2.5...50 mbar

30...150 mbar

100...500 mbar



2. ORDER SWITCH OPERATION INDICATION LAMP (TYPE No.81404156) SEPARATELY.
NOTE1. FOR THE DIAL SCALE, REFER TO DRAWING OF DIAL SCALE.

作成DR. H.Aizawa	⊕	尺度 SCALE	記入のない公差 TOL. UNLESS NOTED
検図CHK. H.Shoji	形番 MODEL	C6097A2XXX Series	
認可APPD. T.Tsumura	名称 NAME	GAS PRESSURE SWITCH	
日付 DATE 29-9-99	図番 NO.	AD13023E	改番REV. 4/5 00

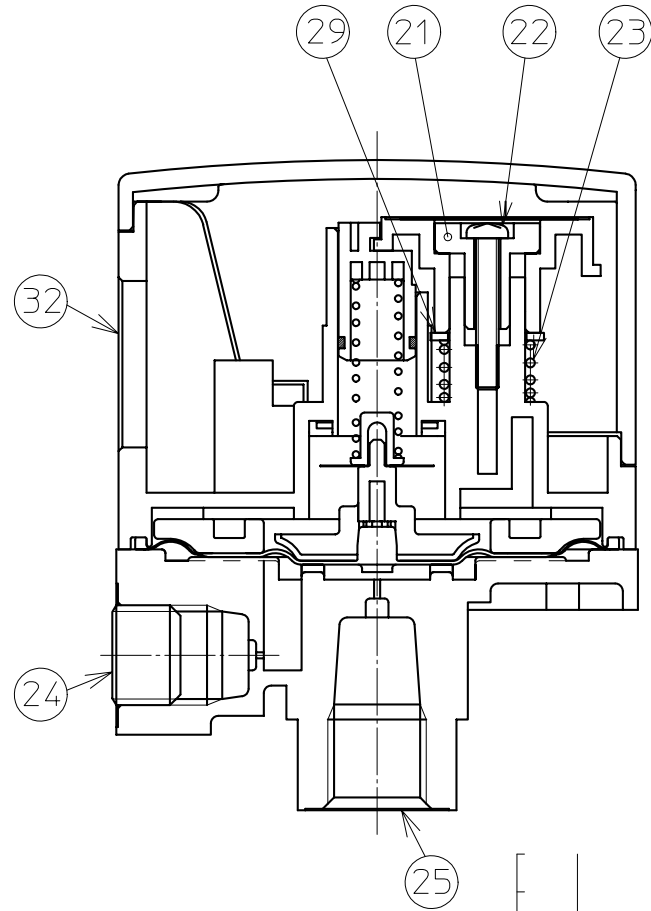
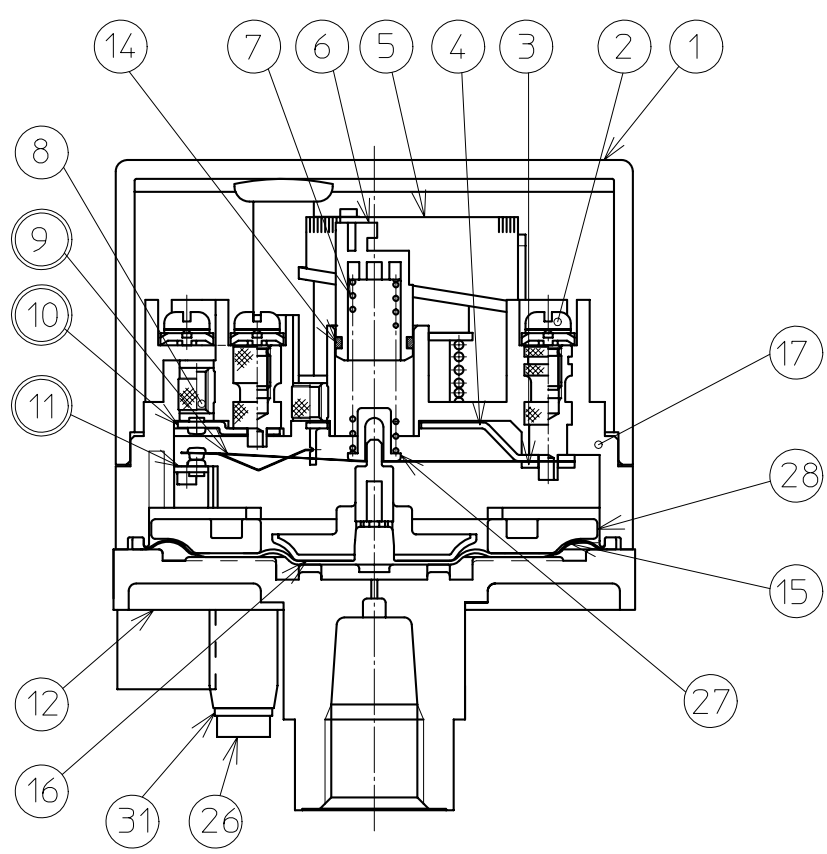
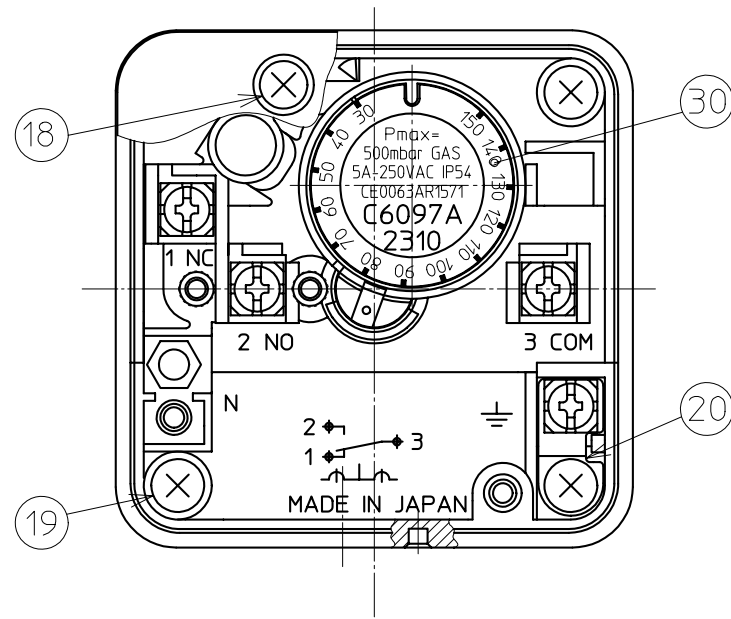
改番 REV.	来歴 RECORD	日付 DATE	担当 BY	検閲 APPD.
------------	--------------	------------	----------	-------------

SP. No.

Yamatake Corporation

製品仕様書
SPECIFICATIONS

STRUCTURAL FIGURE



32	DUST SEAL	ALUMINUM	1
31	SEAL	NA JOINT SHEET	1
30	NAME PLATE	POLYESTER	1
29	WASHER	STAINLESS STEEL	1
28	PLATE	POLYAMIDE	1
27	INSERT	POLYBUTYLENE-TEREPHTHALATE	1
26	SCREW	STEEL	1
25	DUST SEAL	ALUMINUM	1
24	BLANK CAP	STEEL	1
23	SPRING	STAINLESS STEEL	1
22	SCREW	STEEL	1
21	SCALE HOLDER	ABS	1
20	GROUND TERMINAL	BRASS	1
19	SCREW	STEEL	4
18	SCREW	STEEL	2
17	CASE	POLYBUTYLENE-TEREPHTHALATE	1
16	DISK	POLYAMIDE	1
15	DIAPHRAGM	NITRILE RUBBER	1
14	CAP SEAL	NITRILE RUBBER	1
12	HOUSING	ALUMINUM	1
11	CONTACT-STATIONARY	BRASS	1
10	CONTACT-STATIONARY	BRASS	1
9	CONTACT SPRING	STAINLESS STEEL	1
8	SCREW	STAINLESS STEEL	2
7	SPRING	STAINLESS STEEL	1
6	CAP	POLYACETAL	1
5	ADJUSTING SCALE	ABS	1
4	ANCHOR	BRASS	1
3	PLATE	BRASS	1
2	SCREW-LOCK WASHER	STEEL	4
1	COVER	POLYCARBONATE	1
No.	DESCRIPTION	MATERIAL	QTY.

作成DR. H.Aizawa	形番 MODEL	尺度SCALE	記入のない公差 TOL. UNLESS NOTED
検図CHK. H.Shoji	名称 NAME	C6097A2XXX Series GAS PRESSURE SWITCH	
認可APPD. T.Tsumura	図番 NO.	AD13023E	改番REV. 5/5 00
日付DATE 29-9-99	改番REV.		

SP.NO.

“RESTRICTIONS ON USE”

This product has been designed, developed and manufactured for general-purpose application in machinery and equipment.

Accordingly, when used in applications outlined below, special care should be taken to implement a fail-safe and/or redundant design concept as well as a periodic maintenance program.

- Safety devices for plant worker protection
- Start/stop control devices for transportation and material handling machines
- Aeronautical/aerospace machines
- Control devices for nuclear reactors

Never use this product in applications where human safety may be put at risk.

1	00	00	First issue	12-2-02	Harada	Miura
頁	改番	改番	来歴	日付	担当	検閲
	REV.	REV.	RECORD	DATE	BY	APPD.