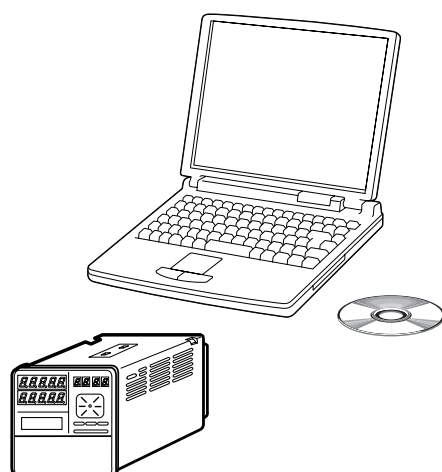


# Introduction to the SLP-P55 Smart Loader Package for the DCP551/552 Mark II Digital Control Programmer



Thank you for purchasing the SLP-P55 for the DCP551/552 Mark II.

This manual tells how to install the SLP-P55. It should be read by those who design and configure devices that use the DCP551/552 Mark II.

For more detailed information on settings, refer to manual No. CP-UM-5510E on the CD-ROM (in PDF format).

Yamatake Corporation

---

---

## RESTRICTIONS ON USE

---

---

This product has been designed, developed and manufactured for general-purpose application in machinery and equipment.

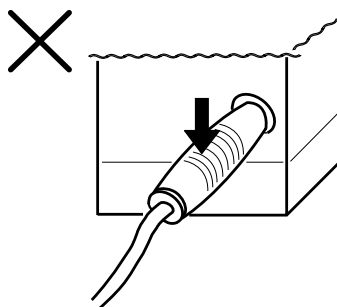
Accordingly, when used in applications outlined below, special care should be taken to implement a fail-safe and/or redundant design concept as well as a periodic maintenance program.

- Safety devices for plant worker protection
- Start/stop control devices for transportation and material handling machines
- Aeronautical/aerospace machines
- Control devices for nuclear reactors

Never use this product in applications where human safety may be put at risk.

### IMPORTANT

Do not apply a strong force while connecting a loader plug. Doing so might damage the instrument.



### **!** Handling Precautions

Application of excessive force to the loader plug might cause communication failure. If such failure happens, reconnect the loader plug correctly.

### NOTICE

---

Be sure that the user receives this manual before the product is used.

Copying or duplicating this user's manual in part or in whole is forbidden. The information and specifications in this manual are subject to change without notice.

Considerable effort has been made to ensure that this manual is free from inaccuracies and omissions. If you should find an error or omission, please contact Yamatake Corporation.

In no event is Yamatake Corporation liable to anyone for any indirect, special or consequential damages as a result of using this product.

---




©2008 Yamatake Corporation ALL RIGHTS RESERVED

The DIGITRONIK™ is a trademark of Yamatake Corporation in Japan.

# Conventions Used in This Manual

---

The following conventions are used in this manual:

-  **Handling Precautions:** Handling Precautions indicate items that the user should pay attention to when handling the SLP-P55.
-  **Note:** Notes indicate information that might benefit the user.
- : This indicates the item or page that the user is requested to refer to.
- (1), (2), (3): Numbers within parentheses indicate steps in a sequence or parts of an explanation.
- [OK] button: Indicates a selectable button on a personal computer screen.
- [File]: Indicates messages and menus displayed on the personal computer.
- >>: Indicates the result of an operation, details displayed on the personal computer or other devices, or the state of the device after operation.
- [Ctrl] key: Indicates keys on the keyboard.
- [Ctrl]+[a] key: Indicates the operation of pressing the [a] key on the keyboard while the [Ctrl] key is pressed.

# Unpacking


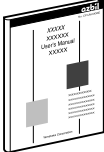
---

Check the following items when removing the SLP-P55 from its package:

1. Check the model No. to make sure that you have received the product that you ordered.
2. Check the SLP-P55 for any apparent physical damage.
3. Check the contents of the package against the Package List to make sure that all accessories are included in the package.

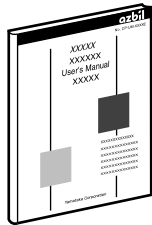
After unpacking, handle the SLP-P55 and its accessories taking care to prevent damage or loss of parts.

If an inconsistency is found or the package contents are not in order, immediately contact your dealer.

Name	Model No.	Q'ty	Remarks
System disk 	SLP-P55J60	1	CD-ROM A PDF version of manual No. CP-UM-5510E is also included.
Special cable	-	1	-
User's Manual 	CP-UM-5509E	1	This manual.

# The Role of This Manual

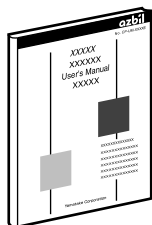
A total of four different manuals are available for the DCP551/552 Mark II. Read them as necessary for your specific requirements. If a manual you require is not available, contact Yamatake Corporation or its dealer.



## **DCP551 Mark II DIGITRONIK Digital Control Programmer User's Manual Manual No. CP-SP-1032E**

This manual is provided with the DCP551 (single-loop model). It is required reading for those in charge of designing, producing and maintaining control systems incorporating the DCP551, and for those using the DCP551 in other applications.

Its contents include mounting in a control panel, wiring, parameter setup, program setup, operation methods, maintenance and inspection, troubleshooting and specifications.



## **DCP552 MarkII DIGITRONIK Digital Control Programmer User's Manual Manual No. CP-SP-1033E**

This manual is provided with the DCP552 (double-loop model). It is required reading for those in charge of designing, producing and maintaining control systems incorporating the DCP552, and for those using the DCP552 in other applications.

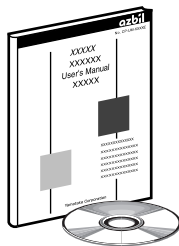
Its contents include mounting in a control panel, wiring, parameter setup, program setup, operation methods, maintenance and inspection, troubleshooting and specifications.



PDF file

## **SLP-P55 Smart Loader Package for DCP551/552 MarkII Digital Control Programmer Manual No. CP-UM-5510E**

A PDF version of this manual is supplied on the CD-ROM of the SLP-P55 system disk. With the SLP-P55, parameter setting and program setup for the DCP551/552 can be done on a PC running Windows 2000/XP/Vista. This manual tells how to operate the program.



## **Introduction to the SLP-P55 Smart Loader Package for the DCP551/552 Mark II Digital Control Programmer Manual No. CP-UM-5509E**

This manual.

This manual is supplied with the Smart Loader Package SLP-P55.

This manual tells how to install the SLP-P55 on a Windows 2000/XP/Vista PC.

# Organization of This User's Manual

---

This manual is organized as follows:

## **1. OVERVIEW**

Main features of the software.

## **2. SYSTEM OPERATING ENVIRONMENT**

The required operating environment on the personal computer.

## **3. INSTALLATION**

How to install the program and the driver for the USB loader cable.

# Contents

---

Conventions Used in This Manual  
Unpacking  
The Role of This Manual  
Organization of This User's Manual

## 1. OVERVIEW

- SLP functions..... 1
- File configuration of a project..... 2

## 2. SYSTEM OPERATING ENVIRONMENT

- Hardware..... 3
- Hardware configuration..... 3

## 3. INSTALLATION

- Installing the SLP..... 4
- Installing the USB loader cable device driver..... 7
- Uninstalling the device driver..... 12



# 1. OVERVIEW

---

The SLP-P55 (simply called “SLP” from here on) is an engineering tool for the DCP551/552 Mark II. The SLP runs on Windows 2000 Professional/XP/Vista (simply called "Windows" from here on) on a personal computer.

## ■ SLP functions

The SLP provides the following functions for configuring DCP operation.

- Project management
- Data communications
- Parameter editing
- Program pattern editing

### ● Project management

- Sets the model No. of the DCP.
- Saves created program patterns and parameters to a file on the hard disk.
- Reads saved files for editing.

### ● Data communications

- Writes created program patterns and parameters to the DCP
- Reads program patterns and parameters from the DCP.

### ● Parameter editing

- Inputs and edits parameters.

### ● Program pattern editing

- Creates and edits programs.
- Displays program patterns as images.
- Displays events in graph form.

#### Note

- "Project" refers to data for one DCP. Each project contains all project information and parameters, as well as multiple program patterns.

■ **File configuration of a project**

One project contains the following files:

File type	Description	File name
Project management file	This file stores project information, including DCP model information. Each project has one file of this type.	***_p55prj
Control data file for constants	This file stores the settings of the [Constant value control] tab in the parameter setting window. Each project has one file of this type.	***_parameter_const.s55
Event configuration data file	This file stores the settings of the [Event configuration data] tab in the parameter setting window. Each project has one file of this type.	***_parameter_event.s55
PID parameter file	This file stores the settings of the [PID data] tab in the parameter setting window. Each project has one file of this type.	***_parameter_pid.s55
Setup data file	This file stores the settings of the [Setup data] tab in the parameter setting window. Each project has one file of this type.	***_parameter_setup.s55
Variable parameter file	This file stores the settings of the [Variable parameter] tab in the parameter setting window. Each project has one file of this type.	***_parameter_variable.s55
Program file	This file stores the settings of the program setting window. A file of this type is created for each program.	***_program##.x55 ("##" stands for the double-digit program number.)

 **Handling Precautions**

- Do not use Windows file management software such as My Computer or Explorer to change file names. Doing so will prevent the SLP from handling the files properly.
- When copying projects to recording media like floppy disks, save all files of a project as a group. If any file is missing, the SLP may not handle the project properly.

## 2. SYSTEM OPERATING ENVIRONMENT

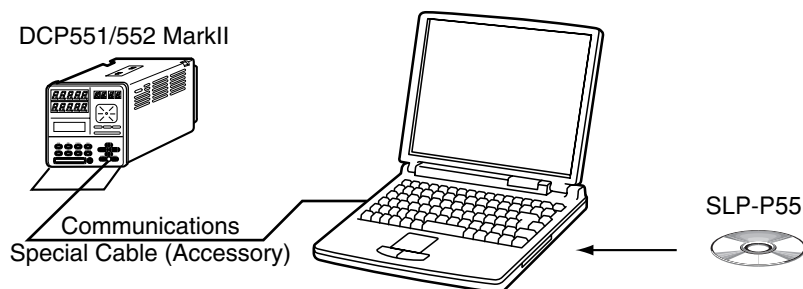
The following system environment is required for using the loader:

### ■ Hardware

Item	Description	
Personal Computer	Target model	PC/AT compatibles with a Pentium chip or higher
	Memory	32M byte or more
	Operating system	Windows 2000 Professional/XP/Vista (32 bits)
	USB port	1 port or more
Peripheral Devices	Display	1024 X 768 dot or more, 16 bit color or more
	Hard disk drive	Hard disk with at least 40M byte of free space
	CD-ROM drive	1 drive or more
	Pointing device	Windows-compatible mouse or equivalent device

### ■ Hardware configuration

#### ● General configuration



#### 📖 Note

- The operating environment requirements for this product were tested on a Dell OptiPlex GX240.

# 3. INSTALLATION

## ■ Installing the SLP

Install the SLP on the hard disk of a personal computer. Use the program disk that you purchased as a backup copy.

This section describes how to install the SLP on a personal computer.

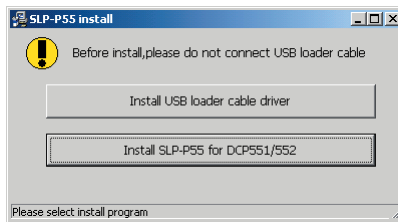
### ! Handling Precautions

- This disk does not contain the operating system, and you cannot use without the operating system.
- If you start the setup program while another application is running, the program may malfunction. Stop memory-resident applications (TSRs) before starting the setup program. The SLP sometimes cannot start depending on the combination of other applications and drivers. For details on Windows and personal computer settings, refer to the manuals provided with Windows and the personal computer.

The following sample screens with descriptions are taken from a personal computer running the Windows 2000 and XP operating system:

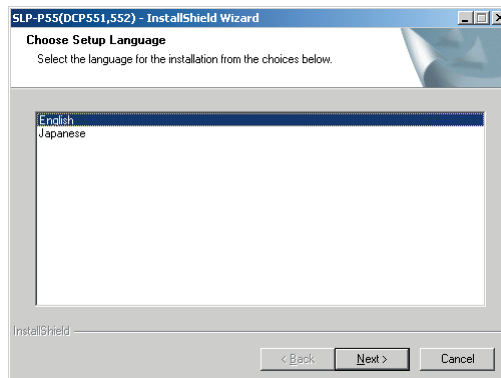
(1) Set the CD-ROM in the CD-ROM drive of your personal computer.

>>The installation program is then started up automatically and the following screen appears:



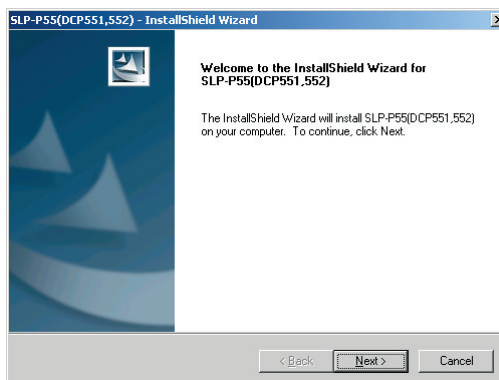
(2) Click [Install SLP-P55 for DCP551/552].

>>The choose setup language screen appears:



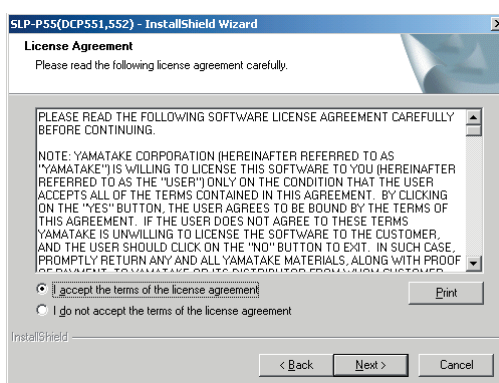
(3) Select [English] and click the [Next>] button.

>>The following screen appears :



(4) Click the [Next>] button.

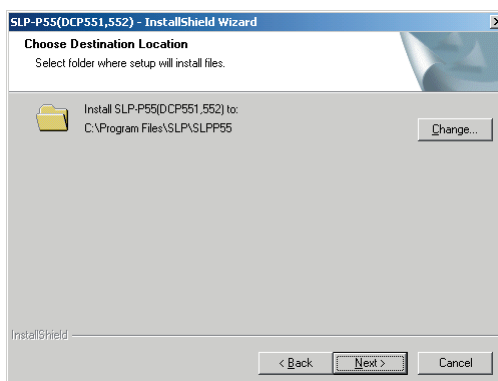
>>The following screen appears :



(5) If you agree to the software license agreement and wish to install the loader, select the [I accept the terms of the license agreement] button, and click the [Next>] button.

If you abort the installation, select the [I do not accept the terms of the license agreement] button.

>>When clicking the [I accept the terms of the license agreement] button, and click the [Next>] button, the following screen appears :

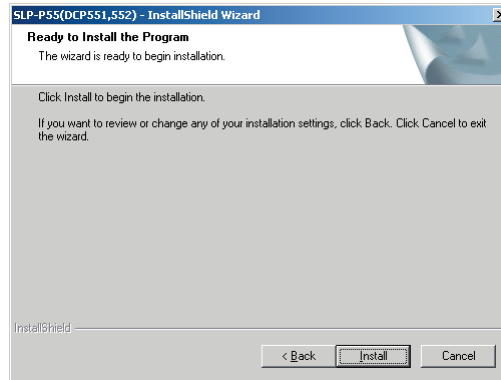


 **Note**

- To change the installation destination directory, click [Change...].

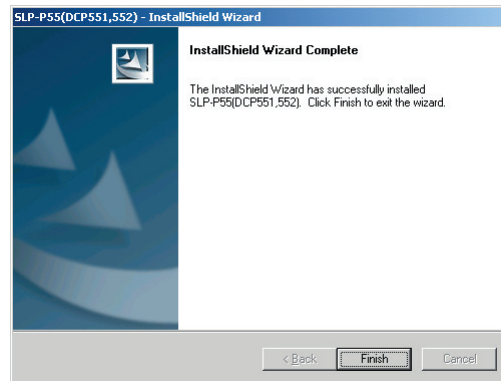
(6) Click the [Next>] button.

>>The following screen appears :



(7) Click the [Install] button.

>>The following screen appears :



(8) Click the [Finish] button.

>>When the installation is completed successfully, the screen will return to the Windows screen.

## ■ Installing the USB loader cable device driver

A device driver must be installed before using the USB loader cable.  
Follow the procedure below to install the device driver.

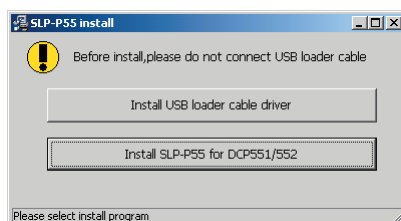
### ● Installing the device driver

#### ! Handling Precautions

- Be sure to follow the procedure below when installing the device driver. The USB cable may not be recognized if the procedure is not followed. If the cable is not recognized, uninstall the driver and then install it again.
- Administrator privileges on the computer are required for driver installation. Installation should be done by the administrator or by a user who belongs to the administrator group. The USB loader cable is supported on Windows 2000/XP/Vista (32 bit type). It is not supported on 64-bit Windows XP, or on Windows 95, Windows NT, MS-DOS or PC-DOS.
- If there are multiple USB ports, connect the USB loader cable to the same port every time. If it is connected to a different port, there is a chance that driver installation may be required again.

#### 1. Put the SLP CD-ROM into the CD-ROM drive of the personal computer.

>>The installation program is then started up automatically and the following screen appears:



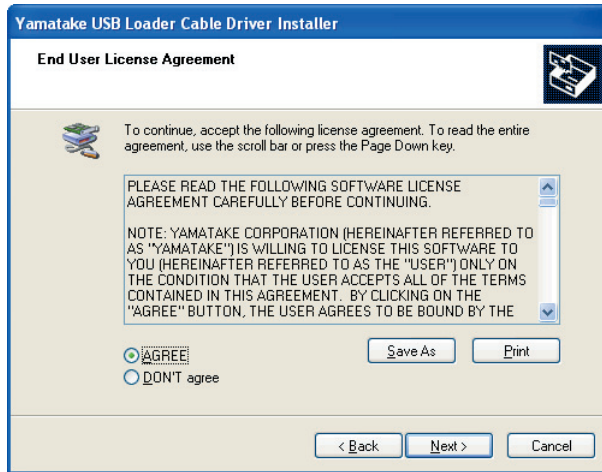
(1) Click the [Install USB loader cable driver] button.

>>The following screen appears:



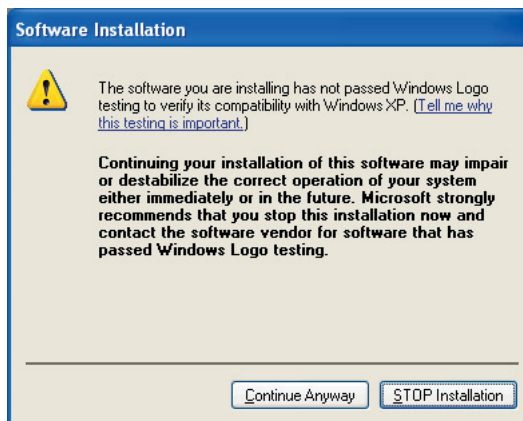
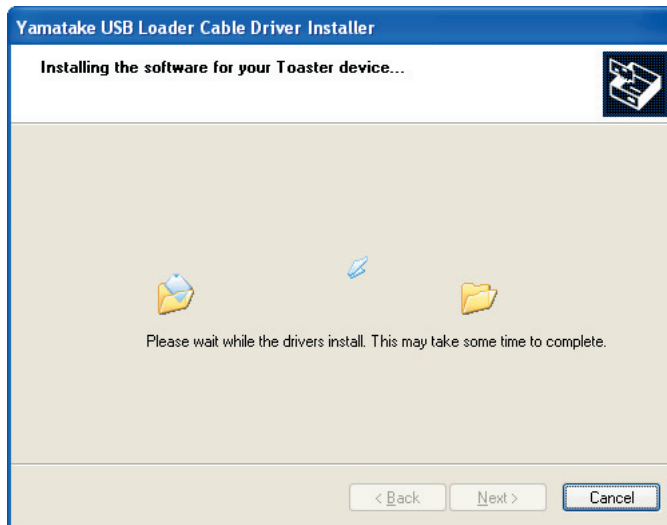
(2) Click the [Next>] button.

>>The following screen appears :



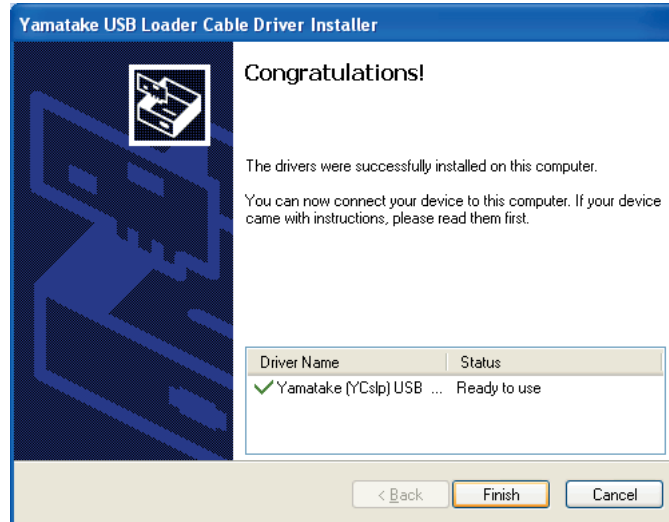
(3) Select [AGREE] and click the [Next>] button.

>>The following screen appears :



(4) Click the [Continue Anyway] button.

>>The installation program then starts up, and after it is completed, the following screen appears:



(5) Click [Finish] button to complete the installation.

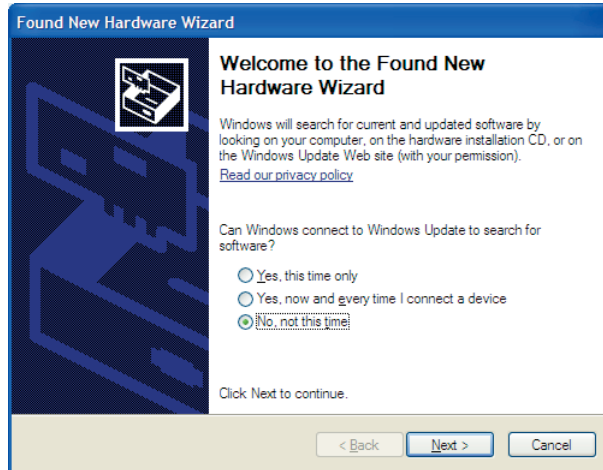
## 2. Insert the USB loader cable into the USB port.

>>When Windows recognizes the USB cable, the notification shown below appears on the task tray and the driver installation wizard appears.

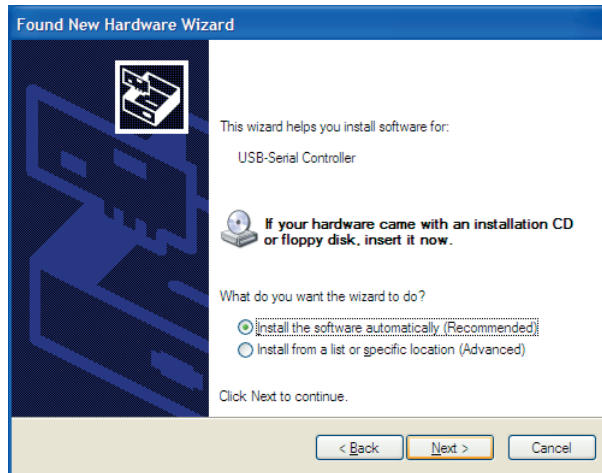


3. Install the device driver.

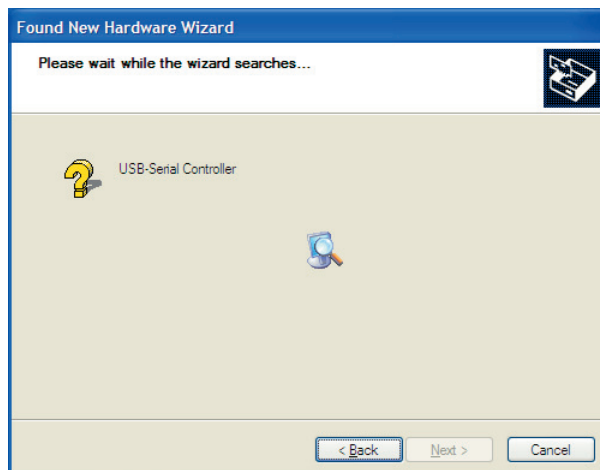
(1) Usually, when Windows recognizes the USB loader cable, the window shown below appears. (In some cases, depending on the Windows environment, it may not appear.) Select [No, not this time] and click the [Next >] button.



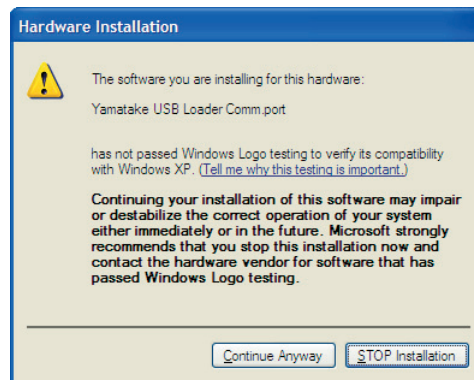
(2) For the retrieval location of the device driver to be installed, select the [No, not this time] and click the [Next >] button.



>>Retrieval of the device driver starts.

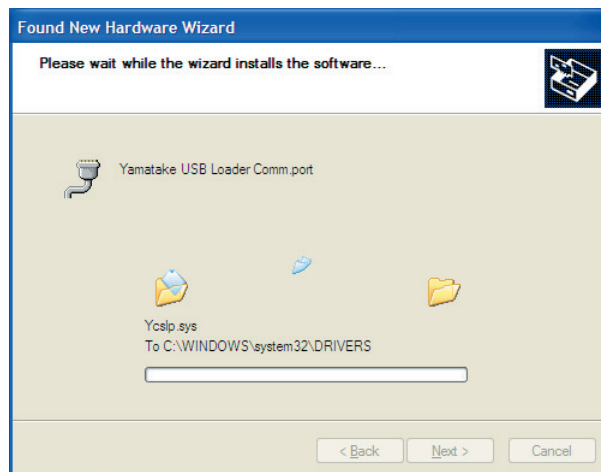


>>When the device driver is found, the following window appears:

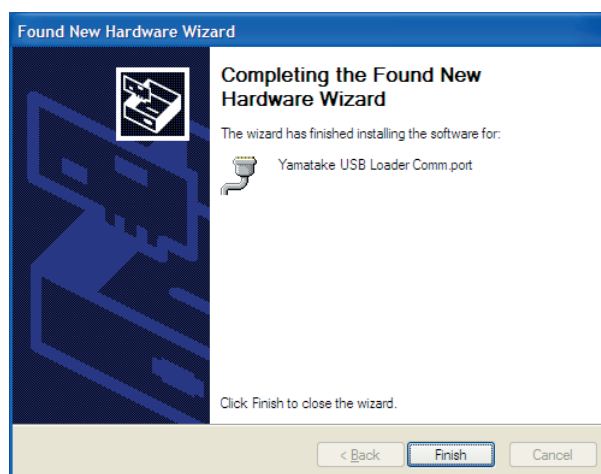


(3) Click [Continue Anyway].

>>Installation of the device driver starts

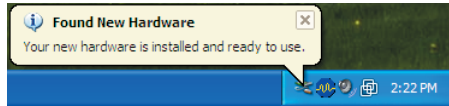


>>When the device driver installation is complete, the following window appears:

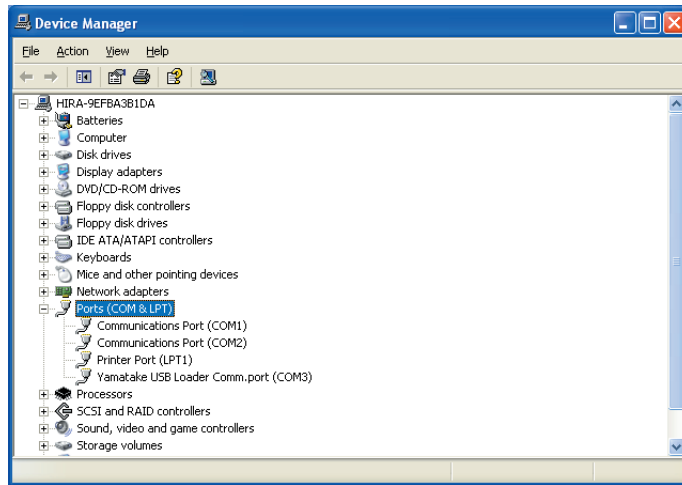


(4) Click [Finish].

>>When the installation is complete, the notification shown below appears on the task tray, and Windows now correctly recognizes the USB loader cable.



(5) Select [Control Panel] → [System] → [Hardware] → [Device Manager] (for Windows XP/2000), and find the port number for the Yamatake USB Loader Comm. from [Ports (COM & LPT)].



(6) Start the Smart Loader Program, select [Menu] → [Option], and set to the communications port number obtained in the previous step. Then press the [OK] button to complete the configuration.

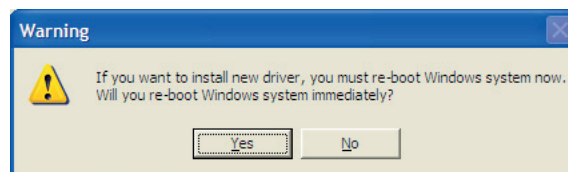
## ■ Uninstalling the device driver

### ! Handling Precautions

- Removing the driver requires restarting the computer. Close other applications first, and then uninstall the driver.
- To uninstall the driver, administrator rights are required on the computer. Uninstalling should be done by the administrator or by a user who belongs to the administrator group.

#### 1. Execute the driver removal program.

(1) Go to [Control Panel] → [Add or Remove Programs] and click on [Windows Driver Package - Yamatake (YC slp) USB (04/19/2007 1.0.0)]. Click the [Change/Remove] button.



(2) Click [OK] button.

(3) Restart the computer.







**azbil**

---

**Yamatake Corporation**  
**Advanced Automation Company**

1-12-2 Kawana, Fujisawa  
Kanagawa 251-8522 Japan

URL: <http://www.azbil.com>

*Printed on recycled paper.* (07)

*Specifications are subject to change without notice.*

Printed in Japan.  
1st Edition: Issued in Apr. 2008 (W)