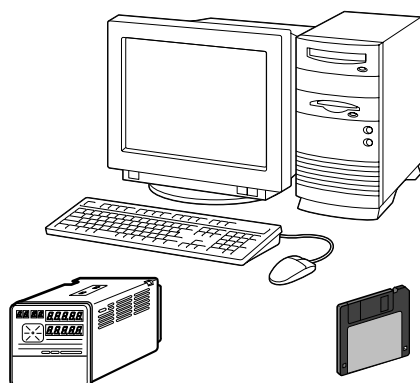


Smart Loader Package SLP-P30 for DIGITRONIK Digital Program Controller DCP31/32 User's Manual



Thank you for purchasing the SLP-P30 for DIGITRONIK Digital Program Controller DCP31/32.

This manual contains information for ensuring correct use of the SLP-P30. It also provides necessary information for installation, maintenance, and troubleshooting.

This manual should be read by those who design and maintain devices that use the SLP-P30.

Be sure to keep this manual nearby for handy reference.

Yamatake Corporation

RESTRICTIONS ON USE

This product has been designed, developed and manufactured for general-purpose application in machinery and equipment.

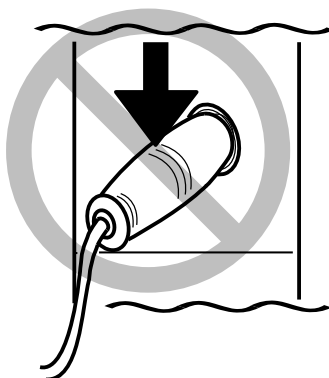
Accordingly, when used in the applications outlined below, special care should be taken to implement a fail-safe and/or redundant design concept as well as a periodic maintenance program.

- Safety devices for plant worker protection
- Start/stop control devices for transportation and material handling machines
- Aeronautical/aerospace machines
- Control devices for nuclear reactors

Never use this product in applications where human safety may be put at risk.

IMPORTANT

Do not apply strong force while connecting a loader plug. Doing so might damage the instrument.



! Handling Precautions

Application of excessive force to the loader plug might cause communication failure. If such failure happens, reconnect the loader plug correctly.

REQUEST

Ensure that this user's manual is handed over to the user before the product is used.

Copying or duplicating this user's manual in part or in whole is forbidden. The information and specifications in this user's manual are subject to change without notice.

Considerable effort has been made to ensure that this user's manual is free from inaccuracies and omissions. If you should find any inaccuracies or omissions, please contact Yamatake Corporation.

In no event is Yamatake Corporation liable to anyone for any indirect, special or consequential damages as a result of using this product.

©2004 Yamatake Corporation ALL RIGHTS RESERVED

DIGITRONIK® is a registered trademark of Yamatake Corporation.

Other company names and product names listed in this manual are registered trademarks or trademarks of respective companies.



Unpacking

Check the following items when removing the SLP-P30 from its package:

1. Check the model No. to make sure that you have received the product which you ordered.
2. Check the SLP-P30 for any apparent physical damage.
3. Check the contents of the package against the Package List to make sure that all accessories are included in the package.

After unpacking, handle the SLP-P30 and its accessories with care to prevent damage or loss of parts.

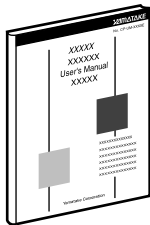
If an inconsistency is found or the package contents are not in order contact your dealer, immediately.

Name	Model No.	Q'ty	Remarks
System disk 	SLP-P30J20	1	Floppy disk 3.5 inch disk (1.44MB)
Dedicated cable	-	1	-
User's Manual 	CP-UM-1759/E	1	This manual. This manual is written in both Japanese and English.

The Role of This Manual

The 4 manuals described below are available for the DCP31/32. Read them as necessary for your specific requirements.

If a manual you require is not available, contact Yamatake Corporation or your dealer.

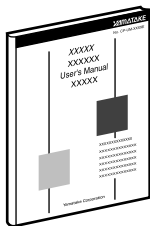


DIGITRONIK Digital Program Controller DCP31 User's Manual

Manual No. CP-UM-1757E

This manual is provided with the DCP31 (single-loop model). It is required reading for those in charge of designing, producing and maintaining control systems incorporating the DCP31, and for those using the DCP31 in other applications.

It describes mounting onto control panels, wiring, parameter setup, program setup, operation methods, maintenance and inspection, troubleshooting and specifications.

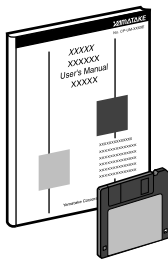


DIGITRONIK Digital Program Controller DCP32 User's Manual

Manual No. CP-SP-1042E

This manual is provided with the DCP32 (double-loop model). It is required reading for those in charge of designing, producing and maintaining control systems incorporating the DCP32, and for those using the DCP32 in other applications.

It describes mounting onto control panels, wiring, parameter setup, program setup, operation methods, maintenance and inspection, troubleshooting and specifications.



Smart Loader Package SLP-P30 User's Manual for DCP31/32

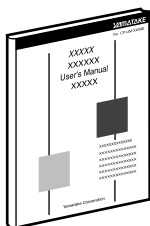
Manual No. CP-UM-1759/E

This manual. This manual is written in both Japanese and English.

This manual is supplied with the Smart Loader Package SLP-P30. The manual describes the software used to make various settings for the DCP31/32 using a personal computer.

Personnel in charge of design or configuration of a system using the DCP31/32 must thoroughly read this manual.

The manual describes software installation, operation of the personal computer, various functions, and setup procedures.



DIGITRONIK CPL Communication DCP31/32 User's Manual

Manual No. CP-SP-1066E

This manual is required reading for those using the CPL communications functions of the DCP31/32.

This manual outlines CPL communications, wiring, communications procedures and DCP31/32 communications data, troubleshooting, and communications specifications.

Organization of This User's Manual

This manual is organized as follows:

Chapter 1. INTRODUCTION

Be sure to read this chapter before you start using the Smart Loader Package. The chapter describes the required operating environment for the personal computer and briefly introduces the features of the Smart Loader Package.

Chapter 2. INSTALLATION AND BASIC OPERATION

This chapter describes how to install, start and quit the SLP-P30, and summarizes its functions, screen configurations and basic operations.

Chapter 3. METHODS OF OPERATION

This chapter describes setup operations for environment, file operations, communications with the DCP31/32 and data.

Chapter 4. TROUBLESHOOTING

This chapter describes error messages and remedies for problems that may occur.

Conventions Used in This Manual

The following conventions are used in this manual:



Handling Precautions:

Handling Precautions indicate items that the user should pay attention to when handling the SLP-P30.



Note:

Notes indicate useful information that the user might benefit by knowing.



:

This indicates the item or page that the user is requested to refer to.

(1), (2), (3):

The numbers within the parentheses indicate steps in a sequence or indicate corresponding parts in an explanation.

[OK] button:

Indicates a selection button on a personal computer screen.

[File]:

Indicates messages and menus displayed on the personal computer.

[File] → [New]:

Indicates a sequence of selections on a personal computer. Select [File] first and then select [New].

>>:

Indicates the result of an operation, details displayed on the personal computer or other devices, or the state of a device after an operation.

[Ctrl] key:

Indicates keys on the keyboard.

[x] key

[Ctrl]+[x] keys: Indicates the operation of pressing the [x] key with the [Ctrl] key on the keyboard held down.

Contents

Unpacking	
The Role of This Manual	
Organization of This User's Manual	
Conventions Used in This Manual	

Chapter 1. INTRODUCTION

1-1 Overview	E1
1-2 System Operating Environment	E2
■ Hardware	E2
■ Hardware configuration	E3
■ Personal computer used for confirmation of operating environment ..	E3

Chapter 2. INSTALLATION AND BASIC OPERATION

2-1 Installation, Starting and Quitting the Software Package	E4
■ Installation	E4
■ Starting the SLP	E8
■ Quitting the SLP	E9
2-2 Description of Functions	E10
■ SLP functions	E10
2-3 Screen Configuration	E11
■ SLP screen configuration	E11
2-4 Menu Configuration List	E12

Chapter 3. METHODS OF OPERATION

3-1 Type Setup and Environment Setup	E13
■ Type setup	E13
■ Environment setup	E15
3-2 File Operations	E16
■ Making new files	E16
■ Opening existing files	E16
■ Overwriting and saving files	E16
■ Saving files with a new name	E17
■ Outputting CSV format files	E17
■ Outputting HTML format files	E17
3-3 Communications with the DCP	E18
■ Communication from the DCP to the SLP (reading from the DCP)	E18
■ Communication from the SLP to the DCP (writing to the DCP)	E18
3-4 Setting up Data	E19
■ Selecting setup items	E19
■ Entering numerical data	E19

3-5	Editing Program Patterns	E21
■	Editing segments	E21
■	Copying and pasting program patterns	E23
■	Changing tags	E23
■	ASCII code table	E24
3-6	Displaying Graphs	E25
■	Displaying program pattern graphs	E25
■	Displaying input line graphs	E25
3-7	Data Check.....	E26
■	Checking the high and low limits of all data	E26
■	Displaying items with abnormal values	E26

Chapter 4. TROUBLESHOOTING

4-1	Error Messages	E27
■	Communications error messages	E27
■	File error messages	E27
■	Startup error messages	E28

Chapter 1. INTRODUCTION

1 - 1 Overview

The SLP-P30 (simply called “SLP” from here on) is an engineering tool for the DIGITRONIK Digital Program Controller DCP31/32 (simply called “DCP” from here on).

The SLP runs on Windows98/Me/2000/XP (simply called “Windows” from here on) on a personal computer.

The SLP has the following functions:

- (1) Program pattern editing and parameter editing
- (2) Data communication (program patterns, writing/reading of parameters)
- (3) File management (program patterns, writing/reading of parameters)

1 - 2 System Operating Environment

The following system environment is required for using the loader:

■ Hardware

Item	Description	
Personal Computer	Target model	PC/AT compatibles with a Pentium chip or higher
	Memory	32 MB or more
	Operating system	Windows98/Me/2000/XP
Peripheral Devices	Display	800 x 600 pixels or more, 16-bit color or more
	Serial port*	9-pin serial port, 1 channel or more
	Hard disk drive	Hard disk with at least 40 MB of free space
	Floppy disk drive	At least 1 drive capable of reading the floppy disk in the product package (1.44MB format)
	Pointing device	Windows-compatible mouse or equivalent device

* Serial port

A personal computer with a built-in 9-pin serial port is recommended.

If your personal computer does not have any serial port, you may use any of the extension adapters listed below to connect the loader cable. However, note that the operation may become unstable depending on the personal computer environment.

- A special interface (port replicator)

This is an adapter specially designed for each personal computer model.

- CF card adapter

The CF232, manufactured by Elan Digital systems.

URL: <http://www.elandigitalsystems.com/interface/cf232.php>

Operation has been confirmed on an IBM ThinkPad A31.

- USB adapter

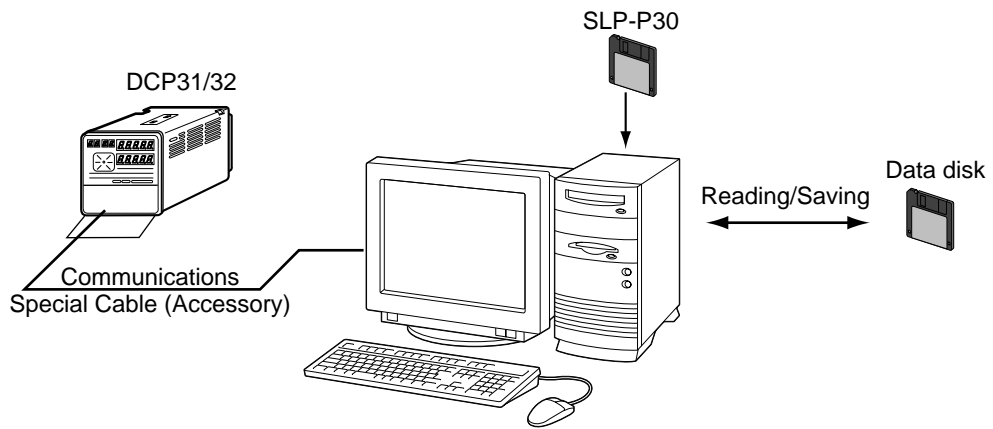
The USB-RSAQ3, manufactured by I/O Data.

URL: [http://www.iodata.jp/prod/mobile/serial/2004/usb-rsaq3/\(Japanese\)](http://www.iodata.jp/prod/mobile/serial/2004/usb-rsaq3/(Japanese))

Operation has been confirmed on an IBM ThinkPad A31.

When connecting the USB cable, check the port number, which may vary depending on the USB cable connection position.

■ **Hardware configuration**



■ **Personal computer used for confirmation of operating environment**

Manufacturer	Model No.
Dell	OptiPlex G1

Chapter 2. INSTALLATION AND BASIC OPERATION

2 - 1 Installation, Starting and Quitting the Software Package

■ Installation

Install the SLP on the hard disk of a personal computer.

Keep the system disk that you purchased as a backup.

This section describes how to install the SLP on a personal computer.

! Handling Precautions

- This disk does not contain the PC operating system, and you cannot use it without an operating system.
- The installation program may malfunction if you start it while another application is running. Close resident applications before starting up the installation program. The SLP sometimes cannot be started depending on the combination of other applications and drivers.

For details on Windows and personal computer settings, refer to their user's manuals.

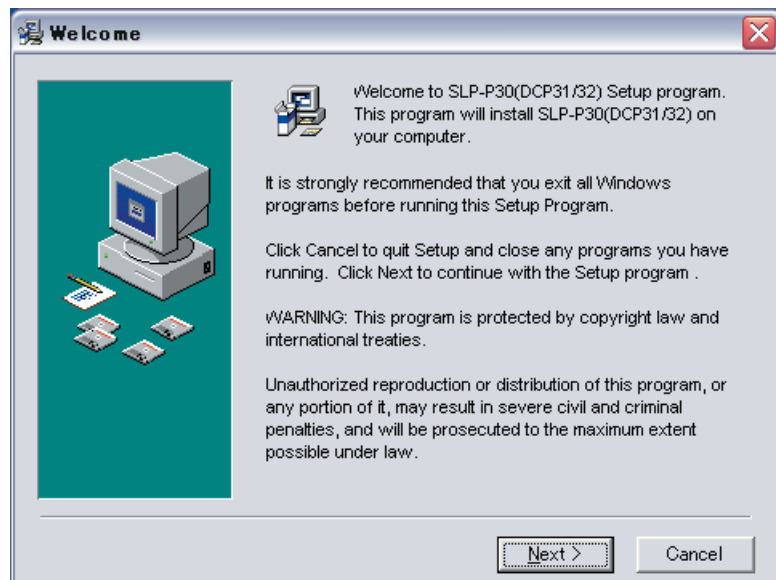
● Installing the SLP

(1) Click the [Start] button at the bottom of the screen, and then click [Run...].

(2) Enter "A:\setup" (without the quotes).

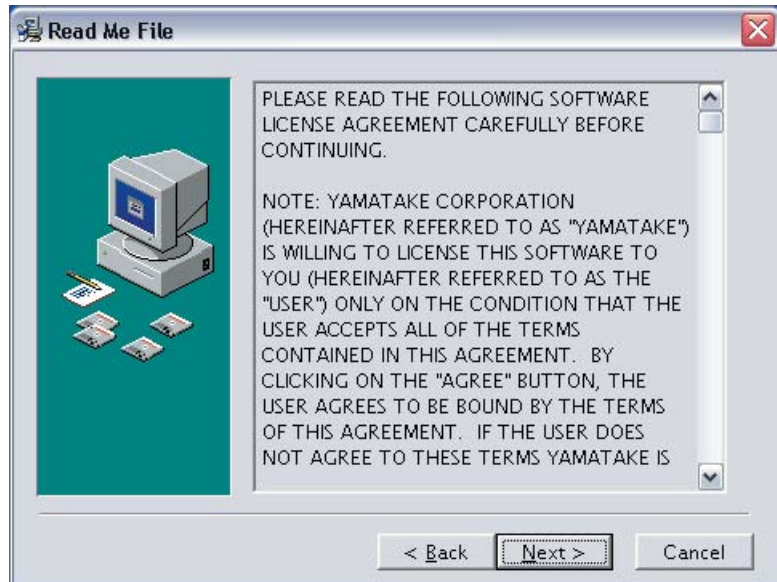
(3) Insert the disk provided with the software package into the disk drive, and click the [OK] button.

>>The installation program is then started up automatically and the following screen appears:



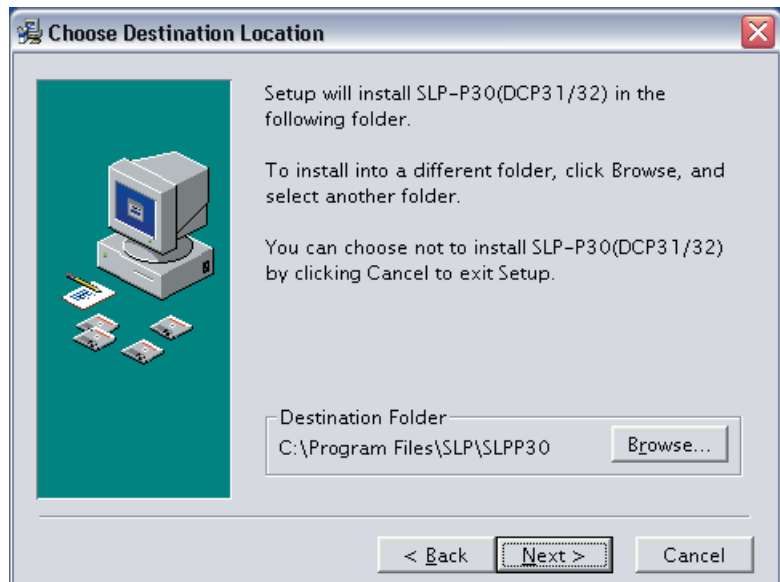
(4) Click the [Next >] button.

>>The following screen appears:



(5) If you agree to the software license agreement and wish to install the loader, click the [Next >] button. If you want to abort the installation, click the [Cancel] button.

>>After clicking the [Next >] button, the following screen appears:

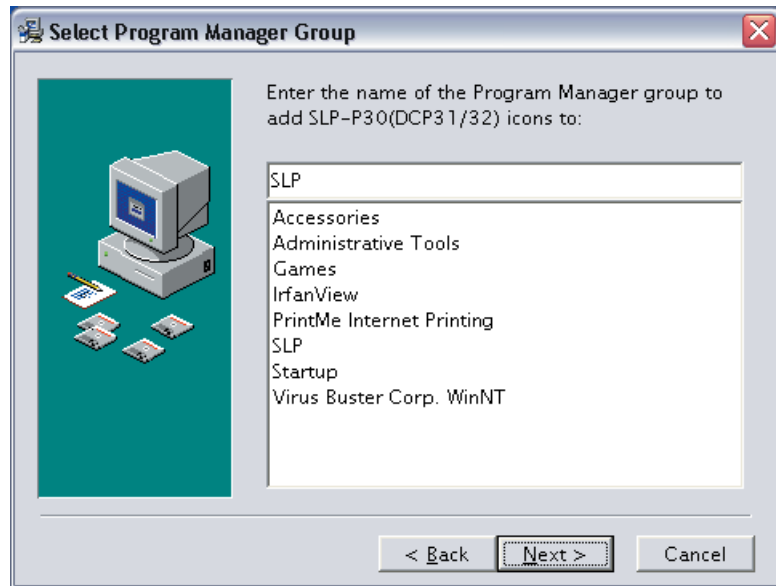


Note

- To change the installation destination directory, click the [Browse...] button.

(6) Click the [Next >] button.

>>The following screen appears:

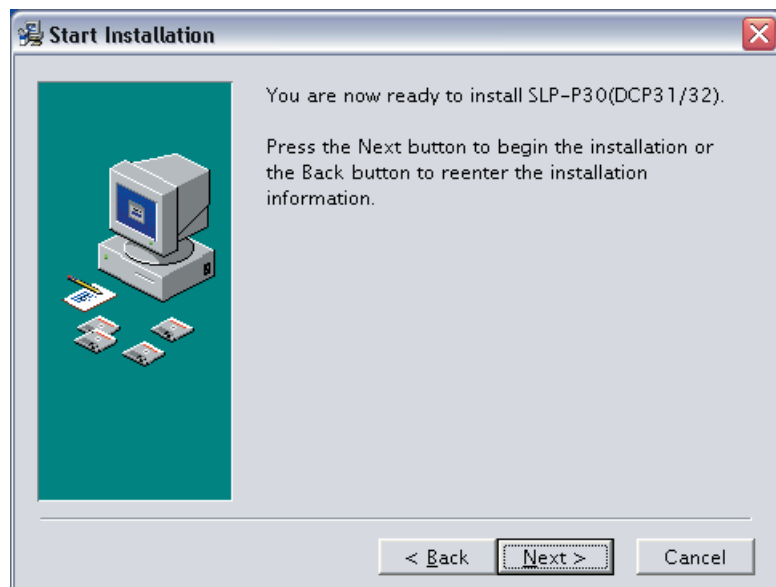


Note

- To change the group, enter the new group name.

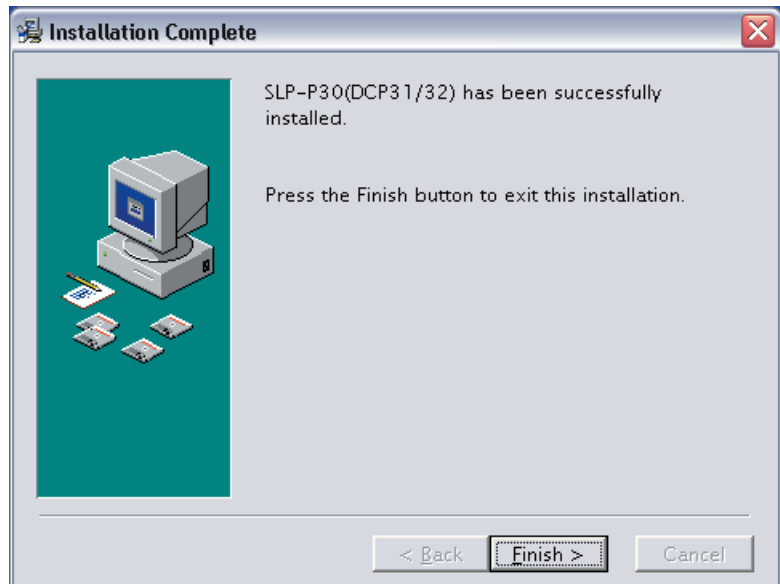
(7) Click the [Next >] button.

>>The following screen appears:



(8) Click the [Next >] button.

>>The following screen appears:



(9) Click the [Finish >] button.

>>When the installation is completed successfully, the display will return to the Windows desktop.

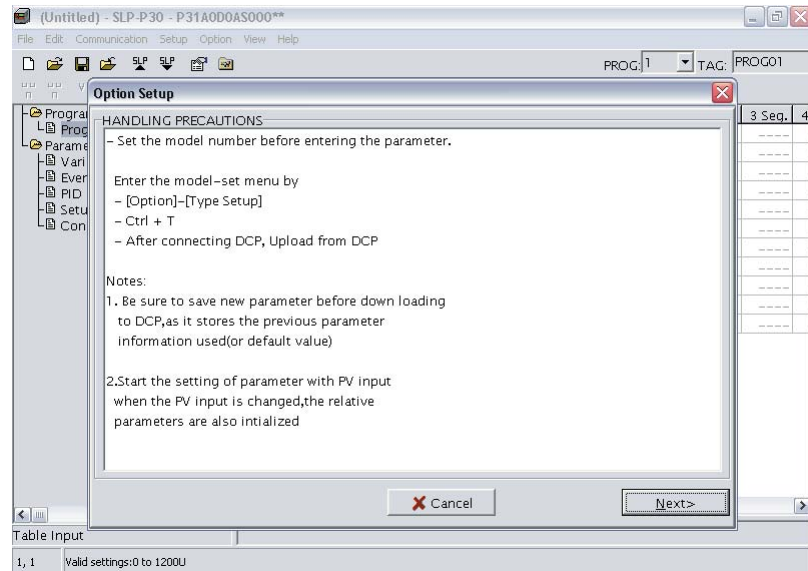
■ Starting the SLP

❗ Handling Precautions

- Before starting the SLP, quit all other applications. If you start the loader while another application is running, the SLP may not function. Also, set any power saver function, infrared communications and screen saver to OFF.
- Make sure that the Decimal Symbol setting is " ." for [Control Panel] → [Regional Settings] → [Number] command. If it has been set to some other character, the loader cannot correctly function.

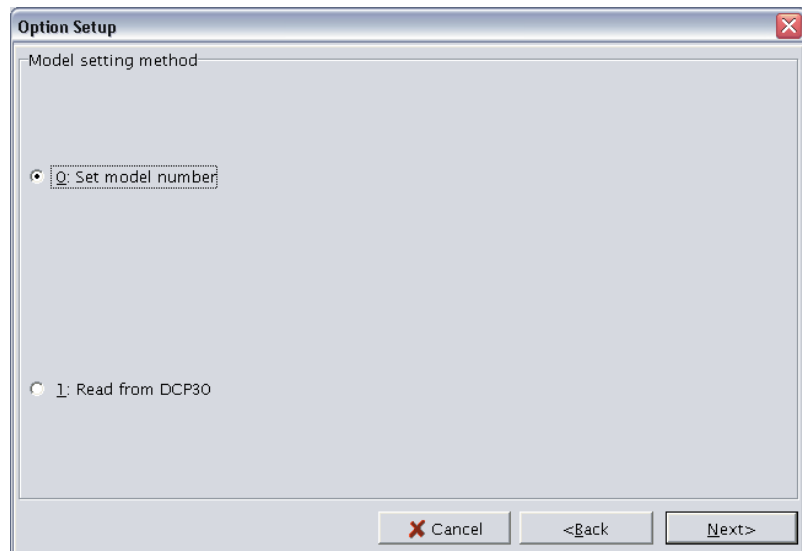
(1) Click the [Start] button at the lower portion of the screen and select [Programs] → [SLP] → [SLP-P30(DCP31,32)] command.

>>The SLP starts and the menu window is displayed, along with handling precautions.



(2) Click the [Next >] button.

>>The model setting method screen appears:



(3) Select either method on the model setting method screen and click the [Next>] button.

>>If [0: Set model number] is selected, the basic model screen basic model No. will appear.

If [1: Read from DCP30] is selected, the communication range selection screen Select will appear.

For more details, refer to the sections listed below.

When the basic model screen is displayed:

3-1 Type Setup and Environment Setup (see page E13).


When the communication range selection screen is displayed:

3-3 Communications with the DCP (see page E18).

 **Note**

- For details on the operating system or the mouse you are using, refer to the user's manual provided with Windows or with your personal computer.

■ Quitting the SLP

(1) Click the  icon at the top right of the screen. You can also quit by selecting [Menu] → [Quit] command.

>>The following screen appears:



(2) Click the [OK] button.

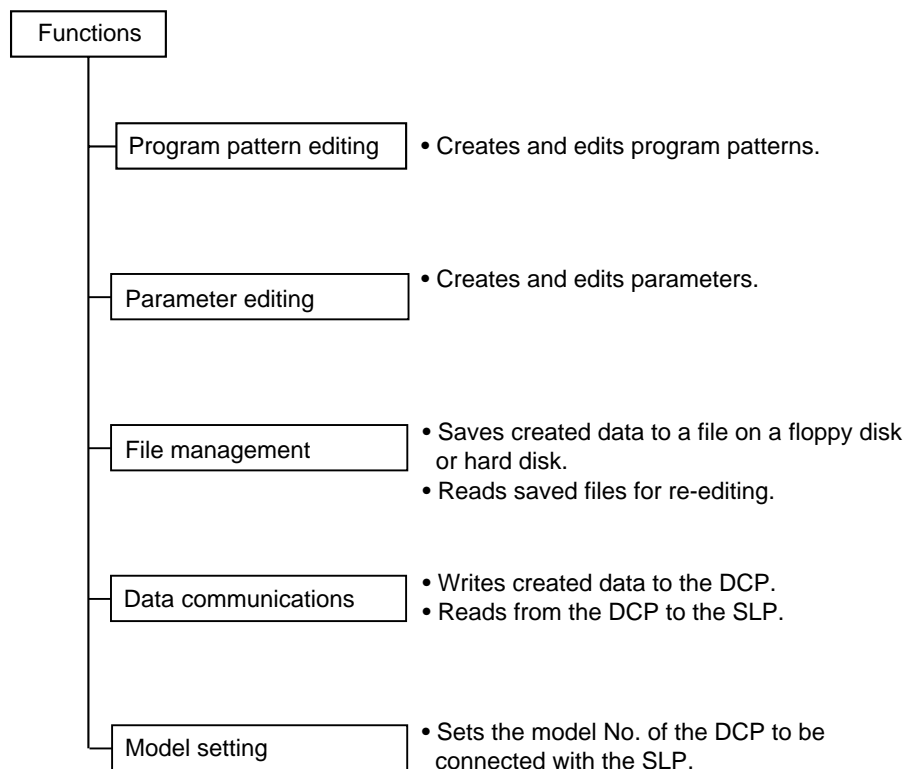
2 - 2 Description of Functions

■ SLP functions

The SLP provides the following functions for configuring DCP operation:

- Program pattern editing
- Parameter editing
- File management
- Data communications
- Model setting

The figure below shows what these functions do.



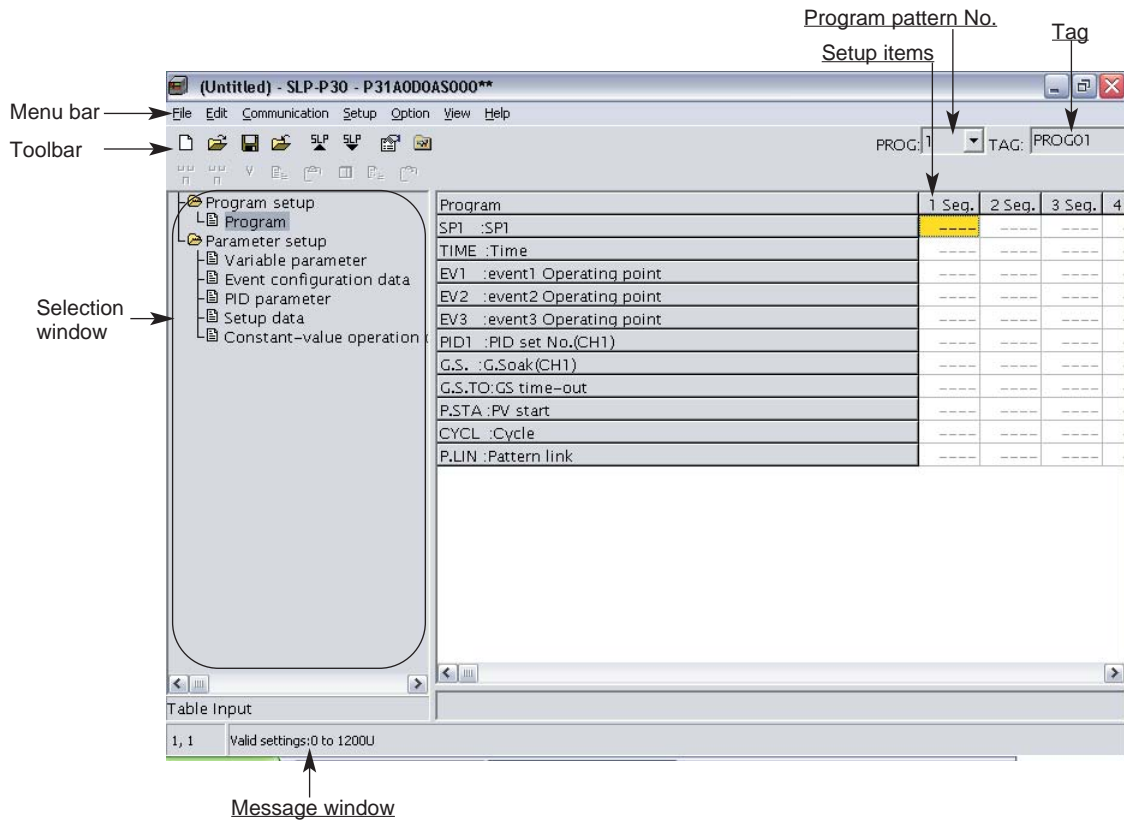
Note

- “File” refers to data for one DCP. Each file comprises the various parameter settings and the model number information.

2 - 3 Screen Configuration

■ SLP screen configuration

- Basic SLP screen















- Dialog box displayed when [Help] → [Version(A)] command is selected.



2 - 4

Menu Configuration List


Menu	Icon	Sub Menu 1	Sub Menu 2	Description	Shortcut Keys
File		New	-	Creates new data.	[Ctrl]+[n]
		Open	-	Opens existing data.	[Ctrl]+[o]
		Save	-	Saves the active data.	[Ctrl]+[s]
		Save As	-	Saves the active data with a new name.	[Ctrl]+[a]
	-	CSV Out (X)	-	Saves the active data in CSV format.	-
	-	HTML Out (H)	-	Saves the active data in HTML format.	-
	-	Quit	-	Quits the application.	[Ctrl]+[q]
Edit	-	Data Check	-	Checks all values.	-
		Insert Segment	New Segment	Inserts a new segment.	-
			Segment Copy	Inserts the copied segment data.	-
		Cut Segment (T)	-	Copies the selected segment data and deletes it.	[Ctrl]+[x]
		Copy Segment	-	Copies the selected segment data.	[Ctrl]+[c]
		Paste Segment	-	Overwrites (pastes) the copied segment data onto the selected segment.	[Ctrl]+[v]
		Clear (A)	-	Initializes the selected data.	-
		Copy Pattern (Y)	-	Copies the selected pattern data.	-
		Paste Pattern (S)	-	Overwrites (pastes) the copied pattern data onto the selected pattern.	-
Communication		Read (DCP30 -> SLP)	-	Reads the device data.	[Ctrl]+[r]
		Write (SLP -> DCP30)	-	Writes the data to the device.	[Ctrl]+[w]
Setup -	-	Program setup (A)	Program	Displays the program setup.	[Ctrl]+[Shift]+[a]
	-	Parameter setup (B)	Variable parameter	Displays the variable parameter.	[Ctrl]+[Shift]+[b]
			Variable parameter2	Displays the variable parameter 2.	[Ctrl]+[Shift]+[c]
			Event configuration data	Displays the event configuration data.	[Ctrl]+[Shift]+[d]
			PID parameter	Displays the PID parameter.	[Ctrl]+[Shift]+[e]
			PID parameter2	Displays PID parameter 2.	[Ctrl]+[Shift]+[f]
			Setup data	Displays the setup data.	[Ctrl]+[Shift]+[g]
			Table data	Displays the table data.	[Ctrl]+[Shift]+[h]
	Constant-value operation data	Displays the constant-value operation data.	[Ctrl]+[Shift]+[i]		
Option		Type setup	-	Changes the type setup.	[Ctrl]+[t]
		Environment setup	-	Changes the environment setup.	[Ctrl]+[e]
View	-	Pattern Graph	-	Displays the pattern graph.	-
	-	Table Graph	-	Displays the table graph.	-
Help	-	Version (A)	-	Displays the version information.	-

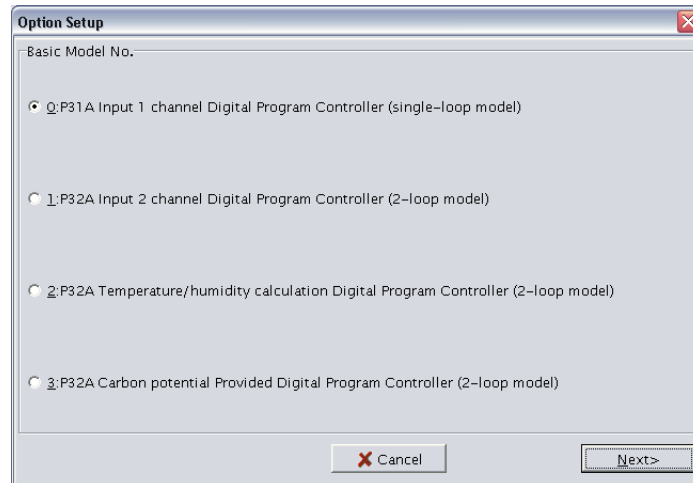
Chapter 3. METHODS OF OPERATION

3 - 1 Type Setup and Environment Setup

■ Type setup

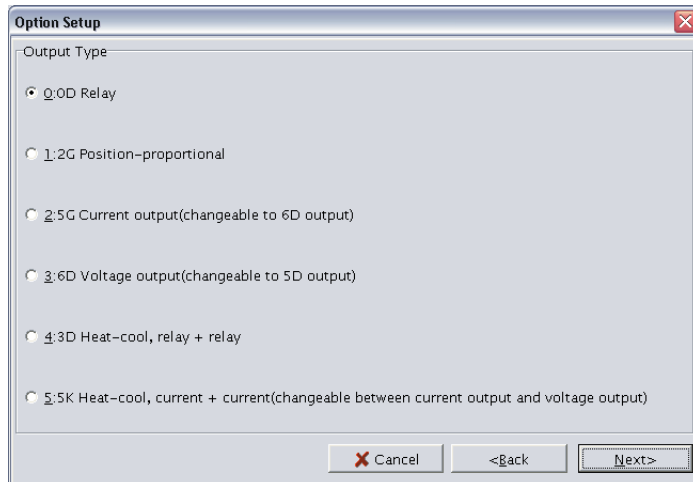
First, set the SLP type appropriate for the DCP model.

- (1) Click the  icon. This has the same result as selecting [Option] → [Type setup] command, or pressing [Ctrl] + [t] keys.
>>The type setup dialog box appears.



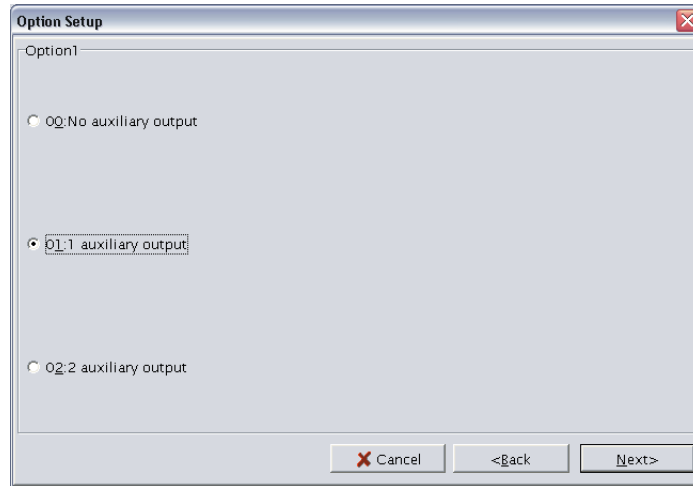
- (2) Select the DCP and click the [Next >] button.

>>The output type dialog box appears.



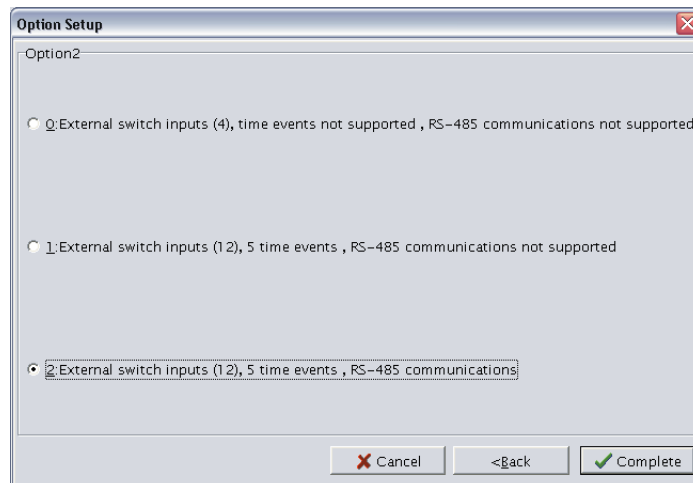
(3) Select the output type and click the [Next >] button.

>>The option 1 dialog box appears.



(4) Select option 1 and click the [Next >] button.

>>The option 2 dialog box appears.



(5) Select option 2 and click the [Complete] button.

Handling Precautions

- The type setting here is for the internal use of the loader.
Be sure to set the correct DCP type.

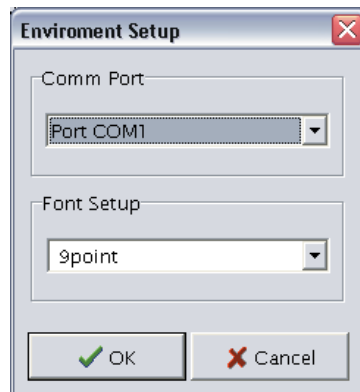
■ Environment setup

Set the communications port and font on the personal computer.

(1) Click the  icon.

Alternatively, select [Option] → [Environment setup] command, or press the [Ctrl] + [e] keys.

>>The environment setup dialog box appears.



(2) Select the communications port.

(3) Select the font size.

(4) Click the [ OK] button.


Handling Precautions

- Normally, use "Port COM1."

Even if another communications port can be selected, it sometimes cannot be used, depending on its configuration.

3 - 2 File Operations

■ Making new files


(1) Click the  icon, select the [File] → [New] command, or press the [Ctrl] + [n] keys.

>>The New dialog box appears.

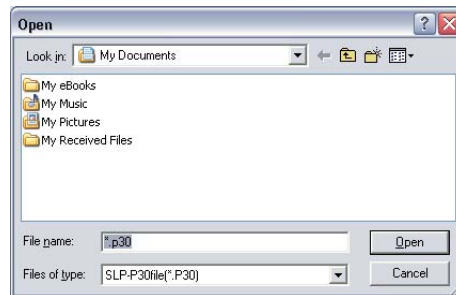
(2) Click [OK] button.

>>A new file opens.

■ Opening existing files

(1) Click the  icon, select the [File] → [Open] command, or press the [Ctrl] + [o] keys.

>>The open dialog box appears.




(2) Select the folder (directory) from the [Look in:] drop-down menu.

(3) Click (select) the file name.

(4) Click the [Open] button.


>>The file you selected opens.

■ Overwriting and saving files

(1) Click the  icon, select the [File] → [Save] command, or press the [Ctrl] + [s] keys.

>>The file is overwritten and saved.

■ Saving files with a new name

- (1) Click the  icon, select the [File] → [Save As] command, or press the [Ctrl]+[a] keys.
>>The Save As dialog box appears.
- (2) Select the folder name under the [Save in:].
- (3) Enter the file name in the [File name] input box.
- (4) Click the [Save] button.
>>The file is saved under the file name that you entered.

Note

- The file is overwritten and saved if you click on (select) a file name in the File name window.

■ Outputting CSV format files

- (1) Select the [File] → [CSV Out(X)] command.
>>The CSV output dialog box appears.
- (2) Select the folder name under [Save in:].
- (3) Enter the file name at [File name].
- (4) Click the [Save] button.
>>The file is output under the file name that you entered.

Note

- The file is overwritten and saved if you click on (select) a file name in the File name window.

A CSV file is a text file delimited by commas, and can be used in Microsoft Excel or other off-the-shelf spreadsheet applications.

- When opening a CSV file using Microsoft Excel, the display format for numerical values, time and the line, is converted into the standard Microsoft Excel format.

■ Outputting HTML format files

- (1) Select the [File] → [HTML Out(H)] command.
>>The HTML output dialog box appears.
- (2) Select the folder name under [Save in:].
- (3) Enter the file name at [File name].
- (4) Click the [Save] button.
>>The file is output under the file name that you entered.


Note

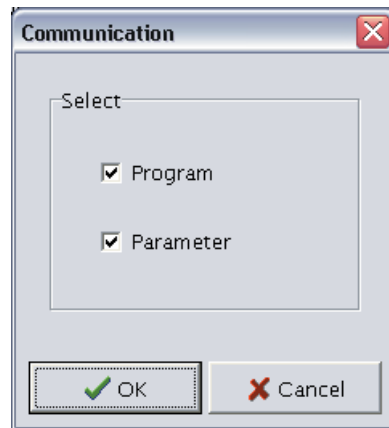
- The file is overwritten and saved if you click on (select) a file name in the File name window.
- An HTML file can be used with browsers like Microsoft Internet Explorer, like and word processors Microsoft Word.



3 - 3

Communications with the DCP




■ Communication from the DCP to the SLP (reading from the DCP)

- (1) Click the  icon, select the [Communication] → [Read (DCP30 -> SLP)] command, or press the [Ctrl]+[r] keys.
>>The communication dialog box appears.



- (2) Check the contents of the communication and click the  button.
>>The confirm dialog box appears.
- (3) Click the  button.
>>Reading from the DCP starts.

■ Communication from the SLP to the DCP (writing to the DCP)

- (1) Click the  icon, select the [Communication] → [Write (SLP -> DCP30)] command, or press the [Ctrl]+[w] keys.
>>The communication dialog box appears.
- (2) Check the contents of the communication and click the  button.
>>The confirm dialog box appears.
- (3) Click the  button.
>>Writing to the DCP starts.

Handling Precautions

- If data settings are incorrect, an error list appears and the communication does not start.
- If the main unit model does not match the settings in the loader, an error message appears, showing that the settings are for the wrong model.

3 - 4 Setting up Data

■ Selecting setup items

● Moving the highlighted section of the display with the keyboard

(1) Press the [↑], [↓], [←] or [→] key to move the highlighted section of the screen.

● Moving the highlighted section of the display with the mouse

(1) Click the section you want to move.

(2) Click the scroll bar to scroll the screen.

>>The screen cannot be scrolled beyond the topmost or bottommost rows on screen.

● Changing the active window

(1) Press the [Tab] key.

>>The screen moves to the next operation window.



Note

- Setup items are moved to according to their order on the screen.

■ Entering numerical data

● Entering numerical values

The following describes how numerical values are entered:

- To enter a numerical value, press the [0] to [9] keys on the keyboard.
- To enter a hexadecimal number, press the [0] to [9] keys or the [A] to [F] keys on the keyboard.
- To enter a decimal point, press the [.] key at the desired decimal point position.
- To enter a minus value, press the [-] key.
- To enter time data, press the [0] to [9] keys, [:] key, and [.] key on the keyboard.



Note

- To enter “2:00”, press the [2], [:], [0], and [0] keys or press the [1], [2], and [0] keys.
- When entering time in h:min or min:s format, you cannot use the [.] key. Likewise, when entering time in the 0.1s format, you cannot use the [:] key.
- To correct a wrong entry, press the [Back Space] key.
>>The current displayed value is deleted.
- To cancel the currently entered numerical value, press the [Esc] key.
>>The original value is redisplayed.

● Entering values for setup items

Use the [0] to [9] keys on the keyboard to enter values.

- (1) Select the setup item to highlight it.
- (2) Enter the desired value with the [0] to [9] keys.
- (3) Press the [Enter] key. Pressing the [↑] or [↓] key gives the same result.
>>The value is set.



Note

- If you set the numerical value by pressing the [↑] or [↓] key, the highlighted section moves on the screen. If you move a setup item using the mouse, the value is not set.
- If an entered value is invalid, the original value is redisplayed. To cancel a value midway during entry, press the [Esc] key.

● Selecting and entering data

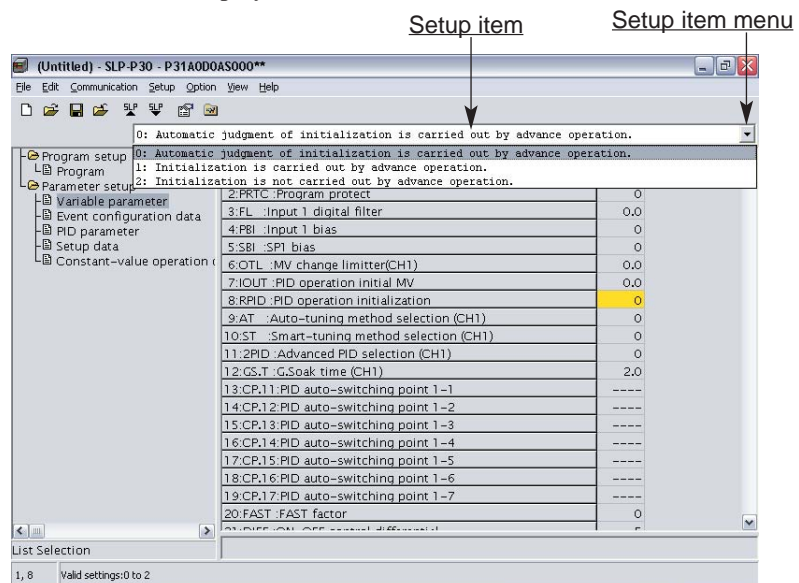


Note

- Items that can be selected and entered are automatically displayed.

- (1) Select a setup item from the drop-down menu, or press the [Tab] or [Alt]+[↓] keys.

>>Selection Item is displayed.



- (2) Click on a setup item with the mouse, or press the [↑], [↓], [←] or [→] keys, or press the [Enter] key.

>>The value is set.



Note

- When you use the mouse, the value is set at the same time that you select it with the mouse.

3 - 5 Editing Program Patterns

■ Editing segments

Before using any segment editing function, it is necessary to move the highlighted section onto a target segment.

● Inserting a new segment


(1) Click the  icon, or select the [Edit] → [Insert Segment] → [New Segment] command.

>>The confirm dialog box appears.

(2) Click the [OK] button.

>>A new segment is inserted.

● Inserting a copied or cut segment

(1) Click the  icon, or select the [Edit] → [Insert Segment] → [Segment Copy] command.

>>The confirm dialog box appears.


(2) Click the [OK] button.

>>The copied or cut segment is inserted.

! Handling Precautions

- Before inserting a copied or cut segment, it is necessary to copy or cut the segment. The same copied or cut segment may be inserted any number of times.

● Cutting a segment

(1) Click the  icon, select the [Edit] → [Cut Segment(I)] command, or press the [Ctrl] + [X] keys.

>>The confirm dialog box appears.


(2) Click the [OK] button.

>>The selected segment is cut.

! Handling Precautions

- Cut data is retained in the loader's memory. When using the cut data for another segment, refer to the following descriptions:
 - Inserting a copied or cut segment (see above)
 - Pasting a segment (see page E22)

● Copying a segment

(1) Click the  icon, select the [Edit] → [Copy Segment] command, or press the [Ctrl] + [c] keys.

>>The confirm dialog box appears.


(2) Click the [OK] button.

>>The selected segment is copied.

Handling Precautions

- The copied data is retained in the loader's memory. When using the copied data for another segment, refer to the following descriptions:
 - Inserting a copied or cut segment (see page E21)
 - Pasting a segment (see below)

● Pasting a segment

(1) Click the  icon, select the [Edit] → [Paste Segment] command, or press the [Ctrl] + [v] keys.

>>The confirm dialog box appears.


(2) Click the [OK] button.

>>The segment is pasted.

Handling Precautions

- Before pasting a segment, it is necessary to copy or cut a desired segment.
- Pasted values overwrite any values that were previously set.
- Copied or cut values can be pasted any number of times.

● Clearing data

(1) Click the  icon, or select the [Edit] → [Clear(A)] command.

>>The confirm dialog box appears.

(2) Click the [OK] button.

>>The set values are cleared.

Note

- The clear command is used to return the set values to their default values.

Handling Precautions

- When "Display OFF" is selected with setup data C68 to C71, the program items of the main unit are not displayed, but rather the program pattern window items of the SLP-P30.

■ Copying and pasting program patterns

Before using any program-pattern editing function, it is necessary to display a target program pattern.

● Copying a program pattern

(1) Click the  icon, or select the [E]dit → [C]opy Pattern(Y) command.

>>The confirm dialog box appears.

(2) Click the [O]K button.

>>The selected program pattern is then copied.

Handling Precautions

- The copied data is retained in the SLP-P30 memory. When using the copied data for another program pattern, refer to the following description:
 - Pasting a program pattern (see below)

● Pasting a program pattern

(1) Click the  icon, or select the [E]dit → [P]aste Pattern(S) command.

>>The confirm dialog box appears.

(2) Click the [O]K button.

>>The program pattern is pasted.

Handling Precautions

- Before pasting a program pattern, it is necessary to copy a pattern. When there are already values set for the program pattern, the pasted values overwrite them. Copied pattern values can be pasted any number of times.

■ Changing tags

● Changing a tag

(1) Double-click a tag text.

>>The tag is highlighted.

(2) Enter a desired tag through the keyboard.

(3) Press the [E]nter key.

Note

- If any illegal character is entered, the tag name is returned to the previous tag name. Only alphanumeric characters and symbols having an ASCII code ranging from 20 to 5FH may be used. (see table on page E24.)

■ ASCII code table

		Upper 3bits →							
		0	1	2	3	4	5	6	7
Lower 4bits ↓	0	NUL	SLE	space	0	@	P	'	p
	1	SOH	CS1	!	1	A	Q	a	q
	2	STX	DC2	"	2	B	R	b	r
	3	ETX	DC3	#	3	C	S	c	s
	4	EOT	DC4	\$	4	D	T	d	t
	5	ENQ	NAK	%	5	E	U	e	u
	6	ACK	SYN	&	6	F	V	f	v
	7	BEL	EIB	'	7	G	W	g	w
	8	BS	CAN	(8	H	X	h	x
	9	HT	EM)	9	I	Y	i	y
	A	LF	SIB	*	:	J	Z	j	z
	B	VT	ESC	+	;	K	[k	{
	C	FF	FS	,	<	L	\	l	
	D	CR	GS	-	=	M]	m	}
	E	SO	RS	.	>	N	^	n	~
	F	SI	US	/	?	O	_	o	DEL

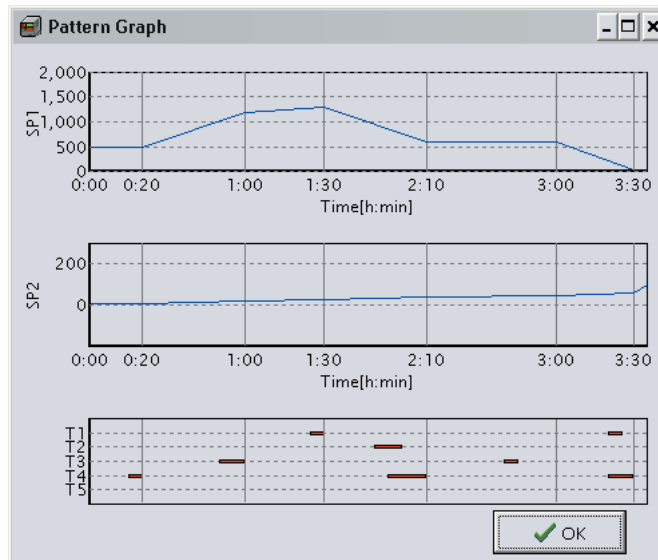
The shaded part (■) is not used.

3 - 6 Displaying Graphs

■ Displaying program pattern graphs

Select [View] → [Pattern Graph] command.

>>The pattern graph of the selected program pattern is displayed.



■ Displaying input line graphs

Select [View] → [Table Graph] command.

>>The line graph is displayed.



Note

- To select an area you want to enlarge, drag the mouse from the upper left portion to the lower right portion of the area. If you drag the mouse in the reverse direction, the enlarged graph scale is returned to its previous size.

3 - 7 Data Check

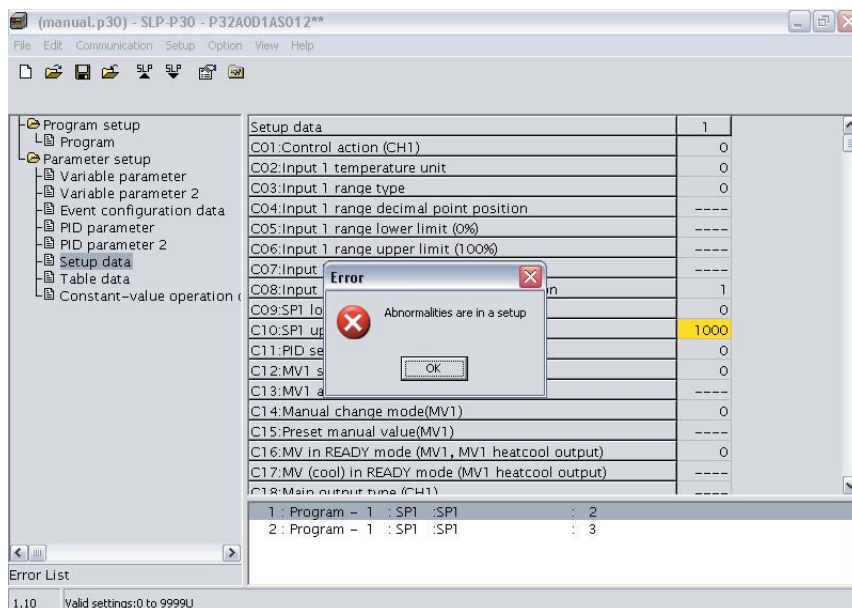
■ Checking the high and low limits of all data

Select [Edit] → [Data Check] command.

>>The data check begins.

■ Displaying items with abnormal values

If any setting error is found through the check of high and low data limits, an error dialog box appears and the erroneous items are listed.



- (1) Click the [OK] button in the error dialog box.
- (2) Double-click a setup item you want to display in the error list. The same operation can also be performed by selecting (highlighting) a setup item you want to display and pressing the [Enter] key.
>>The relevant setup item is displayed.

Note

- The format of the error list is Serial No.: Setup group name: Item name: Line No. Additionally, when the setup group is the program, the setup group name is displayed as Program - Program No.

Chapter 4. TROUBLESHOOTING

4 - 1 Error Messages

■ Communications error messages

Category	Message	Description	Remedy
Communication error	Time out.	The message could not be received within the time limit. An instrument other than DCP31/32 might be connected. The main unit might not be connected.	Check the cable connections and contacts. Use the loader while it is connected to the DCP31/32.
	Cannot open communications port.	The communication port could not be opened.	Do not run the loader and another application that uses the communication port at the same time.
	Communications error has occurred.	A system error occurred.	Try again or quit the loader and restart Windows.
DCP status error	Operating through the console or CPL communication.	Other operation is running on the main unit or via CPL communication.	After quitting the other operation, try again.
	Cannot be written since the mode is other than the READY mode.	The main unit is not READY.	Put the main unit in the READY mode and try again.
	Data, which cannot be written, exists since the mode is other than the READY mode.		After checking the mode of the main unit, try again.
	Cannot be written according to the status of the instrument.		
	Check the currently connected instrument.	Currently connected instrument is not the DCP31/32, or the DCP31/32 is not connected.	Connect the DCP31/32 and start the operation.
	Cannot support currently connected DCP31/32.	Versions of SLP-P30 or DCP31/32 are not supported.	Contact Yamatake Corporation or your dealer.

■ File error messages

Category	Message	Description	Remedy
File name error	This file name is not valid.	An invalid file name has been entered.	Enter the correct file name.
	This file cannot be found. Make sure that the correct path and file name are given.	A non-existent file name has been entered, or the directory (folder) is incorrect.	Correctly enter the name and path of an existing file.
	This file name is a reserved device name. Use a different file name.	A file name reserved as a device name has been entered.	Enter the correct file name.
Disk error	Not enough free space on disk.	There is not enough free space on disk.	Secure enough free space on disk.
	The device is not ready.	The disk is not prepared.	Prepare a disk, and repeat the operation.
	Cannot make file.	The save destination might be a CD-ROM.	Save to a different destination.
	File name too long.	The file name is too long.	Limit file names to 255 or fewer characters.
Path name error	The path does not exist. Make sure that the correct path is given.	An illegal path name has been entered.	Enter the correct path name, and repeat the operation.
File information error	Illegal file size.	File is damaged.	Damaged files cannot be used.
	Illegal file information.		Recreate the file.

■ Startup error messages

Category	Message	Description	Remedy
Loader system error	Can't start up two or more SLP-P30s at once.	An attempt was made to start up two or more SLP-P30s at once.	Click the [OK] button.

YAMATAKE

Yamatake Corporation
Advanced Automation Company

Totate International Building
2-12-19 Shibuya Shibuya-ku
Tokyo 150-8316 Japan
URL: <http://www.yamatake.com>

This has been printed on recycled paper. (02)

Specifications are subject to change without notice.

Printed in Japan.
1st Edition: Issued in Dec., 2004(W)
2nd Edition: Issued in Feb., 2005(E)