

ST3000

Smart Transmitter/Series 900

Electronic Differential Pressure Transmitter

Model STD 910/920/930/921/931/961

STC 929/940

STR 929/930

STE 929/930

STG 940/960/981

STU 940/960/980

STH 920/940/960

STA 923/940

Parts List

ST 3000 Series 900	Electronic Differential Pressure Transmitter	STD,STC,STR,STE STG,STU,STH,STA	1st Edit : 99-10-1	PL2-STJ100-9501 1 of 39
-----------------------	---	------------------------------------	--------------------	----------------------------

Case Assembly

- STD 910

STD 920

STD 930

STD 921

STD 931

STD 961

STC 929

STC 940

STR 929

STR 930

STE 929

STE 930

STG 940

STG 960

STG 981

STU 940

STU 960

STU 980

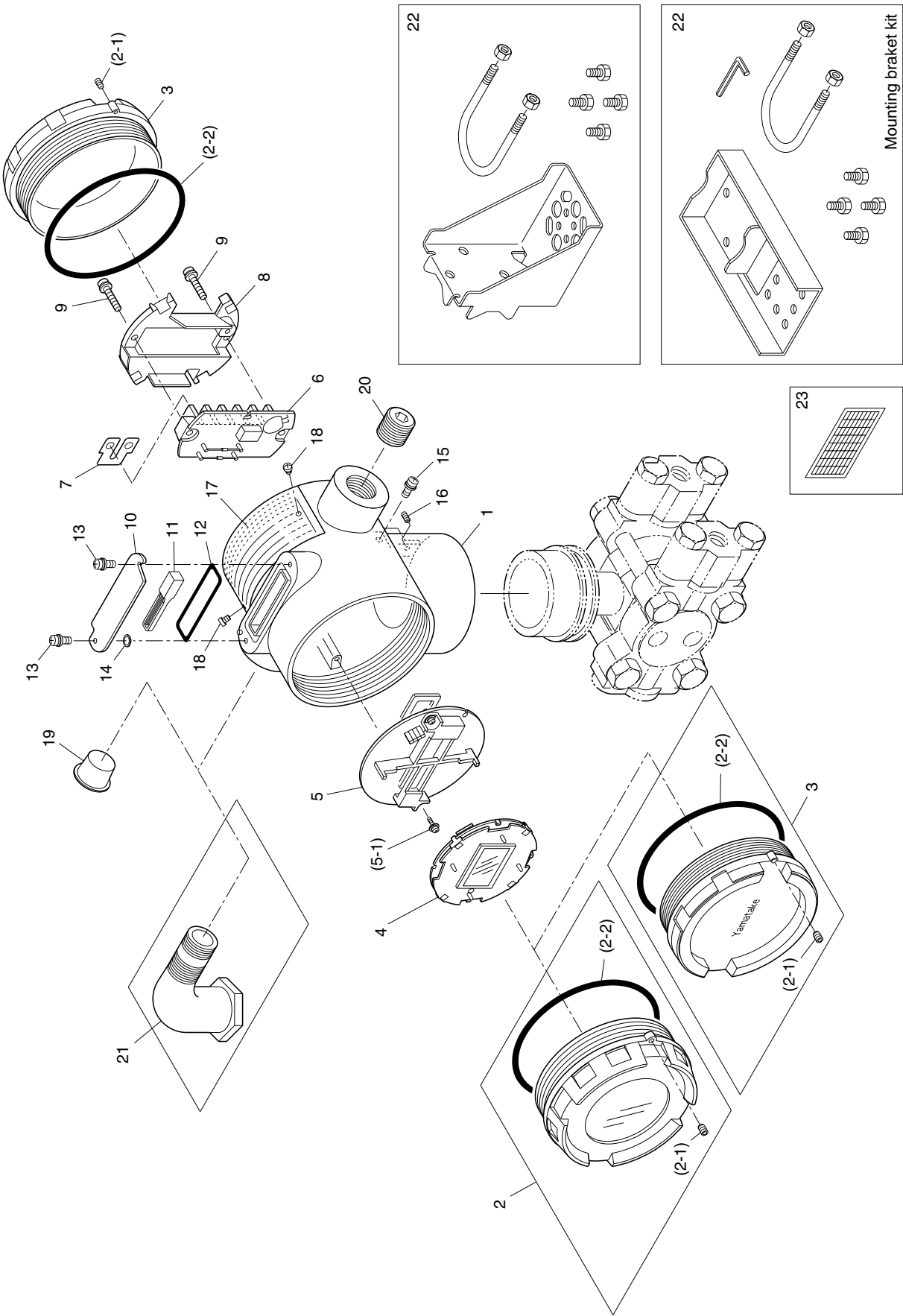
STH 920

STH 940

STH 960

STA 923

STA 940



Case Assembly

(2)Case Assembly Parts List (W/O meter body)

Key No.	Description	Quantity	Part No.
1	Housing assembly	1	See table(a)
2	Cap assembly w/glass window	1set	See table(b)
(2-1)	Screw	10	HS318203-050
(2-2)	'O' ring	1	80020935-183
3	Cap assembly w/o glass window	1set	See table(c)
4	Meter assembly	1	80370460-001
5	Electronics module	1	See table(d)
(5-1)	Screw	1	HS397203-100
6	PWB assembly terminal	1	See table(e)
7	Connecting plate (for w/o indicating meter)	1	83956028-003
8	Cover terminal	1	80277843-001
9	Screw	10	HS397204-080
10	Plate w/external zero/span adjustment	1	80277778-002
(10-1)	Plate w/o external zero/span adjustment	1	80277778-001
11	Magnet holder	1	80277779-001
12	Gasket	1	80277786-001
13	Screw assembly	10	80277581-002
14	retenaer ring	1	80235519-007
15	Screws for earth ground	10	80277581-002
16	Screw	10	HS318206-080
17	Name plate	1	See table(f)
18	Screws for Name plate	10	HS311230-040
19	Plastic plug	10	HS400006-000
20	Blind plug	1	80277971-001
21	Elbow	1	80357207-005
22	Mounting bracket kit	1set	See table(g)
23	Enginnering units label	1	80370187-001

Case Assembly

(2)Case Assembly Parts List (Continued)

Table(a) : Housing assembly(Key No.1)

Electrical conduit	Corting color	Corting spec.	Applicable Model No.	Part No.
1/2NPT	Light beige	Standard	ST□-□-00000-□-□	80277832-011
		Corrosion resisitant finish	ST□-□-00000-A-□	80277832-012
		Corrosion protective finish	ST□-□-00000-B-□	80277832-013
	Silver	Corrosion resisitant finish	ST□-□-00000-D-□	80277832-014

Table(b) : Cap assembly w/glass window(Key No.2)

	Coating color	Corting spec.	Applicable Model No.	Part No.
Cap w/glass w/ O ring	Dark beige	Standard	ST□-□-00000-*1□-□	80370008-001
		Corrosion resisitant finish	ST□-□-00000-*1A-□	80370008-002
		Corrosion protective finish	ST□-□-00000-*1B-□	80370008-003
	Silver	Corrosion resisitant finish	ST□-□-00000-*1D-□	80370008-004

*1:P,R

Table(c) : Cap assembly w/o glass window(Key No.3)

	Coating Spec.	Corting spec.	Applicable Model No.	Part No.
Cap w/o glass w/ O ring	Dark beige	Standard	ST□-□-00000-□-□	80277719-001
		Corrosion resisitant finish	ST□-□-00000-A-□	80277719-002
		Corrosion protective finish	ST□-□-00000-B-□	80277719-003
	Silver	Corrosion resisitant finish	ST□-□-00000-D-□	80277719-004

Table(d) : Electronics module(Key No.5)

	Electronics module type		Applicable Model No.	Part No.
Electronics module w/holder	Standard w/o External zero/span adjustment	Burnout down	ST□-□-00000-□-A4	80370493-111
		Burnout up	ST□-□-00000-□-A5	80370493-112
		Burnout (NA)	ST□-□-00000-□-□	80370493-113
	Standard w/ External zero/span adjustment	Burnout down	ST□-□-00000-□-A4E5	80370493-114
		Burnout up	ST□-□-00000-□-A5E5	80370493-115
		Burnout (NA)	ST□-□-00000-□-E5	80370493-116
	Intrinsical safety w/o External zero/span adjustment	Burnout down	ST□-□-00000-*1-A4*2	80370493-511
		Burnout up	ST□-□-00000-*1-A5*2	80370493-512
		Burnout (NA)	ST□-□-00000-*1-*2	80370493-513
	Intrinsical safety w/ External zero/span adjustment	Burnout down	ST□-□-00000-*1-A4*2E5	80370493-514
		Burnout up	ST□-□-00000-*1-A5*2E5	80370493-515
		Burnout (NA)	ST□-□-00000-*1-*2E5	80370493-516

*1:4,5 or *2:C2

Table(e) : Terminal assembly(Key No.6)

	Options	Applicable Model No.	Part No.
Terminal assembly	w/o lightening arrester	ST□-□-00000-□-□	80277960-001
	w/ lightening arrester	ST□-□-00000-L-□	80277960-003

ST 3000 Series 900	Electronic Differential Pressure Transmitter	STD,STC,STR,STE STG,STU,STH,STA	1st Edit : 99-10-1	PL2-STJ100-9501 4 of 39
-----------------------	---	------------------------------------	--------------------	----------------------------

Case Assembly

(2)Case Assembly Parts List (Continued)

Table(f) : Name plate(Key No.17)

	Name Plate Type	Applicable Model No.	Part No.
Name Plate	None	ST□-□-00000-□-□	80277851-003
	Explosion-proof for FM	ST□-□-00000-3-□	80277851-103
	Intrinsical safety for FM	ST□-□-00000-4-□	80277851-203
	Explosion-proof/ Intrinsical safety for FM	ST□-□-00000-5-□	80277851-503
	Explosion-proof for NEPSI	ST□-□-00000-□-C1	80277851-303
	Intrinsical safety for NEPSI	ST□-□-00000-□-C2	80277851-403

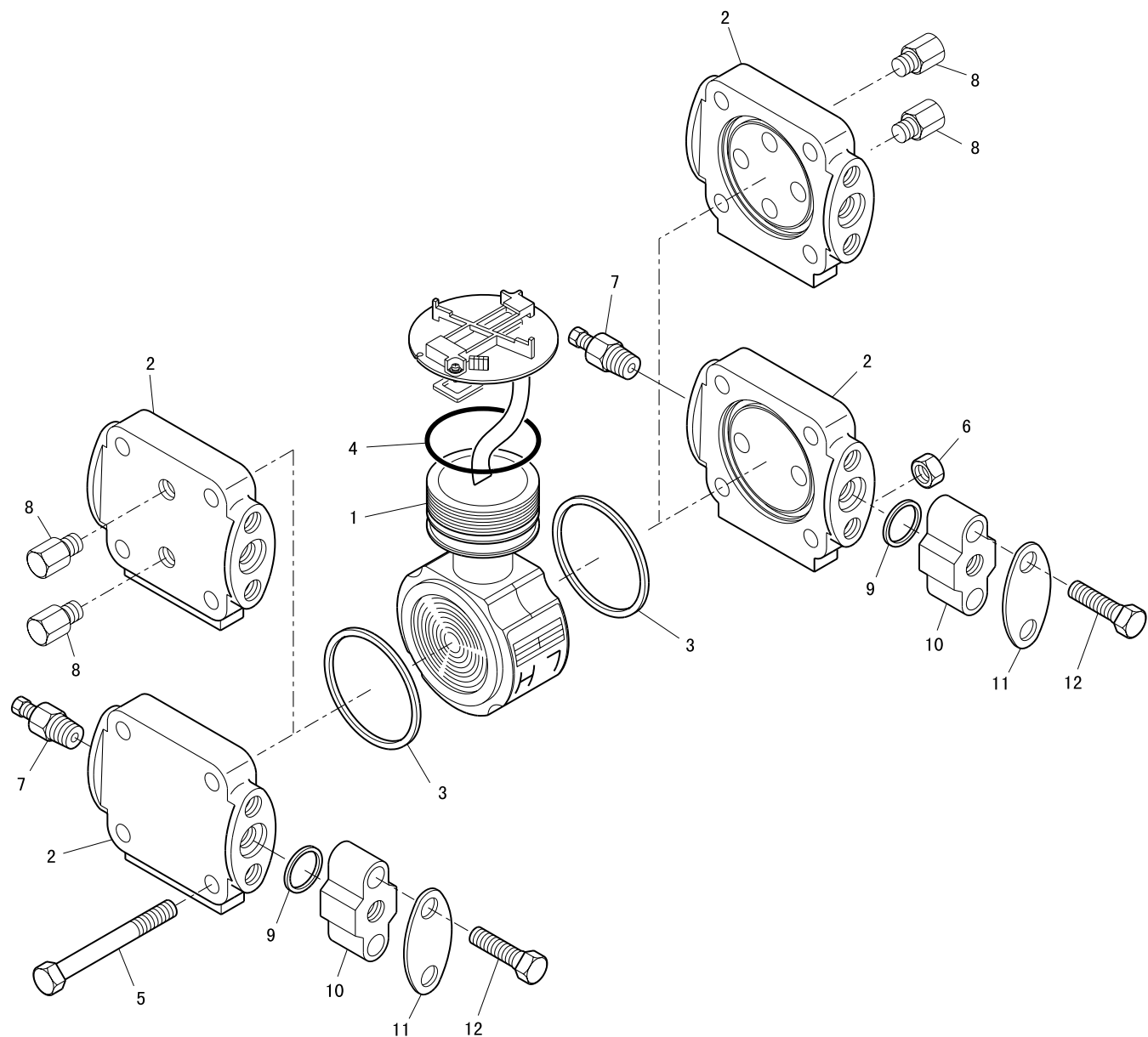
Table(g) : Mounting bracket kit(Key No.22)

Type	Applicable Model No.	Material/Applications	Part No.
Non bracket	STC	N.A	
Carbon steel Angle type	STD910	SUS316	80279919-010
	STD920/930	SUS316/HastelloyC	80279919-010
	STD960	SUS316	80279919-010
	STG940/960	SUS316/HastelloyC	80279919-010
	STA923/940	SUS316	80279919-010
Carbon steel Box type	STD921/931/961	SUS316	80279919-008
	STG981	SUS316/HastelloyC	80279919-008
	STE/STH		80279919-008
	STR/STU	w/o hightemp-highvacuum	80279919-008
Carbon steel Box type for corrosion	STD920/930	Tantalum/SUS316L	80279919-011
	STD960	Tantalum/HastelloyC	80279919-011
	STG940/960	Tantalum/SUS316L	80279919-011
	STA923/940	HastelloyC/Tantalum/SUS316L	80279919-011
	STR/STU	w/ hightemp-highvacuum	80279919-011

Meter Body Assembly

STD910

Wetted parts material
SUS316 only



ST 3000 Series 900	Electronic Differential Pressure Transmitter	STD910	1st Edit : 99-10-1	PL2-STJ100-9501 6 of 39
-----------------------	---	--------	--------------------	----------------------------

Meter Body Assembly

(3)Meter Body Assembly Parts List

Key No.	Description	Quantity	Part No.
1	Center body assembly (With E/M assembly)	1set	See Table(a)
2	Process Flange, Rc1/4, SCS14A*1	2	80276386-002
2	Process Flange, 1/4NPT, SCS14A*1	2	80276386-004
2	Process Flange for side vent type, Rc1/4, SCS14A*1	2	80277257-002
2	Process Flange for side vent type, 1/4NPT, SCS14A*1	2	80277257-004
3	Gasket	2	80276388-001
4	'O' ring	1	80020935-825
5	Bolts SUS304	4	80276389-003
5	Bolts SUS630	4	80276389-301
6	Nuts SUS304	10	80276390-002
6	Nuts SUS630	4	80276390-003
7	Vent plug & Vent bushing	1set	See Table(b)
8	Plug, Rc1/4	4	80053702-166
8	Plug, 1/4NPT	4	80053702-266
9	Gasket	10	80274742-001
10	Flange adapter	2	See Table(c)
11	Cover	2	80277979-001
12	Bolts, SUS304	4	80271420-007

*1:SCS14A(Equivalent to SUS316) or SUSF316

Meter Body Assembly

(3)Meter Body Assembly Parts List (Continued)

Table(a) : STD910 Center body assembly

(With E/M assembly)(Wetted parts material:SUS316) Key No.1

Electronics module type	Fill fluid	Burnout Feature	Quantity	Part No.
Standard w/o External zero/span adjustment	Silicone oil	Burnout down	1set	80370490-114
		Burnout up	1set	80370490-124
		Burnout (NA)	1set	80370490-134
Standard w/ External zero/span adjustment		Burnout down	1set	80370490-144
		Burnout up	1set	80370490-154
		Burnout (NA)	1set	80370490-164
Intrinsical safety w/o External zero/span adjustment		Burnout down	1set	80370490-514
		Burnout up	1set	80370490-524
		Burnout (NA)	1set	80370490-534
Intrinsical safety w/ External zero/span adjustment		Burnout down	1set	80370490-544
		Burnout up	1set	80370490-554
		Burnout (NA)	1set	80370490-564
Standard w/o External zero/span adjustment	Fluorine oil	Burnout down	1set	80370491-114
		Burnout up	1set	80370491-124
		Burnout (NA)	1set	80370491-134
Standard w/ External zero/span adjustment		Burnout down	1set	80370491-144
		Burnout up	1set	80370491-154
		Burnout (NA)	1set	80370491-164
Intrinsical safety w/o External zero/span adjustment		Burnout down	1set	80370491-514
		Burnout up	1set	80370491-524
		Burnout (NA)	1set	80370491-534
Intrinsical safety w/ External zero/span adjustment		Burnout down	1set	80370491-544
		Burnout up	1set	80370491-554
		Burnout (NA)	1set	80370491-564

Meter Body Assembly

(3)Meter Body Assembly Parts List (Continued)

Table(b) : Vent plug & Vent bushing

Key No.	Applicable Model No.	Quantity	Part No.
7	Rc1/4, SUS316, St'd	2	80277977-001
	1/4NPT, SUS316, St'd	2	80277977-002
	Rc1/4, SUS316, Long type	2	80277977-005
	1/4NPT, SUS316, Long type	2	80277977-006

Table(c) : Flange adapter

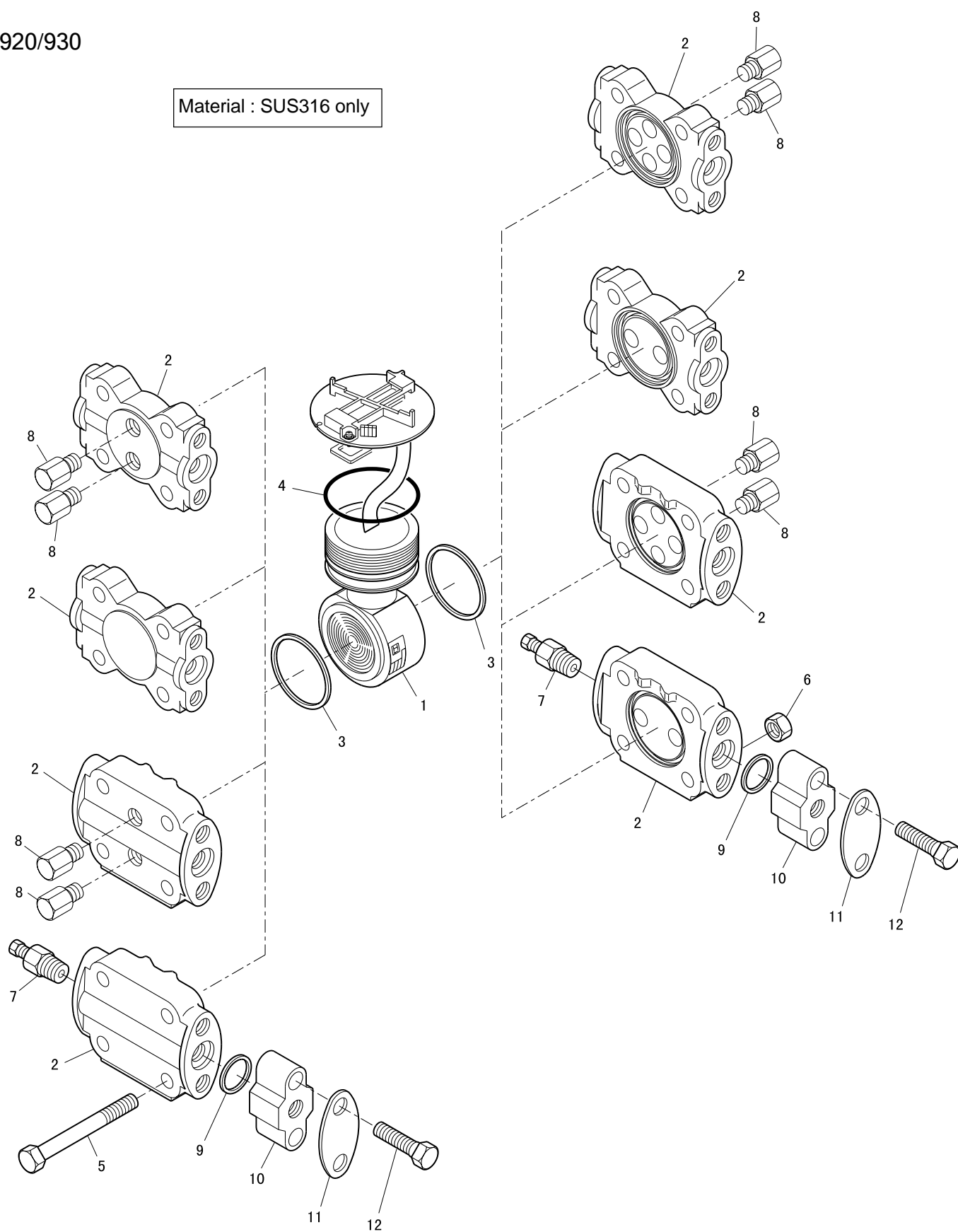
Key No.	Connection	Quantity	Part No.
10	Rc1/2, SCS14A*1	2	80370611-011
	1/2NPT, SCS14A*1	2	80370611-001
	Rc1/4, SCS14A*1	2	80370611-012
	1/4NPT, SCS14A*1	2	80370611-002

*1:SCS14A(Equivalent to SUS316) or SUSF316

Meter Body Assembly

STD920/930

Material : SUS316 only



ST 3000 Series 900	Electronic Differential Pressure Transmitter	STD920/930	1st Edit : 99-10-1	PL2-STJ100-9501 10 of 39
-----------------------	---	------------	--------------------	-----------------------------

Meter Body Assembly

(3)Meter Body Assembly Parts List (Continued)

Key No.	Description	Quantity	Part No.
1	Center body assembly (With E/M assembly)	1set	See Table(a)
2	Process Flange	2	See Table(b)
3	Gasket	2	80277767-001
4	'O' ring	1	80020935-825
5	Bolts SNB7	4	80277765-001
5	Bolts SUS304	4	80277765-002
5	Bolts SUS630	4	80277765-203
6	Nuts S45C	4	80277766-001
6	Nuts SUS304	4	80277766-002
6	Nuts SUS630	4	80277766-003
7	Vent plug & Vent bushing	1set	See Table(c)
8	Plug, Rc1/4	4	80053702-166
8	Plug, 1/4NPT	4	80053702-266
9	Gasket	10	80274742-001
10	Flange adapter	2	See Table(d)
11	Cover	2	80277979-001
12	Bolts, carbon steel	10	80271420-001
12	Bolts, SUS304	4	80271420-007

*1:SCS14A(Equivalent to SUS316) or SUSF316

Meter Body Assembly

(3)Meter Body Assembly Parts List (Continued)

Table(a) : STD920 Center body(Wetted parts material : SUS316) Key No.1

Electronics module type	Fill fluid	Burnout Feature	Quantity	Part No.
Standard w/o External zero/span adjustment	Silicone oil	Burnout down	1set	80370490-111
		Burnout up	1set	80370490-121
		Burnout (NA)	1set	80370490-131
Standard w/ External zero/span adjustment		Burnout down	1set	80370490-141
		Burnout up	1set	80370490-151
		Burnout (NA)	1set	80370490-161
Intrinsic safety w/o External zero/span adjustment		Burnout down	1set	80370490-511
		Burnout up	1set	80370490-521
		Burnout (NA)	1set	80370490-531
Intrinsic safety w/ External zero/span adjustment		Burnout down	1set	80370490-541
		Burnout up	1set	80370490-551
		Burnout (NA)	1set	80370490-561
Standard w/o External zero/span adjustment	Fluorine oil	Burnout down	1set	80370491-111
		Burnout up	1set	80370491-121
		Burnout (NA)	1set	80370491-131
Standard w/ External zero/span adjustment		Burnout down	1set	80370491-141
		Burnout up	1set	80370491-151
		Burnout (NA)	1set	80370491-161
Intrinsic safety w/o External zero/span adjustment		Burnout down	1set	80370491-511
		Burnout up	1set	80370491-521
		Burnout (NA)	1set	80370491-531
Intrinsic safety w/ External zero/span adjustment		Burnout down	1set	80370491-541
		Burnout up	1set	80370491-551
		Burnout (NA)	1set	80370491-561

Meter Body Assembly

(3)Meter Body Assembly Parts List (Continued)

Table(a) : STD930 Center body(Wetted parts material : SUS316) Key No.1

Electronics module type	Fill fluid	Burnout Feature	Quantity	Part No.
Standard w/o External zero/span adjustment	Silicone oil	Burnout down	1set	80370490-113
		Burnout up	1set	80370490-123
		Burnout (NA)	1set	80370490-133
Standard w/ External zero/span adjustment		Burnout down	1set	80370490-143
		Burnout up	1set	80370490-153
		Burnout (NA)	1set	80370490-163
Intrinsic safety w/o External zero/span adjustment		Burnout down	1set	80370490-513
		Burnout up	1set	80370490-523
		Burnout (NA)	1set	80370490-533
Intrinsic safety w/ External zero/span adjustment		Burnout down	1set	80370490-543
		Burnout up	1set	80370490-553
		Burnout (NA)	1set	80370490-563
Standard w/o External zero/span adjustment	Fluorine oil	Burnout down	1set	80370491-113
		Burnout up	1set	80370491-123
		Burnout (NA)	1set	80370491-133
Standard w/ External zero/span adjustment		Burnout down	1set	80370491-143
		Burnout up	1set	80370491-153
		Burnout (NA)	1set	80370491-163
Intrinsic safety w/o External zero/span adjustment		Burnout down	1set	80370491-513
		Burnout up	1set	80370491-523
		Burnout (NA)	1set	80370491-533
Intrinsic safety w/ External zero/span adjustment		Burnout down	1set	80370491-543
		Burnout up	1set	80370491-553
		Burnout (NA)	1set	80370491-563

Meter Body Assembly

(3)Meter Body Assembly Parts List (Continued)

Table(b) : Process flange

Key No.	Description	Quantity	Part No.
2	Process Flange, Rc1/4, C.S. Zn Plated	2	80277768-001
	Process Flange, Rc1/4, SCS14A*1	2	80370610-011
	Process Flange, Rc1/4, C.S. Ni Plated	2	80277768-901
	Process Flange, 1/4NPT, C.S. Zn Plated	2	80277768-003
	Process Flange, 1/4NPT, SCS14A*1	2	80370610-001
	Process Flange, 1/4NPT, C.S. Ni Plated	2	80277768-903
	Process Flange, Rc1/4, C.S. Zn Plated, for side vent type	2	80277768-011
	Process Flange, Rc1/4, SCS14A*1 for side vent type	2	80370610-111
	Process Flange, Rc1/4, C.S. Ni Plated for side vent type	2	80277768-911
	Process Flange, 1/4NPT, C.S. Zn Plated for side vent type	2	80277768-113
	Process Flange, 1/4NPT, SCS14A*1 for side vent type	2	80370610-101
	Process Flange, 1/4NPT, C.S. Ni Plated for side vent type	2	80277768-913

*1:SCS14A(Equivalent to SUS316) or SUSF316

Table(c) : Vent plug & Vent bushing

Key No.	Applicable Model No.	Quantity	Part No.
7	Rc1/4, SUS316, St'd	2	80277977-001
	1/4NPT, SUS316, St'd	2	80277977-002
	Rc1/4, SUS316, Long type	2	80277977-005
	1/4NPT, SUS316, Long type	2	80277977-006

Table(d) : Flange adapter

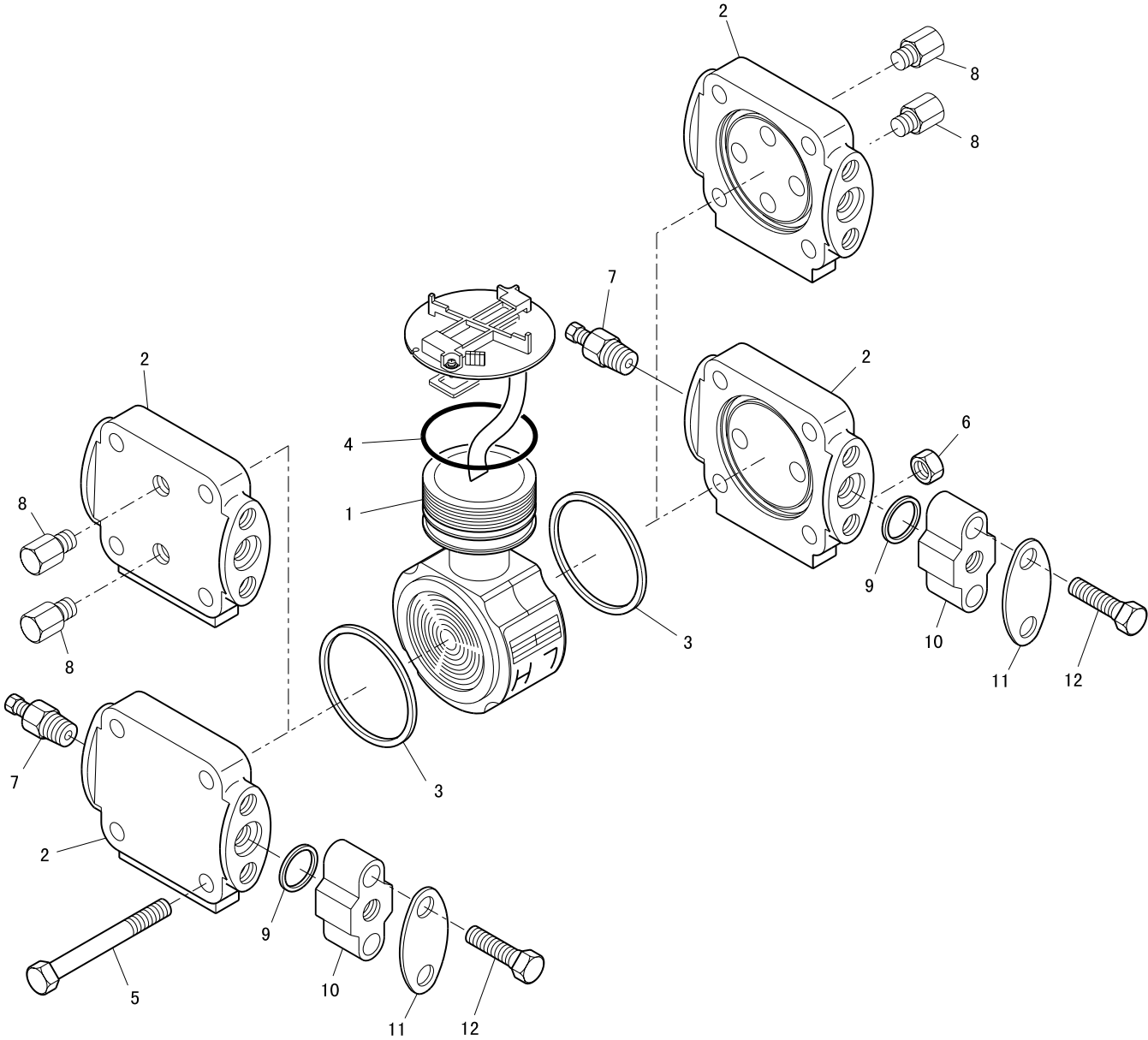
Key No.	Connection	Quantity	Part No.
10	Rc1/2, SCS14A*1	2	80370611-011
	1/2NPT, SCS14A*1	2	80370611-001
	Rc1/4, SCS14A*1	2	80370611-012
	1/4NPT, SCS14A*1	2	80370611-002

*1:SCS14A(Equivalent to SUS316) or SUSF316

Meter Body Assembly

STD960

Material : SUS316 only



ST 3000 Series 900	Electronic Differential Pressure Transmitter	STD960	1st Edit : 99-10-1	PL2-STJ100-9501 15 of 39
-----------------------	---	--------	--------------------	-----------------------------

Meter Body Assembly

(3)Meter Body Assembly Parts List (Continued)

Key No.	Description	Quantity	Part No.
1	Center body assembly (With E/M assembly)	1set	See Table(a)
2	Process Flange	2	See Table(b)
3	Gasket	2	80276388-001
4	'O' ring	1	80020935-825
5	Bolts SNB7	4	80276389-001
5	Bolts SUS304	4	80276389-003
5	Bolts SUS630	4	80276389-301
6	Nuts S45C	10	80276390-001
6	Nuts SUS304	10	80276390-002
6	Nuts SUS630	4	80276390-003
7	Vent plug & Vent bushing	1set	See Table(c)
8	Plug, Rc1/4	4	80053702-166
8	Plug, 1/4NPT	4	80053702-266
9	Gasket	10	80274742-001
10	Flange adapter	2	See Table(d)
11	Cover	2	80277979-001
12	Bolts, carbon steel	10	80271420-001
12	Bolts, SUS304	4	80271420-007

*1:SCS14A(Equivalent to SUS316) or SUSF316

Meter Body Assembly

(3)Meter Body Assembly Parts List (Continued)

Table(a) : STD960 Center body assembly (With E/M assembly)

(Wetted parts material : SUS316) Key No.1

Electronics module type	Fill fluid	Burnout Feature	Quantity	Part No.
Standard w/o External zero/span adjustment	Silicone oil	Burnout down	1set	80370490-117
		Burnout up	1set	80370490-127
		Burnout (NA)	1set	80370490-137
Standard w/ External zero/span adjustment		Burnout down	1set	80370490-147
		Burnout up	1set	80370490-157
		Burnout (NA)	1set	80370490-167
Intrinsic safety w/o External zero/span adjustment		Burnout down	1set	80370490-517
		Burnout up	1set	80370490-527
		Burnout (NA)	1set	80370490-537
Intrinsic safety w/ External zero/span adjustment		Burnout down	1set	80370490-547
		Burnout up	1set	80370490-557
		Burnout (NA)	1set	80370490-567
Standard w/o External zero/span adjustment	Fluorine oil	Burnout down	1set	80370491-117
		Burnout up	1set	80370491-127
		Burnout (NA)	1set	80370491-137
Standard w/ External zero/span adjustment		Burnout down	1set	80370491-147
		Burnout up	1set	80370491-157
		Burnout (NA)	1set	80370491-167
Intrinsic safety w/o External zero/span adjustment		Burnout down	1set	80370491-517
		Burnout up	1set	80370491-527
		Burnout (NA)	1set	80370491-537
Intrinsic safety w/ External zero/span adjustment		Burnout down	1set	80370491-547
		Burnout up	1set	80370491-557
		Burnout (NA)	1set	80370491-567

Meter Body Assembly

(3)Meter Body Assembly Parts List (Continued)

Table(b) : Process flange

Key No.	Description	Quantity	Part No.
2	Process Flange, Rc1/4, C.S. Zn Plated	2	80276386-001
	Process Flange, Rc1/4, SCS14A*1	2	80276386-002
	Process Flange, Rc1/4, C.S. Ni Plated	2	80276386-901
	Process Flange, 1/4NPT, C.S. Zn Plated	2	80276386-003
	Process Flange, 1/4NPT, SCS14A*1	2	80276386-004
	Process Flange, 1/4NPT, C.S. Ni Plated	2	80276386-903
	Process Flange, Rc1/4, C.S. Zn Plated, for side vent type	2	80277257-001
	Process Flange, Rc1/4, SCS14A*1 for side vent type	2	80277257-002
	Process Flange, Rc1/4, C.S. Ni Plated for side vent type	2	80277257-901
	Process Flange, 1/4NPT, C.S. Zn Plated for side vent type	2	80277257-003
	Process Flange, 1/4NPT, SCS14A*1 for side vent type	2	80277257-004
	Process Flange, 1/4NPT, C.S. Ni Plated for side vent type	2	80277257-903

*1:SCS14A(Equivalent to SUS316) or SUSF316

Table(c) : Vent plug & Vent bushing

Key No.	Applicable Model No.	Quantity	Part No.
7	Rc1/4, SUS316, St'd	2	80277977-001
	1/4NPT, SUS316, St'd	2	80277977-002
	Rc1/4, SUS316, Long type	2	80277977-005
	1/4NPT, SUS316, Long type	2	80277977-006

Table(d) : Flange adapter

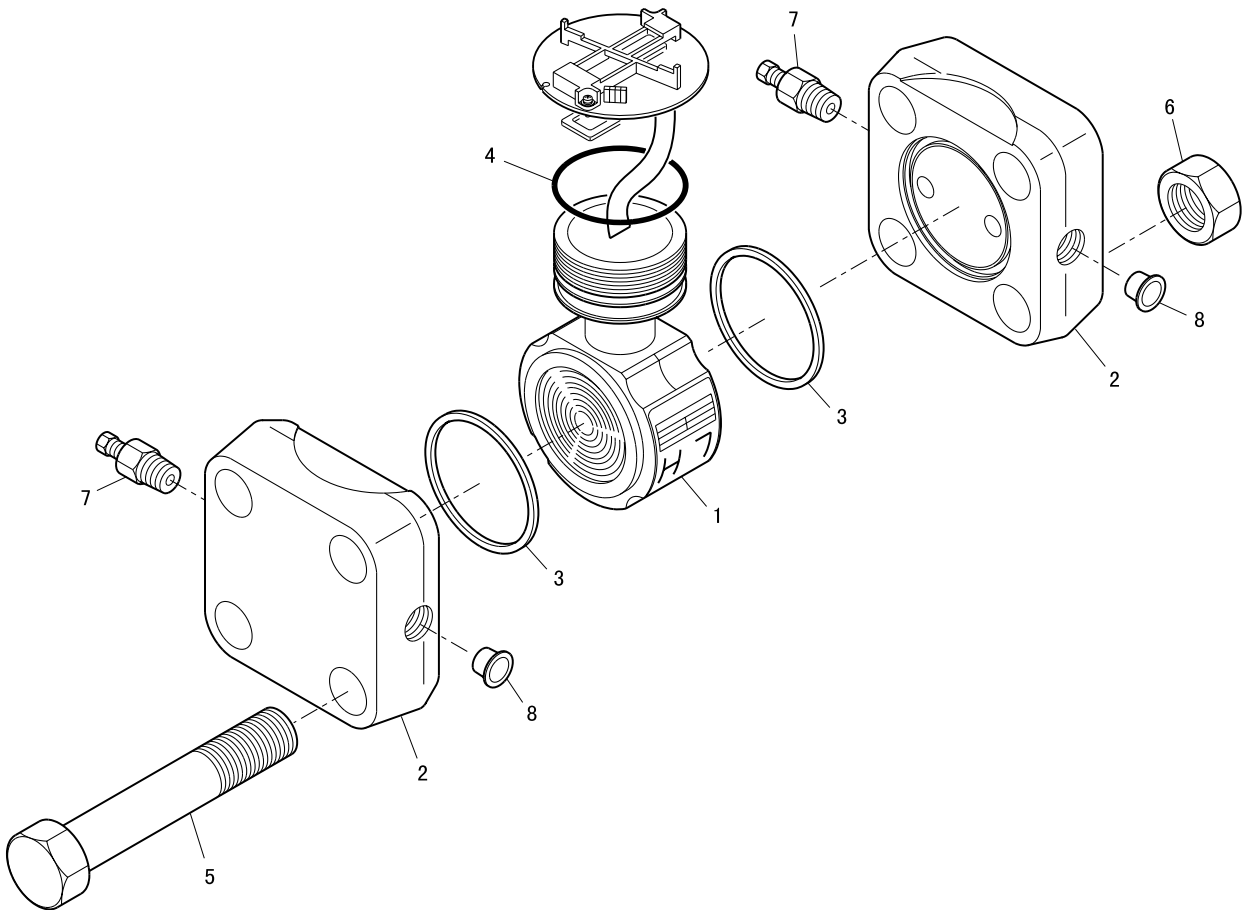
Key No.	Connection	Quantity	Part No.
10	Rc1/2, SCS14A*1	2	80370611-011
	1/2NPT, SCS14A*1	2	80370611-001
	Rc1/4, SCS14A*1	2	80370611-012
	1/4NPT, SCS14A*1	2	80370611-002

*1:SCS14A(Equivalent to SUS316) or SUSF316

Meter Body Assembly

STD921/931/961

Material : SUS316 only



ST 3000 Series 900	Electronic Differential Pressure Transmitter	STD921/931/961	1st Edit : 99-10-1	PL2-STJ100-9501 19 of 39
-----------------------	---	----------------	--------------------	-----------------------------

Meter Body Assembly

(3)Meter Body Assembly Parts List (Continued)

Key No.	Description	Quantity	Part No.
1	Center body assembly (With E/M assembly)	1set	See Table(a)
2	Process Flange	2	See Table(b)
3	Gasket	2	80276388-001
4	'O' ring	1	80020935-825
5	Bolts SNB7	4	80277115-001
5	Bolts SUS304	4	80277115-002
5	Bolts SUS630	4	80277115-203
6	Nuts S45C	4	80277116-001
6	Nuts SUS304	4	80277116-002
6	Nuts SUS630	4	80277116-003
7	Vent plug & Vent bushing	1set	See Table(c)
8	Plastic plug,Rc1/2, 1/2NPT	10	HS400006-000
8	Plastic plug,Rc1/4, 1/4NPT	10	HS400002-000

Meter Body Assembly

(3)Meter Body Assembly Parts List (Continued)

Table(a) : STD921 Center body(Wetted parts material : SUS316) Key No.1

Electronics module type	Fill fluid	Burnout Feature	Quantity	Part No.
Standard w/o External zero/span adjustment	Silicone oil	Burnout down	1set	80370490-115
		Burnout up	1set	80370490-125
		Burnout (NA)	1set	80370490-135
Standard w/ External zero/span adjustment		Burnout down	1set	80370490-145
		Burnout up	1set	80370490-155
		Burnout (NA)	1set	80370490-165
Intrinsic safety w/o External zero/span adjustment		Burnout down	1set	80370490-515
		Burnout up	1set	80370490-525
		Burnout (NA)	1set	80370490-535
Intrinsic safety w/ External zero/span adjustment		Burnout down	1set	80370490-545
		Burnout up	1set	80370490-555
		Burnout (NA)	1set	80370490-565
Standard w/o External zero/span adjustment	Fluorine oil	Burnout down	1set	80370491-115
		Burnout up	1set	80370491-125
		Burnout (NA)	1set	80370491-135
Standard w/ External zero/span adjustment		Burnout down	1set	80370491-145
		Burnout up	1set	80370491-155
		Burnout (NA)	1set	80370491-165
Intrinsic safety w/o External zero/span adjustment		Burnout down	1set	80370491-515
		Burnout up	1set	80370491-525
		Burnout (NA)	1set	80370491-535
Intrinsic safety w/ External zero/span adjustment		Burnout down	1set	80370491-545
		Burnout up	1set	80370491-555
		Burnout (NA)	1set	80370491-565

Meter Body Assembly

(3)Meter Body Assembly Parts List (Continued)

Table(a) : STD931 Center body(Wetted parts material : SUS316) Key No.1

Electronics module type	Fill fluid	Burnout Feature	Quantity	Part No.
Standard w/o External zero/span adjustment	Silicone oil	Burnout down	1set	80370490-116
		Burnout up	1set	80370490-126
		Burnout (NA)	1set	80370490-136
Standard w/ External zero/span adjustment		Burnout down	1set	80370490-146
		Burnout up	1set	80370490-156
		Burnout (NA)	1set	80370490-166
Intrinsic safety w/o External zero/span adjustment		Burnout down	1set	80370490-516
		Burnout up	1set	80370490-526
		Burnout (NA)	1set	80370490-536
Intrinsic safety w/ External zero/span adjustment		Burnout down	1set	80370490-546
		Burnout up	1set	80370490-556
		Burnout (NA)	1set	80370490-566
Standard w/o External zero/span adjustment	Fluorine oil	Burnout down	1set	80370491-116
		Burnout up	1set	80370491-126
		Burnout (NA)	1set	80370491-136
Standard w/ External zero/span adjustment		Burnout down	1set	80370491-146
		Burnout up	1set	80370491-156
		Burnout (NA)	1set	80370491-166
Intrinsic safety w/o External zero/span adjustment		Burnout down	1set	80370491-516
		Burnout up	1set	80370491-526
		Burnout (NA)	1set	80370491-536
Intrinsic safety w/ External zero/span adjustment		Burnout down	1set	80370491-546
		Burnout up	1set	80370491-556
		Burnout (NA)	1set	80370491-566

Meter Body Assembly

(3)Meter Body Assembly Parts List (Continued)

Table(a) : STD961 Center body(Wetted parts material : SUS316) Key No.1

Electronics module type	Fill fluid	Burnout Feature	Quantity	Part No.
Standard w/o External zero/span adjustment	Silicone oil	Burnout down	1set	80370490-117
		Burnout up	1set	80370490-127
		Burnout (NA)	1set	80370490-137
Standard w/ External zero/span adjustment		Burnout down	1set	80370490-147
		Burnout up	1set	80370490-157
		Burnout (NA)	1set	80370490-167
Intrinsic safety w/o External zero/span adjustment		Burnout down	1set	80370490-517
		Burnout up	1set	80370490-527
		Burnout (NA)	1set	80370490-537
Intrinsic safety w/ External zero/span adjustment		Burnout down	1set	80370490-547
		Burnout up	1set	80370490-557
		Burnout (NA)	1set	80370490-567
Standard w/o External zero/span adjustment	Fluorine oil	Burnout down	1set	80370491-117
		Burnout up	1set	80370491-127
		Burnout (NA)	1set	80370491-137
Standard w/ External zero/span adjustment		Burnout down	1set	80370491-147
		Burnout up	1set	80370491-157
		Burnout (NA)	1set	80370491-167
Intrinsic safety w/o External zero/span adjustment		Burnout down	1set	80370491-517
		Burnout up	1set	80370491-527
		Burnout (NA)	1set	80370491-537
Intrinsic safety w/ External zero/span adjustment		Burnout down	1set	80370491-547
		Burnout up	1set	80370491-557
		Burnout (NA)	1set	80370491-567

Meter Body Assembly

(3)Meter Body Assembly Parts List (Continued)

Table(b) : Process flange

Key No.	Applicable Model No.	Quantity	Part No.	Process connection
2	Process Flange, Rc1/4,C.S.,Zn Plate	2	80277100-011	Top & bottom
	Process Flange, Rc1/4, SUS316	2	80277100-021	Top & bottom
	Process Flange, Rc1/4, C.S. Ni Plate	2	80277100-911	Top & bottom
	Process Flange, 1/4NPT,C.S.,Zn Plate	2	80277100-012	Top & bottom
	Process Flange, 1/4NPT, SUS316	2	80277100-022	Top & bottom
	Process Flange, 1/4NPT, C.S. Ni Plate	2	80277100-912	Top & bottom
	HP side			
	Process Flange, Rc1/2,C.S.,Zn Plate	1	80370199-011	Top
	Process Flange, Rc1/2, SUS316	1	80370199-021	Top
	Process Flange, Rc1/2, C.S. Ni Plate	1	80370199-911	Top
	Process Flange, 1/2NPT,C.S.,Zn Plate	1	80370199-012	Top
	Process Flange, 1/2NPT, SUS316	1	80370199-022	Top
	Process Flange, 1/2NPT, C.S. Ni Plate	1	80370199-912	Top
	Process Flange, Rc1/2,C.S.,Zn Plate	1	80370200-011	Bottom
	Process Flange, Rc1/2, SUS316	1	80370200-021	Bottom
	Process Flange, Rc1/2, C.S. Ni Plate	1	80370200-911	Bottom
	Process Flange, 1/2NPT,C.S.,Zn Plate	1	80370200-012	Bottom
	Process Flange, 1/2NPT, SUS316	1	80370200-022	Bottom
	Process Flange, 1/2NPT, C.S. Ni Plate	1	80370200-912	Bottom
	LP side			
	Process Flange, Rc1/2,C.S.,Zn Plate	1	80370200-011	Top
	Process Flange, Rc1/2, SUS316	1	80370200-021	Top
	Process Flange, Rc1/2, C.S. Ni Plate	1	80370200-911	Top
	Process Flange, 1/2NPT,C.S.,Zn Plate	1	80370200-012	Top
	Process Flange, 1/2NPT, SUS316	1	80370200-022	Top
	Process Flange, 1/2NPT, C.S. Ni Plate	1	80370200-912	Top
	Process Flange, Rc1/2,C.S.,Zn Plate	1	80370199-011	Bottom
	Process Flange, Rc1/2, SUS316	1	80370199-021	Bottom
	Process Flange, Rc1/2, C.S. Ni Plate	1	80370199-911	Bottom
	Process Flange, 1/2NPT,C.S.,Zn Plate	1	80370199-012	Bottom
	Process Flange, 1/2NPT, SUS316	1	80370199-022	Bottom
	Process Flange, 1/2NPT, C.S. Ni Plate	1	80370199-912	Bottom

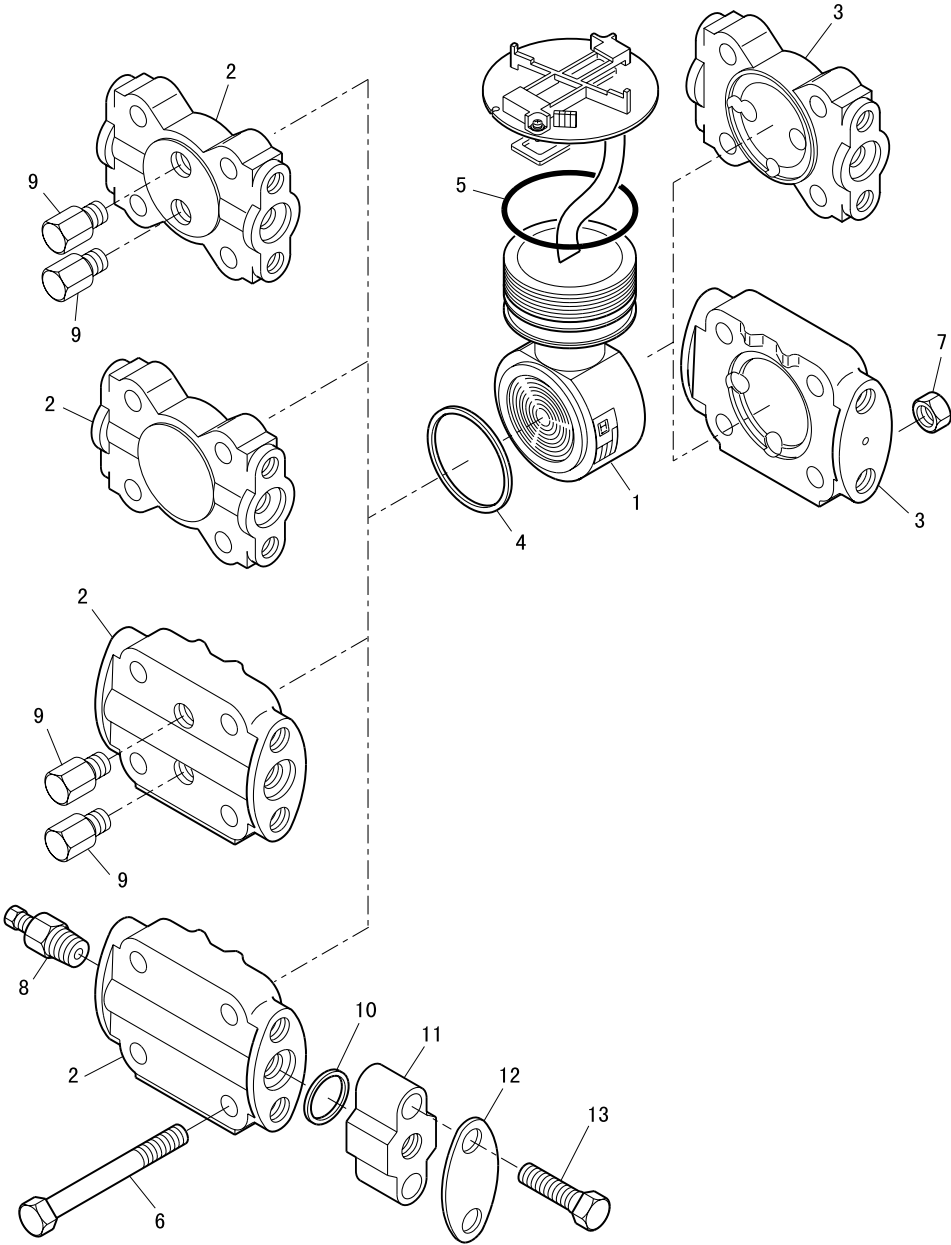
Table(c) : Vent plug & Vent bushing

Key No.	Applicable Model No.	Quantity	Part No.
7	Rc1/4, SUS316, St'd	2	80277977-001
	1/4NPT, SUS316, St'd	2	80277977-002
	Rc1/4, SUS316, Long type	2	80277977-005
	1/4NPT, SUS316, Long type	2	80277977-006

Meter Body Assembly

STG940/960

Material : SUS316 only



ST 3000 Series 900	Electronic Differential Pressure Transmitter	STG940/960	1st Edit : 99-10-1	PL2-STJ100-9501 25 of 39
-----------------------	---	------------	--------------------	-----------------------------

Meter Body Assembly

(3)Meter Body Assembly Parts List (Continued)

Key No.	Description	Quantity	Part No.
1	Center body assembly (With E/M assembly)	1set	See Table(a)
2	Process Flange(HP side)	1	See Table(b)
3	Process Flange(LP side), C.S Zn plated	1	80277854-011
3	Process Flange(LP side), SCS14A*1	1	80370612-001
3	Process Flange(LP side), C.S Ni plated	1	80277854-911
4	Gasket	1	80277767-001
5	'O' ring	1	80020935-825
6	Bolts SNB7	4	80277765-001
6	Bolts SUS304	4	80277765-002
6	Bolts SUS630	4	80277765-003
7	Nuts SNB7	4	80277766-001
7	Nuts SUS304	4	80277766-002
7	Nuts SUS630	4	80277766-003
8	Vent plug & Vent bushing	1set	See Table(c)
9	Plug, Rc1/4	4	80053702-166
9	Plug, 1/4NPT	4	80053702-266
10	Gasket	10	80274742-001
11	Flange adapter	1	See Table(d)
12	Cover	1	80277979-001
13	Bolts, carbon steel	10	80271420-001
13	Bolts, SUS304	1	80271420-007

*1:SCS14A(Equivalent to SUS316) or SUSF316

Meter Body Assembly

(3)Meter Body Assembly Parts List (Continued)

Table(a) : STG940 Center body(Wetted parts material : SUS316) Key No.1

Electronics module type	Fill fluid	Burnout Feature	Quantity	Part No.
Standard w/o External zero/span adjustment	Silicone oil	Burnout down	1set	80370492-111
		Burnout up	1set	80370492-121
		Burnout (NA)	1set	80370492-131
Standard w/ External zero/span adjustment		Burnout down	1set	80370492-141
		Burnout up	1set	80370492-151
		Burnout (NA)	1set	80370492-161
Intrinsic safety w/o External zero/span adjustment		Burnout down	1set	80370492-511
		Burnout up	1set	80370492-521
		Burnout (NA)	1set	80370492-531
Intrinsic safety w/ External zero/span adjustment		Burnout down	1set	80370492-541
		Burnout up	1set	80370492-551
		Burnout (NA)	1set	80370492-561
Standard w/o External zero/span adjustment	Fluorine oil	Burnout down	1set	80370492-116
		Burnout up	1set	80370492-126
		Burnout (NA)	1set	80370492-136
Standard w/ External zero/span adjustment		Burnout down	1set	80370492-146
		Burnout up	1set	80370492-156
		Burnout (NA)	1set	80370492-166
Intrinsic safety w/o External zero/span adjustment		Burnout down	1set	80370492-516
		Burnout up	1set	80370492-526
		Burnout (NA)	1set	80370492-536
Intrinsic safety w/ External zero/span adjustment		Burnout down	1set	80370492-546
		Burnout up	1set	80370492-556
		Burnout (NA)	1set	80370492-566

Meter Body Assembly

(3)Meter Body Assembly Parts List (Continued)

Table(a) : STG960 Center body(Wetted parts material : SUS316) Key No.1

Electronics module type	Fill fluid	Burnout Feature	Quantity	Part No.
Standard w/o External zero/span adjustment	Silicone oil	Burnout down	1set	80370492-112
		Burnout up	1set	80370492-122
		Burnout (NA)	1set	80370492-132
Standard w/ External zero/span adjustment		Burnout down	1set	80370492-142
		Burnout up	1set	80370492-152
		Burnout (NA)	1set	80370492-162
Intrinsic safety w/o External zero/span adjustment		Burnout down	1set	80370492-512
		Burnout up	1set	80370492-522
		Burnout (NA)	1set	80370492-532
Intrinsic safety w/ External zero/span adjustment		Burnout down	1set	80370492-542
		Burnout up	1set	80370492-552
		Burnout (NA)	1set	80370492-562
Standard w/o External zero/span adjustment	Fluorine oil	Burnout down	1set	80370492-117
		Burnout up	1set	80370492-127
		Burnout (NA)	1set	80370492-137
Standard w/ External zero/span adjustment		Burnout down	1set	80370492-147
		Burnout up	1set	80370492-157
		Burnout (NA)	1set	80370492-167
Intrinsic safety w/o External zero/span adjustment		Burnout down	1set	80370492-517
		Burnout up	1set	80370492-527
		Burnout (NA)	1set	80370492-537
Intrinsic safety w/ External zero/span adjustment		Burnout down	1set	80370492-547
		Burnout up	1set	80370492-557
		Burnout (NA)	1set	80370492-567

Meter Body Assembly

(3)Meter Body Assembly Parts List (Continued)

Table(b) : Process Flange : HP side

Key No.	Description	Quantity	Part No.
2	Process Flange, Rc1/4, C.S. Zn Plated	1	80277768-001
	Process Flange, Rc1/4, SCS14A*1	1	80370610-011
	Process Flange, Rc1/4, C.S. Ni Plated	1	80277768-901
	Process Flange, 1/4NPT, C.S. Zn Plated	1	80277768-003
	Process Flange, 1/4NPT, SCS14A*1	1	80370610-001
	Process Flange, 1/4NPT, C.S. Ni Plated	1	80277768-903
	Process Flange, Rc1/4, C.S. Zn Plated, for side vent type	1	80277768-011
	Process Flange, Rc1/4, SCS14A*1 for side vent type	1	80370610-111
	Process Flange, Rc1/4, C.S. Ni Plated for side vent type	1	80277768-911
	Process Flange, 1/4NPT, C.S. Zn Plated for side vent type	1	80277768-013
	Process Flange, 1/4NPT, SCS14A*1 for side vent type	1	80370610-101
	Process Flange, 1/4NPT, C.S. Ni Plated for side vent type	1	80277768-913

*1:SCS14A(Equivalent to SUS316) or SUSF316

Table(c) : Vent plug & Vent bushing

Key No.	Applicable Model No.	Quantity	Part No.
8	Rc1/4, SUS316, St'd	1	80277977-001
	1/4NPT, SUS316, St'd	1	80277977-002
	Rc1/4, SUS316, Long type	1	80277977-005
	1/4NPT, SUS316, Long type	1	80277977-006

Table(d) : Flange adapter

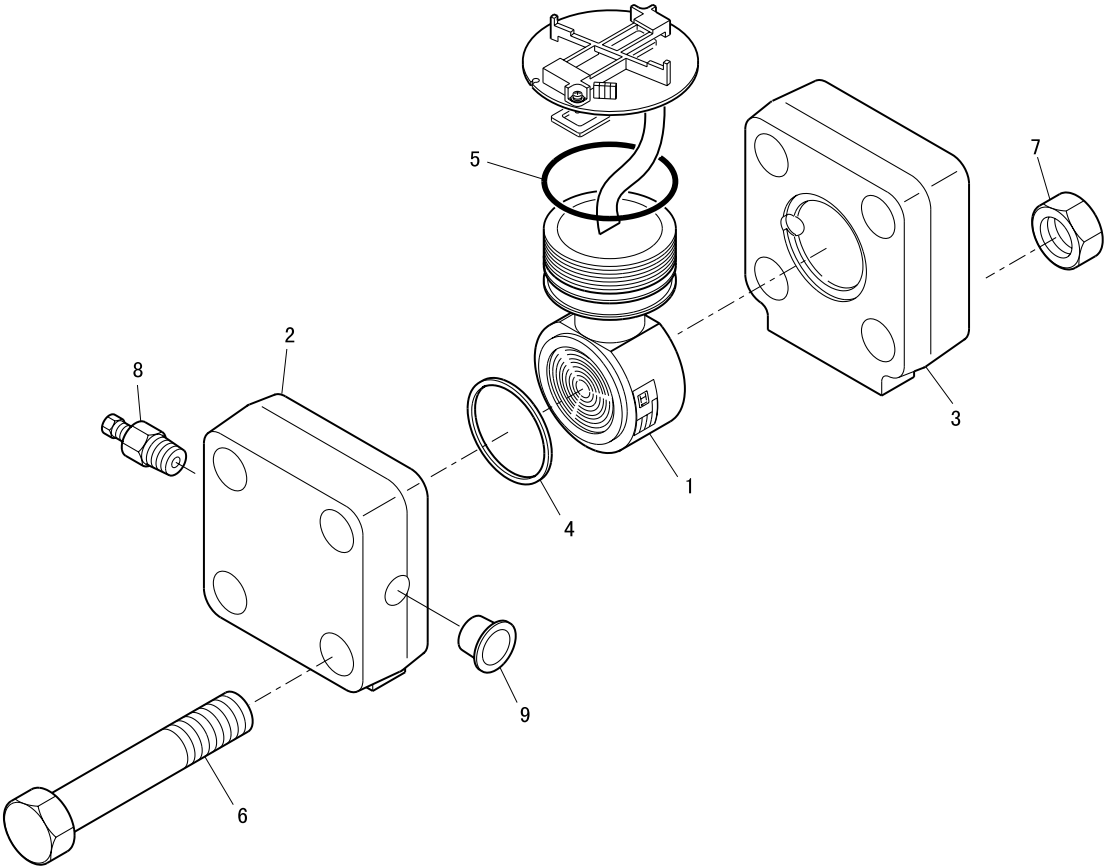
Key No.	Connection	Quantity	Part No.
11	Rc1/2, SCS14A*1	1	80370611-011
	1/2NPT, SCS14A*1	1	80370611-001
	Rc1/4, SCS14A*1	1	80370611-012
	1/4NPT, SCS14A*1	1	80370611-002

*1:SCS14A(Equivalent to SUS316) or SUSF316

Meter Body Assembly

STG981

Material : SUS316 only



ST 3000 Series 900	Electronic Differential Pressure Transmitter	STG981	1st Edit : 99-10-1	PL2-STJ100-9501 30 of 39
-----------------------	---	--------	--------------------	-----------------------------

Meter Body Assembly

(3)Meter Body Assembly Parts List (Continued)

Key No.	Description	Quantity	Part No.
1	Center body assembly (With E/M assembly)	1set	See Table(a)
2	Process Flange(HP side)	1	See Table(b)
3	Process Flange, C.S. Zn Plated	1	80370242-011
3	Process Flange, SCS14A*1	1	80370242-021
3	Process Flange, C.S. Ni Plated	1	80370242-911
4	Gasket	1	80277767-001
5	'O' ring	1	80020935-825
6	Bolts S45C	4	80370246-001
6	Bolts SUS304	4	80370246-002
6	Bolts SUS630	4	80370246-003
7	Nuts S45C	4	80370247-001
7	Nuts SUS304	4	80370247-002
7	Nuts SUS630	4	80370247-003
8	Vent plug & Vent bushing	1set	See Table(c)
9	Plastic plug,Rc1/2, 1/2NPT	10	HS400006-000
9	Plastic plug,Rc1/4, 1/4NPT	10	HS400002-000

*1:SCS14A(Equivalent to SUS316) or SUSF316

Meter Body Assembly

(3)Meter Body Assembly Parts List (Continued)

Table(a) : STG981 Center body(Wetted parts material : SUS316) Key No.1

Electronics module type	Fill fluid	Burnout Feature	Quantity	Part No.
Standard w/o External zero/span adjustment	Silicone oil	Burnout down	1set	80370492-113
		Burnout up	1set	80370492-123
		Burnout (NA)	1set	80370492-133
Standard w/ External zero/span adjustment		Burnout down	1set	80370492-143
		Burnout up	1set	80370492-153
		Burnout (NA)	1set	80370492-163
Intrinsic safety w/o External zero/span adjustment		Burnout down	1set	80370492-513
		Burnout up	1set	80370492-523
		Burnout (NA)	1set	80370492-533
Intrinsic safety w/ External zero/span adjustment		Burnout down	1set	80370492-543
		Burnout up	1set	80370492-553
		Burnout (NA)	1set	80370492-563
Standard w/o External zero/span adjustment	Fluorine oil	Burnout down	1set	80370492-118
		Burnout up	1set	80370492-128
		Burnout (NA)	1set	80370492-138
Standard w/ External zero/span adjustment		Burnout down	1set	80370492-148
		Burnout up	1set	80370492-158
		Burnout (NA)	1set	80370492-168
Intrinsic safety w/o External zero/span adjustment		Burnout down	1set	80370492-518
		Burnout up	1set	80370492-528
		Burnout (NA)	1set	80370492-538
Intrinsic safety w/ External zero/span adjustment		Burnout down	1set	80370492-548
		Burnout up	1set	80370492-558
		Burnout (NA)	1set	80370492-568

Meter Body Assembly

(3)Meter Body Assembly Parts List (Continued)

Table(b) : Process flange(HP side)

Key No.	Description	Quantity	Part No.	Prosecc connection
2	Process Flange, Rc1/4,C.S. Zn Plated	1	80370244-011	Top & bottom
	Process Flange, Rc1/4, SCS14A*1	1	80370244-021	Top & bottom
	Process Flange, Rc1/4, C.S. Ni Plated	1	80370244-911	Top & bottom
	Process Flange, 1/4NPT,C.S. Zn Plated	1	80370244-012	Top & bottom
	Process Flange, 1/4NPT, SCS14A*1	1	80370244-022	Top & bottom
	Process Flange, 1/4NPT, C.S. Ni Plated	1	80370244-912	Top & bottom

*1:SCS14A(Equivalent to SUS316) or SUSF316

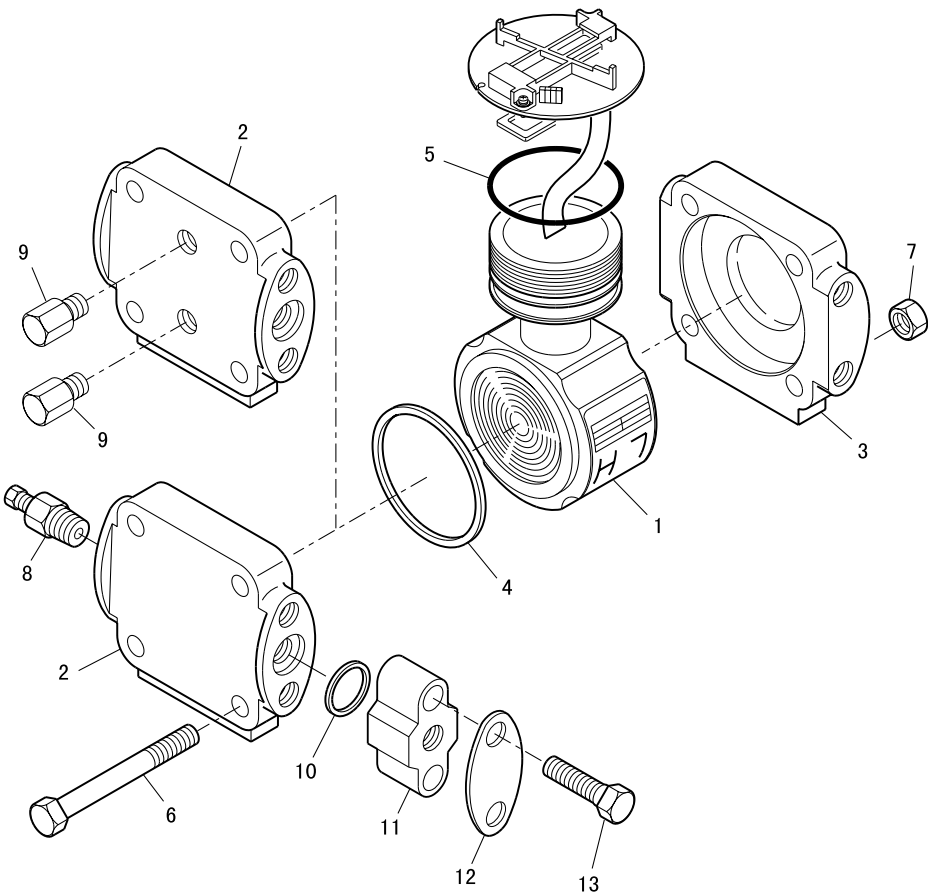
Table(c) : Vent plug & Vent bushing

Key No.	Applicable Model No.	Quantity	Part No.
8	Rc1/4, SUS316, St'd	1	80277977-001
	1/4NPT, SUS316, St'd	1	80277977-002
	Rc1/4, SUS316, Long type	1	80277977-005
	1/4NPT, SUS316, Long type	1	80277977-006

Meter Body Assembly

STA923/940

Material : SUS316 only



ST 3000 Series 900	Electronic Differential Pressure Transmitter	STA923/940	1st Edit : 99-10-1	PL2-STJ100-9501 34 of 39
-----------------------	---	------------	--------------------	-----------------------------

Meter Body Assembly

(3)Meter Body Assembly Parts List (Continued)

Key No.	Description	Quantity	Part No.
1	Center body assembly (With E/M assembly)	1set	See Table(a)
2	Process Flange:HP side	1	See Table(b)
3	Process Flange:LP side, carbon steel Zn Plated	1	80277855-011
3	Process Flange:LP side, SCS14A*1	1	80277855-012
3	Process Flange:LP side, carbon steel Ni Plated	1	80277855-911
4	Gasket	1	80276388-001
5	'O' ring	1	80020935-825
6	Bolts SNB7	4	80276389-001
6	Bolts SUS304	4	80276389-003
6	Bolts SUS630	4	80276389-301
7	Nuts S45C	10	80276390-001
7	Nuts SUS304	10	80276390-002
7	Nuts SUS630	4	80276390-003
8	Vent plug & Vent bushing	1set	See Table(c)
9	Plug, Rc1/4	4	80053702-166
9	Plug, 1/4NPT	4	80053702-266
10	Gasket	10	80274742-001
11	Flange adapter	1	See Table(d)
12	Cover	1	80277929-001
13	Bolts, carbon steel	10	80271420-001
13	Bolts, SUS304	1	80271420-007

*1:SCS14A(Equivalent to SUS316) or SUSF316

Meter Body Assembly

(3)Meter Body Assembly Parts List (Continued)

Table(a) : STA923 Center body(Wetted parts material : SUS316) Key No.1

Electronics module type	Fill fluid	Burnout Feature	Quantity	Part No.
Standard w/o External zero/span adjustment	Silicone oil	Burnout down	1set	80370492-114
		Burnout up	1set	80370492-124
		Burnout (NA)	1set	80370492-134
Standard w/ External zero/span adjustment		Burnout down	1set	80370492-144
		Burnout up	1set	80370492-154
		Burnout (NA)	1set	80370492-164
Intrinsic safety w/o External zero/span adjustment		Burnout down	1set	80370492-514
		Burnout up	1set	80370492-524
		Burnout (NA)	1set	80370492-534
Intrinsic safety w/ External zero/span adjustment		Burnout down	1set	80370492-544
		Burnout up	1set	80370492-554
		Burnout (NA)	1set	80370492-564
Standard w/o External zero/span adjustment	Fluorine oil	Burnout down	1set	80370492-119
		Burnout up	1set	80370492-129
		Burnout (NA)	1set	80370492-139
Standard w/ External zero/span adjustment		Burnout down	1set	80370492-149
		Burnout up	1set	80370492-159
		Burnout (NA)	1set	80370492-169
Intrinsic safety w/o External zero/span adjustment		Burnout down	1set	80370492-519
		Burnout up	1set	80370492-529
		Burnout (NA)	1set	80370492-539
Intrinsic safety w/ External zero/span adjustment		Burnout down	1set	80370492-549
		Burnout up	1set	80370492-559
		Burnout (NA)	1set	80370492-569

Meter Body Assembly

(3)Meter Body Assembly Parts List (Continued)

Table(a) : STA940 Center body(Wetted parts material : SUS316) Key No.1

Electronics module type	Fill fluid	Burnout Feature	Quantity	Part No.
Standard w/o External zero/span adjustment	Silicone oil	Burnout down	1set	80370492-115
		Burnout up	1set	80370492-125
		Burnout (NA)	1set	80370492-135
Standard w/ External zero/span adjustment		Burnout down	1set	80370492-145
		Burnout up	1set	80370492-155
		Burnout (NA)	1set	80370492-165
Intrinsic safety w/o External zero/span adjustment		Burnout down	1set	80370492-515
		Burnout up	1set	80370492-525
		Burnout (NA)	1set	80370492-535
Intrinsic safety w/ External zero/span adjustment		Burnout down	1set	80370492-545
		Burnout up	1set	80370492-555
		Burnout (NA)	1set	80370492-565
Standard w/o External zero/span adjustment	Fluorine oil	Burnout down	1set	80370492-110
		Burnout up	1set	80370492-120
		Burnout (NA)	1set	80370492-130
Standard w/ External zero/span adjustment		Burnout down	1set	80370492-140
		Burnout up	1set	80370492-150
		Burnout (NA)	1set	80370492-160
Intrinsic safety w/o External zero/span adjustment		Burnout down	1set	80370492-510
		Burnout up	1set	80370492-520
		Burnout (NA)	1set	80370492-530
Intrinsic safety w/ External zero/span adjustment		Burnout down	1set	80370492-540
		Burnout up	1set	80370492-550
		Burnout (NA)	1set	80370492-560

Meter Body Assembly

(3)Meter Body Assembly Parts List (Continued)

Table(b) : Process flange : HP side

Key No.	Description	Quantity	Part No.
2	Process Flange, Rc1/4, C.S. Zn Plated	1	80276386-001
	Process Flange, Rc1/4, SCS14A*1	1	80276386-002
	Process Flange, Rc1/4, C.S. Ni Plated	1	80276386-901
	Process Flange, 1/4NPT, C.S. Zn Plated	1	80276386-003
	Process Flange, 1/4NPT, SCS14A*1	1	80276386-004
	Process Flange, 1/4NPT, C.S. Ni Plated	1	80276386-903
	Process Flange, Rc1/4, C.S. Zn Plated, for side vent type	1	80277257-001
	Process Flange, Rc1/4, SCS14A*1 for side vent type	1	80277257-002
	Process Flange, Rc1/4, C.S. Ni Plated for side vent type	1	80277257-901
	Process Flange, 1/4NPT, C.S. Zn Plated for side vent type	1	80277257-003
	Process Flange, 1/4NPT, SCS14A*1 for side vent type	1	80277257-004
	Process Flange, 1/4NPT, C.S. Ni Plated for side vent type	1	80277257-903

*1:SCS14A(Equivalent to SUS316) or SUSF316

Table(c) : Vent plug & Vent bushing

Key No.	Applicable Model No.	Quantity	Part No.
8	Rc1/4, SUS316, St'd	1	80277977-001
	1/4NPT, SUS316, St'd	1	80277977-002
	Rc1/4, SUS316, Long type	1	80277977-005
	1/4NPT, SUS316, Long type	1	80277977-006

Table(d) : Flange adapter

Key No.	Connection	Quantity	Part No.
11	Rc1/2, SCS14A*1	1	80370611-011
	1/2NPT, SCS14A*1	1	80370611-001
	Rc1/4, SCS14A*1	1	80370611-012
	1/4NPT, SCS14A*1	1	80370611-002

*1:SCS14A(Equivalent to SUS316) or SUSF316

FEP Protective diaphragm

1.FEP protective diaphragm with grease and operation manual.

STE9□□

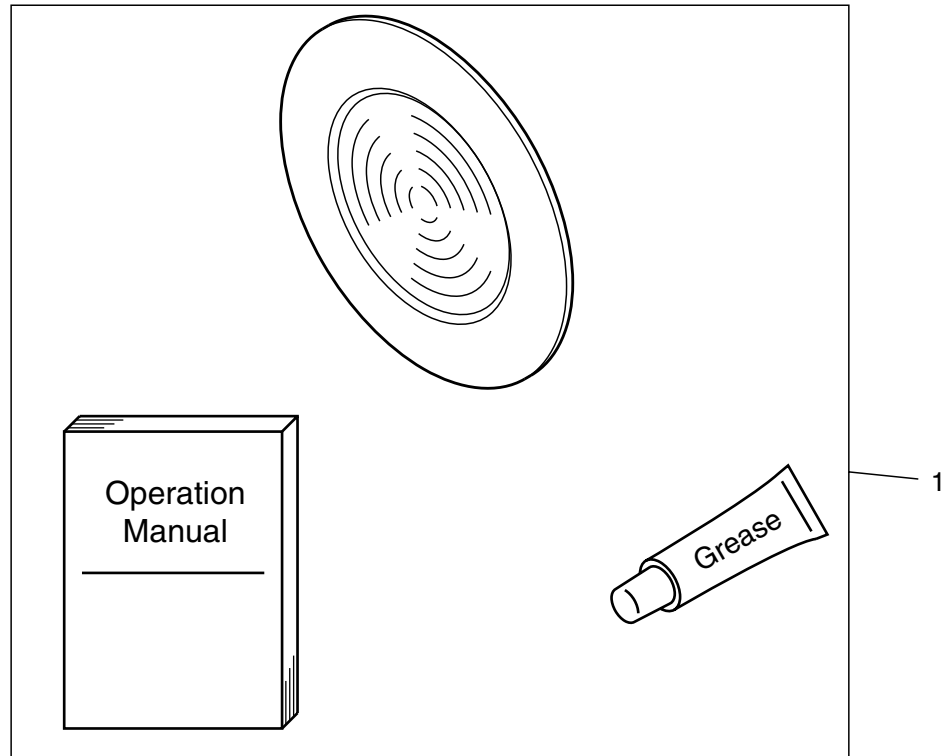
STR9□□

STH9□□

STU9□□

STC9□□

STF9□□



(4)FEP Protective diaphragm Parts List (Continued)

Key No.	Diaphragm size	Flange size	Description	Quantity	Part No.
1	ϕ 90	3"/80mm	For STE,STR	2	80277987-001
		3"/80mm	For STH,STU	1	80277987-002
	ϕ 63.8	2"/50mm	For STU (Wafer type)	1	80277987-003
	ϕ 60	3"/80mm	For STF	1	80277987-004
		2"/50mm	For STE(w/o HastelloyC)	2	80277987-010
			For STH(w/o HastelloyC),STC(tantalum)	1	80277987-011
	ϕ 40	2"/50mm	For STE (HastelloyC)	2	80277987-005
			For STH(HastelloyC),STC(w/o Tantalum)	1	80277987-006
		1.5"/40mm	For STE	2	80277987-007
			For STH,STC	1	80277987-008
		3"/80mm	For STC	1	80277987-009

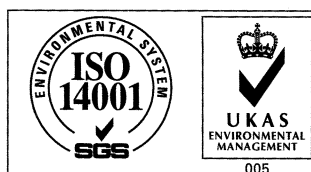
Yamatake Corporation

Totate International Building
2-12-19 Shibuya
Shibuya-ku, Tokyo 150-8316
Japan

Tel : 81-3-3486-2310
Fax : 81-3-3486-2593



Certificate No. Q17862



Certificate No. E8318
For Shonan Factory

YAMATAKE
Savemation

Saving through Automation