

MSG-S900

Operation manual

1. New Project File

The file for data preservation is created first. If the NEW button is clicked, the file appointed screen would open. Please specify a preservation place folder and a file name and push the O.K. button. A DATA ENTRY screen opens.



2. Correction of data

The Edit button is clicked when correcting the existing data. If a button is clicked, the file appointed screen would open. Please specify a file to correct and push the O.K. button. A Data ENTRY screen opens.

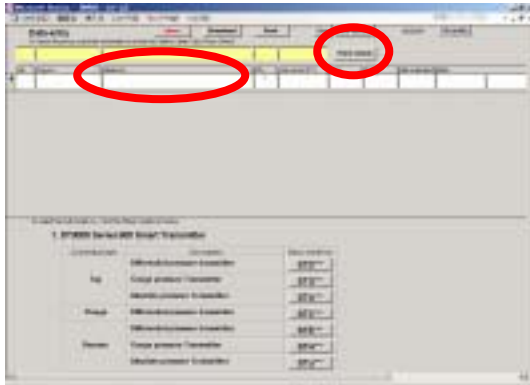


3. Price Calculation

The price of a standard model number is computed at list price in yen. The price of the special specification, which has Z, etc. in a model number, is not computed.

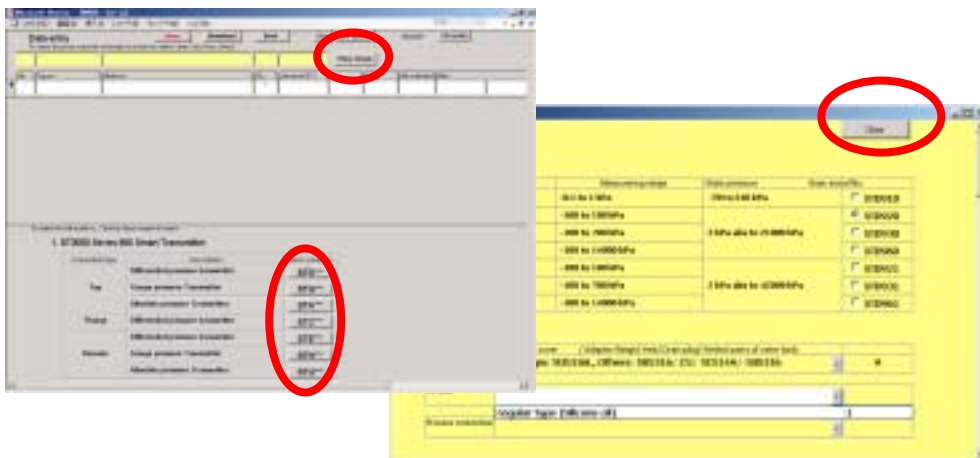
When the model number is known:

Please input a full model number into the MODEL column, and push the price button.



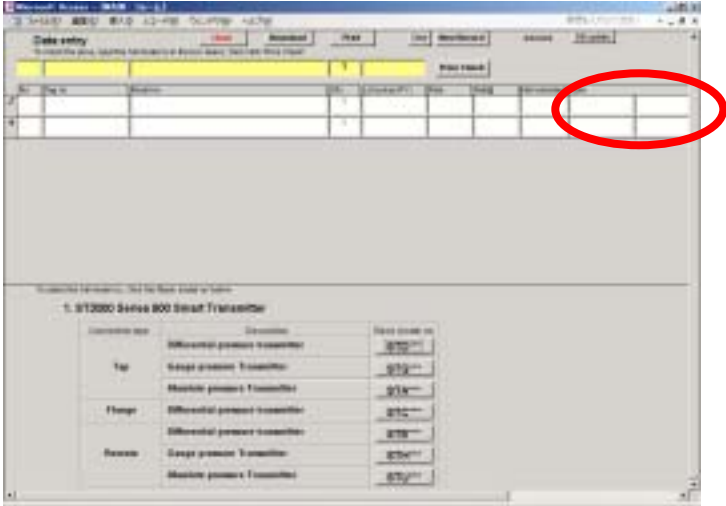
When a model number is not known:

Please determine a basic model number from the table under a screen, and push the button of a basic model number. A model number selection screen appears. If required specification is chosen on the model number selection screen, a full model number will be created. If the Price button of a data entry screen is pushed and the price comes out, please close a model number selection screen.



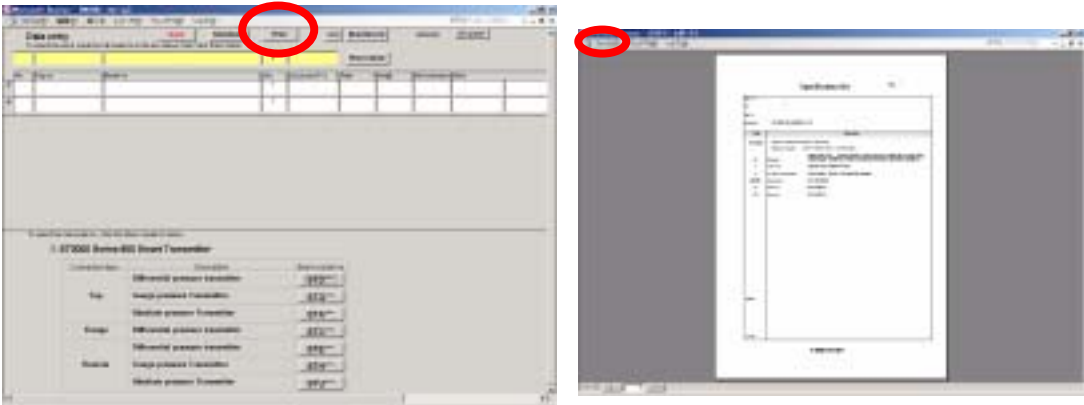
4. Special Specification

Please enter explanation of special specification in the note column of three lines.



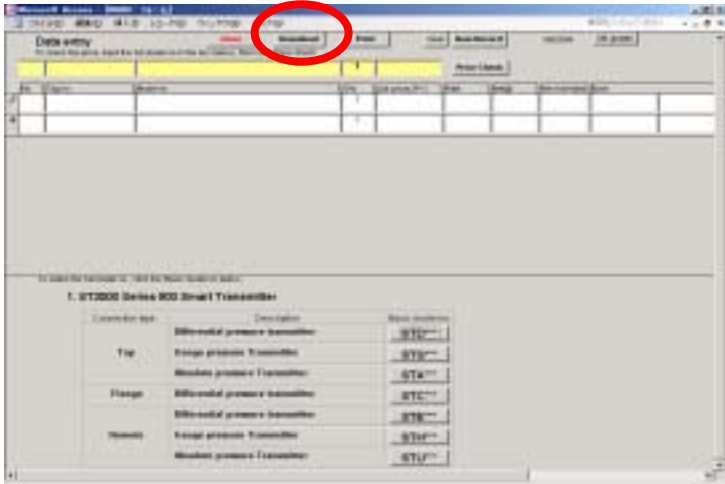
5. Printing of Data Sheet

Please choose an item to print on a data entry screen, and push the Print button. A print preview screen opens. A push on a printer button prints a data sheet.



6. XLS Download

An item list of a data entry screen is downloadable to Excel. Please push a download button, specify a file name and push the O.K. button.



7. Update of Price Database

Please download the database file of a price from IBNET and preserve in the same holder as this program file. A push on the update button of a data entry screen updates a price database. It is completion if the date is changed.

