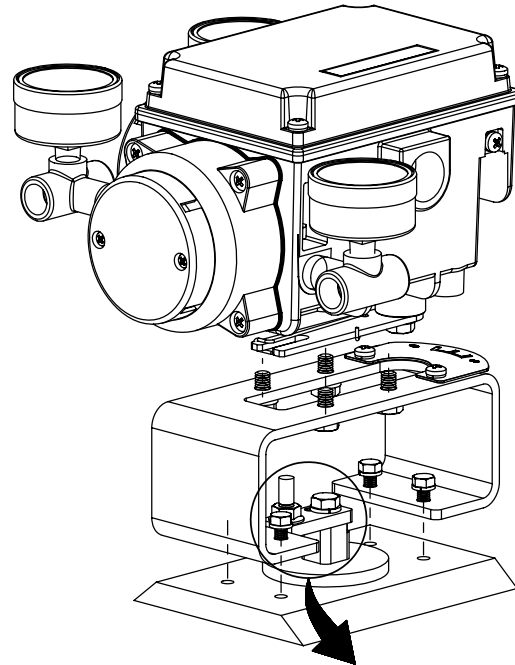


The followings are some typical examples of mounting SVX100 fork lever type to rotary actuator

Overview figure



Detail figure for feedback lever

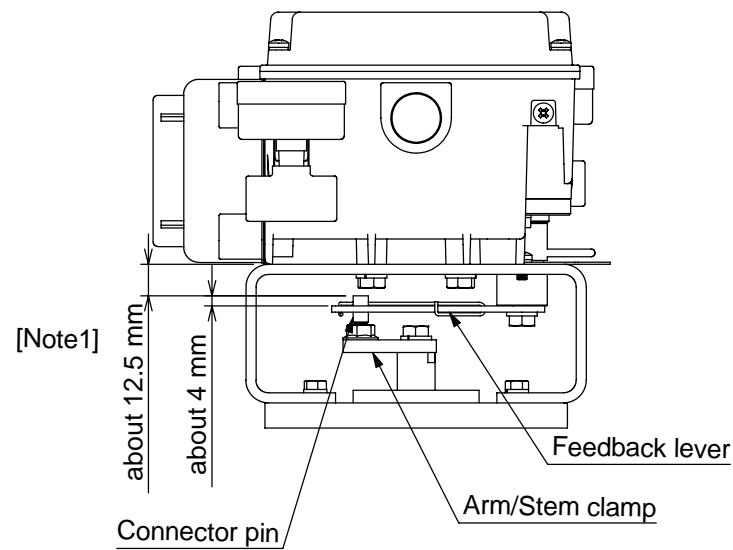


Fig.1 Side view of SVX

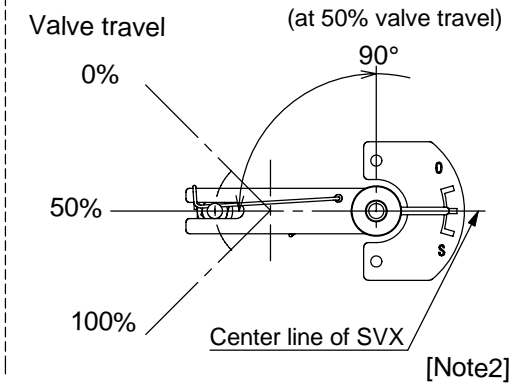
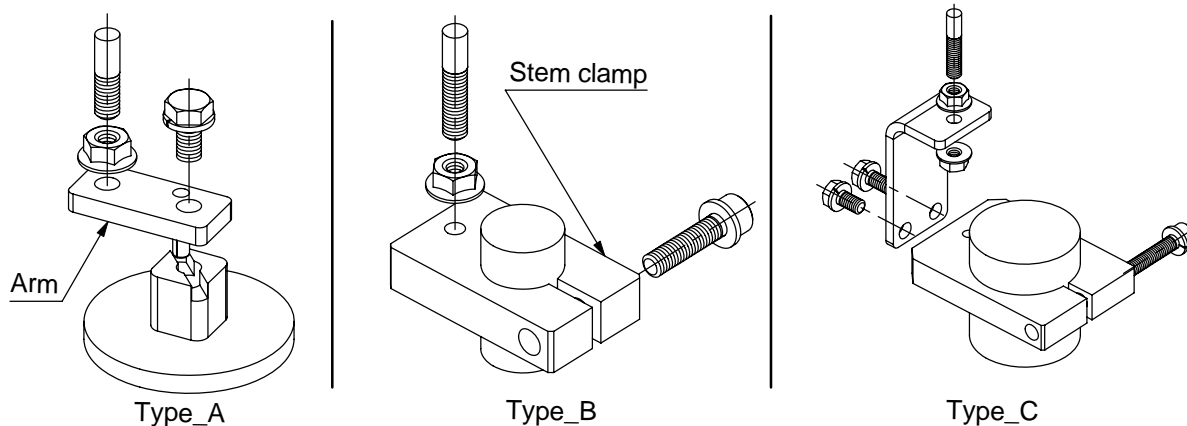


Fig.2 Feedback lever assembly

Detail figure for connector pin



[Note]

1. Please check after attachment that a feedback lever and a connector pin are properly connected as shown in Fig.1.
2. SVX should be mounted so that feedback lever comes in parallel with center line of SVX as shown in Fig.2.
3. Screws should be tightend referring to the table of tightening torque.

Tightening torque for stainless screw

Size	M5	M6	M8	M10	M12
Tightening torque [N·m]	4.5	7.5	18	37	63