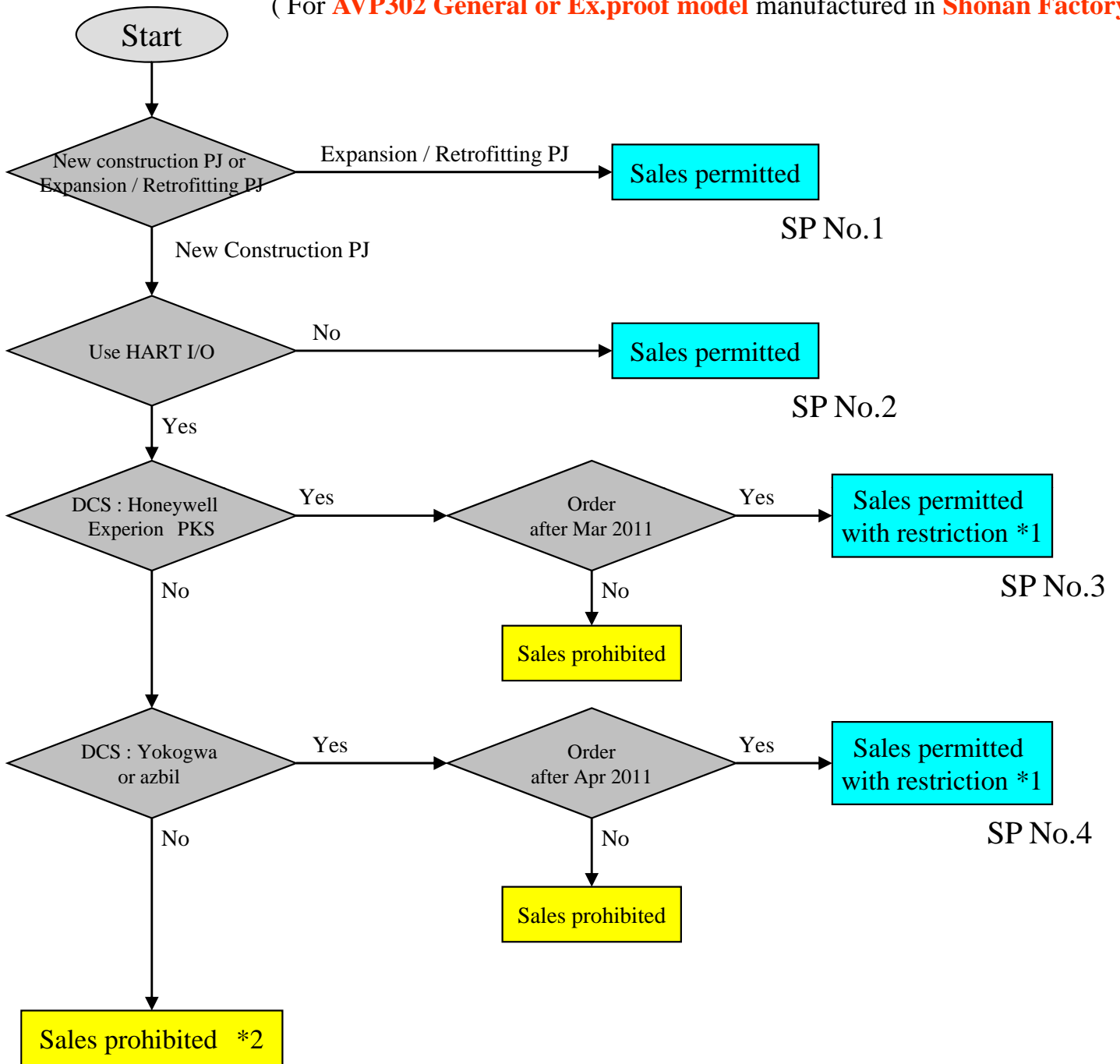


# HART AVP sales self-judge flow chart

( For **AVP302 General or Ex.proof model** manufactured in **Shonan Factory** )



\*1 Multiple host issue still remains until permanent measure model is released.

Until then, please notify following restriction information to HART AVP users.

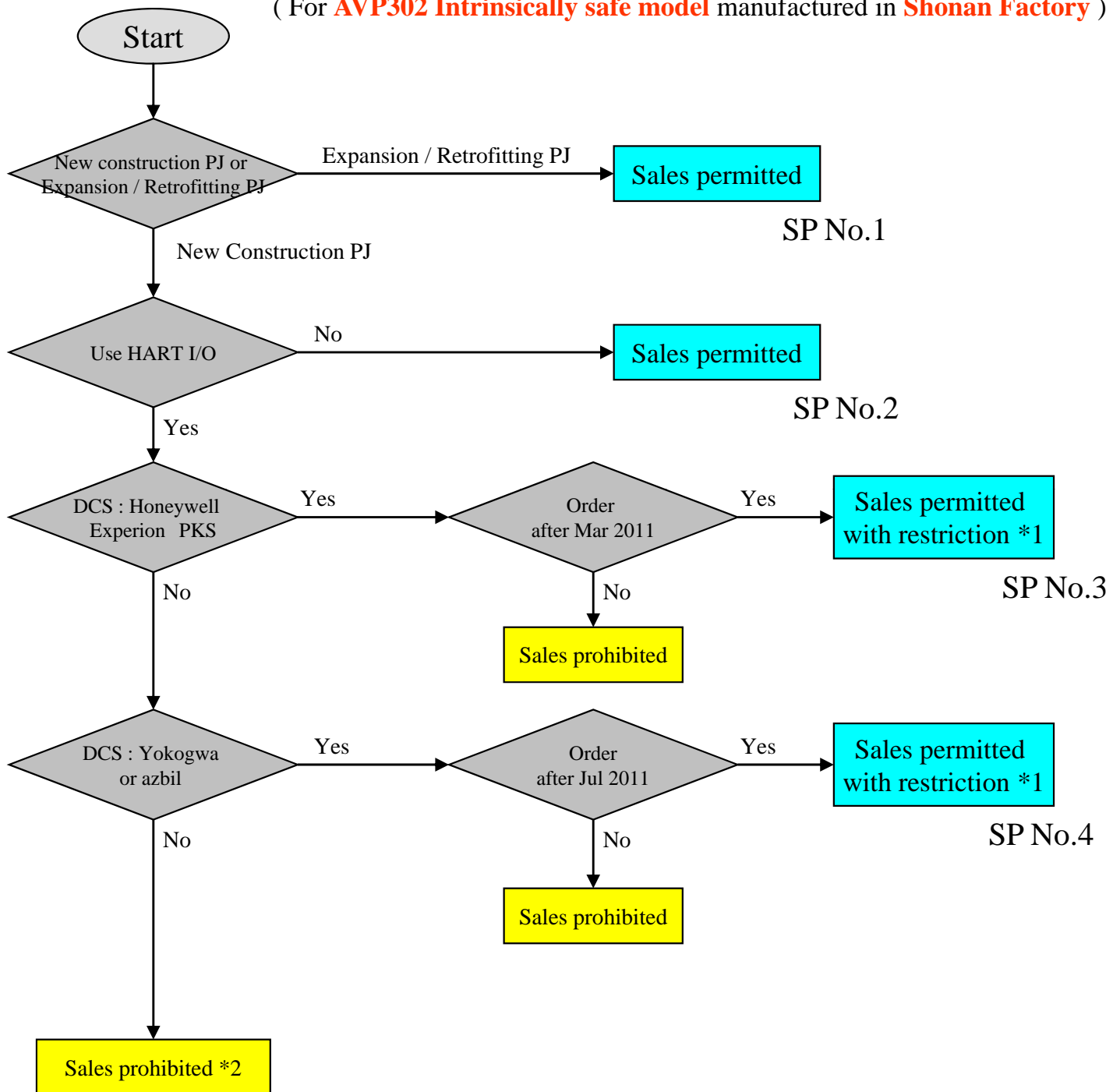
“When you use HART communicator or similar device as the secondary HART host to your system, please suspend HART communication between primary HART host in DCS and HART AVP before using the secondary HART host.”

\*2 Release of permanent measure model that can be used with whole DCS in the market is planned in Dec 2011.

But the order cannot be accepted because detailed release schedule of whole renewed safety approval is not clear as of May 2011. Please refrain an order that needs combination with unknown DCS for the moment.

# HART AVP sales self-judge flow chart

( For **AVP302 Intrinsically safe model** manufactured in **Shonan Factory** )



\*1 Multiple host issue still remains until permanent measure model is released.

Until then, please notify following restriction information to HART AVP users.

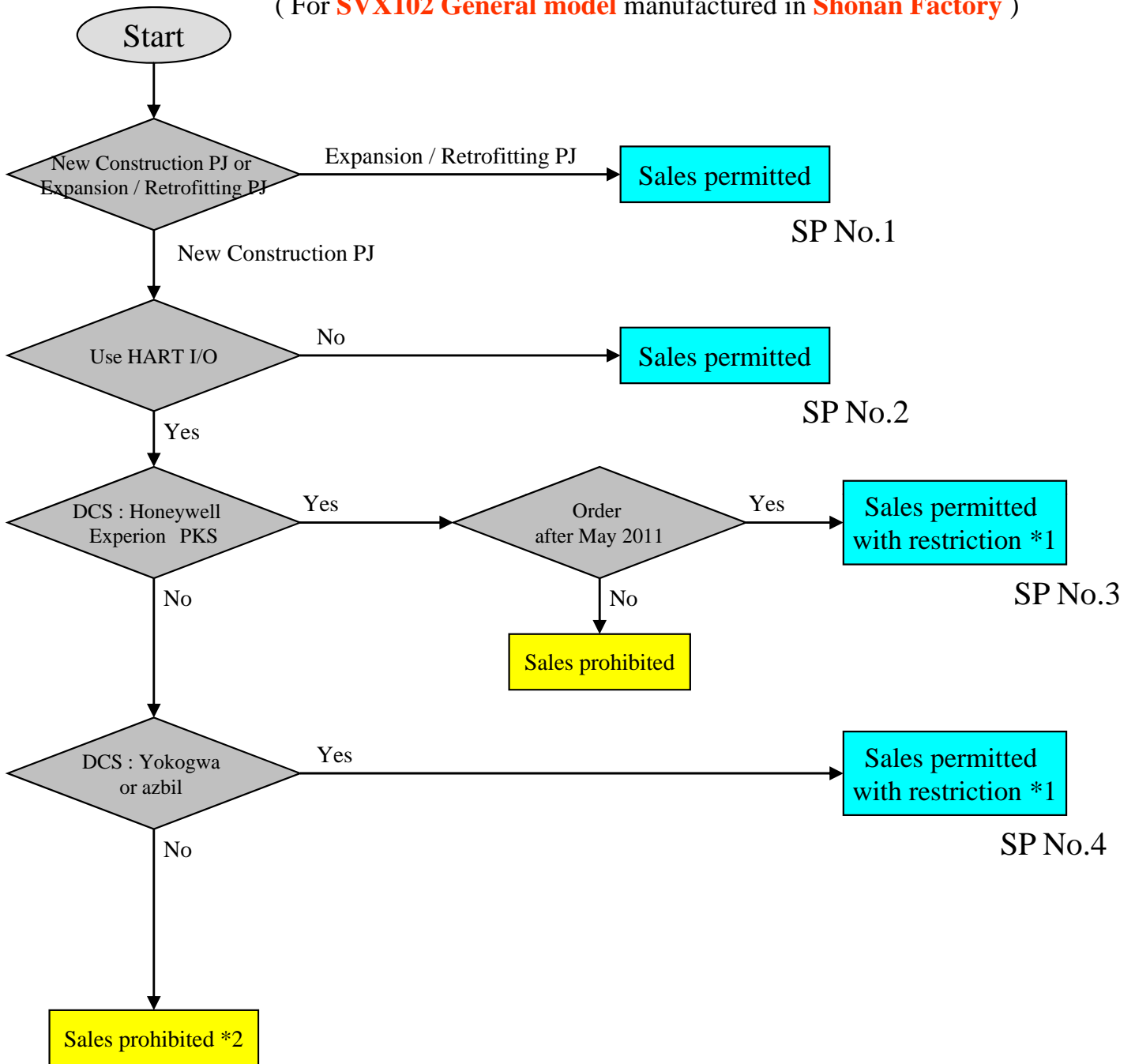
“When you use HART communicator or similar device as the secondary HART host to your system, please suspend HART communication between primary HART host in DCS and HART AVP before using the secondary HART host. “

\*2 Release of permanent measure model that can be used with whole DCS in the market is planed in Apr 2012.

But the order cannot be accepted because detailed release schedule of whole renewed safety approval is not clear as of May 2011. Please refrain an order that needs combination with unknown DCS for the moment.

# HART AVP sales self-judge flow chart

( For **SVX102 General model** manufactured in **Shonan Factory** )



\*1 Multiple host issue still remains until permanent measure model is released.

Until then, please notify following restriction information to HART AVP users.

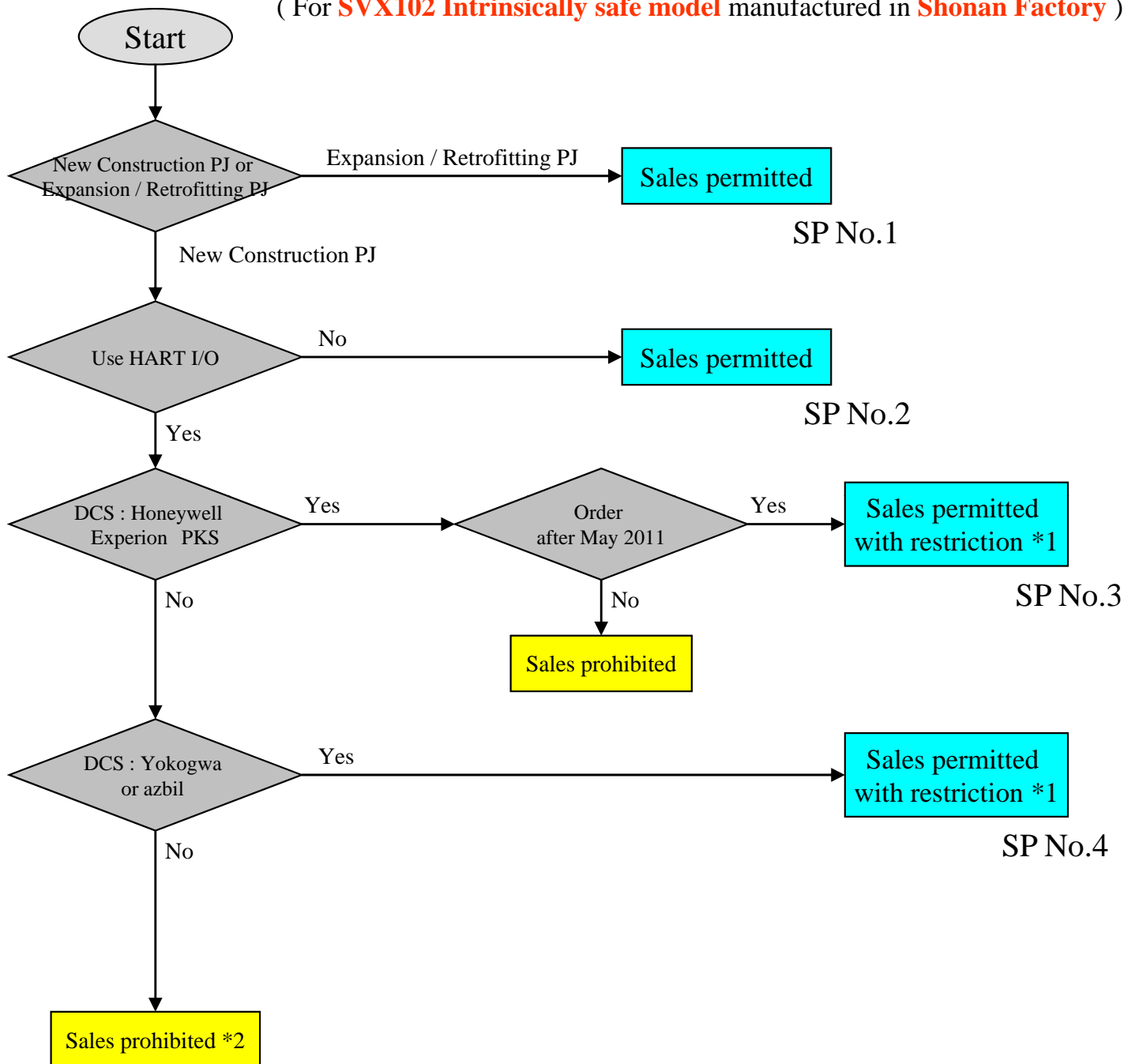
“When you use HART communicator or similar device as the secondary HART host to your system, please suspend HART communication between primary HART host in DCS and HART AVP before using the secondary HART host. “

\*2 Release of permanent measure model that can be used with whole DCS in the market has not been decided as of May 2011.

Please refrain an order that needs combination with unknown DCS for the moment.

# HART AVP sales self-judge flow chart

( For **SVX102 Intrinsically safe model** manufactured in **Shonan Factory** )



\*1 Multiple host issue still remains until permanent measure model is released.

Until then, please notify following restriction information to HART AVP users.

“When you use HART communicator or similar device as the secondary HART host to your system, please suspend HART communication between primary HART host in DCS and HART AVP before using the secondary HART host. “

\*2 Release of permanent measure model that can be used with whole DCS in the market has not been decided as of May 2011.

Please refrain an order that needs combination with unknown DCS for the moment.