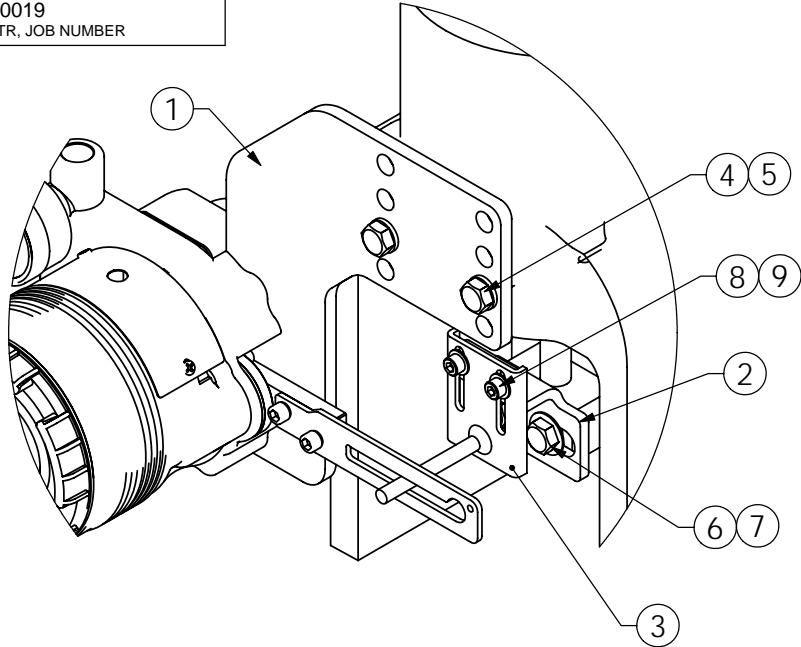
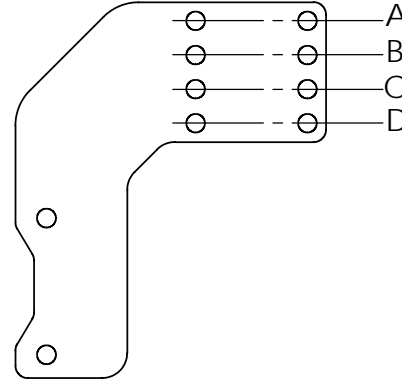


LOC	MARKING DATA
1	US300019 REV. LTR, JOB NUMBER

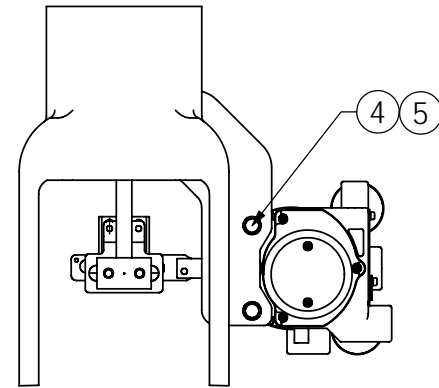
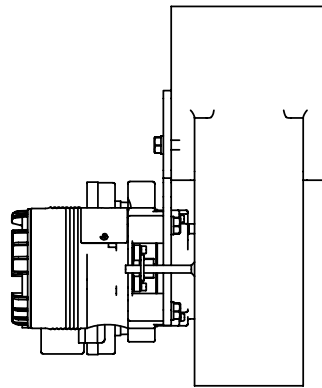
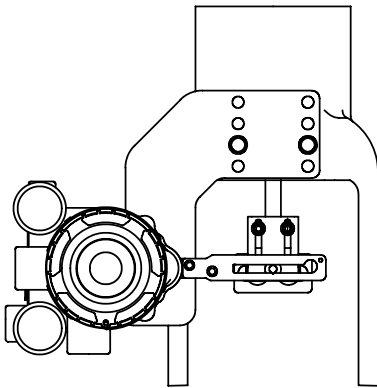


HOLE SET



ACTUATOR MODEL	SIZE	HOLE SET CODE
657	30	C
	34	C
	40	B
	45	A
	50	A
	60	A
667	30	D
	34	B
	40	C
	45	A
	50	B
	60	B

USE HOLE SET SHOWN IN THE TABLE WHEN MOUNTING ITEM ① ON THE ACTUATOR.
(May not applicable when actuator is oversized for the valve size)



1. THE BRACKET KIT IS FOR FISHER 657/667 SIZE 30 THROUGH 60 WITHOUT SIDE HAND MANUAL.

△	X	RELEASED DRAWING	11/14/01	Ken	X
REV.	ECN/ECR	DESCRIPTION	DATE	BY	APPRD

REVISION					
THE INFORMATION CONTAINED IN THIS DRAWING IS THE SOLE PROPERTY OF YCV CORPORATION. ANY REPRODUCTION IN PART OR WHOLE WITHOUT THE WRITTEN PERMISSION OF YCV CORPORATION IS STRICTLY PROHIBITED.					

UNLESS OTHERWISE SPECIFIED DIMENSIONS ARE IN INCHES TOLERANCES ARE:
X= ±.030
XX= ±.015
XXX= ±.005
ANGULAR= ±1°
MACHINED SURFACES TO HAVE 125 RMS FINISH
CONCENTRICITY= ±.002 T.I.R.
BREAK ALL SHARP EDGES

SOLIDWORKS CUSTOMER GENERATED DRAWING. DO NOT MANUALLY UPDATE

APPROVALS	DATE
DRAWN Ken	11/14/01
CHECKED	
APPROVED	

Yamatake America, Inc.
TITLE
SVP Bracket Assembly
for Fisher 657/667
Size 30 to 60

DO NOT SCALE DRAWING

W/O. NUMBER	SCALE: NTS	DWG. NO. US300019-Item	REV. A
-------------	------------	----------------------------------	------------------

LOC	MARKING DATA
1	US300019 REV. LTR, JOB NUMBER

Key No.	Item	DWG No.	Description	Qty	Note
1	701	US320024-101	SVP Bracket	1	Material C.S.
	801	US320024-103			Material 316 SS
2	701	US340015-101	SVP Connector Plate	1	Material C.S.
	801	US340015-103			Material 316 SS
3	ALL	80357142-001	Feedback Pin Ass'y	1	
4	ALL	HCS-S188-5/16-18X3/4	Hex Cap Screw 5/16" X3/4" Long	4	
5	ALL	SLW-S188-5/16	Split Lock Washer 5/16"	4	
6	ALL	HCS-S188-5/16-18X1.50	Hex Cap Screw 5/16" X1-1/2" Long	2	for Actuator Size 30 to 40
	ALL	HCS-S188-3/8-16X2.00	Hex Cap Screw 3/8" X2" Long	2	for Actuator Size 45 to 60
7	ALL	FTW-S188-5/16	Flat Washer 5/16"	2	for Actuator Size 30 to 40
	ALL	FTW-S188-3/8	Flat Washer 3/8"	2	for Actuator Size 45 to 60
8	ALL	SCS-S188-N010-24X3/8	Socket Cap Screw #10 X3/8" Long	2	
9	ALL	FTW-S188-N010	Flat Washer #10	2	

△	X	RELEASED DRAWING	11/14/01	Ken	X
REV.	ECN/ECR	DESCRIPTION	DATE	BY	APPRD

REVISION

THE INFORMATION CONTAINED IN THIS DRAWING IS THE SOLE PROPERTY OF YCV CORPORATION. ANY REPRODUCTION IN PART OR WHOLE WITHOUT THE WRITTEN PERMISSION OF YCV CORPORATION IS STRICTLY PROHIBITED.

UNLESS OTHERWISE SPECIFIED DIMENSIONS ARE IN INCHES
TOLERANCES ARE:
X= ±.030
XX= ±.015
XXX= ±.005
ANGULAR= ±1°
MACHINED SURFACES TO HAVE 125 RMS FINISH
CONCENTRICITY= ±.002 T.I.R.
BREAK ALL SHARP EDGES

DO NOT SCALE DRAWING

SOLIDWORKS CUSTOMER GENERATED DRAWING. DO NOT MANUALLY UPDATE

APPROVALS	DATE
DRAWN Ken	11/14/01
CHECKED	
APPROVED	

W.O. NUMBER

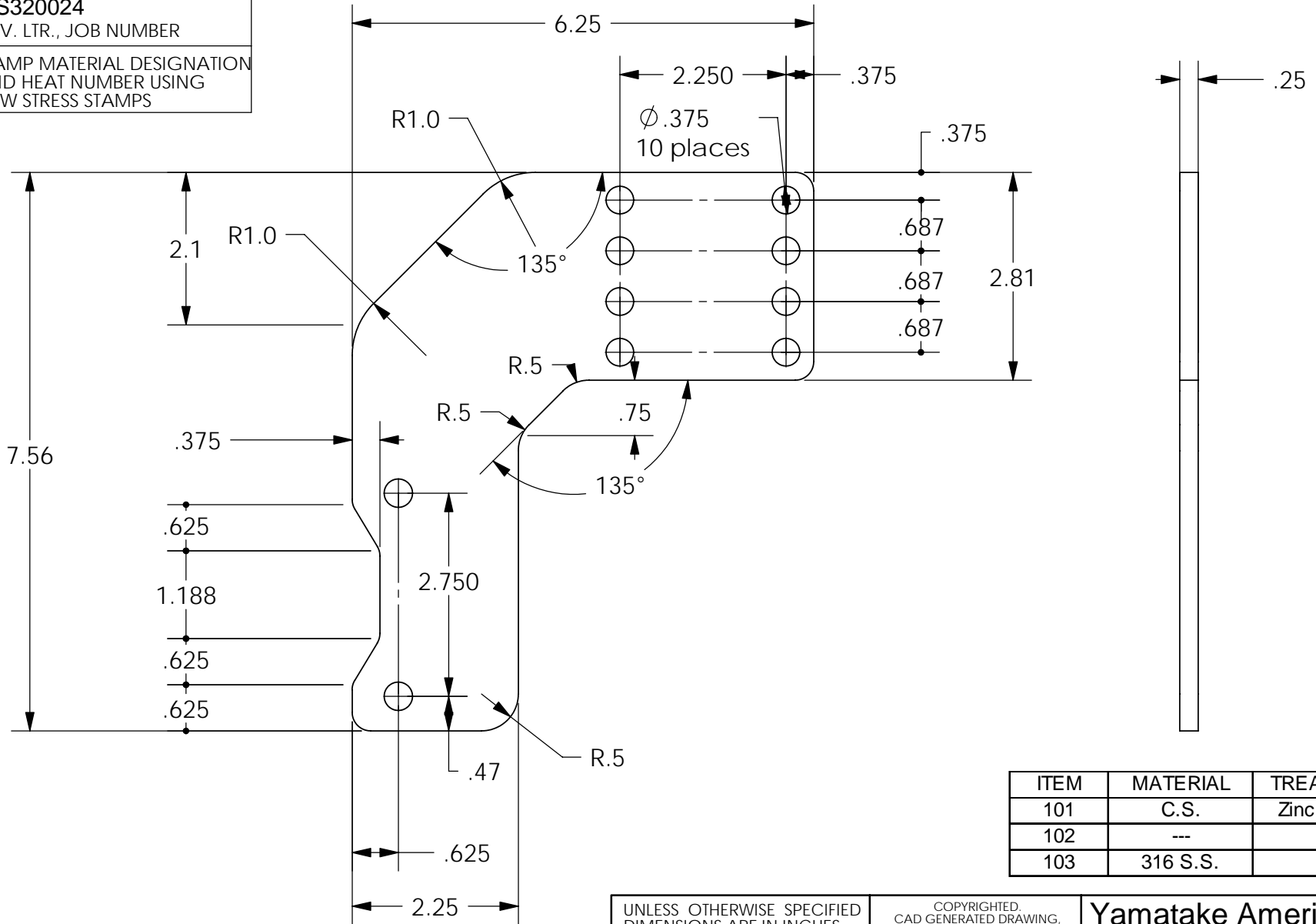
Yamatake America, Inc.

TITLE
SVP Bracket Assembly
for Fisher 657/667
Size 30 to 60

SIZE DWG. NO. REV.
B **US300019-Item** **A**

SCALE: NTS SHEET 2 OF 2

LOC	MARKING DATA
1	US320024 REV. LTR., JOB NUMBER
2	STAMP MATERIAL DESIGNATION AND HEAT NUMBER USING LOW STRESS STAMPS



1. Corner radii 0.25" unless otherwise specified.

UNLESS OTHERWISE SPECIFIED
DIMENSIONS ARE IN INCHES
TOLERANCES ARE:
.X= ±.030
.XX= ±.015
.XXX= ±.005
ANGULAR= ±1°
MACHINED SURFACES TO HAVE
125 RMS FINISH
CONCENTRICITY= ±.002 T.I.R.
BREAK ALL SHARP EDGES

APPROVALS		DATE
DRAWN	Ken	8/20/01
CHECKED		
RESP ENG		
APPROVED		
JOB NUMBER		

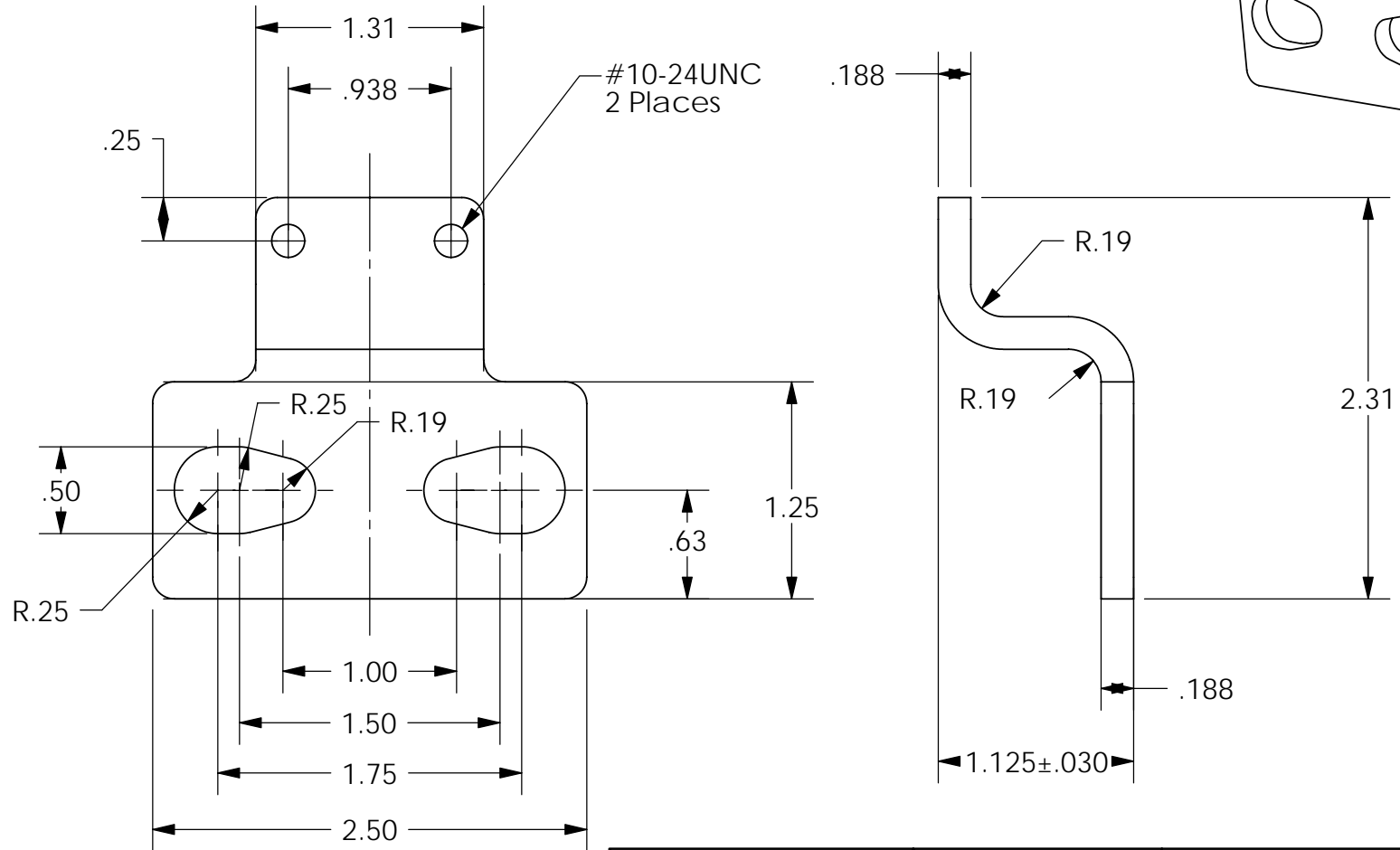
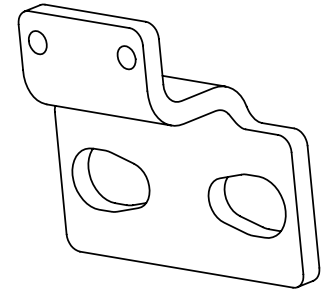
Yamatake America, Inc.		
TITLE		REV.
SVP Bracket for Fisher 657/667 Size 30 to 60		A
SIZE	DWG. NO.	
A	US320024-ITEM	
SCALE: NTS	SHEET 1 OF 1	

REV	ECN	DESCRIPTION	DATE	INTL	APPRD
X		RELEASED DRAWING	8/20/01	Ken	x
REVISION					
THE INFORMATION CONTAINED IN THIS DRAWING IS THE SOLE PROPERTY OF YCV CORPORATION, ANY REPRODUCTION IN PART OR WHOLE WITHOUT THE WRITTEN PERMISSION OF YCV CORPORATION IS STRICTLY PROHIBITED.					

DO NOT SCALE DRAWING

LOC	MARKING DATA
1	US340015 REV. LTR., JOB NUMBER
2	STAMP MATERIAL DESIGNATION AND HEAT NUMBER USING LOW STRESS STAMPS

ITEM	MATERIAL	TREATMENT
101	C.S.	Zinc Plating
102	---	---
103	316 S.S.	---



1. Corner radius 0.125" unless otherwise specified.

UNLESS OTHERWISE SPECIFIED
DIMENSIONS ARE IN INCHES
TOLERANCES ARE:
.X= ±.030
.XX= ±.015
.XXX= ±.005
ANGULAR= ±1°
MACHINED SURFACES TO HAVE
125 RMS FINISH
CONCENTRICITY= ±.002 T.I.R.
BREAK ALL SHARP EDGES

COPYRIGHTED CAD GENERATED DRAWING, DO NOT MANUALLY UPDATE	
APPROVALS	DATE
DRAWN Ken	8/20/01
CHECKED	
RESP ENG	
APPROVED	
JOB NUMBER	

Yamatake America, Inc.	
TITLE	SVP connector plate for Fisher 657/667 Size 30 to 60
SIZE	DWG. NO. US340015-ITEM
SCALE: NTS	REV. A
SHEET 1 OF 1	

REV	ECN	DESCRIPTION	DATE	INTL	APPRD
X		RELEASED DRAWING	8/20/01	Ken	x
REVISION					
THE INFORMATION CONTAINED IN THIS DRAWING IS THE SOLE PROPERTY OF YCV CORPORATION, ANY REPRODUCTION IN PART OR WHOLE WITHOUT THE WRITTEN PERMISSION OF YCV CORPORATION IS STRICTLY PROHIBITED.					

DO NOT SCALE DRAWING