

## Specifications

### Indicating section

Input: 0.2 – 1.0 kg/cm<sup>2</sup>

Deviation indication: Span;  $\pm 20\%$  FS  
Accuracy;  $\pm 0.5\%$  FS  
Repeatability; Within 0.2% FS  
Dead band; Within 0.1% FS

### Set-point section

Set-point setting: Cascade type (0.2 – 1.0 kg/cm<sup>2</sup> signal or signal from set-point transmitter. PV indication can be read by PV check knob operation on cascade mode.)

Repeatability; Within 0.2% FS

Scale length: 190mm

Visible scale length: 85 mm

### Manual control unit

Valve meter: Scale; 0 – 100% (20 even div.)

Accuracy;  $\pm 3.0\%$  FS

Repeatability; Within 0.5% FS

Auto-Man. transfer: Balanceless-bumpless

Output air capacity: 50 NI/min.

### Control unit

Output: 0.2 – 1.0 kg/cm<sup>2</sup>

Type of control: P (Semi-standard option), PI, PI (Batch control) and PID

### Controller performance:

Proportional band (P); 5 – 50 or 50 – 500% transferable.

Integral (I); 0.02 – 50 min.

Derivative (D); 0.02 – 50 min.

Output air capacity: 50 NI/min.

Air supply: 1.4  $\pm$  0.14 kg/cm<sup>2</sup>

Air consumption: 13 NI/min. (At balanced state)

Operating conditions: Temperature; 0 – 50°C

Humidity; 10 – 90% RH

Mounting: Indoor panel mounting.

Mounting angle: Up to 75° case rear down from horizontal.

Net weight: Approx. 7.5 kg

### Color finish:

Bezel; Dark beige (Munsell 10YR 4.7/0.5)

Front mask; Light gray (Munsell N7)

Lower mask; Aluminic silver

Case; Dark beige (Munsell 10YR 4.7/0.5)

Connections: Air; PT $\frac{1}{4}$  (ISO R7  $\frac{1}{4}$ " ) or NPT  $\frac{1}{4}$  tap thread

Electric; M 3.5 mm screws

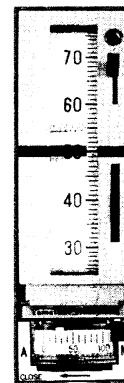
Dimension: 152.3 H x 50.7 W x 600 D (mm)

## VUMATIK

## VERTICAL SCALE DEVIATION INDICATOR CONTROLLER

### CASCADE SET-POINT

MODEL ; NUS 0



NUS 0

### Options

Following options are available.

Item (1), (2) are the standard options.

#### (1) Lamp (1-set)

Number of lamp: 2-lamp (Can be divided into two sections).

Rating: 24 V, 40 mA / lump

#### (2) Monitor switch (With a lamp set)

Number of alarm:  $\left\{ \begin{array}{l} \text{PV 1 pt.} \\ \text{PV 2 pts.} \\ \text{Deviation 1 pt.} \end{array} \right.$

Setting span:  $\left\{ \begin{array}{l} 0 \sim 100\% \text{ FS (PV monitor)} \\ 100 \sim 0 \sim 100\% \text{ FS (Dev. monitor)} \end{array} \right.$

$\left\{ \begin{array}{l} \text{Remark; Minimum 10\% FS clearance is} \\ \text{required between the lowest value of Hi} \\ \text{limit and the highest value of Lo limit.} \end{array} \right.$

Differential gap: Within 0.5% FS

Repeatability: Within 0.3% FS

Output contact rating: AC 250V, 4A

Item (3), (4) are the semi-standard options.

#### (3) Front mask semi-standard color (Y 100A, B, D, E)

#### (4) Make-up bottom unit (Y 120A, B)

With output gage (Y 120A),

Blind (Y 120B)

**Yamatake-Honeywell Co. Ltd.**  
Process Control Division

Sales Headquarters : Nagai International Bldg., 12-19, Shibuya 2 chome, Shibuya-ku, Tokyo, 150 Japan  
Tel : (03) 409-7171 Telex : J22902 Cable : YAMATAKE CO

