

Vumatik 8000 Recorder Model NUXB

Specifications

Recording and indicating section

Input: 0.2–1.0 kgf/cm² or 3 – 15 psi

Number of record: 1-pen (red), 2-pen (red and blue),
3-pen (red, blue and green)

Scale length: 101.6mm

Indicating: Accuracy; $\pm 0.5\%$ FS
Repeatability; Within 0.2% FS
Dead band; Within 0.2% FS

Pen speed: 3–15 s/FS adjustable

Chart: Width; 101.6 mm

Type; Strip, roll or fold

Length; Roll type – 15 m (30 days at 19mm/h)
Fold type – 7.5 m (15 days at 19mm/h)

Chart speed: 19 mm/h

Chart motor power supply: ~~AC 100, 110, 115, 120, 220 V~~
~~110V, 50/60Hz, 1.2VA~~ or AC 24V (Semi-standard option)

Power consumption: 3VA

Air supply: 1.4 ± 0.14 kgf/cm²

Minimum load: ID4 mm \times 3 m + 20 cm³

Air consumption: 3 NI/min (3-pen recorder)

Operating conditions: Temperature; 0–50°C
Humidity; 10–90% RH

Mounting: Indoor panel mounting.

Mounting angle: Up to 60° case rear down from horizontal.

Color finish: Bezel; Dark beige (Munsell 10YR 4.7/0.5)

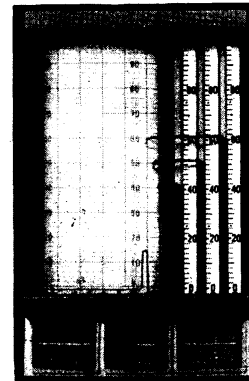
Lower mask; Aluminic silver

Case; Dark beige (Munsell 10YR 4.7/0.5)

Connections: Air; Rc $\frac{1}{4}$ or $\frac{1}{8}$ NPT internal thread

Electric; M 3.5 mm screws

Net weight: 8 kg (3–pen)



NUXB 30

Options

Following options are available.

Item (1), (2) are the standard options.

(1) Lamp (3-set max.)

Rating: 24 V, 40 mA/lamp

Number of lamp: 6-lamp max. (Can be divided into two section each other.)

(2) Monitor switch (With a lamp set)

Number of alarm: PV; 1- or 2-point on No. 1 PV

Setting span: 0–100% FS

Differential gap: Within 0.5% FS

Repeatability: Within 0.5% FS

Output contact rating: AC 250V, 4 A

Item (3)–(6) are the semi-standard options.

(3) Chart speed selection (Y 55A, B, C)

St'd speed \times 2; 38 mm/h (Y 55A)

St'd speed \times 3; 57 mm/h (Y 55B)

St'd speed \times 4; 76 mm/h (Y 55C)

(4) Chart motor power supply of AC 24V (Y 57A, B)

AC 24V 50 Hz (Y 57A), AC 24V 60 Hz (Y57B)

(5) Front mask semi-standard color (Y 100A, B, D, E)

(6) Chart motor stop switch (Y 114A)

Model Number Table

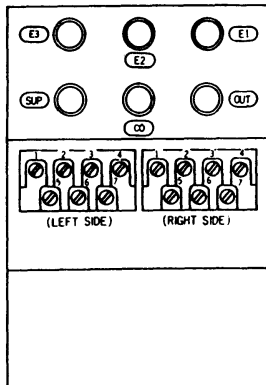
Basic Model No.	Selection	Option	Description
NUXB10			1-pen Recorder Controller
NUXB20			2-pen Recorder Controller
NUXB30			3-pen Recorder Controller
	-1		Chart Motor Power Supply: AC 220 V, 50 Hz
	-2		" : AC 220 V, 60 Hz
	-3		" : AC 100 V, 50 Hz
	-4		" : AC 100 V, 60 Hz
	-5		" : AC 110/115 V, 50 Hz
	-6		" : AC 110/115 V, 60 Hz
	-7		" : AC 120 V, 50 Hz
	-8		" : AC 120 V, 60 Hz
	-Y		" : AC 24 V (Semi-standard, Y57A or Y57B)
	R		Chart Type : Roll
	F		" : Fold
	A		Air Piping Connection : Rc $\frac{1}{4}$ Internal Thread
	B		" : $\frac{1}{4}$ NPT Internal Thread
	1		Pneumatic Signal Range : 0.2-1.0 kgf/cm ²
	2		" : 3-15 psi
	-X		No. Option
	-1		With a Lamp Set
	-2		With Two Lamp Sets
	-3		With Three Lamp Sets
	-6		With A Type Monitor Switch (Hi and Low on No. 1 PV, with a Lamp Set)
	-8		With A Type Monitor Switch (Hi on No. 1 PV, with a Lamp Set)
	-9		With A Type Monitor Switch (Low on No. 1 PV, with a Lamp Set)

Notes:

- When ordering "Y" semi-standard options, please write as: NUXB 10Y-3RA1-X (Y□).
- Front mask semi-standard color

Part Y-No.	Bezel	Lower Mask
Y 100A	Dark beige (10YR 4.7/0.5)	
Y 100B	Mist green (2.5G 5/1.5)	Alumic silver
Y 100D	Black (N 1.2)	Alumic silver
Y 100E	Jade green (2.5G 5/1.5)	Alumic silver

Connections



PNEUMATIC CONNECTIONS

SUP	1-PEN REC.	2-PEN REC.	3-PEN REC.
E1	PV	No. 1 PV	No. 1 PV
E2	-	No. 2 PV	No. 2 PV
E3	-	-	No. 3 PV

ELECTRIC CONNECTIONS

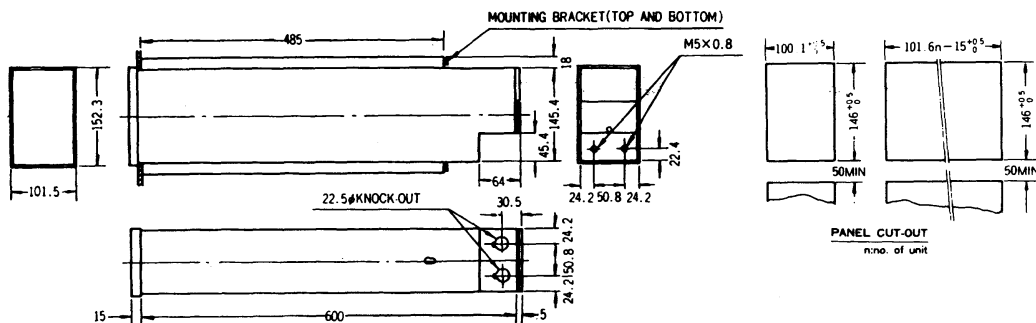
With 1 point Monitor and Lamp Set

(LEFT)	(RIGHT)
1 MONITOR OUT	1 UPPER OF No. 3 LAMP SET (-)
2 MONITOR COMMON	2 UPPER OF No. 2 LAMP SET (-)
3 MONITOR OUT	3 UPPER OF No. 1 LAMP SET (-)
4 -	4 COMMON OF LAMP SET (+)
5 CHART MOTOR	5 LOWER OF No. 3 LAMP SET (-)
6 CHART MOTOR	6 LOWER OF No. 2 LAMP SET (-)
7 GROUND	7 LOWER OF No. 1 LAMP SET (-)

With 2 point Monitor and Lamp Set

(LEFT)	(RIGHT)
1 MONITOR OUT (HI)	1 UPPER OF No. 3 LAMP SET (-)
2 MONITOR COMMON	2 UPPER OF No. 2 LAMP SET (-)
3 MONITOR OUT (LOW)	3 UPPER OF No. 1 LAMP SET (-)
4 -	4 COMMON OF LAMP SET (+)
5 CHART MOTOR	5 LOWER OF No. 3 LAMP SET (-)
6 CHART MOTOR	6 LOWER OF No. 2 LAMP SET (-)
7 GROUND	7 LOWER OF No. 1 LAMP SET (-)

Dimensions



* Specifications are subject to change without notice.

YAMATAKE CORPORATION

Sales Headquarters : Nagai International Bldg., 2-12-19 Shibuya, Shibuya-ku, Tokyo, 150 Japan
 Tel: (03) 486-2141 Telex: J22902 Cable: YAMATAKECO