

VumatiK 8000

Square Root Extractor

Model NOX500

The square root extractor receives a standard pneumatic signal of 0.2 ~ 1.0 kgf/cm² from differential pressure type transmitter, executes computation of square root extraction of the input signal, and transmits a pneumatic output signal of 0.2 ~ 1.0 kgf/cm² directly proportional to the measured flow.

Specifications

Input: 0.2~1.0 kgf/cm²

Output: 0.2~1.0 kgf/cm²

Computing equation:

$$P_0 = \sqrt{0.8} \sqrt{P_i} - 0.2 + 0.2$$

where P_0 : output, P_i : input

Accuracy: ±0.5% FS (Output 10 ~ 100% FS)

Dead band: Within 0.1% FS

Repeatability: Within 0.5% FS

Air supply pressure: 1.4±0.14 kgf/cm²

Air consumption: 7 Nl/min.

Air connection: Rc¼ or ¼ NPT internal thread

Output air capacity: 50 Nl/min.

Operating conditions:

Temperature; 0 ~ 50°C

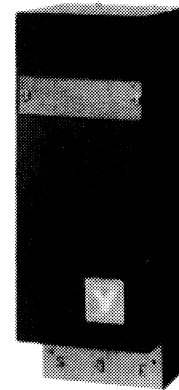
Humidity; 10 ~ 90% RH

Mounting: Vertical surface mounting.

Net weight: Approx. 1.7 kg

Finish: Dark beige (Munsell 10YR 4.7/0.5)

Dimension: 196H x 72W x 67D (mm)

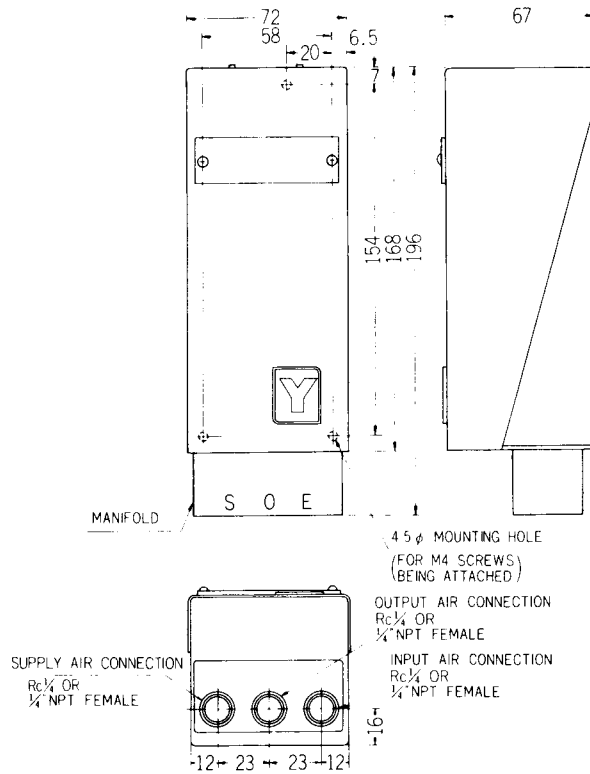


NOX500

Model Number Table

Basic Model No.	Mounting	Option	Description
NOX500			Square Root Extractor
	-S		Surface Mount Type
		-X	No Option

Dimensions & Connections



Specifications are subject to change without notice.

Yamatake Corporation

Totate International Building
2-12-19 Shibuya
Tokyo 150-8316
Tel : 81-3-3486-2506
Fax : 81-3-3486-2503

Yamatake-SIC Control Systems Co., Ltd.	: China	86-10-6326-9844/55
Shanghai Yamatake Jinshan Control Instruments Co., Ltd.	: China	86-21-5793-5334
Yamatake (Thailand) Co., Ltd.	: Thailand	66-2-210-0900~7
Yamatake Philippines, Inc.	: Philippines	63-2-817-6452
PT. Yamatake Berca Indonesia	: Indonesia	62-21-230-5537/5539
Yamatake Controls Singapore Pte. Ltd.	: Singapore	65-778-5966
YCV Corporation	: U.S.A.	1-602-548-1800

YAMATAKE

Savemation

Saving through Automation