

# Pneumatic Manual Loader Model NZ1

Pneumatic Manual Loaders are used for external set point adjustment on control station or for manually regulating a final element. Following models are available.

### Specifications

**Models:**

1. Manual Loader for Remote Control
2. Automatic/Manual Transfer Loader
3. Fixed Point Control Loader
4. Cascade Control Loader

**Component:**

- Pressure gage ;  $\phi 60$ , single or dual pointers
- Accuracy . . .  $\pm 1\%$  FS
- Scale range . . .  $0 \sim 100\%$  even or  $0 \sim 10 \sqrt{\quad}$  sq. rt
- Pressure regulator ; Precision type
- Transfer switch ;
  - 3-way 2- position (For AUT/MAN. Transfer Loader)
  - 8-way 4-position (For Fixed Point Control Loader)
  - 9-way 4-position (For Cascade Control Loader)

**Supply air:**  $1.4 \pm 0.1 \text{ kgf/cm}^2$

**Output:**  $0.2 \sim 1.0 \text{ kgf/cm}^2$

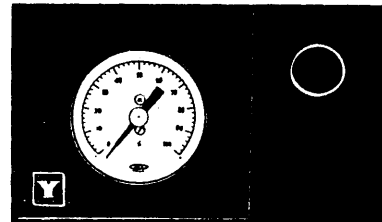
**Air consumption:** 1Nl/min.

**Piping connections:** Rc $\frac{1}{4}$  or  $\frac{1}{4}$  NPT internal thread

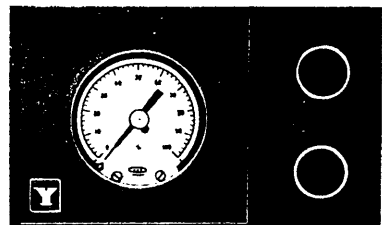
**Color finish:** Dark beige (Munsell 10YR 4.7/0.5)

**Case material:** Aluminum die-cast

**Weight:** Approx. 4 kg



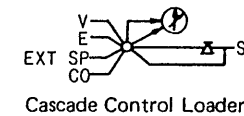
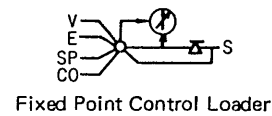
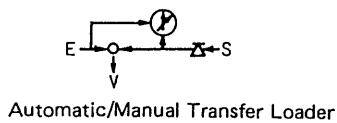
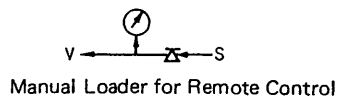
Manual Loader for Remote Control



Cascade Control Loader

4

**Circuit Diagram**



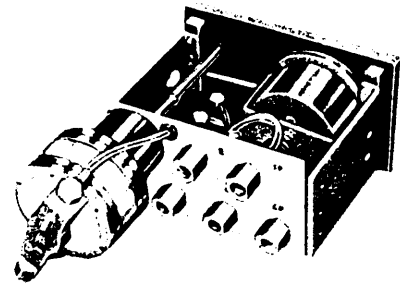
- : Pressure gage
- : Pressure regulator
- : Transfer switch
- S : Supply pressure
- V : Output pressure
- E : Process variable
- SP : Setpoint pressure
- EXT. SP : External setpoint pressure
- CO : Cut-off signal

**Model Number Table**

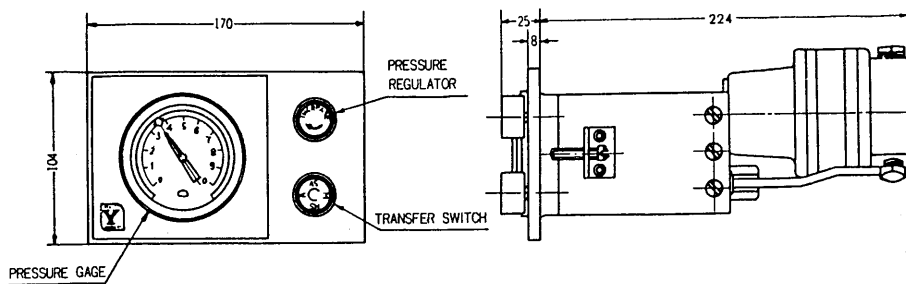
Basic Model No.	Type	Pressure Regu.	Mounting	Description
NZ 1				Pneumatic Manual Loader
	-1			Manual Loader for Remote Control
	-2			Automatic/Manual Transfer Loader
	-3			Fixed Point Control Loader
	-4			Cascade Control Loader
		1		Precision Pressure Regulator
			1	Horizontal Mounting
			2	Vertical Mounting

**Piping Connection**

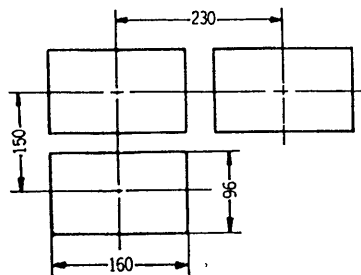
Symbol of connector plate	Connections		
	Manual Loader for Remote Control	Automatic/Manual Control Loader	Fixed Point & Cascade Control Loader
S	Supply air	Supply air	Supply air
V	Control-end pressure	Control-end pressure	V of controller
E	-	Process variable	E of controller
SP	-	-	SP of controller
CO	-	-	CO of controller



**Dimensions**



PANEL CUTOUT AND MINIMUM CENTER TO CENTER DIMENSIONS



**Ordering Information**

When ordering, please specify:

- 1) Model No.
- 2) Scale Range

Remarks: Please refer to us for the case of upward mounting (with pressure gage facing upward), because of the difference in calibration of the gage.

\*Reference instruction manual . . . OM2-3380-0100

\*Specifications are subject to change without notice.