

Yamatake-Honeywell**SPECIFICATION****Specifications****Measuring range:**

NKP 11; 0~100 to 0~700 kg/cm²
 NKP 12; 0~25 to 0~250 kg/cm²
 NKP 13; 0~7 to 0~70 kg/cm²
 NKP 14; 0~3.5 to 0~35 kg/cm²

Process connection:

PT 1/2 (ISO R7 1/2") or NPT 1/2,
 PT 1/4 (ISO R7 1/4") or NPT 1/4 tap thread or
 Welding nipple connection

Air connection: PT 1/4 (ISO R7 1/4") or NPT 1/4 tap thread**Supply air pressure:** 1.4 ± 0.14 kg/cm²**Output:** 0.2~1.0 kg/cm²**Air consumption:** Within 4NI/min. (When output 100% balanced.)**Operating pressure:**

NKP 11; -1~+700 kg/cm² G
 NKP 12; -1~+300 kg/cm² G
 NKP 13; -1~+105 kg/cm² G
 NKP 14; -1~+52.5 kg/cm² G

Operating temperature:

At meter body (process fluid); -40~+120°C
 At transmitter (ambient); -30~+80°C

Relative humidity: 10~90% RH**Overload protection:**

NKP 11; Up to 750 kg/cm² G
 NKP 12; Up to 320 kg/cm² G
 NKP 13; Up to 140 kg/cm² G
 NKP 14; Up to 70 kg/cm² G

Accuracy: ±0.5% FS**Dead band:** Within 0.1% FS (Sensitivity is 0.05% FS)**Materials:**

Bourdon tube; SUS 316 st. st.
 Wet-part; SUS 316 st. st.
 Transmitter case; Aluminum die-cast

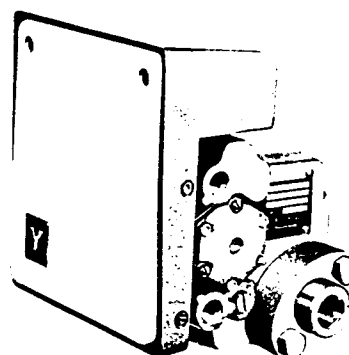
Finish: Acryl baking finish

(For corrosion-resistant and silver finish, refer to the optional specification.)

Color of finish: Cover; Light beige (Munsell 4Y 7.2/1.3)
 Case; Dark beige (Munsell 10YR 4.7/0.5)

Mounting: On vertical or horizontal 2 inch pipe.**Net weight:** Approx. 5.5 kg (Add 1.8 kg for air set.)**PNEUMATIC****PROCESS PRESSURE TRANSMITTER****BOURDON TUBE TYPE****(HIGH & MIDDLE PRESSURE RANGE)**

MODEL ; NKP 11/12/13/14



NKP 11

Options (Accessories)

Following accessories are optionally available.
 Item (1), (2) are the standard options.

(1) Suppression and elevation:

	Spring A		Spring B	Span plus elevation (kg/cm ² G)
	Suppression (kg/cm ² G)	Elevation (kg/cm ² G)	High elevation (kg/cm ² G)	
NKP 11	Up to -1	Up to 600	-	Up to 700
NKP 12	Up to -1	Up to 225	225~275	Up to 300
NKP 13	Up to -1	Up to 60	60~98	Up to 105
NKP 14	Up to -1	Up to 30	30~49	Up to 52.5

(2) Air set (Filter and pressure regulator)

Item (3) ~ (5) are the semi-standard options.

(3) Oil free (Y 67)

Degreased.

(4) Steam jacket (Y 113)

Operating pressure; 50 kg/cm² G (Max.)

Operating temperature; 200°C (Max.)

(Body temperature must not exceed 120°C.)

Connection; PT 1/4 (ISO R7 1/4") or NPT 1/4 tap thread
 Material; Carbon steel (SF 45)

(5) Corrosion-resistant and silver finish (Y138A~D)

Corrosion-resistant (Acryl baking) finish (Y138A);
 Resistance for corrosive gases.

Corrosion-proof (Epoxy baking) finish (Y138B);
 Resistance for corrosive liquids.

Silver-normal (Acryl baking) finish (Y138C);

Protection for temperature rise of device caused by direct sun light, radiation heat, etc.

Silver-corrosion-resistant (Acryl baking) finish (Y138D)

Protection for above-mentioned temperature rise and resistance for corrosive gases.

(Note: Silver finish is not applicable for alkaline gases.)

Yamatake-Honeywell Co. Ltd.**Process Control Division**

Sales Headquarters : Nagai International Bldg., 12-19, Shibuya 2 chome, Shibuya-ku, Tokyo, 150 Japan
 Tel : (03) 409-7171 Telex : J22902 Cable : YAMATAKE CO

Model Number Table

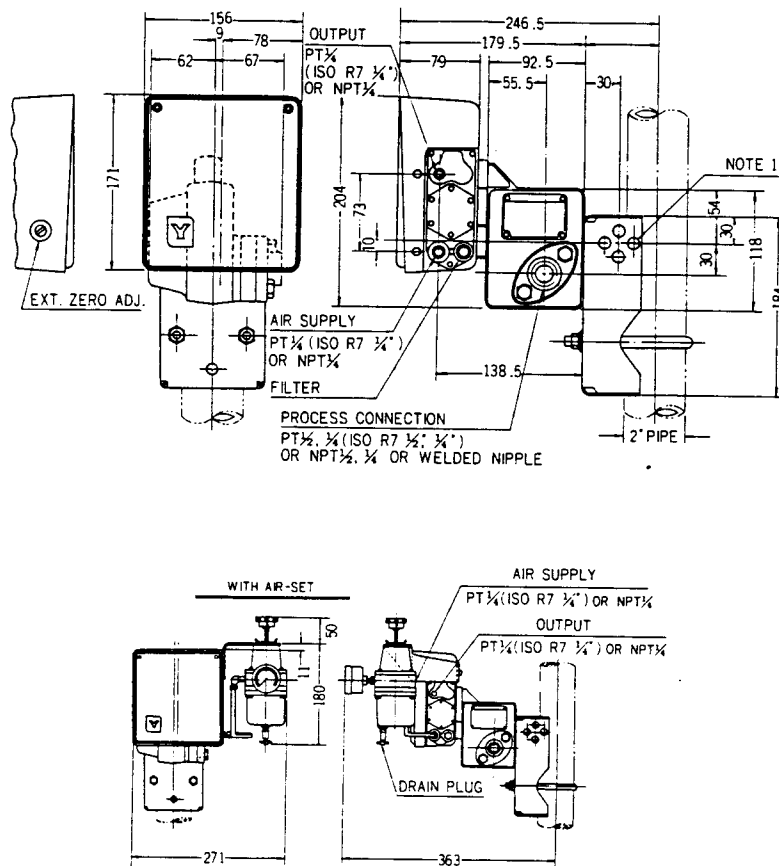
Ex.: NKP 11-22-5, 7

Basic Model No.		Wet-part	Element	Option	Description	
Type	Range	Mat'l	Mat'l			
NKP	1				Pneumatic, Process Pressure	
					Gage Pressure	
	1				0~100 to 0~700 kg/cm ²	
	2				0~25 to 0~250 kg/cm ²	
	3				0~7 to 0~70 kg/cm ²	
	4				0~3.5 to 0~35 kg/cm ²	
			-2			Stainless Steel (SUS 316)
				2		Stainless Steel (SUS 316)
					-5	Elevation or High Elevation
					-6	Suppression
				-7	Air-Set	

Note: When specifying semi-standard options (Y □), write in "Y" as follows and put an additional remarks for "Y" numbers.

Example: NKP 11Y-22-5, 7 and add "Y" number in writing.

Dimensions



- Notes:
1. Universal mounting bracket enables the meter to be mounted to either vertical or horizontal 2 inch pipe.
 2. Vertically mount the transmitter. Do not exceed 5 degrees from vertical in either direction.

※ Specifications are subject to change without notice.

Ordering Information

When ordering, please specify:

- 1) Model No.
- 2) Pressure range
- 3) Options

※ Reference instruction manual ... OM2-514-110

※ Reference instruction manual ... Steam jacket (SS2-519-050)