

Vumatik 8000 Separate-Mount Control Unit Model NUEB

The Separate-Mount Control Unit is normally used together with the control station.

Specifications

Input (PV and SP): 0.2 to 1.0 kgf/cm² or 3 to 15 psi

Output: 0.2 to 1.0 kgf/cm² or 3 to 15 psi

Cut-off signal: 0 or 1.4 kgf/cm²

Type of control: PI, PI (batch control) and PID

Control parameters:

Proportional band (P); 5 to 500%

Integral (I); 0.01 to 50 min.

Derivative (D); 0.01 to 50 min

Output air capacity: 20 Nℓ/min

Air supply: 1.4 ± 0.14 kgf/cm²

Minimum load: ID4 mm × 3 m + 20 cm³

Air consumption: 11 Nℓ/min (When 50% output, balanced state)

Operating conditions:

Temperature; -15 to +80°C

Humidity; 10 to 90% RH

Installation: 2" pipe or wall mount

Mounting angle: Horizontal

Finish: Acryl baking finish

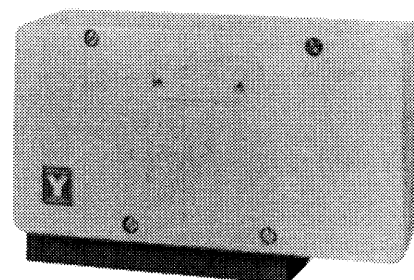
Color finish:

Cover; Light beige (Munsell N7)

Case; Dark beige (Munsell 10YR4.7/0.5)

Connection: Rc $\frac{1}{4}$ or $\frac{1}{4}$ NPT internal thread

Net weight: 6.5 kg



NUEB

Options (Accessories)

Following options are available.

(1) **Air-set**

with filter and pressure regulator.

Item (2) is the semi-standard option.

(2) **Corrosion-resistant and silver finish (Y138 A, B, C, D)**

Corrosion-resistant (Acryl baking) finish (Y138A);

Resistance for corrosive gases.

Corrosion-proof (Epoxy baking) finish (Y138B);

Resistance for corrosive liquids.

Silver-normal (Acryl baking) finish (Y138C);

Protection for temperature rise of device caused by direct sun light, radiation heat, etc.

Silver-corrosion-resistant (Acryl baking) finish (Y138D)

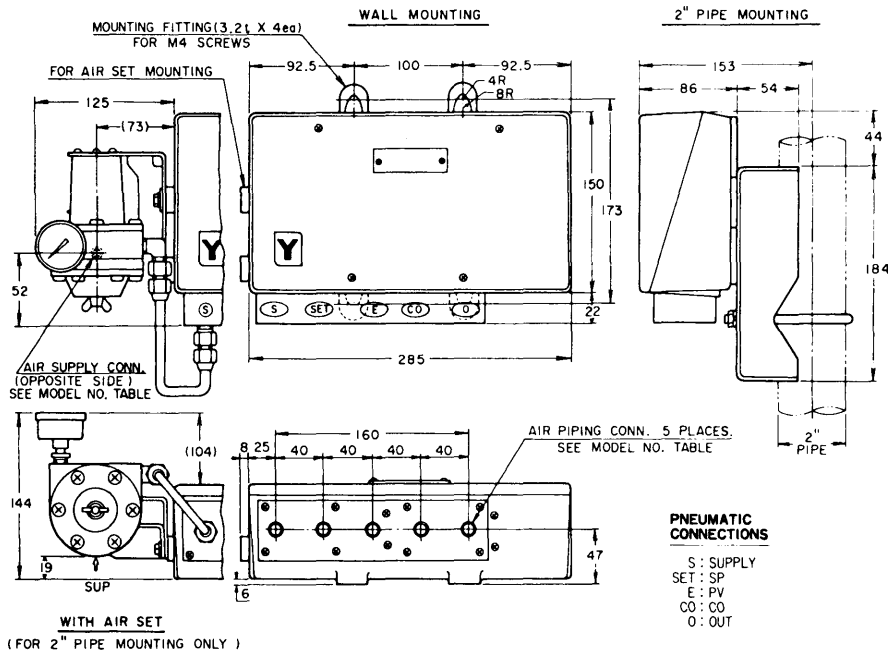
Protection for above-mentioned temperature rise and resistance for corrosive gases.

(Note: Silver finish is not applicable for alkaline gases.)

Model Number Table

Basic Model No.	Selection	Option	Description
NUEB 92			Separate-mount Control Unit (PI)
NUEB 93			" (PID)
NUEB 95			" (PI Batch Control)
	-W		Weatherproof Type
	A		Air Piping Connection: Rc $\frac{1}{4}$ (PT $\frac{1}{4}$) Internal Thread
	B		" : $\frac{1}{4}$ NPT Internal Thread
		1	Pneumatic Signal Range: 0.2 – 1.0 kgf/cm ²
		2	" : 3 – 15 psi
		S	Wall mounting
		T	2" pipe mounting
		-X	No Option
		-A	With Air-set

Dimensions



Specifications are subject to change without notice.



Yamatake Corporation

Totate International Building
 2-12-19 Shibuya
 Shibuya-ku Tokyo 150-8316
 Tel : 81-3-3486-2216
 Fax : 81-3-3486-2503

Yamatake-SIC Control Systems Co., Ltd.	: China	86-10-6326-9844/55
Shanghai Yamatake Jinshan Control Instruments Co., Ltd.	: China	86-21-5793-5334
Yamatake Korea Co., Ltd.	: Korea	82-2-785-0280-2
Yamatake (Thailand) Co., Ltd.	: Thailand	66-2-210-0900-7
Yamatake Philippines, Inc.	: Philippines	63-2-817-6452
PT. Yamatake Berca Indonesia	: Indonesia	62-21-230-5538/5539
Yamatake Controls Singapore Pte. Ltd.	: Singapore	65-778-5966
YCV Corporation	: U.S.A.	1-602-548-1800

Savemation

Saving through Automation

Yamatake Industrial Systems Co.,Ltd.

<http://www.yamatake.co.jp/>

9906-Y/Y

This has been printed on recycled paper.