

Pneumatic Manual Loader Model NZ1

Pneumatic Manual Loaders are used for external set point adjustment on control station or for manually regulating a final element. Following models are available.

Specifications

Models:

1. Manual Loader for Remote Control
2. Automatic/Manual Transfer Loader
3. Fixed Point Control Loader
4. Cascade Control Loader

Component:

- Pressure gage ; $\phi 60$, single or dual pointers
- Accuracy . . . $\pm 1\%$ FS
- Scale range . . . 0 ~ 100% even or 0 ~ 10 $\sqrt{\text{sq. rt}}$
- Pressure regulator ; Precision type
- Transfer switch ;
 - 3-way 2-position (For AUT/MAN. Transfer Loader)
 - 8-way 4-position (For Fixed Point Control Loader)
 - 9-way 4-position (For Cascade Control Loader)

Supply air: 1.4 ± 0.1 kg/cm²

Output: 0.2 ~ 1.0 kg/cm²

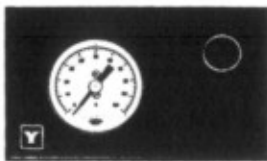
Air consumption: 1NI/min.

Piping connections: Rc $\frac{1}{4}$ or $\frac{1}{8}$ NPT internal thread

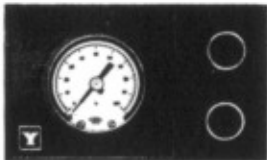
Color finish: Dark beige (Munsell 10YR 4.7/0.5)

Case material: Aluminum die-cast

Weight: Approx. 4 kg

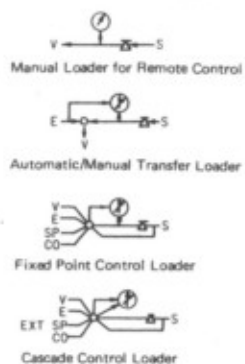


Manual Loader for Remote Control



Cascade Control Loader

Circuit Diagram



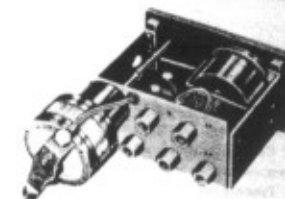
- ⊙ : Pressure gage
- ⚙ : Pressure regulator
- : Transfer switch
- S : Supply pressure
- V : Output pressure
- E : Process variable
- SP : Setpoint pressure
- EXT. SP : External setpoint pressure
- CO : Cut-off signal

Model Number Table

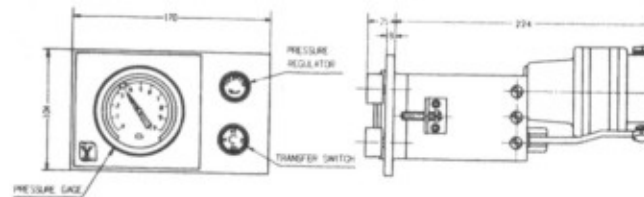
Basic Model No.	Type	Pressure Regu.	Mounting	Description
NZ 1				Pneumatic Manual Loader
	-1			Manual Loader for Remote Control
	-2			Automatic/Manual Transfer Loader
	-3			Fixed Point Control Loader
	-4			Cascade Control Loader
	1			Precision Pressure Regulator
			1	Horizontal Mounting
			2	Vertical Mounting

Piping Connection

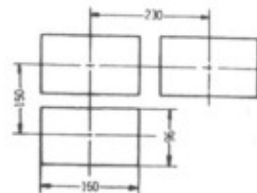
Symbol of connector plate	Connections		
	Manual Loader for Remote Control	Automatic/Manual Control Loader	Fixed Point & Cascade Control Loader
S	Supply air	Supply air	Supply air
V	Control-end pressure	Control-end pressure	V of controller
E	-	Process variable	E of controller
SP	-	-	SP of controller
CO	-	-	CO of controller



Dimensions



PANEL OUTPUT AND MINIMUM CENTER TO CENTER DIMENSIONS



Ordering Information

When ordering, please specify:

- 1) Model No.
- 2) Scale Range

Remarks: Please refer to us for the case of upward mounting (with pressure gage facing upward), because of the difference in calibration of the gage.

*Reference instruction manual . . . OM2-3380-0100

*Specifications are subject to change without notice.