

VumatiK 8000

Vertical Scale (Fixed Scale) Indicator Control Station

Manual Set-Point (Local) Model NULB 5

The Vertical Scale Indicator Control Station having no built-in controller is normally used together with a separate-mount type controller unit (Model NUEB or NUMA).

The indicating section, setting section and the manual control section are identical to these of the standard Vertical Scale Indicator Controller.

Specifications

Indicating section

Input: 0.2 to 1.0 kgf/cm² or 3 to 15 psi

Indication: Accuracy; $\pm 0.5\%$ FS
Repeatability; Within 0.2% FS
Dead band; Within 0.1% FS

Scale length: 85mm

Set-point section

Set-point setting: Manual (By set-point transmitter.)

Accuracy; $\pm 0.5\%$ FS
Repeatability; Within 0.2% FS

Manual loading unit

Valve meter: Scale; 0 to 100% (20 even div.)
Accuracy; $\pm 3.0\%$ FS
Repeatability; Within 0.5% FS

Auto-Man. transfer: Balanceless-Bumpless

Output air capacity: 20 Nl/min

Air supply: 1.4 \pm 0.14 kgf/cm²

Minimum load: ID4 mm x 3 m + 20 cm³

Air consumption: 12 Nl/min (When 50% output, balanced state)

Operating conditions: Temperature; 0 to 50°C
Humidity; 10 to 90% RH

Mounting: Indoor panel flush mounting.

Mounting angle: Up to 75° case rear down from horizontal.

Color finish:

Bezel; Dark beige (Munsell 10YR 4.7/0.5)

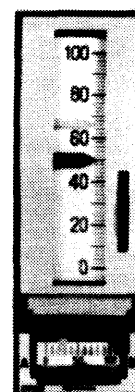
Upper mask; Light gray (Munsell N7)

Lower mask; Aluminic silver

Case; Dark beige (Munsell 10YR 4.7/0.5)

Connections: Air; Rc $\frac{1}{4}$ (PT $\frac{1}{4}$) or $\frac{1}{4}$ NPT internal thread
Electric; M 3.5 mm screws

Net weight: Standard case; 5.5 kg
Short case; 4.5 kg



NULB 5

Options

Following options are available.

Item (1), (2) are the standard options.

(1) Lamp (1-set)

Rating: 24 V, 15 mA/lamp

Number of lamp: 2-lamp (Can be divided into two sections.)

(2) Monitor switch (With a lamp set)

Number of alarm: PV; 1- or 2-point

Deviation; 1-point

Setting span: PV; 0 to 100% FS

Deviation; 100 to 0 to 100% FS

Remark; Minimum 10% FS clearance is required between the lowest value of Hi limit and the highest value of Lo limit.

Differential gap: Within 0.5% FS

Repeatability: Within 0.5% FS

Output contact rating: AC 250 V, 4 A

Item (3), (4) are the semi-standard options.

(3) Front mask semi-standard color (Y 100A, B, D, E)

(4) Make-up bottom unit (Y 120A, B)

With output gage (Y 120A),

Blind (Y 120B)

Model Number Table

Notes:

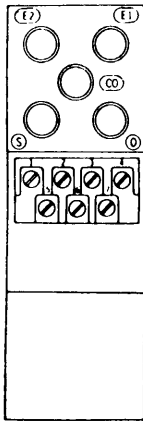
1) When ordering "Y" semi-standard options, please write as: NULB 50Y-A1-X (Y □).

2) Front mask semi-standard color

Part Y-No.	Bezel	Upper Mask	Lower Mask
Y100A	Dark beige (10YR 4.7/0.5)		
Y100B	Mist green (2.5 G 5/1.5)	Light gray (N 7)	Alumic silver
Y100D	Black (N 1.2)	Light gray (N 7)	Alumic silver
Y100E	Jade green (7.5 BG 4/1.5)	Light gray (N 7)	Alumic silver

Basic Model No.	Selection	Option	Description
NULB 50			Vertical Scale Indicator Control Station (Local Type, Standard Case)
NULB 59			Vertical Scale Indicator Control Station (Local Type, Short Case)
	-A		Air Piping Connection: Rc $\frac{1}{4}$ (PT $\frac{1}{4}$) Internal Thread
	-B		" : $\frac{1}{8}$ NPT Internal Thread
		1	Pneumatic Signal Range: 0.2 - 1.0 kgf/cm ²
		2	" : 3 - 15 psi
	-X		No Option
	-1		With a Lamp Set
	-6		With A Type Monitor Switch (Hi and Low on No. 1 PV, with a Lamp Set)
	-7		Deviation Monitor Switch (With a Lamp Set)
	-8		With A Type Monitor Switch (Hi on No. 1 PV, with a Lamp Set)
	-9		With A Type Monitor Switch (Low on No. 1 PV, with a Lamp Set)

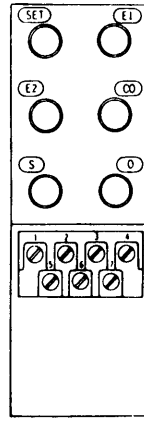
Customer Connections



Standard Case

PNEUMATIC CONNECTIONS

- S : SUPPLY
- O : OUT
- E1 : PV
- E2 : Ex. SP
- CO : CO



Short Case

ELECTRIC CONNECTIONS

With 1-point Monitor and Lamp Set

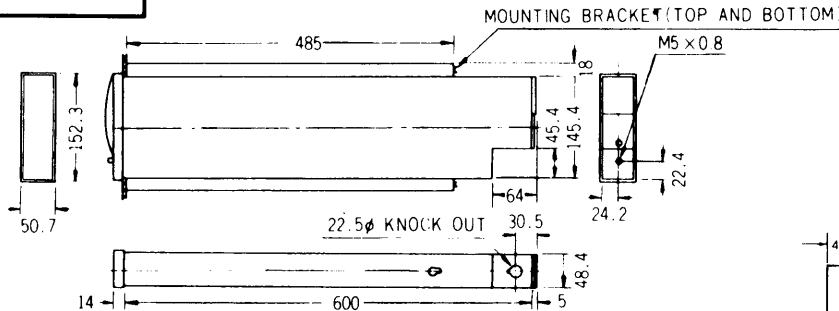
- 1 MONITOR OUT
- 2 MONITOR COMMON
- 3 MONITOR OUT
- 4 GROUND
- 5 RIGHT OF LAMP SET (-)
- 6 LEFT OF LAMP SET (-)
- 7 COMMON OF LAMP SET (+)

With 2-point Monitor or Dev. Monitor and Lamp Set

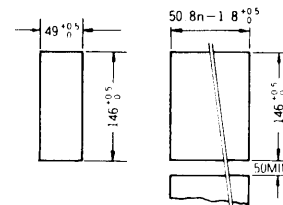
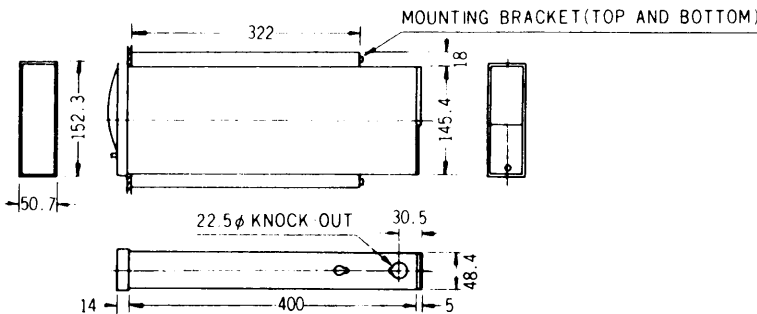
- 1 MONITOR OUT (HI)
- 2 MONITOR COMMON
- 3 MONITOR OUT (LOW)
- 4 GROUND
- 5 RIGHT OF LAMP SET (-)
- 6 LEFT OF LAMP SET (-)
- 7 COMMON OF LAMP SET (+)

Dimensions

Standard Case



Short Case



PANEL CUT-OUT
n: no. of unit

Specifications are subject to change without notice.



Yamatake Corporation

Totate International Building
2-12-19 Shibuya
Shibuya-ku Tokyo 150-8316
Tel : 81-3-3486-2216
Fax : 81-3-3486-2503

Yamatake-SIC Control Systems Co., Ltd.
Shanghai Yamatake Jinshan Control Instruments Co., Ltd.
Yamatake (Thailand) Co., Ltd.
Yamatake Philippines, Inc.
PT. Yamatake Berca Indonesia
Yamatake Controls Singapore Pte. Ltd.
YCV Corporation

: China 86-10-6326-9844/55
: China 86-21-5793-5334
: Thailand 66-2-210-0900-7
: Philippines 63-2-817-6452
: Indonesia 62-21-230-5537/5539
: Singapore 65-778-5966
: U.S.A. 1-602-548-1800

Savemation

Saving through Automation

Yamatake Industrial Systems Co., Ltd.

<http://www.yamatake.co.jp/>

This has been printed on recycled paper.