

Model GPX

Field-type Electro-Pneumatic (I/P) Converter

OVERVIEW

GPX 100 I/P Converter is a field-mounted interface for installation between electric-type controllers and pneumatic control valves. GPX 100 offers high-precision electric current to air pressure converter. The converter is small in size, lightweight and stable over a wide range of outputs.



FEATURES

- Whether small- or large-capacity changes are required, the GPX 100 offers fast response and stable output.
- Converter offers excellent, high precision in any environment.
- Zero-span adjusted easily.
- Eases installation for small in size and light of weight. GPX 100 is installed without a feed pipe for a pressure regulator with filter (model KZ03) is installed directly on the body.
- Manual operation of the regulator via auto/manual switch, which is a standard function.
- No power wire required—the 2-wire GPX 100 requires only a signal line to operate.

SPECIFICATIONS

Input signals

4 to 20 mA

Input resistance

300 Ω max.

Output signal

20 to 100 kPa, 19.6 to 98.1 kPa {0.2 to 1.0 kgf/cm²}

Air supply pressure

140 kPa ± 10%

Air consumption

Max. 3 L/min [N] (With output 50% balanced)

Maximum air supply capacity

110 L/min [N]

Additional capacity

Refer to Fig.1

(Minimum capacity : I.D. 4 mm copper tube × 0.5 m + 20 cm³)

Air connection

Rc1/4 internal thread

Electrical conduit connection

G1/2 internal thread

Ambient temperature range

-20 to 60 °C

Ambient humidity range

10 to 90% RH

Performance

Accuracy

± 0.5% F.S.

Mounting

2 inch pipe (Horizontal or vertical)

Finish

color

Acryl baked finish

Metallic green

Construction

Water proof

JIS C0920, NEMA TYPE4X equivalent, IP54 equivalent

JIS Flameproof

JIS C0930 Ex d IIC T6

Applicable Air specification

Particles

Maximum diameter 3 μm

Oil mist

Not acceptable

Dew point

10 °C below than ambient temperature

MODEL SELECTION

10) FIELD - TYPE I / P Converter (GPX100)

Model No. Basic Price Selections Options and Selections Options
 GPX100 150 — I II III,IV V VI VII VII,IX X XI - XII

Selections			Code
I	Input signal	4 to 20mA	1
II	Output signal	20 to 100 kPa	1
		0.2 to 1.0 bar	2
		3 to 15 psi	3
		0.2 to 1.0 kgf / cm2	4
		0.02 to 0.10 Mpa	5
		19.6 to 98.1 kPa	8
III IV	Airpiping, conduit connection	Air piping Rc 1 / 4, Conduit G1 / 2	RG
		Airpiping 1 / 4 NPT, Conduit 1 / 2 NPT (Not available wit hJIS explosion proof type)	NN
		Airpiping 1 / 4 NPT (with Rc1 / 4 - 1 / 4 NPT adapter) Note 1	AA
		Conduit 1 / 2 NPT (with G1 / 2 - 1 / 2 NPT adapter) Note 1	
V	Finish	Standard finish (Acryl baked)	S
		Corrosion proof finish (Epoxy baked Y138B)	B
		Silver finish (Acryl baked Y138D)	D
VI	Mounting	2 - inch pipe (With mounting kits)	S
VII	Output operation	Direct (Output pressure increases by input signal increases)	D

Options and Selections

VIII	Housing	Water proof	X
		JIS explosion proof (With pressure tight packing cable adapter)	E
IX	Pressure regulator with filter	None	X
		KZ03 (Connected to GPX)	1
X	Air supply	Same as output signal	G
XI	Output	None	X
		With output pressure gauge (Same unit as output signal)	G

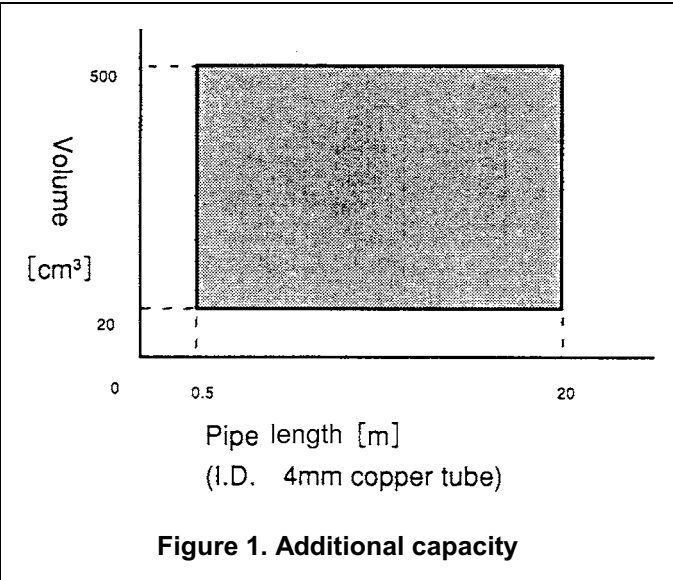
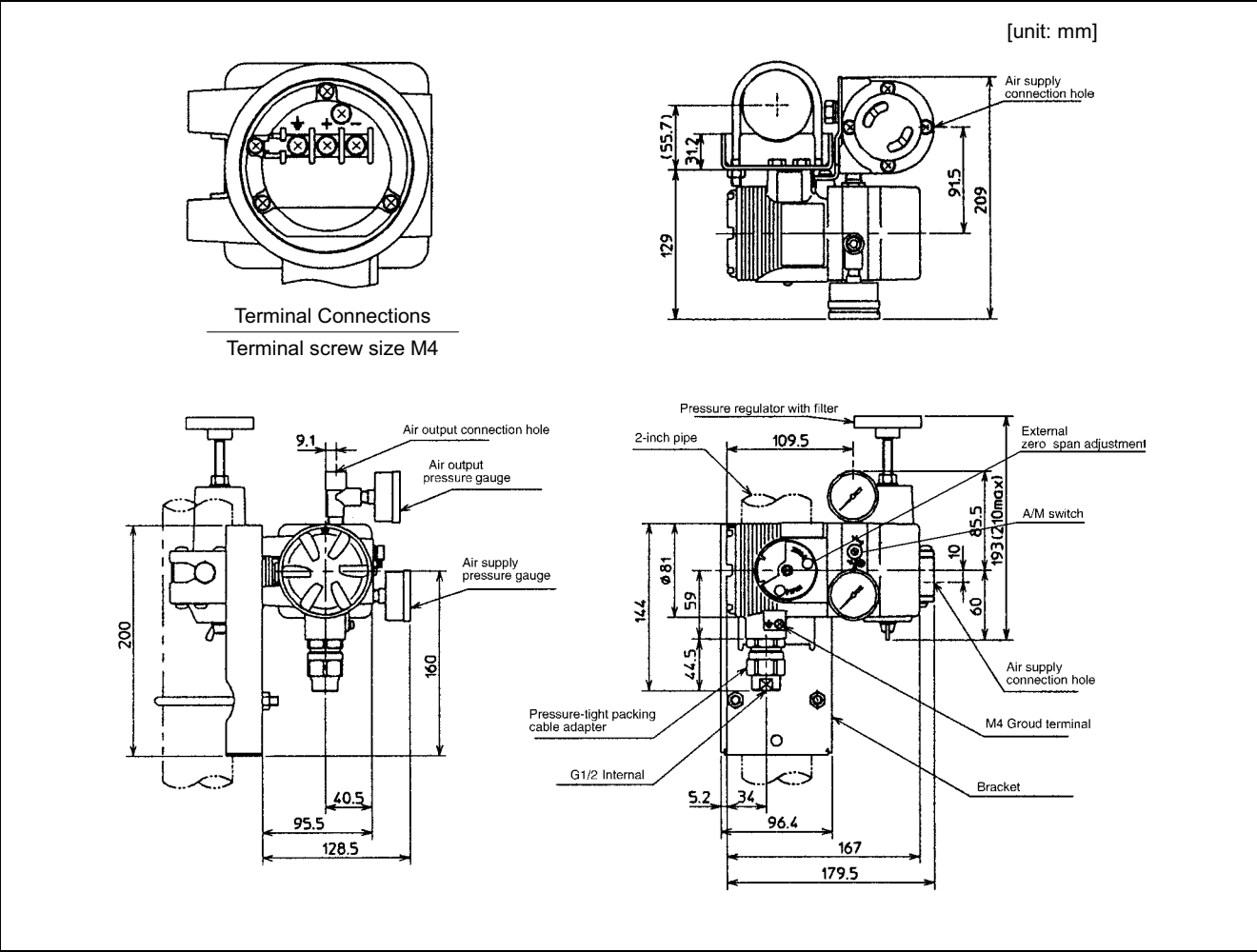
Options

XII	None	X
	Explosion proof type universal elbow (SUS304, G1 / 2)	E

Note 1 : 1 / 4 NPT is connected by putting the change adapter of 1 / 4 NPT on Rc 1 / 4 of the case.

2 : 1 / 2 NPT is connected by putting the change adapter of 1 / 2 NPT on G1 / 2 of the case.

DIMENSIONS



Yamatake Corporation

Totate International Building
2-12-19 Shibuya
Shibuya-ku, Tokyo 150-8316
Japan

Tel : 81-3-3486-2216
Fax : 81-3-3486-2503



Certificate No. Q17862



Certificate No. E8318
For Shonan Factory



Savemation

Saving through Automation