

Systempak

Single-I/P Converter

Model KUX112

Introduction

Single-I/P Converter (Model KUX112) is an extremely compact instrument which converts and electrical current signal into a pneumatic pressure signal. The KUX112 is of a 2-wire type.



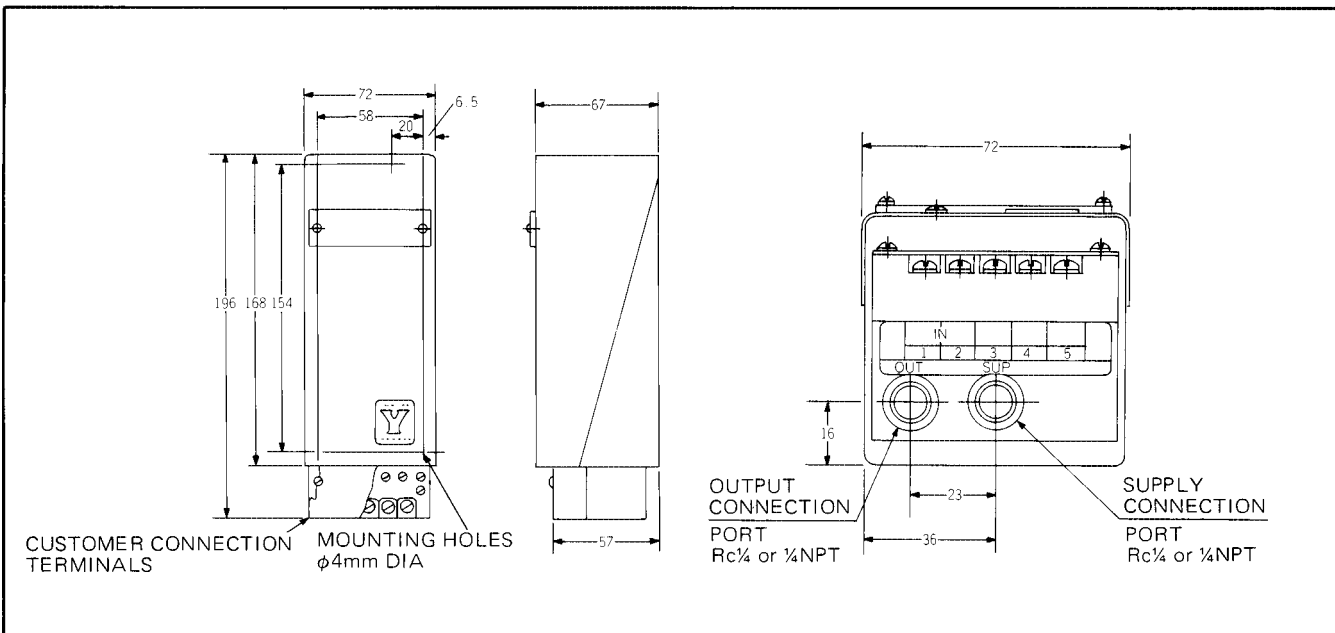
Standard Specifications

Item	Specifications
Input Signal	4~20mADC
Input Resistance	340 ohms MAX.
Output Signal	0.2~1.0kgf/cm ² {20~98kPa, 3~15psi, 0.2~1.0bar, 20~100kPa (Rated pressure: 2kgf/cm ² {200kPa})
Air Supply	1.4kgf/cm ² {140kPa} $\begin{matrix} +30\% \\ -10\% \end{matrix}$
Air Consumption	4Nℓ/minute MAX.
Max. Pneumatic Delivery	20Nℓ/minute
Max. Pneumatic Exhaust	20Nℓ/minute
Minimum Load Capacity	ID 4mm copper pipe×3m+20cm ³
Electrical	With binding screws (M3×6mm)
Air Connection	Rc $\frac{1}{4}$, $\frac{1}{4}$ NPT, internal thread
Ambient Temperature	0 to 50°C
Ambient Humidity	10 to 90% RH
Accuracy	±0.25% FS
Hysteresis Error	0.15% FS
Dead Band	Within 0.05% FS
Temperature Characteristics	Zero shift: ±1% FS/25°C MAX. Span shift: ±1% FS/25°C MAX.
Structure	Indoor installation type
Mounting	Wall mount
Weights	Approx. 1.6kg

Model Number Table

Basic Model No.	Selections						Options	Description
	Power Supply	Input	Output	Connection	Mounting	Environment		
KUX112								Single-I/P Converter
	-X							None
		1						4~20mA DC
			1					0.2~1.0kgf/cm ² {20~98kPa}
			2					3~15psi
			3					0.2~1.0bar
			4					20~100kPa
				A				Rc¼
				B				¼ NPT, internal thread
					S			Wall mount, indoor installation
						X		Standard
						A		For tropical service (Upon special order)
						B		Corrosive atmosphere (Upon special order)
							-X	No options

Dimension Drawing



Specifications are subject to change without notice.

Yamatake Corporation

Totate International Building
2-12-19 Shibuya
Shibuya-ku Tokyo 150-8316
Tel : 81-3-3486-2216
Fax: 81-3-3486-2503

Yamatake-SIC Control Systems Co., Ltd.
Shanghai Yamatake Jinshan Control Instruments Co., Ltd.
Yamatake Korea Co., Ltd.
Yamatake (Thailand) Co., Ltd.
Yamatake Philippines, Inc.
PT. Yamatake Berca Indonesia
Yamatake Controls Singapore Pte. Ltd.
YCV Corporation

: China 86-10-6510-2505
: China 86-21-6428-8661
: Korea 82-2-785-0280-2
: Thailand 66-2-210-0900-7
: Philippines 63-2-817-6452
: Indonesia 62-21-230-5538
: Singapore 65-778-5966
: U.S.A. 1-602-548-1800

YAMATAKE

Savemation

Saving through Automation

Yamatake Industrial Systems Co.,Ltd.

<http://www.yamatake.co.jp/>

This has been printed on recycled paper.

9908-Y/Y