

SystempaK

Single-P/I Converter

Model KUX122/127

Introduction

Single-P/I Converter (Model KUX 122) employs a semiconductor sensor and converts a pneumatic signal into an electrical signal with high accuracy.



Standard Specifications

Item	Specifications
Input Signal	0.2 to 1.0 kgf/cm ² (20–98 kPa), 3 to 15 psi, or 0.2 to 1.0 bar, 20 to 100 kPa (Pressure rating 2 kgf/cm ² (200 kPa))
Output Signal	4 to 20 mA DC (Current limit approx. 30 mA), or 1 to 5 VDC
Power Source	24 VDC $\begin{matrix} +15\% \\ -10\% \end{matrix}$
Power Consumption	0.48 W (MAX.)/1 module
External Load	480 ohms or less with 24 VDC supply. [Note] The maximum allowable external load resistance is calculated as follows: $R = (V - 14.4) / 0.02$ where, R: Load resistance (ohm) V: Supply voltage (volt)
Air Connection	Rc1/4, 1/4NPT internal thread
Ambient Temperature	0 to 50°C
Ambient Humidity	10 to 90% RH
Accuracy	±0.25% FS
Hysteresis	0.10% FS or less
Temperature Characteristics	Zero shift: 0.6% FS/25°C (MAX.) Span shift: 0.6% FS/25°C (MAX.)
Zero Drift	0.5% FS/6 months (MAX.)
Mounting	Wall-mount
Weight	Approx. 1.2 kg
Finish	Case: Zn plating (chromate processed) Cover: Dark beige (Munsell 10YR4.7/0.5)
Housing	Indoor installation type

Model Number Table

1) Single-P/I Converter

Basic Model No.	Selections						Options	Description
	Power Source	Input	Output	Air Piping Connection	Module	Environment		
KUX122	-1							Single-P/I converter
								DC24V
		1						0.2 to 1.0kgf/cm ² 20~98kPa
		2						3 to 15psi
		3						0.2 to 1.0bar
		4						20 to 100kPa
		5						0 to 1.0kgf/cm ² 0~98kPa (Specific order)
		6						3 to 27psi (Specific order)
			1					4 to 20mA DC
			2					1 to 5V DC (Specific order)
			3					20 to 4mA DC (Specific order)
				A				Rc1/4
				B				1/4 NPT internal thread
					1			1 point
					2			2 points
						X		Standard
						A		For tropical service (Specific order)
						B		Corrosive atmosphere resistant (Specific order)
							-X	No options

2) Single-P/I Converter Module

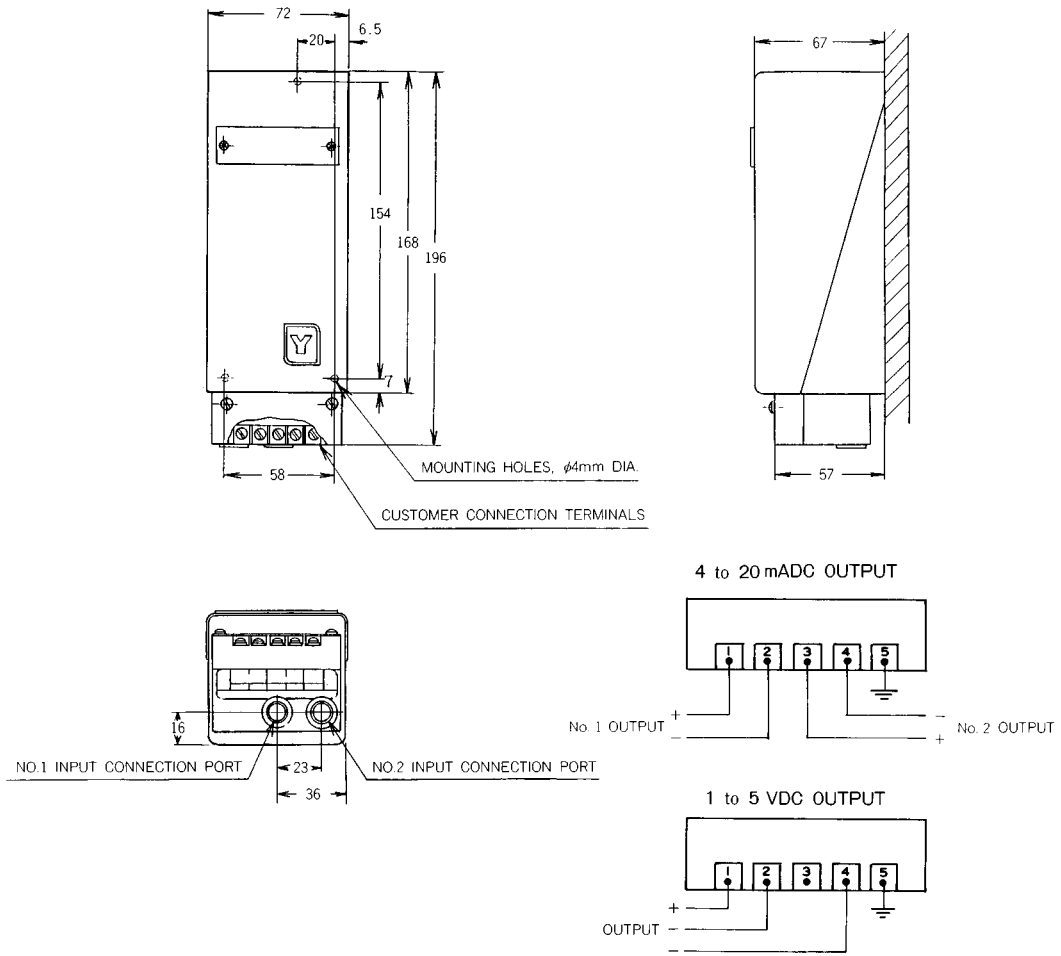
Basic Model No.	Selections				Options	Description	
	Power Source	Input	Output	Environment			
KUX127	-1					Single-P/I Converter Module	
							DC24V
		1					0.2 to 1.0kgf/cm ² 20~98kPa
		2					3 to 15psi
		3					0.2 to 1.0bar
		4					20 to 100kPa
		5					0 to 1.0kgf/cm ² 0~98kPa (Specific order)
		6					3 to 27psi (Specific order)
				1			4 to 20mA DC
				3			20 to 4mA DC (Specific order)
					X		Standard
					A		For tropical service (Specific order)
					B		Corrosive atmosphere resistant (Specific order)
						-X	No options

Note) For the 1 to 5 VDC output, the 4 to 20 mA DC output is converted into 1 to 5 VDC by converter side.

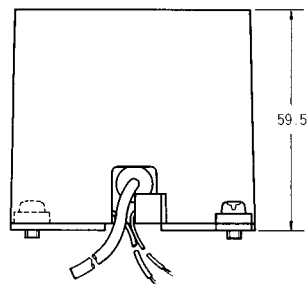
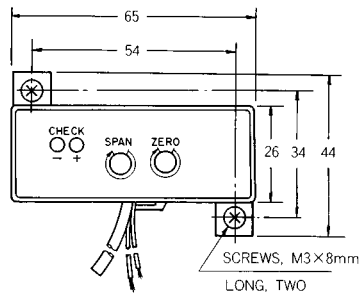
Dimensions and Connections

1) Single-P/I Converter (KUX122)

(Unit: mm)



2) Single-P/I Converter Module (KUX127)



Specifications are subject to change without notice.

YAMATAKE

Yamatake Corporation

Totate International Building
2-12-19 Shibuya
Shibuya-ku Tokyo 150-8316
Tel : 81-3-3486-2270
Fax: 81-3-3486-2593

Yamatake-SIC Control Systems Co., Ltd.	: China	86-10-6326-9844/55
Shanghai Yamatake Jinshan Control Instruments Co., Ltd.	: China	86-21-5793-5334
Yamatake Korea Co., Ltd.	: Korea	82-2-785-0280-2
Yamatake (Thailand) Co., Ltd.	: Thailand	66-2-210-0900~7
Yamatake Philippines, Inc.	: Philippines	63-2-817-6452
PT. Yamatake Berca Indonesia	: Indonesia	62-21-230-5538/5539
Yamatake Controls Singapore Pte. Ltd.	: Singapore	65-778-5966
YCV Corporation	: U.S.A.	1-602-548-1800

Savemation

Saving through Automation

Yamatake Industrial Systems Co.,Ltd.

<http://www.yamatake.co.jp/>

9907-Y/Y

This has been printed on recycled paper.