



SPECIFICATION SHEET

No. SS-31-101

Specifications

Input: T/C input) 2.5~100mV DC span
mV input)

Air connection: PT 1/4 female

Supply pressure: 1.4 ± 0.1 kg/cm²

Output pressure: 0.2~1.0 kg/cm²

Air consumption:

1 NI/min. (At 100% output and balanced state)

Working temperature range: 0~50°C

Working humidity range: 10~90% R.H.

Construction: Indoor mounting.

Suppression: -10~+35 mV D.C.

Accuracy: $\pm 0.5\%$ F.S. (over 10 mV span)

Dead band: Within 0.05%

Pressure source: AC 100/113/120V $\pm 10\%$, 50 or 60Hz ± 2 Hz

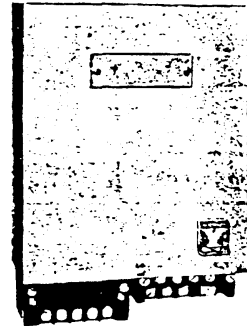
Power consumption: AC 4 VA

Mounting: Wall or rack mounting.

Net weight: Approx. 3.2 kg

MILLIVOLT TO PRESSURE (MV/P) CONVERTER

MODEL NOX 100



Ordering Information

When ordering, please specify:

1. Model No.

2. Measuring range

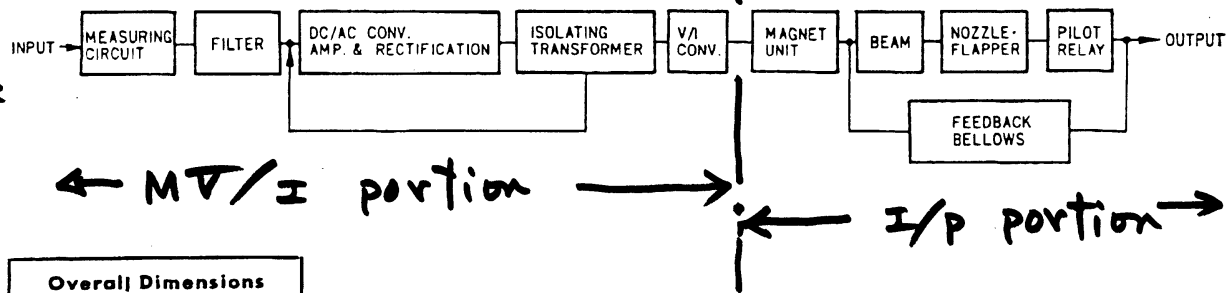
3. Type of thermocouple

Model Number System

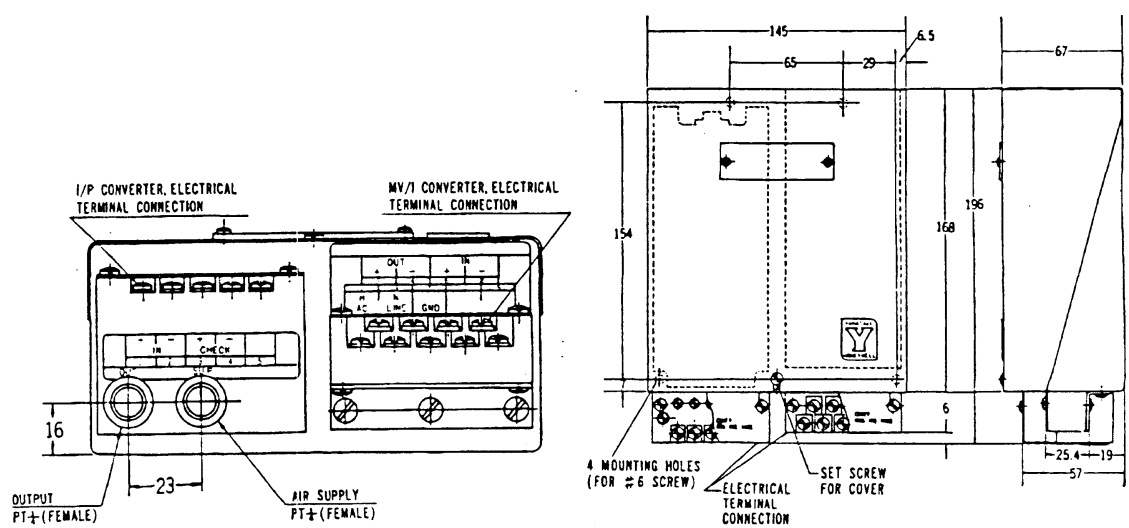
Key No.	Description
NOX 100	EMF to Pressure (MV/P) Converter

Block Diagram

T.C
Type K



Overall Dimensions



Customer Connection

