

# Vumatik 8000 Separate-Mount Control Unit Model NUEB

The Separate-Mount Control Unit is normally used together with the control station.

## Specifications

**Input (PV and SP):** 0.2 – 1.0 kgf/cm<sup>2</sup> or 3 – 15 psi

**Output:** 0.2 – 1.0 kgf/cm<sup>2</sup> or 3 – 15 psi

**Cut-off signal:** 0 or 1.4 kgf/cm<sup>2</sup>

**Type of control:** PI, PI (batch control) and PID

**Control parameters:**

Proportional band (P); 5 – 500%

Integral (I); 0.01 – 50 min.

Derivative (D); 0.01 – 50 min

**Output air capacity:** 20 Nℓ/min

**Air supply:** 1.4 ±0.14 kgf/cm<sup>2</sup>

**Minimum load:** ID4 mm x 3 m + 20 cm<sup>3</sup>

**Air consumption:** 11 Nℓ/min (When 50% output, balanced state)

**Operating conditions:**

Temperature; –15 to +80°C

Humidity; 10 – 90% RH

**Installation:** 2" pipe or wall mount

**Mounting angle:** Horizontal

**Finish:** Acryl baking finish

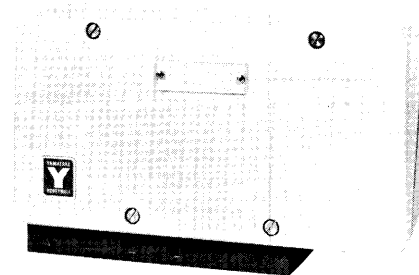
**Color finish:**

Cover; Light beige (Munsell N7)

Case; Dark beige (Munsell 10YR4.7/0.5)

**Connection:** Rc¼ or ¼ NPT internal thread

**Net weight:** 6.5 kg



**NUEB**

## Options (Accessories)

Following options are available.

**(1) Air-set**

with filter and pressure regulator.

Item (2) is the semi-standard option.

**(2) Corrosion-resistant and silver finish (Y138A, B, C, D)**

Corrosion-resistant (Acryl baking) finish (Y138A);

Resistance for corrosive gases.

Corrosion-proof (Epoxy baking) finish (Y138B);

Resistance for corrosive liquids.

Silver-normal (Acryl baking) finish (Y138C);

Protection for temperature rise of device caused by direct sun light, radiation heat, etc.

Silver-corrosion-resistant (Acryl baking) finish (Y138D)

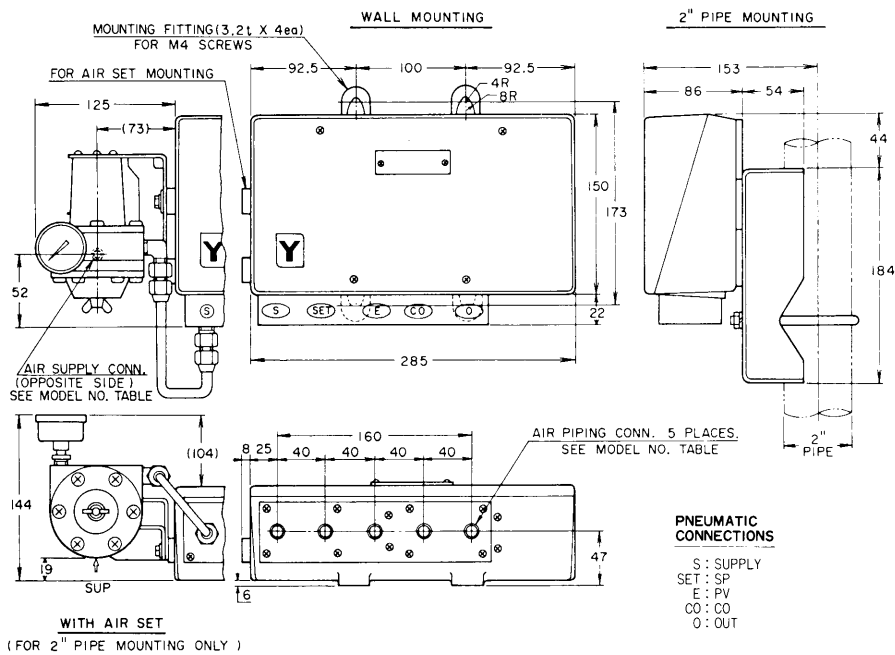
Protection for above-mentioned temperature rise and resistance for corrosive gases.

(Note: Silver finish is not applicable for alkaline gases.)

**Model Number Table**

Basic Model No.	Selection	Option	Description
NUEB 92			Separate-mount Control Unit (PI)
NUEB 93			" (PID)
NUEB 95			" (PI Batch Control)
	-W		Weatherproof Type
	A		Air Piping Connection: Rc $\frac{1}{4}$ (PT $\frac{1}{4}$ ) Internal Thread
	B		" : $\frac{1}{4}$ NPT Internal Thread
		1	Pneumatic Signal Range: 0.2 – 1.0 kgf/cm <sup>2</sup>
		2	" : 3 – 15 psi
		S	Wall mounting
		T	2" pipe mounting
		-X	No Option
		-A	With Air-set

**Dimensions**



**Yamatake Corporation**

Industrial Systems Division  
 Totate International Bldg.  
 2-12-19, Shibuya, Shibuya-ku  
 Tokyo, 150, Japan  
 Phone: 81-3-3486-2141  
 Cable: YAMATAKECO  
 Telex: J22902  
 Fax: 81-3-3486-2240

**Savemation**  
 Helping You Control Your World

Specifications are subject to change without notice.