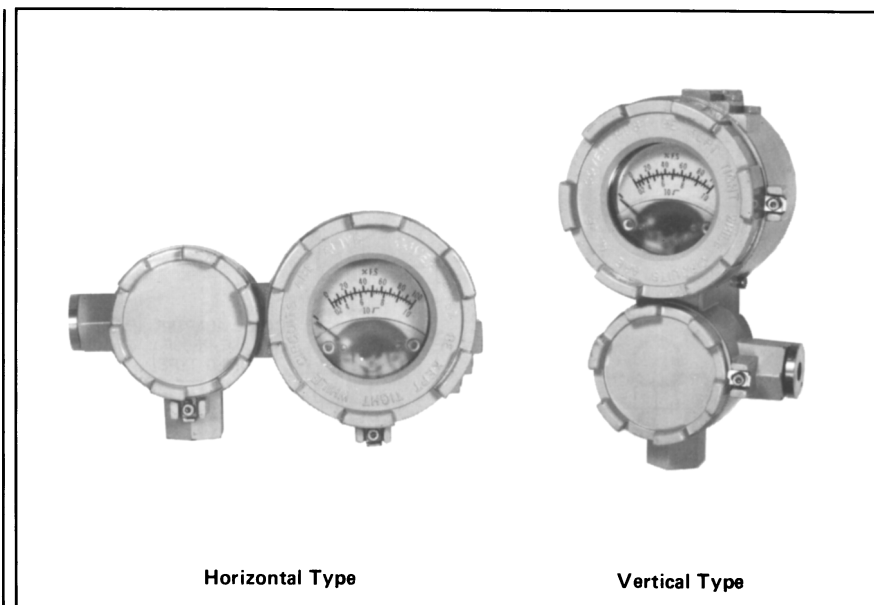


Field Type Current Signal Indicator Model NW35

Introduction

Model NW35 is a field type current signal indicator. It is available either in a horizontal type or a vertical type casing. Each meter has dual scales, one for 0 to 100 linear scale and the other for 0 to 10 square root scale.



Specifications

| | | |
|------------------------|--|---|
| Standard specification | Type of indication | 86° indication |
| | Scale length | 56 mm |
| | Scale range | 0 to 100% and 0 to 10√ dual scale |
| | Rating | 4 to 20 mA DC |
| | Internal resistance | 6Ω (With diode switch for protecting loop signal against the meter failure) |
| | Operating temperature | -10 to +60°C |
| | Accuracy | ±2.5% FS |
| | Housing | <ul style="list-style-type: none"> ● Intrinsic safety: JIS C0903 Class i3nG4 code approved. ● Splash-proof: JIS F8001 Class 3 code approved. Equivalent to NEMA Type 3, 4X, IECIP65 and JIS C0920 water-tight. |
| | Finish | Acryl baking finish Color: Light beige (Munsell 4Y 7.2/1.3) |
| | Electrical conduit connection | G½ female |
| Mounting | 2-inch vertical or horizontal, or wall mounting | |
| Case material | Aluminum alloy | |
| Semi-standard | ① For 10 to 50 mA DC (Y178A) | Internal resistance; 5Ω |
| | ② Corrosion-resistant and silver finish (Y 138A-D) | Y138A Corrosion-resistant (Acryl baking) finish; Resistance for corrosive gases. Y138B Corrosion-proof (Epoxy baking) finish; Resistance for corrosive liquids. Y138C Silver-normal (Acryl baking) finish; Protection for temperature rise of device caused by direct sun light, radiation heat, etc. Y138D Silver-corrosion-resistant (Acryl baking) finish; Protection for above-mentioned temperature rise and resistance for corrosive geses. (Note: Silver finish is not applicable for alkaline gases.) |

Model Number Table

Ex: NW35-1E-A

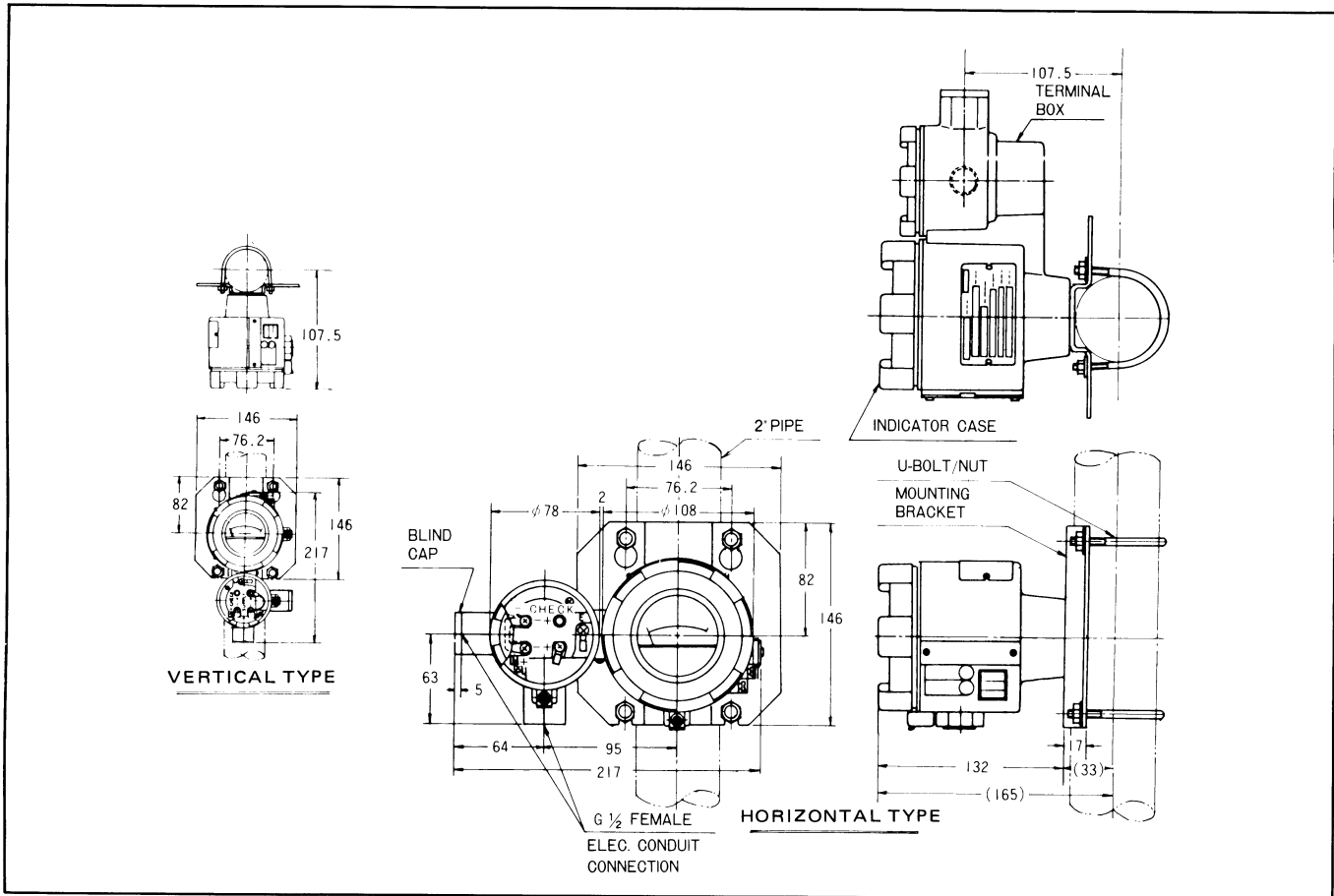
| Basic Model No. | Selection | | Option | Description |
|-----------------|-----------|---------|--------|-------------------------------------|
| | Type | Housing | | |
| NW35 | | | | Field Type Current Signal Indicator |
| | - 1 | | | Horizontal Type |
| | - 2 | | | Vertical Type |
| | | H | | Intrinsic - safety Type |
| | | | -X | No Option |

Note)

When ordering "Y" options, please write as;

NW35Y-1E-A(Y□)

Dimensions



Specifications are subject to change without notice.



Yamatake Corporation
Advanced Automation Company

1-1-32 New Stage Yokohama, Shin-urashima-cho,
 Kanagawa-ku, Yokohama, Kanagawa-ken 221-0031, Japan

URL: <http://www.azbil.com>