



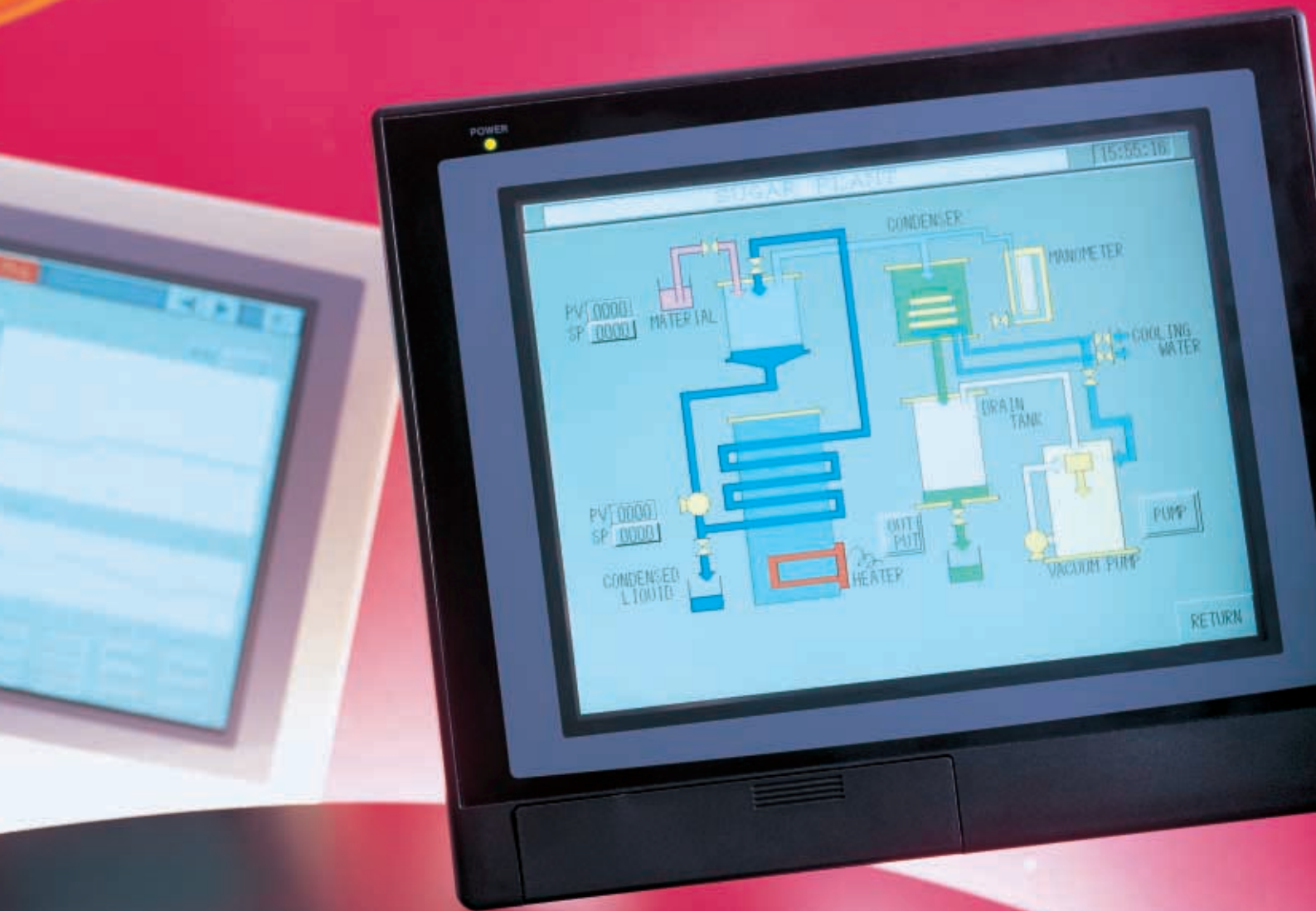
Smart Terminal
EST555Z

Multi-channel Programmable Touch Screen

Crystal clear images!

*Introducing the new **EST555Z**.*

*The **EST555Z** signals a next-generation type of programmable touch screen with its superior flexibility and is capable of responding to multi-channel and data management requests.*



Introducing a new style of touch screens for the future

A large, bright, screen that is easy-to-view Multiple user-friendly functions

A wide screen TFT color LCD that is bright and easy to view. Ample functions support ever-changing application requirements. The EST555Z is a newly designed touch screen developed by thoroughly pursuing solutions to the requirements of space, wiring and savings in engineering hours.



Equipment is continually being downsized while at the same time peripheral devices to be installed are being miniaturized more and more.

Nevertheless, the requests for a large highly precise human-machine interface are increasing in order to process large volumes of information.

This EST555Z has been made to respond to the requests of today and the demands of tomorrow.

The work for operators can be made more simple by the effective use of the large-sized display, drawing of multiple screens, full communication functions, and software packaging. The CF (compact flash card), which is ideal for information storage, and facilitates collecting data.

The flexibility of the EST555Z assures that it can meet any application need.

Hardware

256-color TFT, mounting for the CF (Compact Flash) on the front face and easy maintenance provisions.

Savings on wiring costs and time

Efficiently wired networks with multi-channel communications and wireless communications.

EST555Z

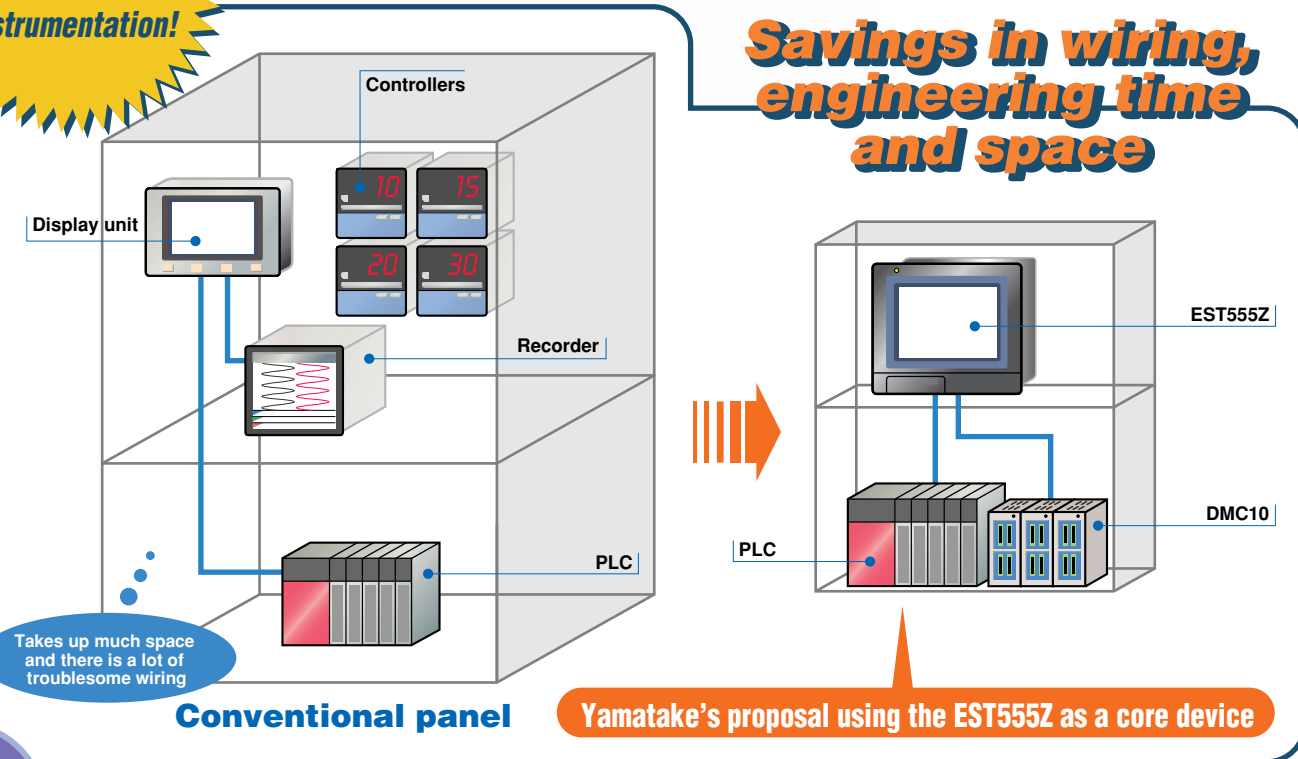
Advanced functions

Superior reporting functions such as trend recording, alarm history, etc.

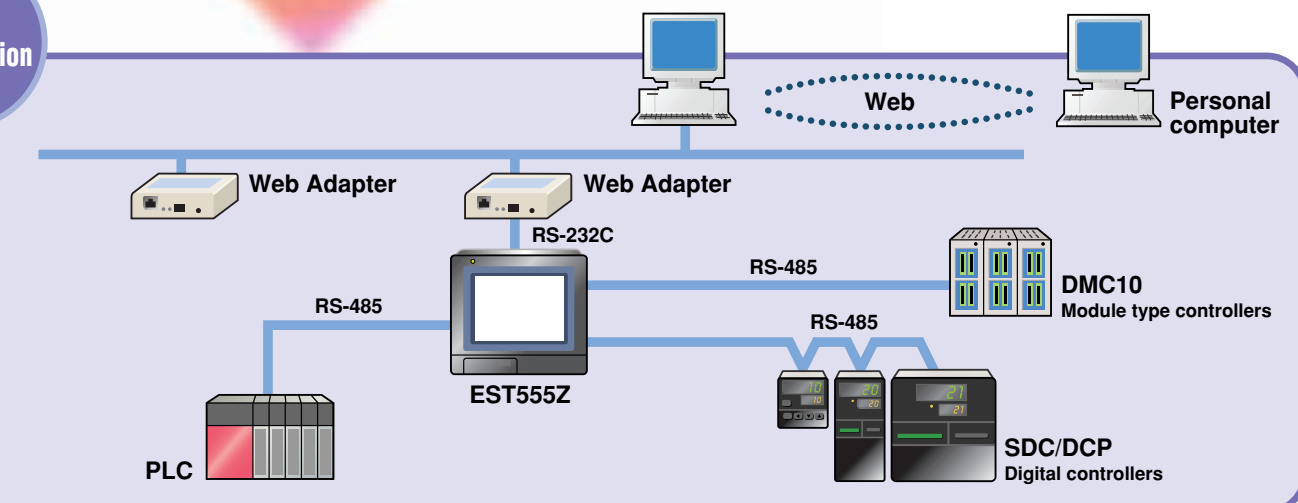
Software

Engineering work made easy by using an AP Editor and various packaging software.

Revolutionizing the future of instrumentation!



System configuration



Hardware and software

The EST555Z is able to respond to various demands with its superior hardware and easy-to-use software.

Easy-to-view screens with 256-color TFT color LCD

A wide 640x480 pixel screen and the 256-color TFT offers crystal clear images.



256-color TFT color

Compact flash card

A 64MB Compact Flash Card can be used. Trend data can be stored with the recorder smart objects.

Applications can be uploaded or downloaded.*

*:under development



Easy creation of applications

Application data can be easily created with the AP Editor.



Reduce engineering work by using the package software

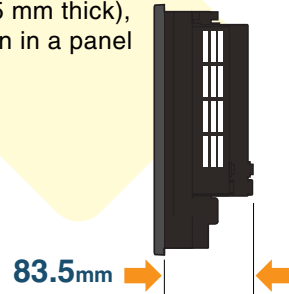
In addition to the AP Editor, useful package software is available for applications between the EST and connected devices. Applications can be configured without creating any new screens or communication settings for the devices to be handled.

Instruments supported by the package software

- DMC10 Module type controller
- AHC2001 Advanced hybrid controller

Slim design facilitates easy installation in the panel

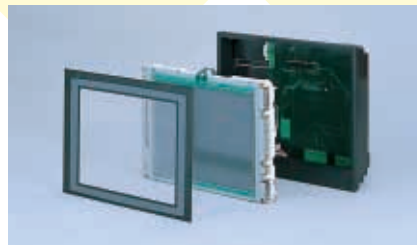
The EST555Z is thin (83.5 mm thick), thus, facilitating installation in a panel with confined space.



Servicing made easy

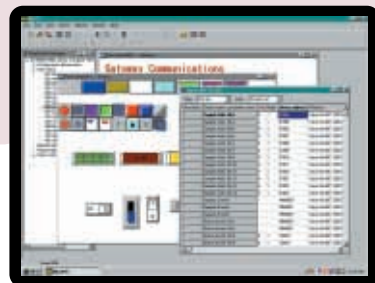
Replacement of consumable parts such as the backlight, LCD, touch switch and battery can be easily done from the front.

Maintenance can be performed simply without disconnecting any wires.



AP editor for effective use of data assets

Object applications created with the AP Editor can be utilized in other applications.



Wiring and Communications savings

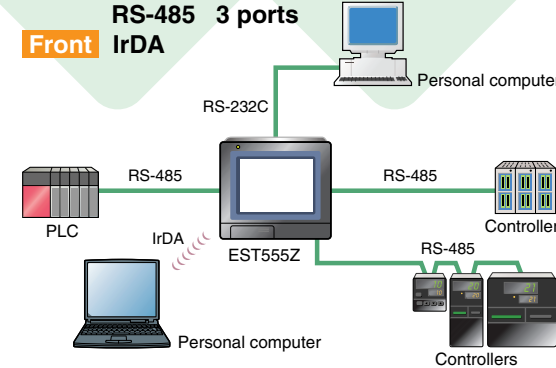
Multiple communication functions help create convenient and comfortable communication environments.

Multi-channel communications

The EST555Z is provided with a 5-channels for communications.

This helps in realizing high expandability and capabilities to deal with various applications.

- Rear RS-232C 1 port
- RS-485 3 ports
- Front IrDA



Wireless communications through IrDA

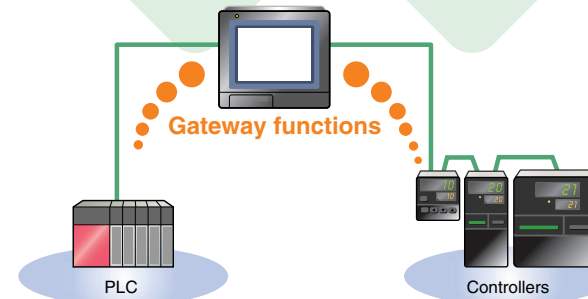
With an IrDA located on the front, data communication can be performed with a personal computer without the need for any wiring.

This is ideal for when data must be transferred in the field.



PLC load reduction with the gateway function

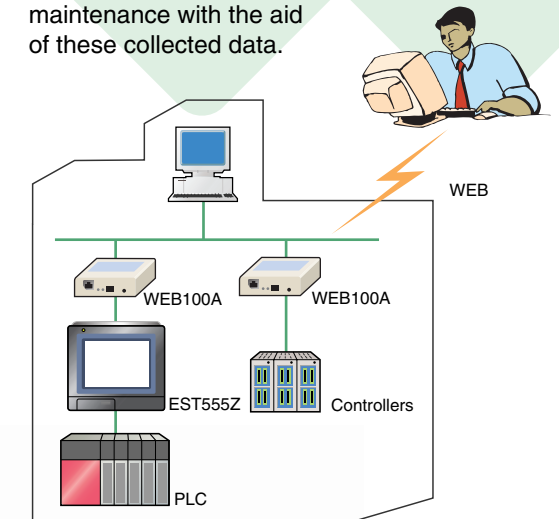
A gateway function is provided for the data transfer between a PLC and a controller or among different types of PLCs, thus, resulting in no need for programming for complicated data communication.



- Considerable reduction of program loading for PLCs.
- Cost reductions since there is no preparation necessary for the PLC communication module.
- Shortening of data write time for controllers, etc.

Easy remote maintenance

The operational data from peripheral control products can be collected using the EST555Z as the central connection point. Users such as equipment manufacturers can easily perform remote maintenance with the aid of these collected data.

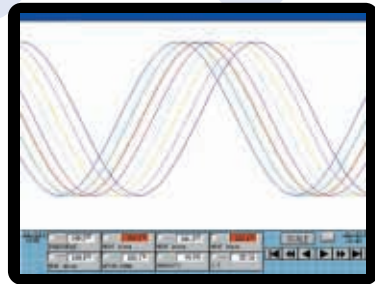


Multiple functions

The wide variety of outstanding functions that the EST555Z has allows the user to adapt their process to ever diversifying applications.

Excellent trend display functions

The demand for paperless recorders is increasing as awareness for the environment and reductions in operating costs become more important. With its trend function, the EST555Z is able to display in detail the trend graph for operations such as equipment temperature management.

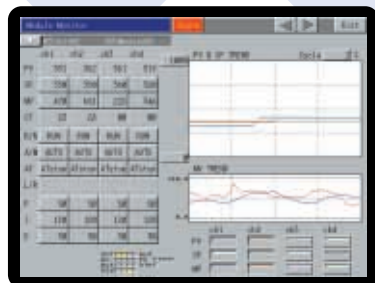


Using alarm history for equipment operation management

The alarm history function can help an operator find out when equipment maintenance is to be performed, and monitor at a glance the current condition of operation. A maximum of 400 alarm points can be automatically collected and displayed.

Effective use of trend and alarm history data

Trend and alarm history data can be transferred to a personal computer in the form of a CSV file. The data can also be utilized with software such as Microsoft® EXCEL for Windows.



Easy debugging using the PLC monitor functions

The AP Editor can allow the user to monitor debugging operations of the PLC which is connected to the EST555Z. This is very useful for the monitoring bit/word data and also to write data.



Profile and recipe management functions

Installing software to organize the PLC or controller data for each model was considerably troublesome. Because of this, the EST555Z was designed so as to easily process and transfer setting data and operation parameters for each model by integrating the recipe management function with the AP Editor.

The EST555Z Smart Terminal has great trend functions. No more need for recorders!!

Recorders are generally used for data collection, but the cost of the recorders, chart paper, pens and other consumable parts are expensive. Expenses can be lowered considerably by using the trend functions of the EST555Z with the additional benefits of simple, compact and low cost instrumentation.



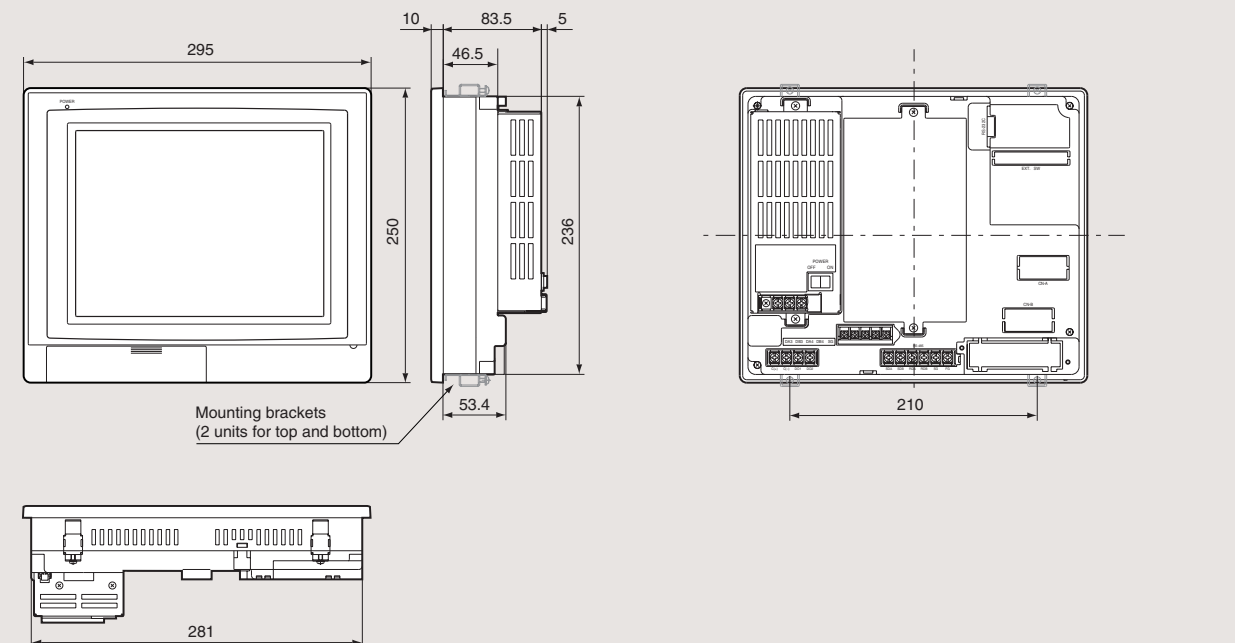
Specifications

Item	Specification
Display color	256 colors (bmp and JPEG mode), 64 colors (smart objects)
Display device	640x480 pixels, color TFT
Touch switch	Analog type
Interface	CH0: IrDA CH1: RS-232C CH2: RS-485 (full/half duplex) CH3: RS-485 (half duplex) CH4: RS-485 (half duplex) Parallel: DO 2 points
Compact flash	64MB: Trend storing for recorder objects, application data storing and transferring
Service life of backlight	50,000 hours
Service life of touch switches	1 million times
Noise resistance	±1000V for 50ns to 1μs
Impact resistance	Conforms to C0912: at 98 m/s ² for 20ms or less
Vibration resistance	Conforms to JIS0911, the equipment is exposed to 10 to 55Hz vibrations, 9.8 m/s ² in X, Y and Z directions, simple sweep: 6 minute., 2 hours in each direction
Storage temperature	-20 to +60°C
Operating temperature	0 to 50°C
Storage humidity	30 to 85% RH (no condensation allowed)
Operating humidity	30 to 85% RH (no condensation allowed)
Protective structure	IP64 (dust-protected, splash-proof)
Dielectric strength	500Vac for 1 min. (between power supply-FG terminals, between signal cables and power supply/FG terminals)
Power supply voltage	85 to 132Vac at 50/60Hz or 24Vdc±10%
Weight	2.7kg

Maintenance parts

Model No.	Description
ESTX955BL11	Backlight, for EST555Z with date code 0208 or earlier
ESTX955BL12	Backlight, for EST555Z with date code 0212 or later
ESTX955SS10	Panel protective sheet for white body, clear (standard)
ESTX955SS20	Panel protective sheet for black body, clear (standard)
81446345-001	Battery

Dimensions



Selection Guide

Model No.	Description	Power supply	Memory card
EST0555Z01*EX00	256 color TFT	100Vac	No
EST0555Z01*ES00	Programmable display unit		Yes
EST0555Z05*EX00	10.4 type LCD	24Vdc	No
EST0555Z05*ES00	640 x 480 pixels		Yes

EST0555Z01*EX00
B: Black case
W: White case

AP Editor, package software

Model No.	Description
ESTX240SWWEC000	AP Editor for Windows 98, Me, XP VER4.4 CD
ESTX220D5AE3001	DMC10 Package for EST555Z, 3.5inch floppydisk



Optional Devices

Model No.	Description
SCF0640	CF Card (64MB compact flash card)
SCFADP000	Adaptor (for PCM CIA) for PC card conversion
ESTX939FB00	Mounting bracket (attached to the body)
CBL232FFT02	RS-232C cable (2m) 9-9 PIN



CF card



Adaptor for PC card conversion

Yamatake products supported by the EST555Z

DMC10 Module type controller

The DMC10 is a controller that helps the user realize space, wiring and engineering hour savings.

Features

- $\pm 0.5\%$ FS accuracy, and 0.5s sampling cycle
- Full-multiple inputs, various input combinations and channel isolations
- Conforms to CE certification requirements
- Setting and managing can be performed with a personal computer loader
- A maximum 15 modules can be connected



DMC50 Module type controller

The DMC50 is a controller capable of customizing various functions, thus bringing quality instrumentation controls closer to the customer.

Features

- ± 0.05 to $\pm 0.1\%$ FS accuracy, and 0.5s sampling cycle
- Allows custom designing of analog processes
- Stable control with the DMC50's new built-in algorithm
- Flexible compliance to multiple networks such as Ethernet
- Perfectly suited for applications requiring quick response



EST240Z Smart Terminal

Smart functions condensed in a compact body Ideal for diversifying visual needs.

Features

- STN device with 256-color display
- A bright screen with excellent visibility and a wide viewing angle
- RS-232C, RS-485 and IrDA
- Intelligent functions such as a recording function
- Easy packaging with controllers



WEB100A Web adaptor

The introduction of a new user interface for the Internet age Conversion from serial interfaces to a Web network is simple.

Features

- Easy monitoring of information on equipment operating conditions through the Web
- Utilization of the Web despite the lack of network capabilities
- No Web server required resulting in cost reductions
- Compact design with its small size and light weight
- Convenient for control management of air conditioning, illumination, acoustic equipment, etc. in buildings.



SDC/DCP Series digital indicating controllers

One is able to select a controller suitable for application needs from large product line-up.

Features

- Abundant product variation
- A wide variety of models available, all with built-in communication functions
- Setup operations can be easily performed with a personal computer loader
- Easy-to-view displays.



CAUTION

The product has been designed, developed and manufactured for general purpose applications for machinery and equipment. The product shall be handled with extra caution to provide fail-safe and/or redundant design in the applications that require strict safety as those listed below.

- applications pertaining to the protection of human life
- applications pertaining directly to controlling transportation equipment and machinery (start/stop control, etc.)
- applications pertaining to aircraft
- applications pertaining to spacecraft
- applications pertaining to nuclear reactors

Do not use this device in applications where the device's functions are directly responsible for human safety.

•Windows® 98/Me/XP are the trademarks of U.S. Microsoft Corporation.

Specifications are subject to change without notice.

YAMATAKE

Yamatake Corporation
Control Products Division

Head office: Totate International Building
2-12-19 Shibuya Shibuya-ku Tokyo 150-8316 Japan

Inquiries to: International Business Division
Phone: 81-3-3486-2331, Fax: 81-3-3486-2300 (Sales)

Phone: 81-466-20-2307, Fax: 81-466-27-9264 (Customer Service)

URL: <http://www.yamatake.com>

Savemation
Saving through Automation

This has been printed on 100% recycled paper.

Printed in Japan.(SZ)
Issued Sep.2002