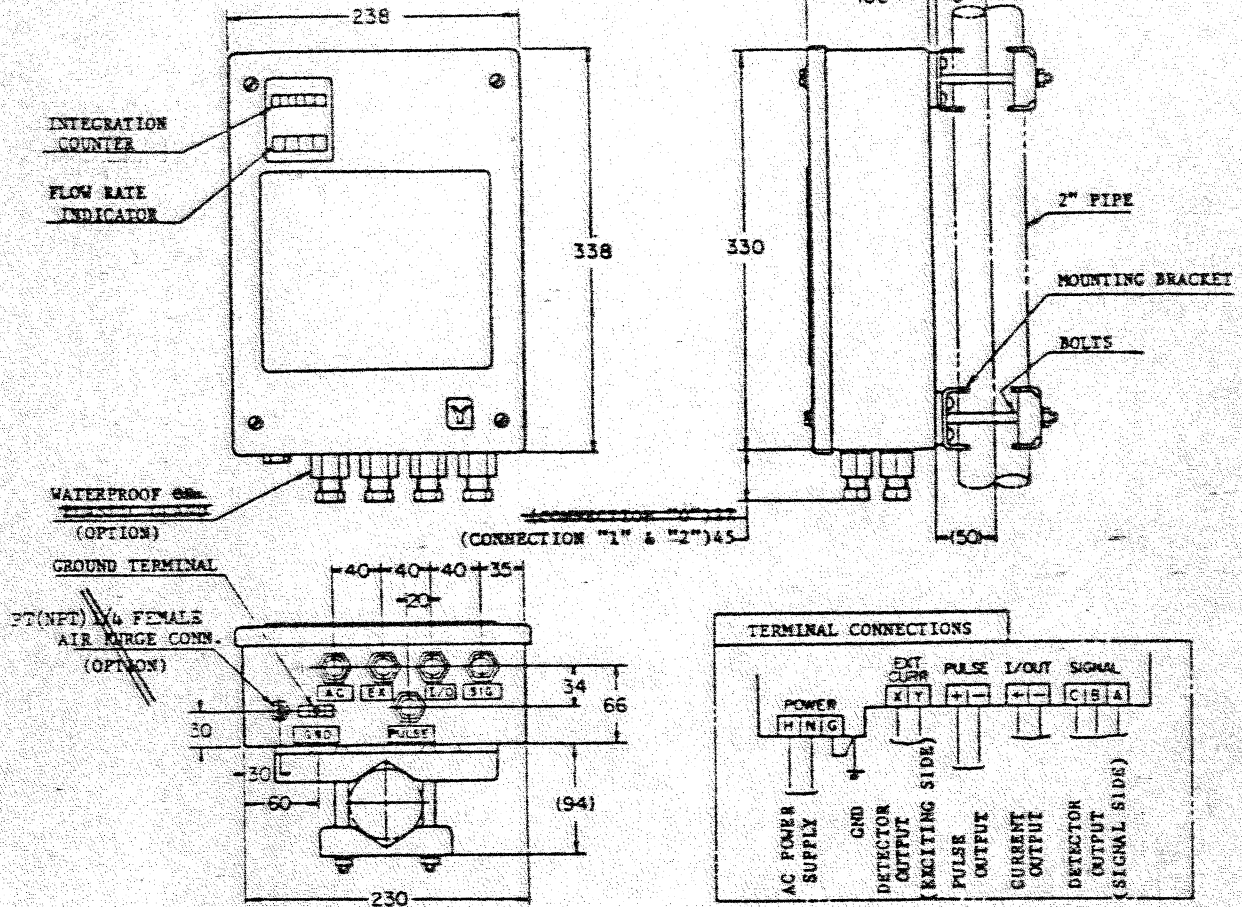


DIMENSION DRAWING



MODEL NUMBER SYSTEM

BASIC MODEL NUMBER	SELECTIONS			MOUNTING	CONNECTION	OPTION	DESCRIPTION
	POWER SUPPLY	OUTPUT ANALOG/DIGITAL	COUNT. TER.				
NNB100							OUTDOOR TYPE CONVERTER
	-1						AC220/240V, 50Hz/60Hz
	-3						AC100V, 50Hz/60Hz
	-5						AC110/115V, 50Hz/60Hz
	-7						AC120V, 50Hz/60Hz
							4~20mA DC
		0	0				NO SELECTION
		4	0				COUNTER DRIVING PULSE OUTPUT
		5	0				HIGH SPEED VOLTAGE PULSE OUTPUT
		6	0				MERCURY RELAY CONTACT PULSE OUTPUT
		5	1				HIGH SPEED VOLTAGE PULSE OUTPUT + INTEGRAL COUNTER WITH MANUAL RESET
		6	1				MERCURY RELAY CONTACT PULSE OUTPUT + INTEGRAL COUNTER WITH MANUAL RESET
		7	1				INTEGRAL COUNTER WITH MANUAL RESET
					T		2 inch PIPE MOUNT TYPE
					0		W/ PLASTIC GLAND, W/O AIR PURGE CONN.
					1		W/ WATERPROOF GLAND, W/O AIR PURGE CONN.
					2		W/ WATERPROOF GLAND, W/ AIR PURGE CONN.
					-X		NO OPTION

SEMI-STD SPECIFICATIONS

- Y138A: CORROSION-RESISTANT FINISH
- Y138B: CORROSION-RESISTANT FINISH (ACRYL BAKING)
- Y138C: CORROSION-PROOF FINISH
- Y149: LIGHTNING ARRESTER
- Y149A: FOR 4~20mA DC OUTPUT
- Y149B: FOR 4~20mA DC AND PULSE OUTPUT
- Y150A: HIGH ACCURACY CALIBRATION

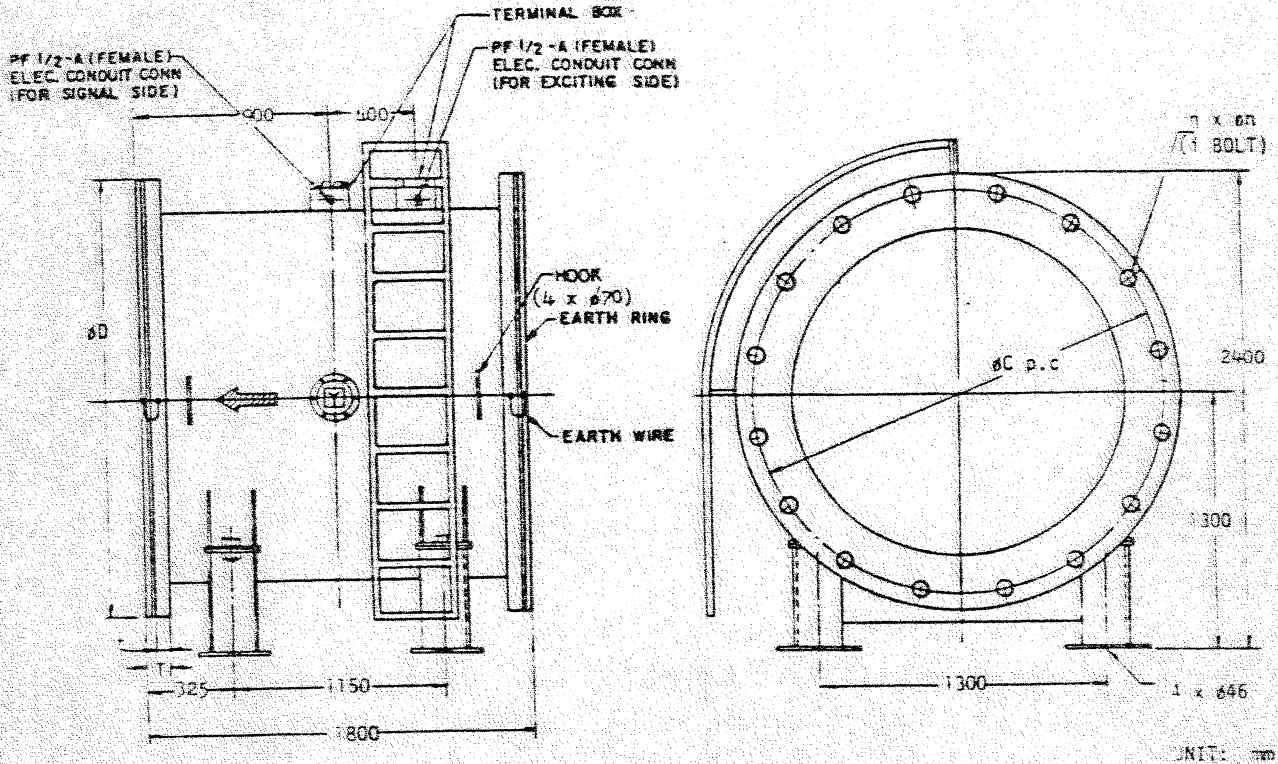
STANDARD SPECIFICATIONS

- INPUT: OUTPUT OF MAGNEW SERIES DETECTOR
- INPUT IMPEDANCE: 300MΩ OR GREATER
- OUTPUT: CURRENT OUTPUT: 4~20mA DC
- PULSE OUTPUT: SCALED PULSE OUTPUT FOR COUNTER DRIVING (24V, 30ms) -- 0 TO 10Hz (ADJ)
- SCALED HIGH SPEED VOLTAGE PULSE OUTPUT (15V, 400μs) -- 0 TO 1000Hz (ADJ)
- SCALED MERCURY RELAY CONTACT PULSE OUTPUT -- 0 TO 10Hz (ADJ), (CONTACT CAPACITY 100V, 1A)

- CASE CONSTRUCTION: JIS C 0920 WATER-PROOF, NEMA 4 ENCLOSURE
- FINISH: CORROSION-RESISTANT (ACRYL BAKING) FINISH
- COLOR: DARK BEIGE (MUNSEL 10YR 4.7/0.5)
- WEIGHT: APPROX. 8.4 kg (W/ WATERPROOF GLAND +0.8 kg)

MAGNEW CONVERTER OUTDOOR TYPE ELECTROMAGNETIC FLOWMETER (PIPE MOUNT TYPE)	MODEL NO. NNB100 T
Yamatate Honeywell Co. Ltd. PROCESS CONTROL DIVISION TOKYO JAPAN	DATE REF
	DRAWING NO.

DIMENSION DRAWING



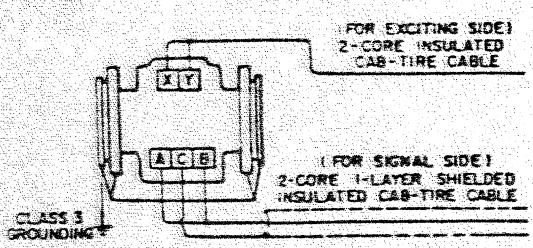
FLANGE DIMENSION

NOMINAL SIZE	FLANGE RATING	D	t	T	C	s	h	1 BOLT
1800 mm (72 inch)	ANSI 125	2197	35	63	2096	60	50	125

MODEL NUMBER SYSTEM

BASIC MODEL NO	SEMI-ST'D	NOMINAL SIZE	ELECT. RODE MAT'L	FLANGE RATING	GROUND RING MAT'L	OPTIONS	DESCRIPTION
NNM 120							CHLOROPRENE RUBBER LINING DETECTOR
NNM 121							POLYURETHANE RUBBER LINING DETECTOR
	Y						SEE SEMI-ST'D SPECIFICATION
		-1800					800mm (72 inch)
			L				SUS316L
			K				TITANIUM
			M				MONEL
				11			JIS 10K
				12			JIS 20K
				21			ANSI 150
				31			JIS G 5527 FOR WATER WORKS
				41			SIN ND10
				99			ANSI 125
					S		SUS 316
					K		TITANIUM
					-X		NO OPTION
					-C		WITH WATER-PROOF GRIND

TERMINAL LOCATIONS



SEMI-ST'D SPECIFICATION

- Y138A : CORROSION-RESISTANT (ACRYL BAKING) FINISH
- Y138B : CORROSION-RESISTANT (EPOXY BAKING) FINISH
- Y150A : HIGH ACCURACY CALIBRATION
- Y163A : MATERIAL OF FLANGE : SUS304

MagneW-M GENERAL USE TYPE		(NOMINAL SIZE)	MODEL NO.
ELECTROMAGNETIC FLOWMETER DETECTOR		1800mm (72 inch)	NNM 121 - 1800
Yamatake-Honeywell Co. Ltd.		DATE	DRAWING NO.
PROCESS CONTROL DIVISION		REF.	
TOKYO JAPAN			