

SP.NO.	Yamatake Corporation				製品仕様書 SPECIFICATIONS	
		<p>VOLTAGE AND FREQUENCY: R4715B1003-1 AC100V, 50-60Hz R4715B1011-1 AC200V, 50-60Hz</p> <p>POWER CONSUMPTION: 5W+25% max.</p> <p>ALLOWABLE VOLTAGE RANGE: 85 to 110% of rated voltage</p> <p>CONTACT RATINGS: Fan Motor AC120V 2A, AC240V 1A Ignition Transformer 250VA Pilot Valve 100VA Main Valve 100VA Alarm 75VA</p> <p>SEQUENCE: Non-recycle</p> <p>SEQUENCE TIMING: (at rated voltage, room temp. and humidity)</p> <p>Pre-purge 15±4 sec. Ignition trial 4±1 sec. Post ignition 11±4 sec. Lock-out 23 sec. max. Flame response 1.5±0.5 sec. (at 2μA)</p> <p>FLAME RESPONSE: (at room humidity)</p> <p>Flame establishment detection: 1μA max. (standard flame current 2 to 6μA) Flame-out detection: 0.2μA min.</p> <p>For wiring the flame rod, use the following wire: JAN standard (MIL spec.) RG-11/U or RG-114/U, or equivalents</p> <p>INSULATION RESISTANCE: Should be more than 50MΩ by DC500V megger between each terminal and grounding. (except terminal 4 and 6)</p>				
6					作成DR. Hirakawa 2-3-84	尺度 SCALE 記入のない公差TOL: UNLESS NOTED
5	02				検閲CHK Yamamoto 2-3-84	形番 MODEL R4715B1003-1,1011-1
4					認可APPD. Shiragaki 2-3-84	名称 NAME FSG15-LSI PROTECTORELAY
3	02	JEO95-0620	10-3-95	I.H	I.W	日付DATE: 2-7-84
2	改番 REV.	来歴 RECORD	日付 DATE	担当 BY	検閲 APPD.	図番 NO. AD10142E
頁	改番					改番REV. 02 / 6

製品仕様書

SPECIFICATIONS

DIELECTRIC STRENGTH:

Should be capable of withstanding a potential of AC1000V (for 100V model) or AC1500V(for 200V model) 50 or 60Hz for 1 minute, or AC1200V(for 100V model) or AC1800V(for 200V model) for 1 second between each terminal and grounding.
(except terminal ④,⑥)

AMBIENT TEMPERATURE: -20 to 60°C

AMBIENT HUMIDITY: 90%RH max. at 40°C

FLAME DETECTOR TO BE USED WITH: Flame rod

LIFE: 100,000 cycles operation
(at room temperature/humidity, rated voltage, and rated load)

DISPLAY: Indication of FLAME/ALARM lights at normal flame ON and flickers at alarming.

THUNDER LIGHTNING SURGE: 10KV, 1.2 / 50 μsec.
(JEC-212, surge impedance 75 ohms min.)

Connect the surge absorber 83968019-001(Spec. No. 10013) between terminal 7 side of power source and grounding.

FAN MOTOR OPERATION: Fan motor does not stop when safety switch is operating.

作成 DRWN.	検 査 CHKD	承認 APPD.	日 付 DATE
H. Hirabara Feb. 3. '84	Y. Yamamoto Feb. 3. '84	S. Shinagaki Feb. 3. '84	84-2-7
形 番 MODEL		R4715B1003-1,1011-1	
名 称 NAME		FSG15-LSI PROTECTORELAY	
来歴 REV	日付 DATE	記 事 DESCRIPTION	改 訂 REV NO.
	作成 DRWN	検 査 CHKD	図 番 DRWG.NO.
			10142E 2/6

製品仕様書

SPECIFICATIONS

WARNING IN USE:

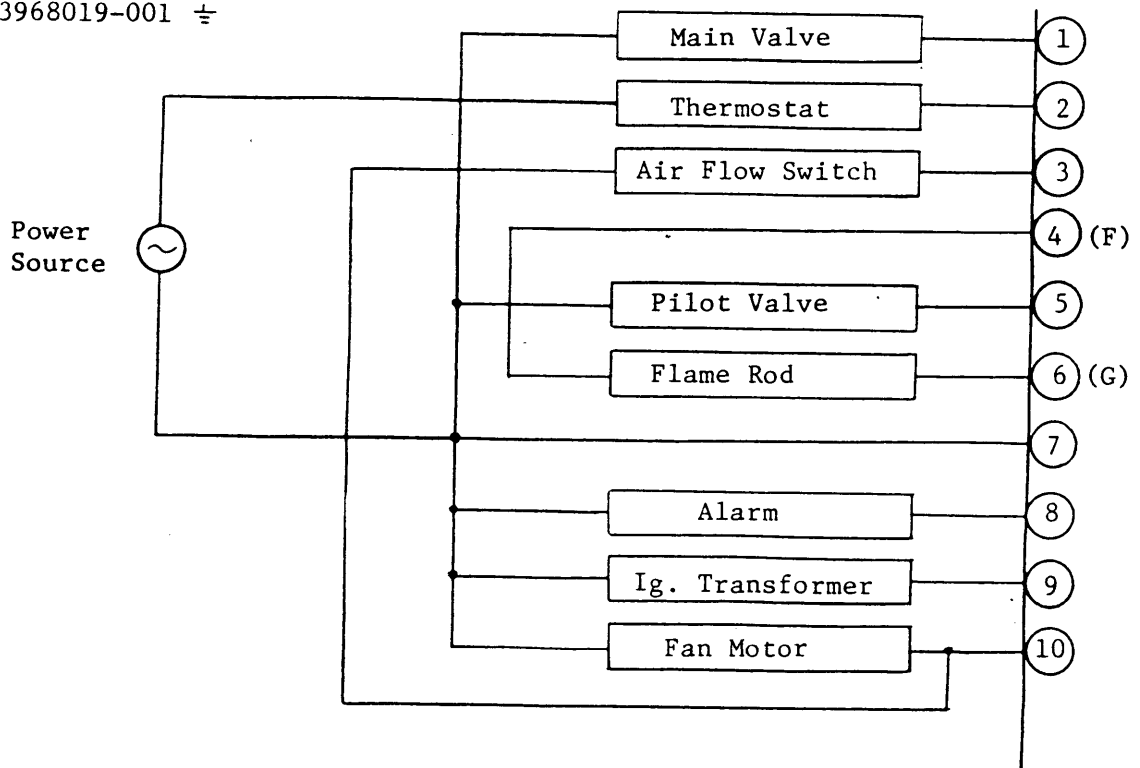
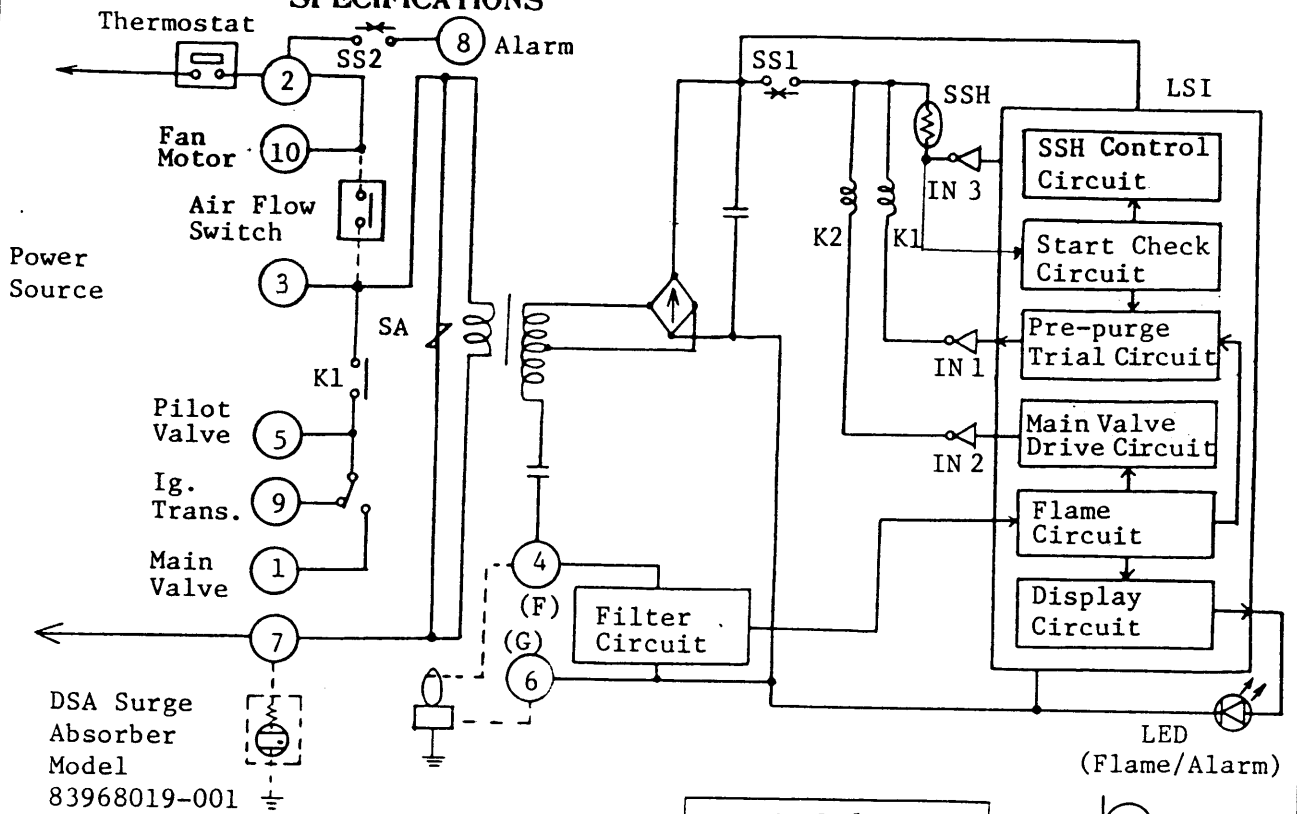
- (1) Confirm wiring after wiring connection. Miswiring may result in breakdown or misoperation.
- (2) Disconnect power supply before beginning wiring to terminals to prevent equipment damage.
- (3) Provide grounding in compliance with Class 3 grounding of the Engineering Code for Electric Equipment and ground the boiler body.
- (4) Power source line and high tension cable of ignition transformer should be wired away from leadwire of flame rod and low voltage wire. Especially, high tension cable of igniter must be wired solely and more than 10cm away from Protectorelay.
- (5) Do not install this product where,
 - special chemicals or those vapor exist (ammonia, sulfur, chlorine, ethylene compound, acid, etc.)
 - exposed to splash or waterdrop
 - exposed to high temperature
 - vibration continues for a long period
- (6) Connect firmly high tension cable of ignition transformer. Contact failure may generate high-frequency wave to result in noise of radio, etc. and misoperation. Install ignition transformer on burner body or directly on metal part connected electrically with burner body.

作成 DRWN.	検図 CHKD	承認 APPD.	日付 DATE
H. Hirabawa Feb. 3 '84	Y. Yamamoto Feb. 3 '84	S. Shogaki Feb. 3 '84	84-2-7
形番 MODEL		R4715B1003-1, 1011-1	
名称 NAME		FSG15-LSI PROTECTORELAY	
図番 DRWG. NO.	10142E 3/6		改番 REV. NO.

来歴 REV	日付 DATE	記事 DESCRIPTION	作成 DRWN	検図 CHKD
-----------	------------	-------------------	------------	------------

製品仕様書

SPECIFICATIONS



作成 DRWN.	検図 CHKD	承認 APPD.	日付 DATE
H. Hirabawa Feb. 3 '84	Y. Yamamoto Feb. 3, '84	S. Shinazaki Feb. 3 '84	94-2-7
形番 MODEL		R4715B1003-1, 1011-1	
名称 NAME		FSG15-LSI PROTECTORELAY	
図番 DRWG. NO.	10142 E 4/6		改訂 REV. NO.

※ 日付 記号 DESCRIPTION

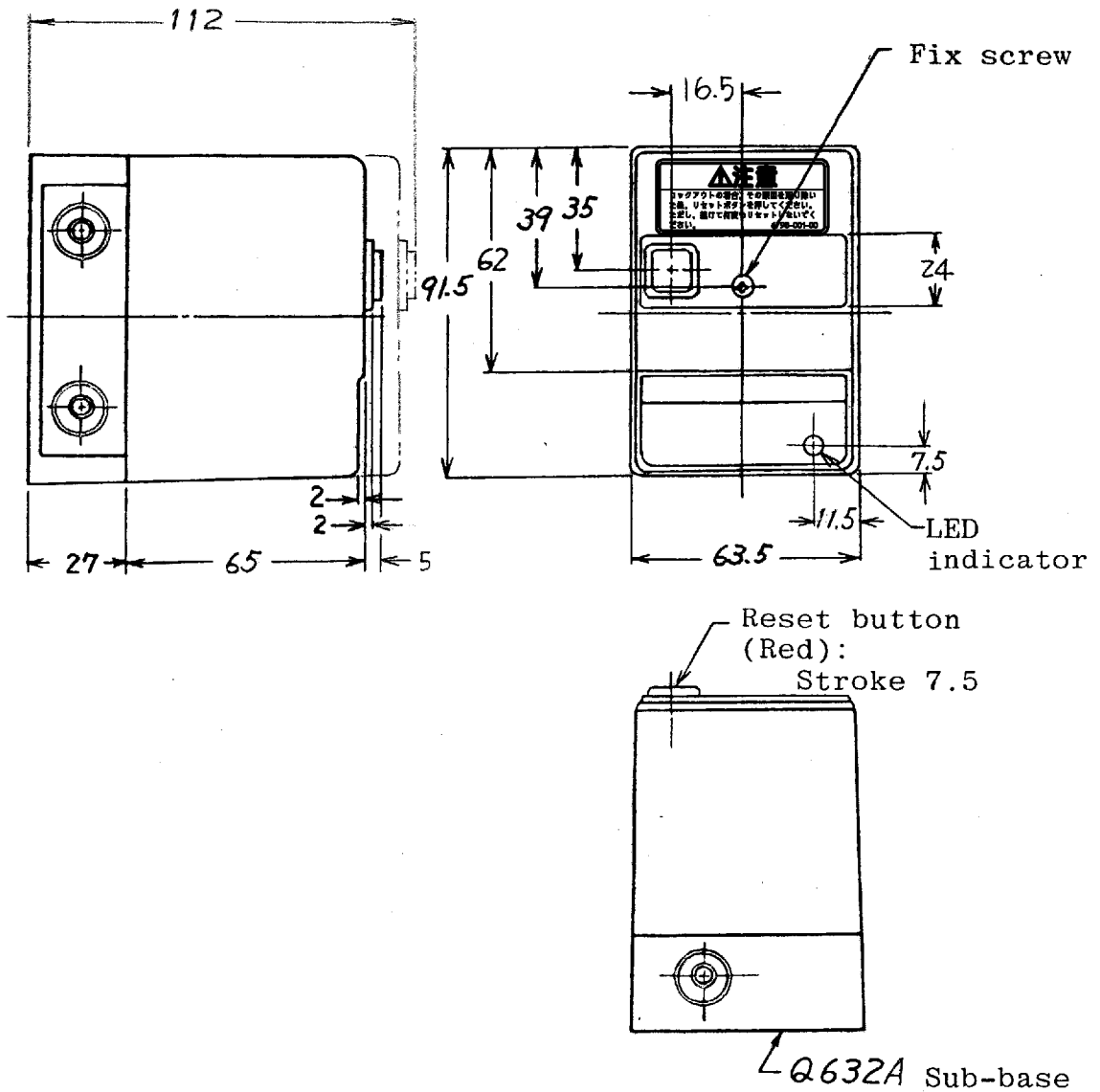
作成 検図
DRWN CHKD

A4 E L X (F)

製品仕様書

SPECIFICATIONS

Dimension for removing the device.



For terminal arrangement, refer to sheet 4/6

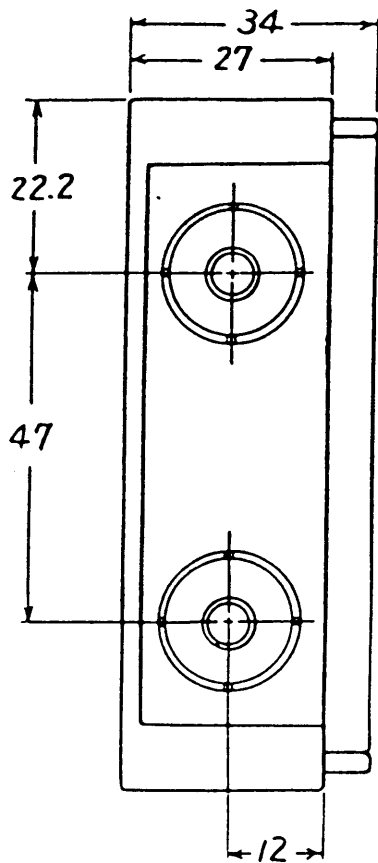
For wiring, refer to sheet 4/6

作成 DRWN.	検図 CHKD	承認 APPD.	日付 DATE
<i>Y. Watanabe</i>	<i>M. Ogino</i>	<i>Y. Kishi</i>	10.2.'95
Jan. 30 '84	Jan. 30 '84	Jan. 31. '84	
形番 MODEL	R4715B1003-1, 1011-1		
名称 NAME	FSG15-LSI PROTECTORELAY		
図番 DRWG.NO.	AD10142E	5/6	改番 REV.NO. 02

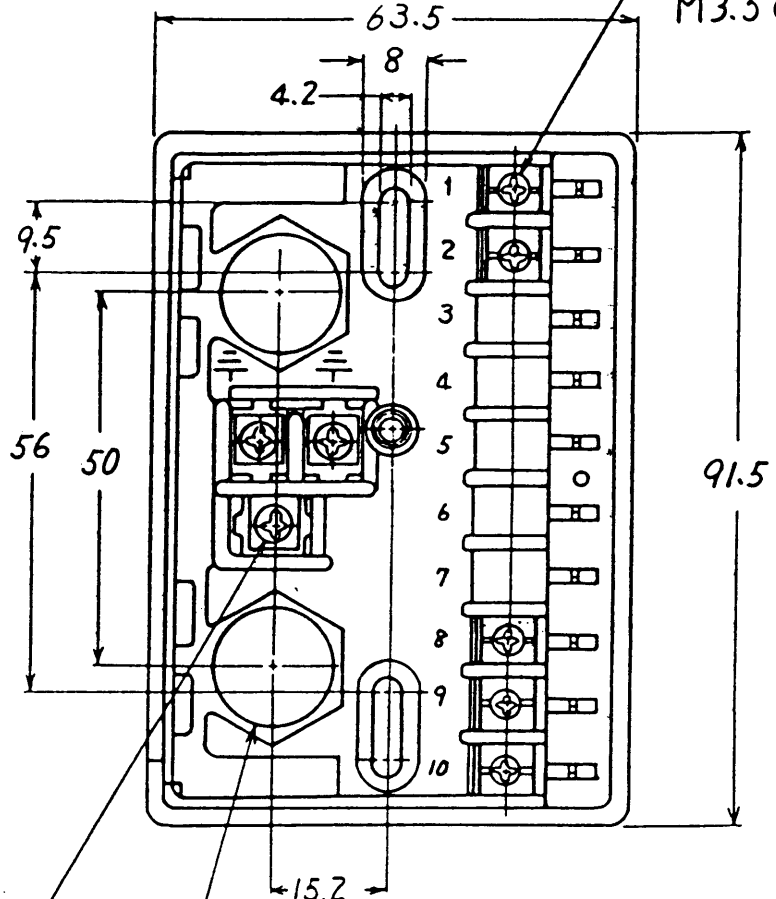
02	10.2.'95	JE095-0620	I.W	Y.N
1	'84 4-24	ADD TO DIMENSION, DIMENSION CHANGE (7.5→11.5)	<i>M.S</i>	<i>M.O</i>
来歴 REV	日付 DATE	記事 DESCRIPTION	作成 DRWN	検図 CHKD

製品仕様書

SPECIFICATIONS

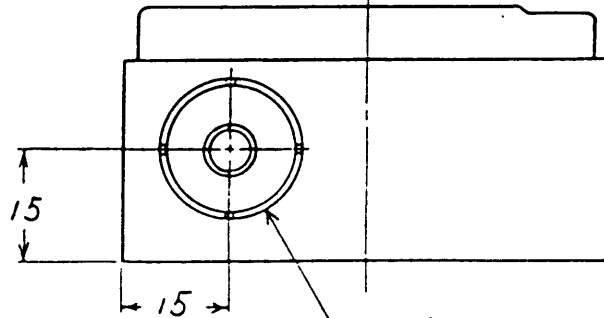


Terminal screws
M4 (3)



Terminal screws
M3.5 (10)

Knockouts for conduit
Pg 9 ($\phi 15.5$) (2)



Knockouts for conduit
Pg 11 ($\phi 19$) (4)

Q632A SUB-BASE

作成 DRWN.	検図 CHKD	承認 APPD.	日付 DATE
<i>y. watanabe</i>	<i>M. Ogino</i>	<i>H. Kirishi</i>	84-2-7
Jan. 30 '84	Jan 30 '84	Jan. 31, '84	
形番 MODEL	R4715B1003-1, 1011-1		
名称 NAME	FSG15-LSI PROTECTORELAY		
図番 DRWC.NO.	10142E		改 REV.NO. 6/6

来歴 REV DATE 記事 DESCRIPTION

作成 DRWN 検図 CHKD

SP.NO.

Yamatake Corporation

製品仕様書
SPECIFICATIONS

“RESTRICTIONS ON USE”

This product has been designed, developed and manufactured for general-purpose application in machinery and equipment.

Accordingly, when used in applications outlined below, special care should be taken to implement a fail-safe and/or redundant design concept as well as a periodic maintenance program.

- Safety devices for plant worker protection
- Start/stop control devices for transportation and material handling machines
- Aeronautical/aerospace machines
- Control devices for nuclear reactors

Never use this product in applications where human safety may be put at risk.

1	00	00	First issue	12-2-02	Harada	Miura
頁	改番	改番	来歴	日付	担当	検閲
	REV.	REV.	RECORD	DATE	BY	APPD.