

ATN110A Ignition Transformer



FEATURES

The ATN110A is an ignition transformer for commercial and industrial burners. Simply by changeover tap, it can be used on either 100 V or 200 V primary voltage.

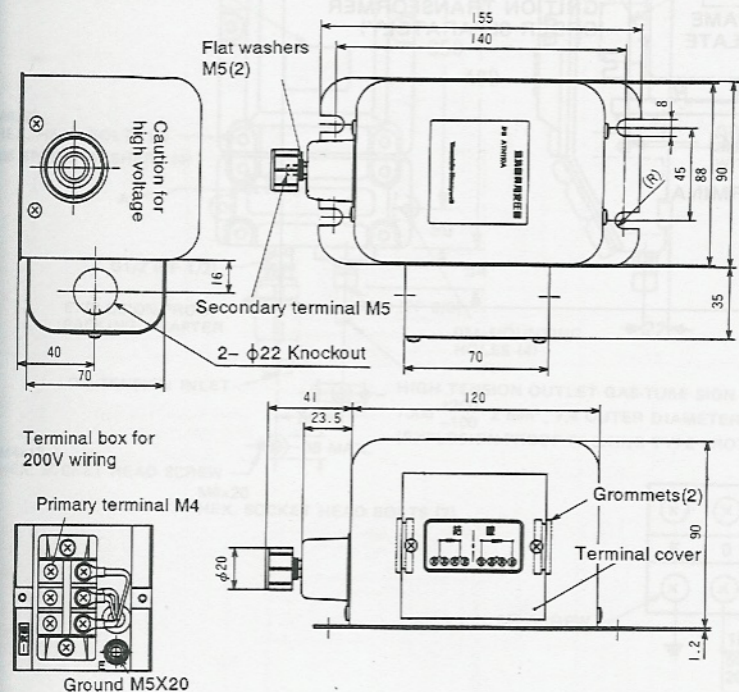
- Splash-proof box (APN4708) for ATN110 and Explosion-proof model (APN4709) are also available.

SPECIFICATIONS

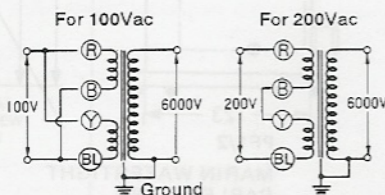
Primary Voltage	Rated voltage	100/200Vac, 50/60Hz, selectable by tap
	Allowable voltage	85 to 110% of rated voltage
Secondary Voltage	Rated voltage	6000V
	Allowable voltage	6000V \pm 10% (secondary opened)
	Secondary current	23mA (50Hz), 18mA (60Hz)
	Grounding method	One point grounding
Capacity	160VA (50Hz), 120VA (60Hz)	
Operation time rating	Continuous	
Recommended Spark Gap	2 mm	Caution : If used above the recommended values, the transformer may be damaged.
Recommended Air Velocity in Gap	5 m/s	
Secondary Wiring Distance	1.5m max. Use a neon tubing cable (JIS C3308) or a high voltage automotive cable (JIS C3405).	
Insulation Resistance	500M Ω min. between primary wiring and ground terminal by 500Vdc megger.	
Dielectric Strength	1500V for one min. or 1800V for one sec. between primary wiring and ground terminal.	
Induction Resistance	1.5 time primary rated voltage (100/200Vac) to primary terminals for one min. under secondary open circuit.	
Ambient Temperature	-20 to +55 $^{\circ}$ C	
Ambient Humidity	95%RH max. at 40 $^{\circ}$ C	
Color	Black	
Weight	Approx. 3.45 kg	
Mounting	By 4 screws	
Standard Attachments	2 grommets for conduit	
Accessory	APN4708 splash-proof case (separate order)	

DIMENSIONS

[in mm]



WIRING



Note: Wiring set for 200V at factory before shipment

R : Red
B : Black
Y : Yellow
BL : Blue