

# M7284C,Q

## Modutrol-IV Motors



The M7284C,Q are proportional motors used to operate dampers and valves when used with a modulating 4-20mA current source. They provide proportioning control of zone dampers and valves.

An oil-immersed motor and gear train provide reliable performance and long life.

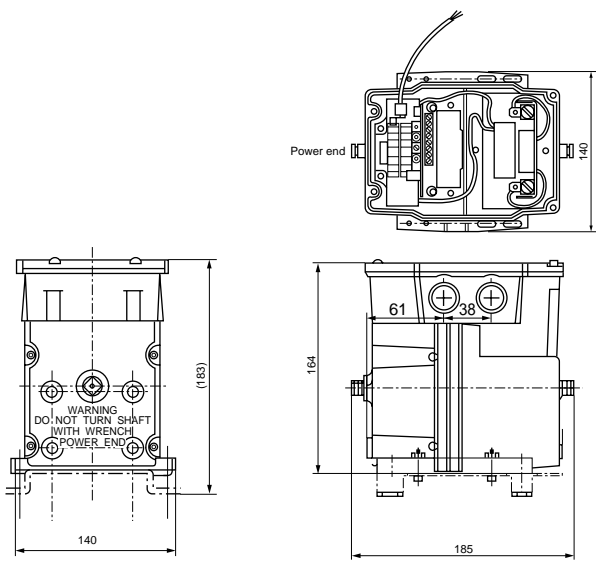
### Specifications

Output torque	16.9N-m
Max. permissible load weight	890N
Feedback potentiometer nominal value	115Ω
Materials and finish	Magnesium die-cast priming surface (housing and cover) Aluminum die-cast priming surface (motor mount)
Power supply	24Vac, 50/60Hz
Power consumption	23W or less
Ambient temperature	-10 to +50°C
Ambient humidity	90%RH max. 40°C (no condensation allowed)
Weight	Approx. 3.5kg
Conforming standards	UL: File No. E4436 Guide No.XAPX CSA: General listing file No. LR95329-1, Volume 10, Section 37, Class 4813-02
Standard attachments	Mounting bracket (Part No. 220738A)
Auxiliary devices (order separately)	External transformer - <b>AT72-J1</b> Internal transformer - <b>204737C</b> (100Vac) - <b>204737B</b> (200Vac) - <b>198162EA</b> (120Vac) - <b>198162GA</b> (240Vac)

### Selection Guide

Model No.	Type	Input signal	Rotating angle (stroke)	Rotating time (s) at 60Hz	Maximum torque (N-m)	Auxiliary switch	Replaced M744 Series Model No.
M7284C1067	Standard	4 to 20mAdc	160°	60	17.0	Provided	M744B201
M7284C1059	Standard	4 to 20mAdc	90°	34	17.0	Provided	M744E201 (with partial replacement)
M7284Q1041	Split	4 to 20mAdc	160°	60	17.0	Provided	M744C201
M7284Q1033	Split	4 to 20mAdc	90°	34	17.0	Provided	M744D201

### Dimensions (unit:mm)



ACTUATORS