

Spring Type Piston Cylinder Model VA6

Introduction

The Spring Type Piston Cylinder (VA6) is designed for higher supply air pressure than that of G-O-Motor. The VA6 provides rigid construction and is generally used as an actuator in high pressure service in conjunction with the Single Acting Valve Positioner (VPP08) for proportional control.

Specification

Model:	Model	Handwheel
	VA6R	Not provided
	VA6RS	Provided

Action: Reverse action

Materials: Cylinder; STPG38

Piston; SS41

Yoke; FCD45

Actuator stem; SUS420J2

Guide bushing; Resin

Sealing parts; Nitril butadiene rubber

Spring range: 1.9 to 4.0kgf/cm²

Supply air pressure: 5kgf/cm²

Pneumatic connection: Rc1/4 internal thread (With Rc1/4 or Rc3/8 adapter available)

Ambient temperature: -30 to +70°C

Optional accessories (provided upon request):

Positioner (HEP15/16/VPP08), pressure regulator with filter, handwheel (side), limit switch, solenoid valve, motion transmitter, volume booster, and others available.

Performance (with UPP08 positioner):

Output; Refer to Table1, page1.

Hysteresis error; 1%FS or less

Linearity; ±1%FS or less (with positioner)

Dimensions: Refer to Figure1, Table2.

Weight: Refer to Figure1, Table2.

Finish: Grayish green (Munsell 5B4/1) or silver, or other specified colors.

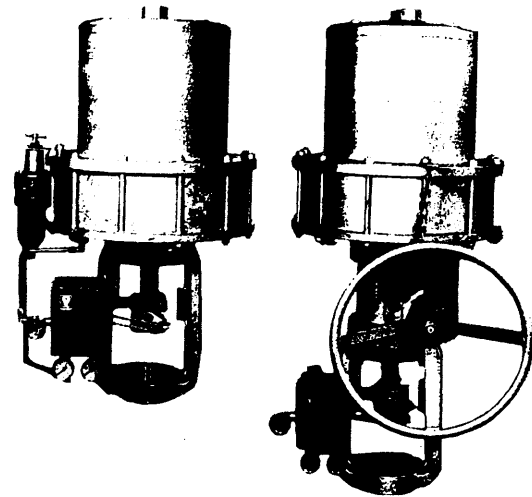


Table 1. Output and stroke

Model No.	Maximum Stroke (mm)	Cylinder Dia. (ϕ mm)	Internal Capacity of the Cylinder (ℓ)	Output Force (kg)	
				Downward	Upward
VA6	50	390	8.4	4,200 to 2,000	1,000 to 3,200

Note: Output force are shown for the strokes at upper and lower limits.

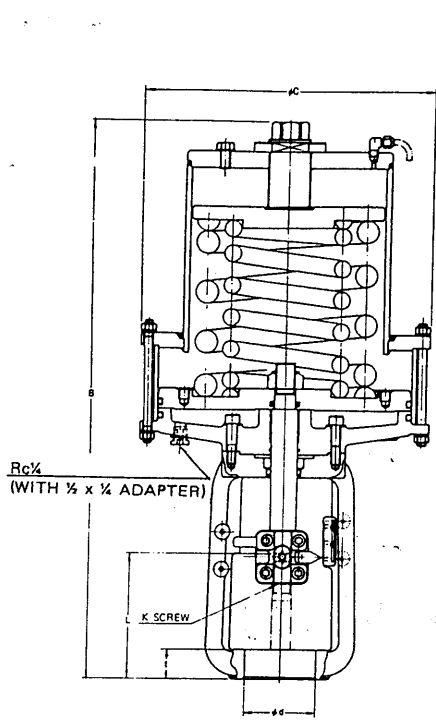


Fig. 1-1. Without Handwheel

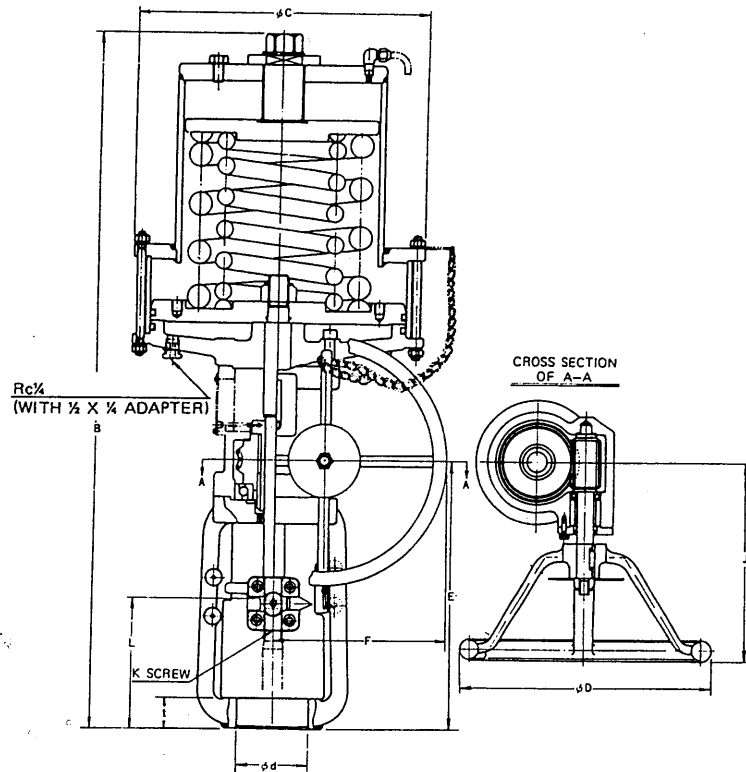


Fig. 1-2. With Handwheel

Table 2. Dimensions and weights

(in mm)

Model No.	Manual handwheel	B	φC	L	K Screw	t	φd	F	E	J	φD	Weights (kg)
VA6R	without	855	445	180	M28×1.5 or M24×1.5	45	110	—	—	—	—	200
VA6RS	with	1055						265	400	295	380	230

Notes: L dimensions are as measured when the piston is in the lower most position.

Fig 1. Dimensions

Ordering Information

When ordering, please specify;

- 1) Model number
- 2) Spring range
- 3) Stroke
- 4) Optional accessories