

Item No. / Qty	1		1		Ref. No.	
Tag No.	TCV-6				Purchaser	
Service					End user	
<Control valve>					Project	
					<Remarks>	
Model	HCB			SV0703-105		Indicating unit : "kgf/cm2"
Description	Pressure Balanced Cage Type Control Valves			SV0601-001		Air piping Connection: 1/4 NPT
Body/Port size	4 in.		4 in.		SV0602-002 Air piping: Vinyl covered copper tube. Joint:Cr plated with vinyl cap	
Conn. Size. / Rated CV			175		SV0101-004 Flange facing finish : Serration ANSI B16.5 (Spiral)	
Rating / Conn. Type	ANSI150		FF		SV0201-007 Seat leakage: Less than 0.5%CV (Equivalent IEC, JIS Class II)	
Body material	SCPH2					SV0212 Cage plug with piston ring
Trim material	SCS24					SVL006 Rustproof
Flow characteristic	EQ%					c/w Stop Valve(1/4NPT) inlet of Air Regulator KZ03
Bonnet	PLAIN (-17 to 230 degC)					Old Production No : S-C5631-41-030
Actuator / Handle	HA2R		---			
Action	AIR TO OPEN					
Gland packing / Grease	P4519		---			
Gasket	V543,V8590					
Air supply / Spring range	2.8kgf/cm2		0.8-2.4kgf/cm2			
Seat leakage	CLASS II					
Color: Body/Diaph./Yoke	M10B5/10	M10B5/10	M10B5/10			
Paint	Standard					
<Accessories>						
Positioner	AVP300-PSD2B-1DYT-X					
Structure	Water-proof, 1/4 NPT, 1/2 NPT					
Input signal	4-20 mADC					
Regulator	KZ03-2B-XX				1	
Regulator2						
Limit switch						
Action						
Solenoid valve						
Action / Power						
Booster						
Air lock valve						
<Process data>						
Fluid name/Phase	STEAM			STEAM		
	MAX	NOR	MIN	Unit		
Flow rate	5600			kg/h		
Inlet pressure	8			kgf/cm2G		
Outlet pressure	7			kgf/cm2G		
Differential press.	1			kgf/cm2		
Shut-off press.	9			kgf/cm2		
Temperature	198			degC		
Density/Gravity(Liq)				kg/m3		
Density/Gravity(G,V)	4.292			kg/m3(A)		
Viscosity	0.01589			mPa-s		
Flash				%		
Calculated CV	105.5					
Travel	84			%		
Outlet velocity	0.09657			Mach		
Predictive SPL	75			dBA		
<Piping spec.>						
Strength Calc. Sheet						
Design					kgf/cm2G	
Temp.					degC	
Size			4 in.		4 in.	
Sch No.			40		40	
Thickness			6		6	
<b>Yamatake Corporation</b>						

\* The drawing shall be handled as reference.  
 \* この図面は参考情報として取扱いをお願いします。

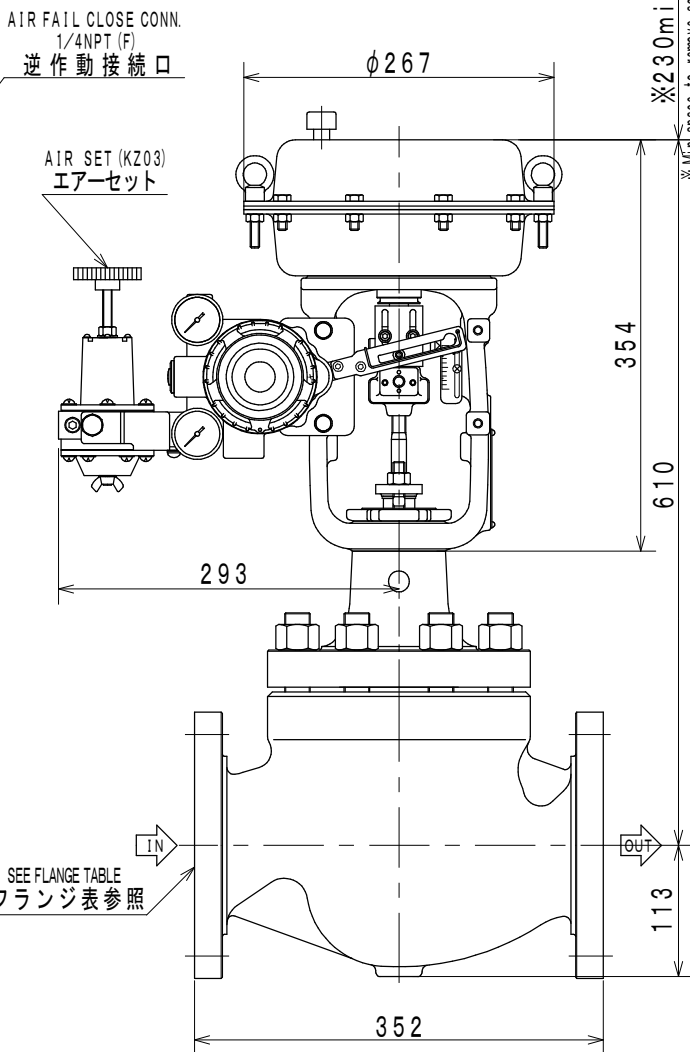
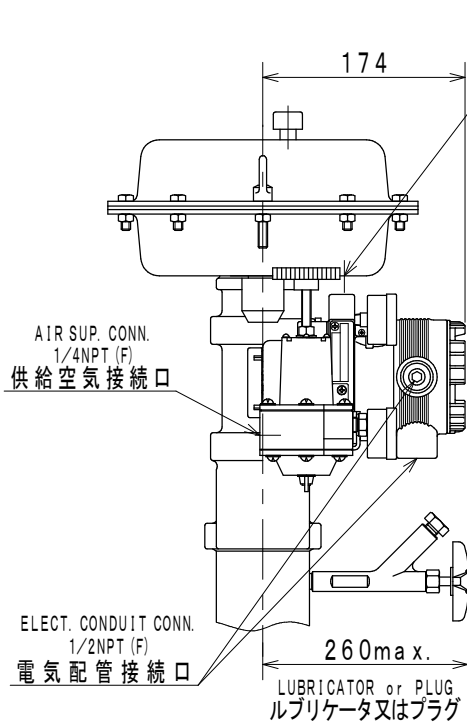
1

2

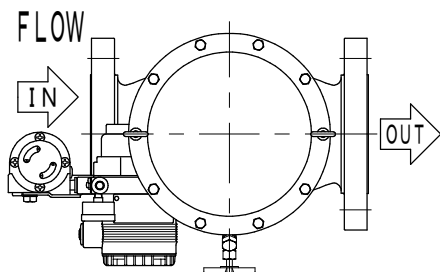
3

4

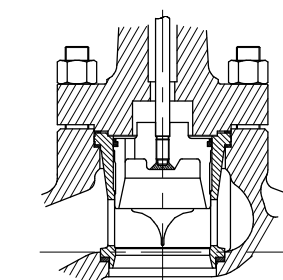
5



※230min.  
 ※Min space to remove actuator  
 ※操作器取外しに必要な最小寸法



ORIENTATION  
 配管取付姿勢 No. 1



TRIM STRUCTURE (EXAMPLE)  
 トリム構成図 (参考)

PROD. No. :  
 工事番号 :  
 TAG No. : TCV-6

UNIT : mm

NOMINAL SIZE(INCH) 口径 (B)	RATING 圧力定格 (フランジ規格年度)	END CONNECTION 接続形式	BONNET TYPE 上蓋形式	ACTUATOR 操作器	VALVE ACTION 弁作動	TRAVEL トラベル	WEIGHT 概算質量(kg)
4	ANSI150 (1981)	FF	PLAIN TYPE 常温形	HA2R	AIR TO OPEN	38	71

Press. Balanced Cage Type Control Valve  
 プレッシュバランス形ケージ調節弁

MODEL No.  
 HCB

**Yamatake Corporation**

DRAWING No.  
 HCB-EA1F1V-VCR04B0

REV.  
 0

A

B

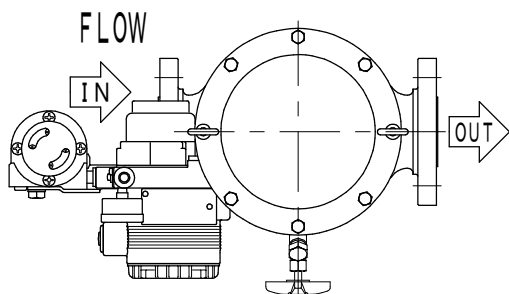
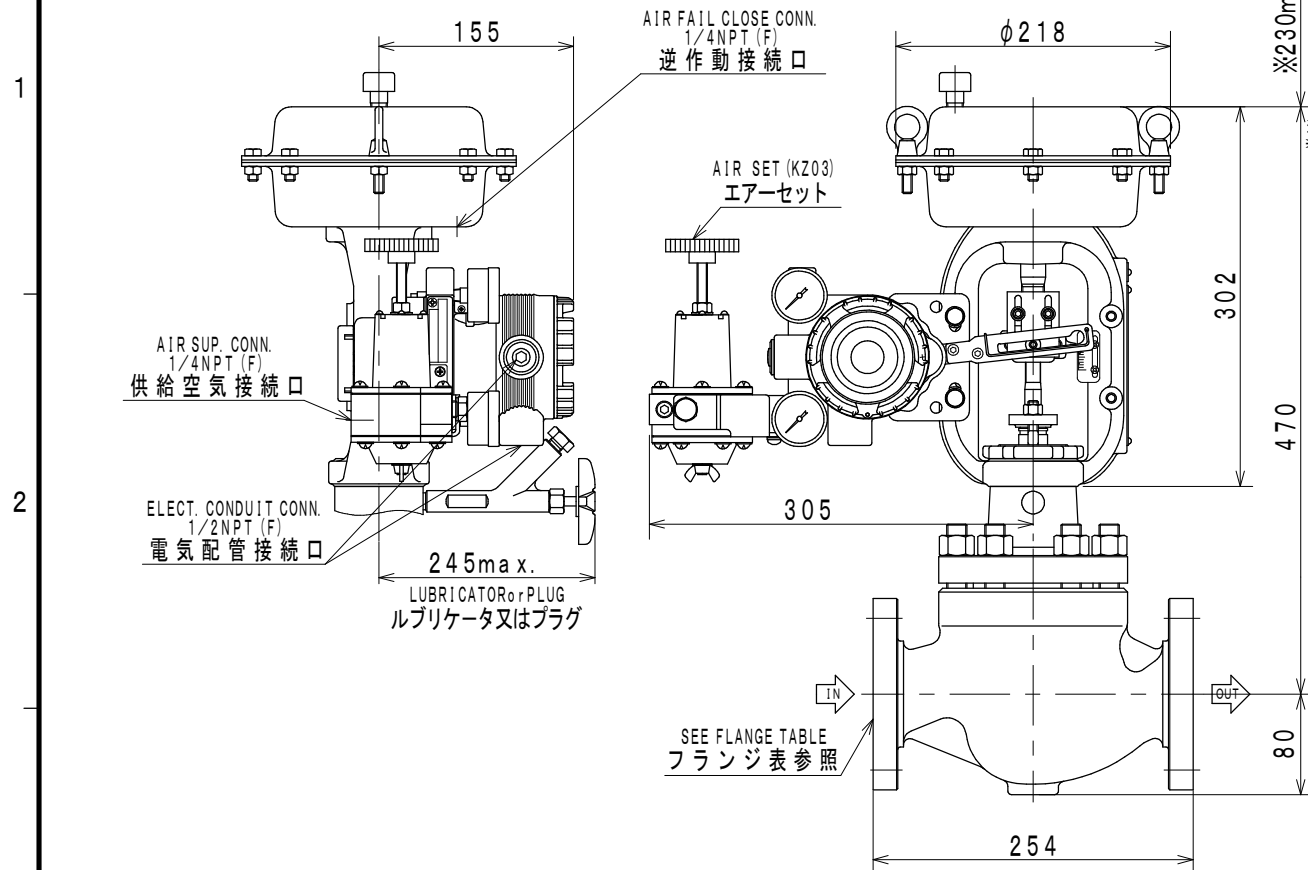
C

D

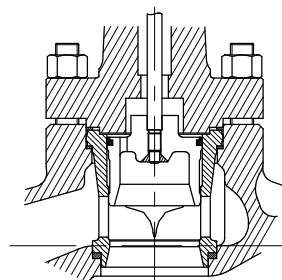
E

Item No. / Qty	2		2		Ref. No.	
Tag No.	TCV-11				Purchaser	
Service					End user	
					Project	
<b>&lt;Control valve&gt;</b>					<b>&lt;Remarks&gt;</b>	
Model	HCB				SV0703-105 Indicating unit : "kgf/cm2"	
Description	Pressure Balanced Cage Type Control Valves				SV0601-001 Air piping Connection: 1/4 NPT	
Body/Port size	2 in.		2 in.		SV0602-002 Air piping: Vinyl covered copper tube. Joint:Cr plated with vinyl cap	
Conn. Size. / Rated CV			44		SV0101-004 Flange facing finish : Serration ANSI B16.5 (Spiral)	
Rating / Conn. Type	ANSI150		FF		SV0201-007 Seat leakage: Less than 0.5%CV (Equivalent IEC, JIS Class II)	
Body material	SCPH2				SV0212 Cage plug with piston ring	
Trim material	SCS24				SVL006 Rustproof	
Flow characteristic	EQ%				c/w Stop Valve(1/4NPT) inlet of Air Regulator KZ03	
Bonnet	PLAIN (-17 to 230 degC)				Old Production No : S-C5631-41-060	
Actuator / Handle	PSA1R		---			
Action	AIR TO OPEN					
Gland packing / Grease	P4519		---			
Gasket	V543,V8590					
Air supply / Spring range	2.8kgf/cm2		0.8-2.4kgf/cm2			
Seat leakage	CLASS II					
Color: Body/Diaph./Yoke	M10B5/10	M10B5/10	M10B5/10			
Paint	Standard					
<b>&lt;Accessories&gt;</b>						
Positioner	AVP300-PSD2B-1DYS-X					
Structure	Water-proof, 1/4 NPT, 1/2 NPT					
Input signal	4-20 mADC					
Regulator	KZ03-2B-XX			1		
Regulator2						
Limit switch						
Action						
Solenoid valve						
Action / Power						
Booster						
Air lock valve						
<b>&lt;Process data&gt;</b>						
Fluid name/Phase	STEAM			STEAM		
	MAX	NOR	MIN	Unit		
Flow rate	1500			kg/h		
Inlet pressure	8			kgf/cm2G		
Outlet pressure	7			kgf/cm2G		
Differential press.	1			kgf/cm2		
Shut-off press.	9			kgf/cm2		
Temperature	198			degC		
Density/Gravity(Liq)				kg/m3		
Density/Gravity(G,V)	4.292			kg/m3(A)		
Viscosity	0.01589			mPa-s		
Flash				%		
Calculated CV	29.46					
Travel	87			%		
Outlet velocity	0.1035			Mach		
Predictive SPL	65			dBA		
<b>&lt;Piping spec.&gt;</b>						
Strength Calc. Sheet						
Design					kgf/cm2G	
Temp.					degC	
Size		4 in.		4 in.		
Sch No.		40		40		
Thickness		6		6		
<b>Yamatake Corporation</b>						

\* The drawing shall be handled as reference.  
 \* この図面は参考情報として取扱いをお願いします。



ORIENTATION  
配管取付姿勢 No. 1



TRIM STRUCTURE (EXAMPLE)  
トリム構成図 (参考)

PROD. No. :  
工事番号 :

TAG No. : TCV-11

UNIT : mm

NOMINAL SIZE (INCH) 口径 (B)	RATING 圧力定格 (フランジ規格年度)	END CONNECTION 接続形式	BONNET TYPE 上蓋形式	ACTUATOR 操作器	VALVE ACTION 弁作動	TRAVEL トラベル	WEIGHT 概算質量 (kg)
2	ANSI 150 (1981)	FF	PLAIN TYPE 常温形	PSA1R	AIR TO OPEN	25	38
Press. Balanced Cage Type Control Valve プレッシャバランス形ケージ調節弁					MODEL No. HCB		
Yamatake Corporation					DRAWING No. HCB-BA1F1V-BAR04B0		REV. 0

A

B

C

D

E