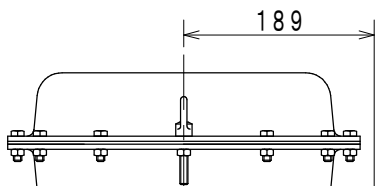


Item No. / Qty	1	1	Ref. No.	
Tag No.	207-PV-601		Purchaser	
Service			End user	
			Project	
<b>&lt;Control valve&gt;</b>			<b>&lt;Remarks&gt;</b>	
Model	HCB		SV0703-105 Indicating unit : "kgf/cm2"	
Description	Pressure Balanced Cage Type Control Valves		SV0601-001 Air piping Connection: 1/4 NPT	
Body/Port size	6 in.	5 in.	SV0602-002 Air piping: Vinyl covered copper tube. Joint:Cr plated with vinyl cap	
Conn. Size. / Rated CV		275	SV0101-004 Flange facing finish : Serration ANSI B16.5 (Spiral)	
Rating / Conn. Type	ANSI600	RF	SV0201-002 Seat leakage: Less than 0.1%CV (Equivalent IEC, JIS Class III)	
Body material	SCS13A		SV0212 Cage plug with piston ring	
Trim material	SCS14A STELLITE		SV0006-002 Tag No. plate mounted on Diaphragm case (Plate size and description are Yamatake standard.) HART AVP SP No.2	
Flow characteristic	EQ%		this selection based on Old Production No:S-A02V3-41-430	
Bonnet	EXT-1 (230 to 450 degC)			
Actuator / Handle	HA3D	---		
Action	AIR TO CLOSE			
Gland packing / Grease	P6610CH+P6528	PS6		
Gasket	V543,V8590			
Air supply / Spring range	4.0kgf/cm2	0.8-2.4kgf/cm2		
Seat leakage	CLASS III			
Color: Body/Diaph./Yoke	XXX	M10B5/10	M10B5/10	
Paint	Standard			
<b>&lt;Accessories&gt;</b>				
Positioner	AVP302-FSD3B-1DYT-X			
Structure	FM Explosionproof & Flameproof, 1/4 NPT, 1/2 NPT			
Input signal	4-20 mADC			
Regulator	KZ03-2B-XX		1	
Regulator2				
Limit switch				
Action				
Solenoid valve				
Action / Power				
Booster				
Air lock valve				
<b>&lt;Process data&gt;</b>				
Fluid name/Phase	HS (High Pressure Steam)		STEAM	
	MAX	NOR	MIN	Unit
Flow rate	6.7	2.3		t/h
Inlet pressure	45	45		kgf/cm2G
Outlet pressure				kgf/cm2G
Differential press.	0.3	0.3		kgf/cm2
Shut-off press.		45		kgf/cm2
Temperature	366	366		degC
Density/Gravity(Liq)				kg/m3
Density/Gravity(G,V)	16.59	16.59		kg/m3(A)
Viscosity	0.02212	0.02212		mPa-s
Flash				%
Calculated CV	111.4	38.25		
Travel	70	35		%
Outlet velocity	0.01036	0.003555		Mach
Predictive SPL	50	50		dBA
<b>&lt;Piping spec.&gt;</b>				
<b>Strength Calc. Sheet</b>				
Design				kgf/cm2G
Temp.	366			degC
Size	6 in.		6 in.	
Sch No.	40		40	
Thickness	7.1		7.1	
<b>Yamatake Corporation</b>				

\* The drawing shall be handled as reference.  
 \* この図面は参考情報として取扱いをお願いします。

1



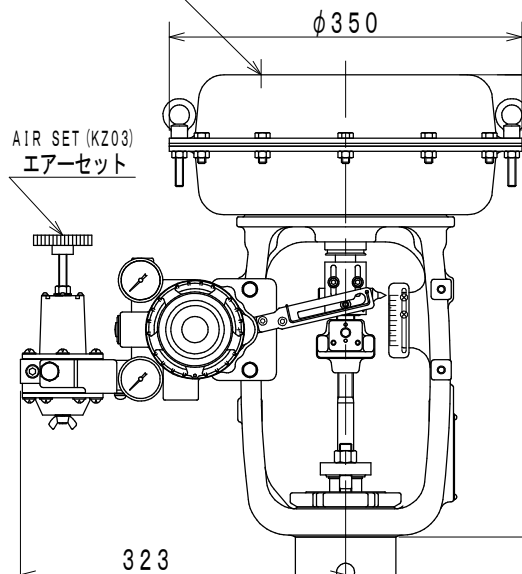
AIR SUP. CONN.  
1/4NPT (F)  
供給空気接続口

ELECT. CONDUIT CONN.  
1/2NPT (F)  
電気配管接続口

265max.  
LUBRICATOR or PLUG  
ルブリケータ又はプラグ

AIR FAIL OPEN CONN.  
1/4NPT (F)  
正作動接続口

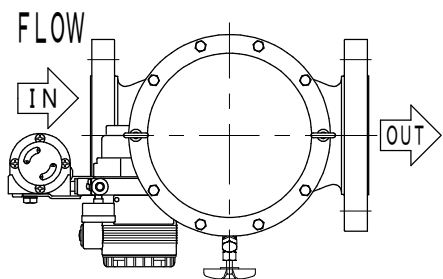
AIR SET (KZ03)  
エアセット



※29.5mm in.  
 ※Min. space to remove actuator  
 ※操作部取り外しに必要な最小寸法

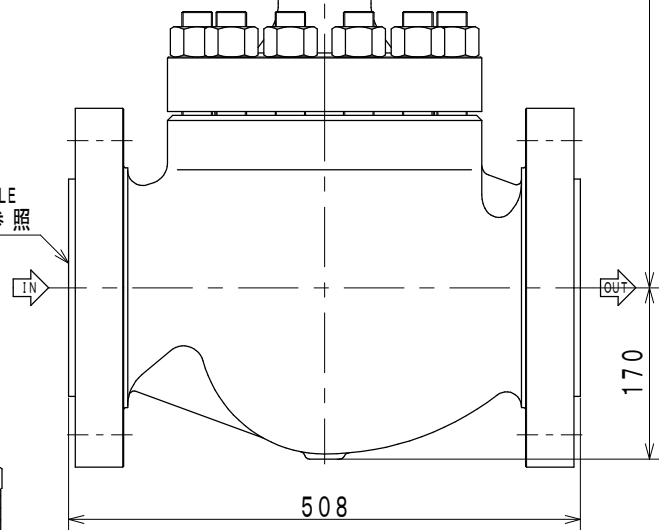
2

3

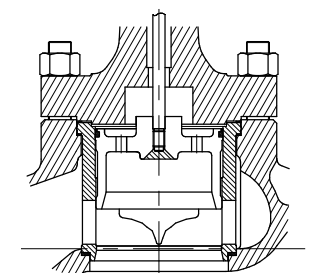


ORIENTATION  
配管取付姿勢 No. 1

SEE FLANGE TABLE  
フランジ表参照



4



TRIM STRUCTURE (EXAMPLE)  
トリム構成図 (参考)

PROD. No.  
工事番号 :

TAG No. : 207-PV-601

UNIT : mm

5

NOMINAL SIZE(INCH) 口径 (B)	RATING 圧力定格 (フランジ規格年度)	END CONNECTION 接続形式	BONNET TYPE 上蓋形式	ACTUATOR 操作器	VALVE ACTION 弁作動	TRAVEL トラベル	WEIGHT 概算質量(kg)
6	ANSI 600 (1981)	RF	HIGH/LOW TEMP. TYPE 高/低温形	HA3D	AIR TO CLOSE	50	260

Press. Balanced Cage Type Control Valve  
プレッシャバランス形ケージ調節弁

MODEL No.

H C B

**Yamatake Corporation**

DRAWING No.

HCB-GA6R2V-VFD04B0

REV.

0

A

B

C

D

E