

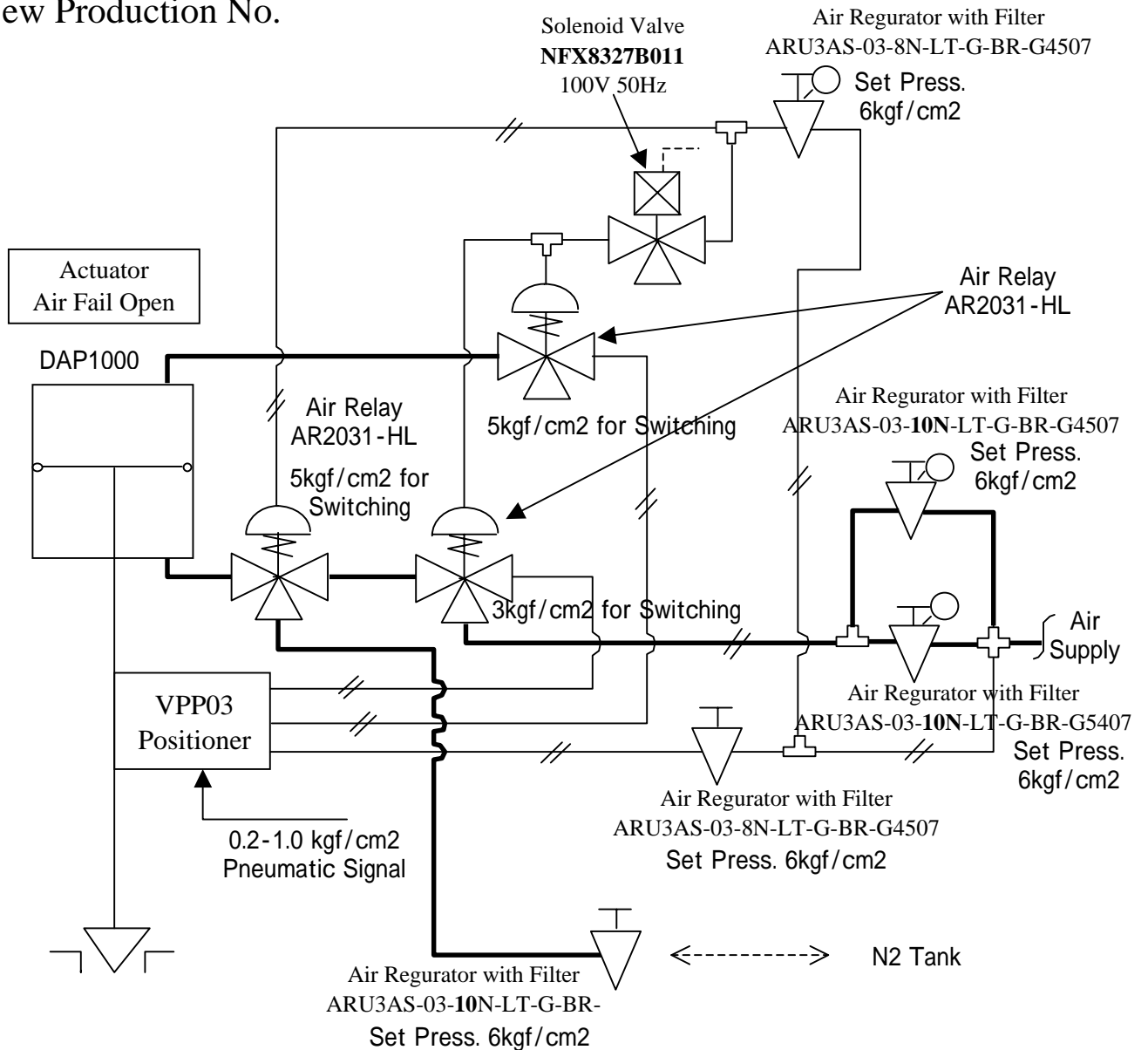
Item No. / Qty	1		1		Ref. No.	
Tag No.	FICA-4				Purchaser	
Service					End user	
<Control valve>					Project	
					<Remarks>	
Model	HTS				SV0703-105 Indicating unit : "kgf/cm2"	
Description	Top-Guided Single Seated Control Valves				SV0201-003 Seat leakage: Less than 0.01%CV (Equivalent IEC, JIS Class IV)	
Body/Port size	6 in.		5 in.		SV0601-001 Air piping Connection: 1/4 NPT	
Conn. Size. / Rated CV			275		SV0602-002 Air piping: Vinyl covered copper tube. Joint:Cr plated with vinyl cap	
Rating / Conn. Type	ANSI300		M&F(F)		SV0507 Yoke material: SCPH2	
Body material	SCPH2				SV0005-003 Copper free for fluid contacts and exposed to outside	
Trim material	SUS316 STELLITE				Cold Weather Spec	
Flow characteristic	EQ%				Min Ambient Temp - Valve Body : (-)45degC	
Bonnet	PLAIN (-17 to 230 degC)				Min Ambient Temp - Accessories : (-)40degC	
Actuator / Handle	DAP1000		HYDRAULIC		Stroke Speed : Full Close to Full Open within 10sec	
Action	AIR TO CLOSE				Air Piping Diagram	
Gland packing / Grease	P4519		---		Old Production No : 414-8005-0400 (1976)	
Gasket	V543					
Air supply / Spring range	6.0kgf/cm2		---			
Seat leakage	CLASS IV					
Color: Body/Diaph./Yoke	SILVER	SILVER	SILVER			
Paint	Standard					
<Accessories>						
Positioner	VPP03-1(SP0004)					
Structure						
Input signal	0.2-1.0 kgf/cm2					
Regulator	ARU3AS-03-8N-LT-5-G-BR-G450		2			
Regulator2	ARU3AS-03-10N-LT-5-G-BR-G45		3			
Limit switch	VCX7001		1			
Action	Full Open and Close on					
Solenoid valve	NFX8327B011		1			
Action / Power	En: Open, De: Control		AC100V 50Hz			
Booster	BR200L		1			
Air lock valve						
Air valve	AR2031-H-L		3			
<Process data>						
Fluid name/Phase	Air			GAS		
	MAX	NOR	MIN	Unit		
Flow rate	55400	50400		m3/h(N)		
Inlet pressure	34.5	34.5		kgf/cm2G		
Outlet pressure				kgf/cm2G		
Differential press.	34.5	34.5		kgf/cm2		
Shut-off press.		37		kgf/cm2		
Temperature	160	160		degC		
Density/Gravity(Liq)				kg/m3		
Density/Gravity(G,V)	29	29		MW		
Viscosity				mPa-s		
Flash				%		
Calculated CV	149.2	135.3				
Travel	82	79		%		
Outlet velocity	3.314	3.015		Mach		
Predictive SPL	129	128		dBA		
<Piping spec.>						
Strength Calc. Sheet						
Design					kgf/cm2G	
Temp.					degC	
Size		6 in.		6 in.		
Sch No.		40		40		
Thickness		7.1		7.1		
Yamatake Corporation						

Tag. No. FICA-4

User's Name _____

Old Production No. 414-8005-0400

New Production No. _____



SOV	Control Valve Action
Energized	Open
De-energized	Control

Air Signal	Control Valve Action
Increase	Open to Close
Air Fail	Open

Stroke speed: within 10 sec for valve full close to full open at energizing SOV

Approved _____

Checked _____

Drawn _____

DATE : _____

AIR PIPING DIAGRAM

Yamatake Corporation