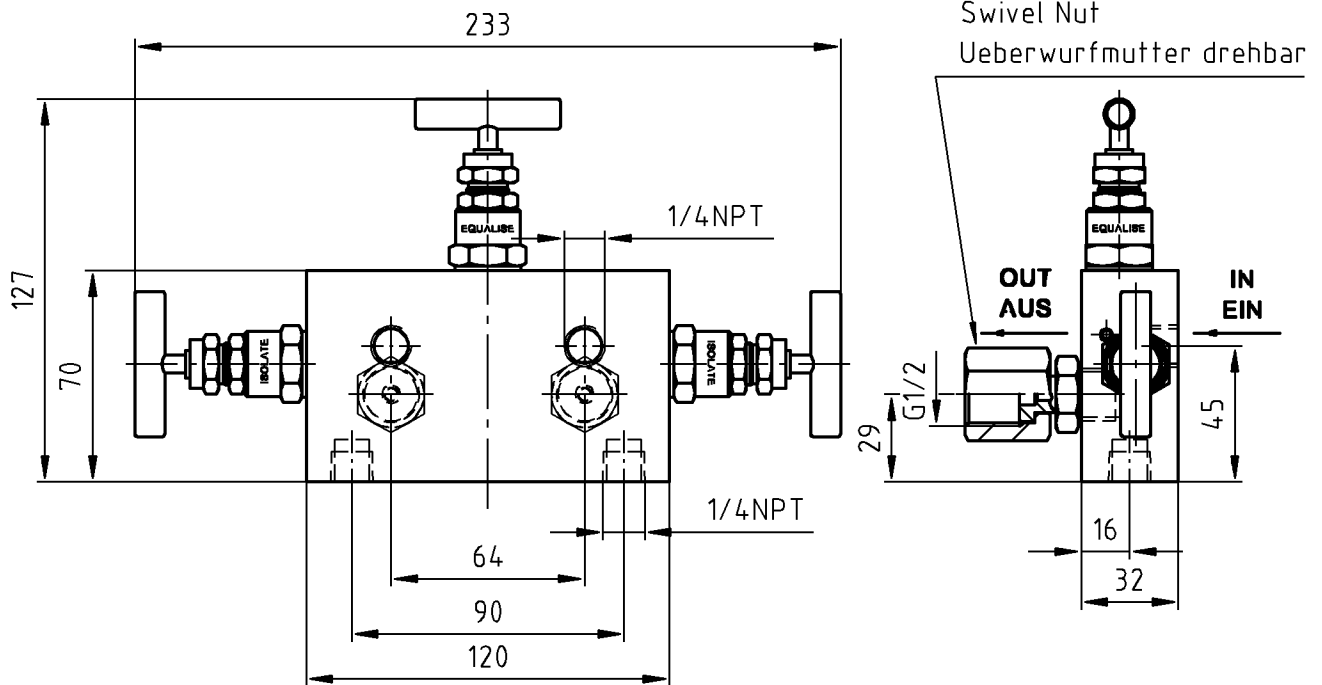
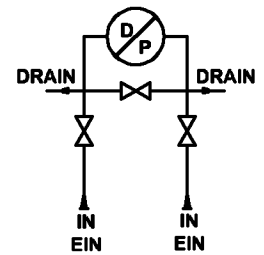


According to ISO 16016, we have all rights reserved for this document!
 Gemäss ISO 16016 behalten wir uns diese Unterlage alle Rechte vor!



11:58 - 25.06.2004
 Freigabe-22

Delivery Specification
 Lieferspezifikation S-Nr. 2020312

REVISION	
14.06.04	01
Modifizier/Aenderer	ERDTLIA

VENT-3 A64 1/4NPT I MU G1/2 316L 3.1B PN400 N. NACE STD						Drwg.-No. / S-Nr.																	
Three-way valve manifold						2130028.01 -22																	
3-FACH VENTIL						Reference																	
Material 316L ZEUGNIS 3.1B				Scale 1:2.5	drawn/gez. 14.06.04	ERDTLIA	Frame/TR 1																
Blank Rohrteil				Nom.Size NG			Sheet / Blatt 1 / 1																
Surface texture/Oberflaeche				Check dimension Pruefmaß	ISO 13715	Toler. ISO 8015	Unit Einheit [mm]																
<table border="1"> <thead> <tr> <th colspan="2">Tot. ISO 2768 - mK</th> </tr> <tr> <th>0.5</th> <th>>6</th> </tr> </thead> <tbody> <tr> <td>...6</td> <td>...30</td> </tr> <tr> <td>...120</td> <td>...400</td> </tr> </tbody> </table>				Tot. ISO 2768 - mK		0.5	>6	...6	...30	...120	...400	<table border="1"> <thead> <tr> <th>0.5</th> <th>>6</th> <th>>30</th> <th>>120</th> </tr> </thead> <tbody> <tr> <td>±0.1</td> <td>±0.2</td> <td>±0.3</td> <td>±0.5</td> </tr> </tbody> </table>	0.5	>6	>30	>120	±0.1	±0.2	±0.3	±0.5			ALEXANDER WIEGAND GmbH & Co. KG
Tot. ISO 2768 - mK																							
0.5	>6																						
...6	...30																						
...120	...400																						
0.5	>6	>30	>120																				
±0.1	±0.2	±0.3	±0.5																				
R _z in µm						D-63908 Klingenberg www.wika.com																	