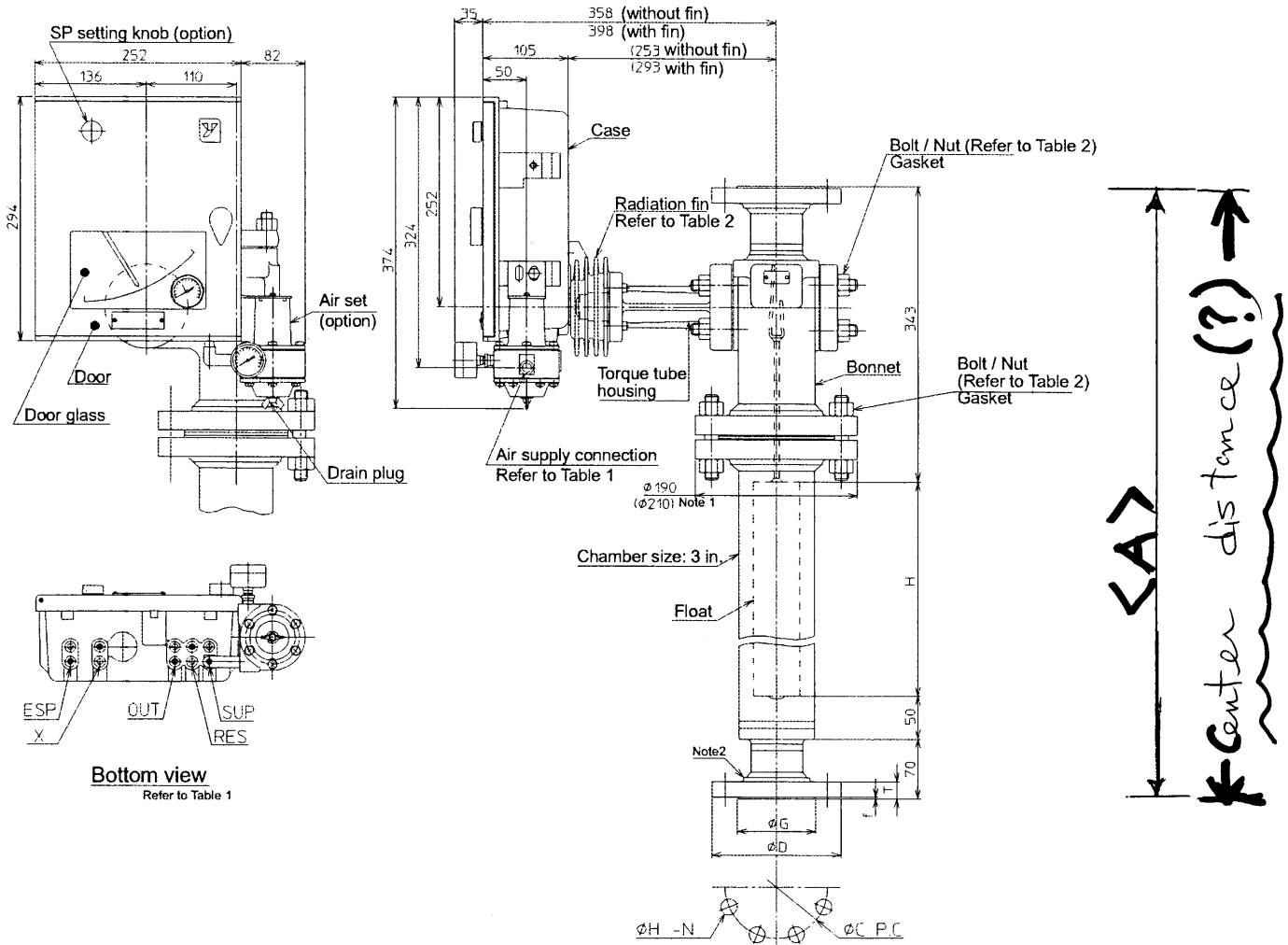


[Unit: mm]



<A>
 Center distance (?)

Table 1: Air piping connection *a

Symbol	Description
⊙	Rc1/4
⊙	1/4NPT internal thread
ESP	External SP
X	Transmitting signal
OUT	Controlled signal
RES	External reset signal
SUP	Supply air pressure

*a) In case of manual reset, the piping for "SUP" and "RES" are pre-connected.

Table 2: Bolt / Nut material

Code	Bolt / Nut material	Radiation fin
U.M	SNB7/S45C *b	With
A.E	SNB7/S45C *b	Without
D	SUS304/SUS304	Without

*b) If it is specified "Y131" marked *b is SUS304 / SUS304.

Table 4: Size H

Measuring range (mm)	H
0-300	300
0-350	350
0-400	400
0-500	500
0-600	600
0-700	700
0-800	800
0-1000	1000
0-1200	1200
0-1500	1500
0-2000	2000

Table 3: Connecting flange size

Flange	ϕD	ϕG	T	f	ϕC	$\phi H-N$
40A	JIS10K RF	140	81	16	2	105 19-4
50A	JIS10K RF	155	96	16	2	120 19-4
1 1/2 B	JPI	127	73.2	18	1.6	98.6 16-4
2B	ANSI 150 RF	152	91.9	19.5	1.6	120.6 19-4
40A	JIS20K RF	140	81	18	2	105 19-4
50A	JIS20K RF	155	96	18	2	120 19-8
40A	JIS30K RF	160	90	22	2	120 23-4
50A	JIS30K RF	165	105	22	2	130 19-8
1 1/2 B	JPI	155	73.2	21	1.6	114.3 22-4
2B	ANSI 300 RF	165	91.9	22.5	1.6	127 19-8

Note 1) () dimension and shows pressure rating JIS 20K, JIS 30K, JPI 300, ANSI 300.
 2) The flange of pressure rating JIS 10K is not provided a hub.

<Item 2>
 $H = 1220 \text{ mm (48")}$
 $A = 1220 + 70 + 50 + 343 = 1683 \text{ mm}$

<Item 3 and Item 5>
 $H = 356 \text{ mm (14")}$
 $A = 356 + 70 + 50 + 343 = 819 \text{ mm}$

<Item 4>
 $H = 1524 \text{ mm (60")}$
 $A = 1524 + 70 + 50 + 343 = 1987 \text{ mm}$

<YEU-04-5620.Pdf>