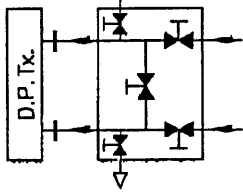
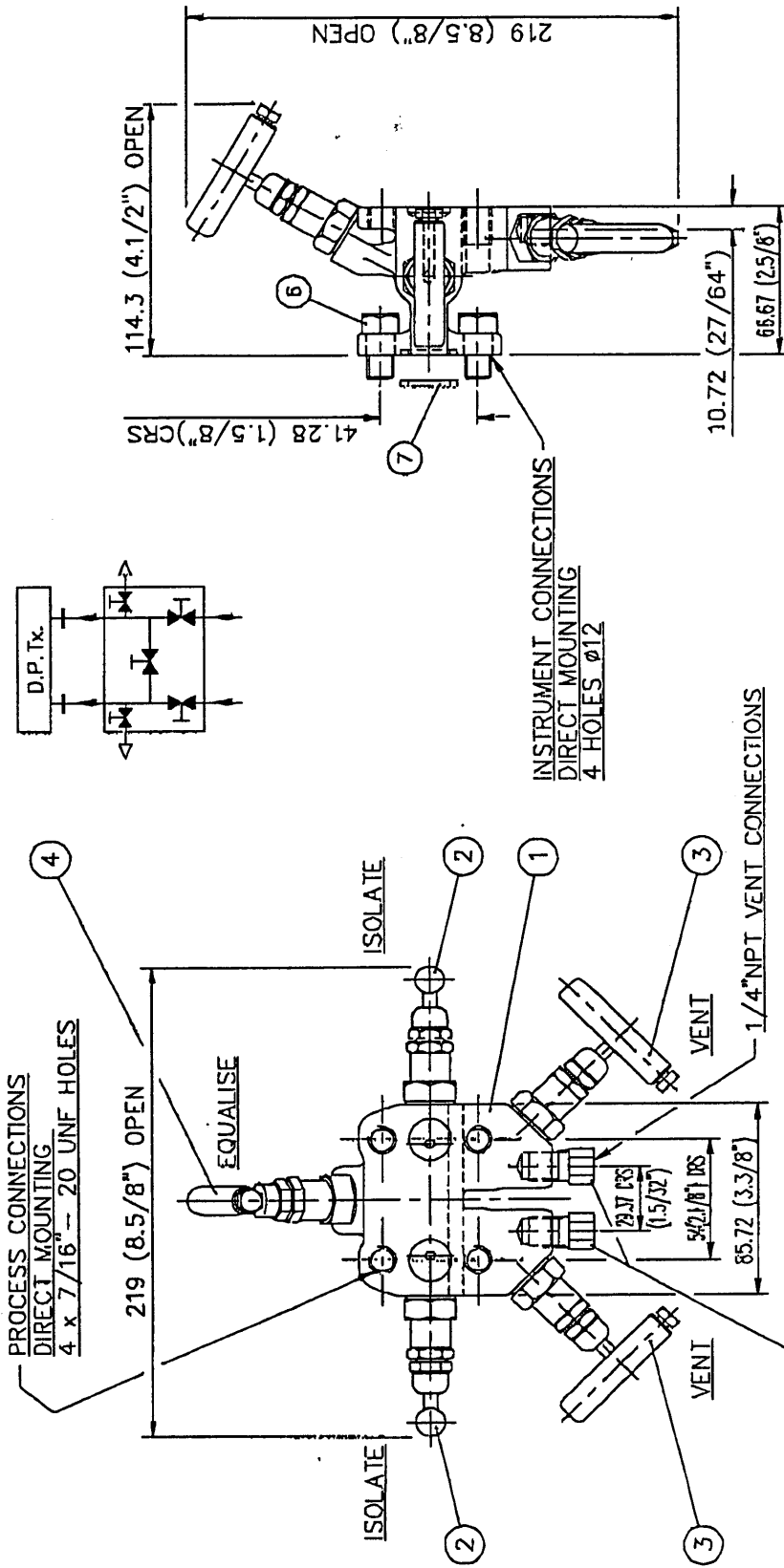


DO NOT SCALE, IF IN DOUBT ASK



INSTRUMENT CONNECTIONS  
DIRECT MOUNTING  
4 HOLES  $\phi 12$

ASSEMBLED WEIGHT = 2.4 Kg.

**COPYRIGHT/DESIGN - RIGHT WARNING!**

This drawing embodies a confidential proprietary design originated by KEYSTONE and all design, manufacturing, reproduction, use and sale rights regarding the same are reserved. It is submitted in confidence and its disclosure to any third party for any purpose, or the recipient agrees by accepting this drawing that they will not disclose it to any third party without the express written consent of KEYSTONE. All patent rights hereto are expressly reserved.

COPYRIGHT © 1992 BY  
**KEYSTONE U.K. L.T.D.**  
ANDERSON GREENWOOD & Co.  
STOCKPORT, ENGLAND

DO NOT SCALE - IF IN DOUBT ASK  
MAX. WORKING CONDITIONS  
41.3 BAR AT 93 °C  
276 BAR AT 260 °C

PROJECTION

MATL: AS LISTED  
FINISH:  
TITLE: A24-AVIS.

DRN:P. A.C. DATE:1/5/91  
CKD:B.TURNER DATE:1/5/91  
SCALE: 1 : 2  
DRG NO:20-B143-021

ITEM NO	DESCRIPTION	MATERIAL	QTY
7	FLANGE SEALING RING	P. T. F. E.	2
6	7/16" UNF x 3/4" LG SCREW	H. I. CARBON STL	4
5	BLANKING PLUG	316S11	2
4	EQUALISE HEAD UNIT	316 SS	1
3	VENT HEAD UNIT	316 SS	2
2	ISOLATE HEAD UNIT	316 SS	2
1	A24A_JS BODY	ASTM A351 CF3M	1

CUSTOMER:  
ORDER NO:

REVISION  
ISSUE 2.  
NACE SPEC  
DELETED.  
FLANGE SEAL  
RING WAS  
ERAFOL.  
P.A.C.  
9/3/92.  
C.C.D. P.N.S.  
3/3/92.  
ISSUE 3.  
WEIGHT ADDED  
SHEET ADDED  
B. TURNER.  
31/6/95.

ISSUE  
3