

Air Mass Flow Meter (Nitrogen, Compressed Air)

Type: **MCF**



High Performance at Low Cost

- Excellent Accuracy and Stability
- Distributed cost calculation and consumption control
- Leakage detection
- Alarm functions

Technical Data:

Basic technical data:						
Model-No.	MCF0080	MCF0150	MCF0151	MCF025	MCF040	MCF050
Gas type	Air or N2 (non-condensing, no mist, no dust (0,2 µm))					
Flow rate range [NI/min]	2 – 200	5 – 500	10 – 1000	30 – 3000	60 – 6000	120 – 12000
Reverse flow range [NI/min]	-60	-150	-300	-900	-1800	-3600
Extended range [NI/min]	400	1000	2000	6000	12000	24000
Accuracy	±3 % FS					
Accuracy 3%FS range [NI/min]	4 – 200	10 – 500	20 - 1000	60 – 3000	120 – 6000	240 – 12000
Display resolution [NI/min]	1	1	2	5	10	10
Process connection						
Pipe size	8A(¼B)Rc	15A(½B)Rc	15A(½B)Rc	25A(1B)Rc	40A(1½B)Rc	50A(2B)Rc
Process connection	Selectable: G (ISO 228-1) , Rc (ISO 7/1), NPT					
Process connection (Europe)	G ¼"	G 1/2"	G 1/2"	G 1"	G 1 1/2"	G 2"
Material / Weight						
Body material	Aluminum alloy, with alumite treatment on the surface					
Special treatment	Selectable: Oil-free treatment, O-Ring FKM fluororubber					
Case material	Denatured PPO					
Weight	400 g	400 g	400 g	500 g	700 g	1100 g
Operating conditions						
Operating temperature	-10 to +60 °C (without condensation)					
Storage temperature	-20 to +70 °C (without condensation)					
Humidity	0 to 90 % RH (without condensation)					
Operating pressure range	-0.07 to +1.0 MPa (-0,7 bar g to 10 bar g)					
Pressure resistance	1,5 MPa (15 bar g)					
Mounting orientation	Horizontal (flow: left → right, right → left) · Vertical (flow: up → down, down → up)					
Power supply / Output signals						
Power supply	24 VDC, 120 mA max.					
Output signal	4-20 mA (300 Ω load resistance max.)					
Event output / Pulse output	1 Open collector output (rating 30 VDC, 50 mA), selectable as Pulse output (external integration), flow rate high/low alarm, count up/down, or alarm output					
Communication	RS485 selectable (3-wire, Modbus transmission speed 19200 bps. max.)					
Electrical connection	Cable PA5 Series VA connector (4 pins)					
Display	7-segment, 5-digit display (instantaneous flow rate , cumulative flow, cost)					
Flow units	Selectable: NI/min, NI, Nm3/h, Nm3 , Nm3/min, Nm3 , kg/h, kg					
Standards						
Ingress protection	IP65. (Rating is based on JIS C 0920 and IEC529.)					
Standards compliance	CE marked: EN61326-2-3: 2006					

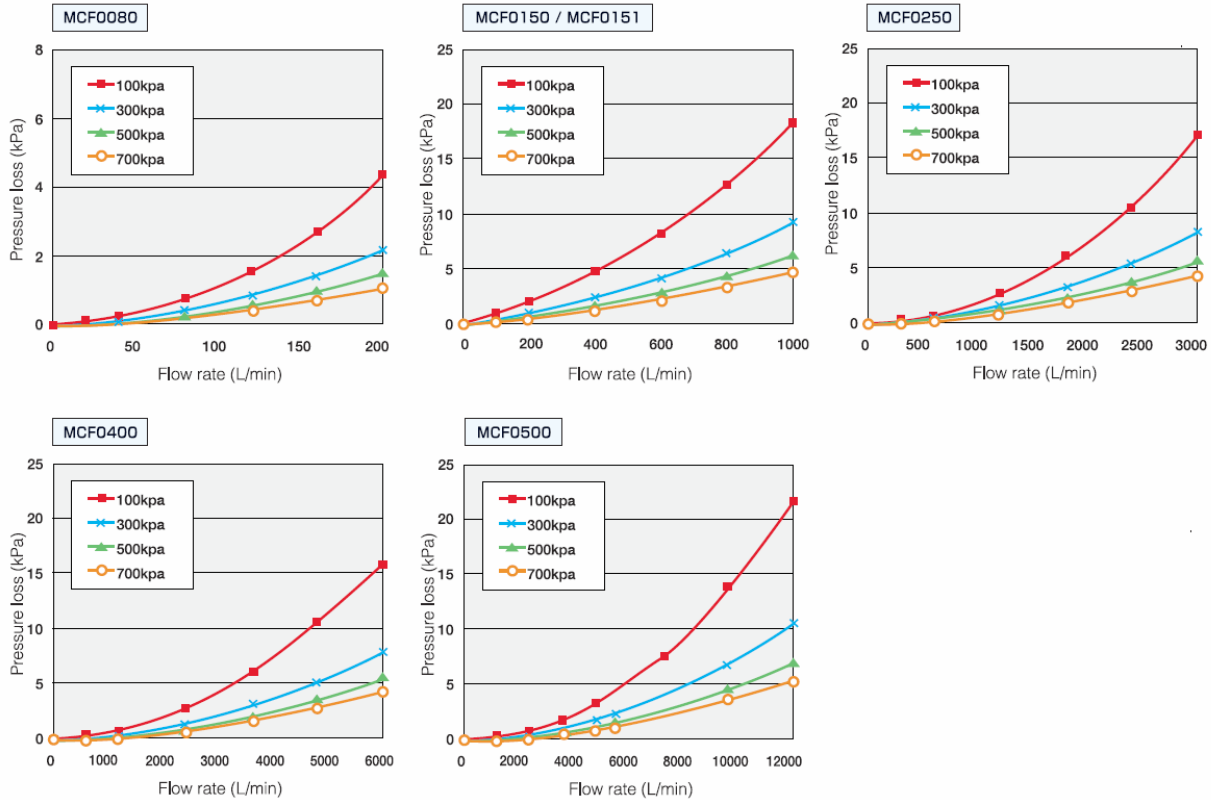
Contact general:

Azbil Europe NV
 Bosdellestraat 120/2
 B-1933 Zaventem / Belgium
 Tel: +32-(0)2-785 0710
 Fax: +32-(0)2-785 0711
<http://eu.azbil.com/>

Contact direct

Azbil Europe NV
 Martin Trojan
 Tel: +49-(0)6202-574 198
 Fax: +49-(0)6202-574 199
 Mobil: +49-(0)151-1967 4551
m.trojan.nr@eu.azbil.com

Pressure loss (at gas pressure 100 – 700 kPa)



Selection guide:

Model Number										Code
Basic Model	Pipe size Range	Material of body	Pipe connect.	Gas type	Output	Option	Option	Option	Product Version	Specification
MCF										Air/N2
	0080									200 NI/min (1/4")
	0150									500 NI/min (1/2")
	0151									1.000 NI/min (1/2")
	0250									3.000 NI/min (1")
	0400									6.000 NI/min (1 1/2")
	0500									12.000 NI/min (2")
		A								Alu-alloy NBR-seal
		F								Alu-alloy FKM-seal (oil inhibited)
			R							Rc-Thread (female taper ISO 7-1)
			N							NPT-Thread (female)
			G							G-Thread (female cyl. ISO 228-1)
				N						Gas: Air / N2
					D01					24VDC / 4-20 mA / Pulse
					D10					24 VDC / RS 485 / no output
						0				None
							0			None
								0		None
								D		Inspection Data
								Y		Traceability Certificate
									0	Style Code

Cabel for MCF		Connect- ion	Cable Length [m]
Code			
PA5-4ISX2MK-E		M12	2 m
PA5-4ISX5MK-E		M12	5 m

from 31.03.2011 please change code "M" into "S" while cable ordering (UL approved cable)